



**LORNAY**  
ENVIRONMENTAL CONSULTING

## **Photo Report**

Rusty Gate Mountain Retreat

March 2024

**Consultant:**

**Michelle Naylor** | Env. Consultant | M.Sc., Pr. Sci. Nat., EAPSA  
cell: 083 245 6556 | tel: 028 316 1769 | fax: 086 585 2461 | [michelle@lornay.co.za](mailto:michelle@lornay.co.za) | [www.lornay.co.za](http://www.lornay.co.za)  
PO Box 1990, Hermanus, 7200  
Lornay Environmental Consulting Pty Ltd | Reg 2015/445417/07



View of existing cottages and camping area

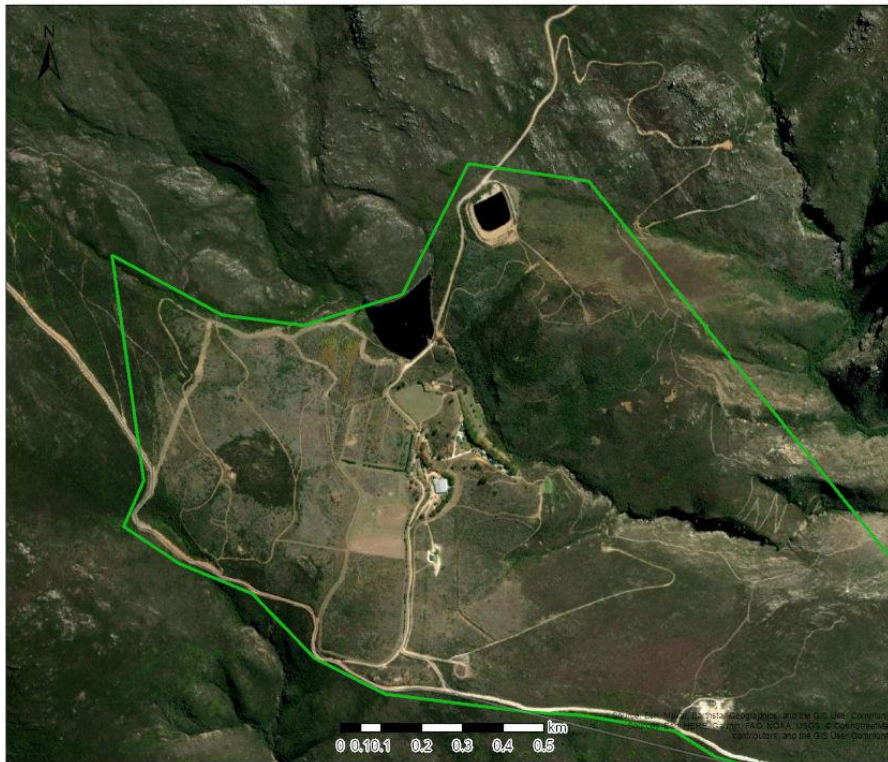


View of proposed camping area



View of farm dam with old orchards visible in the background where the eco cabins are proposed

## Aerial



## Legend

Map Center: Lon: 19°22'47.2"E  
 Lat: 34°1'57.4"S  
 Scale: 1:12,010  
 Date created: 2023/29/09



Drone pic – Site 2



Drone pic – Site 2



Drone pic – Site 3A



Drone pic – Site 3A



Drone pic – Site 3B



Drone pic – Site 3B



Drone pic – site 6



Drone pic – site 6



Drone pic – site 7



Drone pic – site 7



Drone pic – site 24





Drone pic – site 24



Drone pic – site 25



Drone pic – site 25



Drone pic – site 26



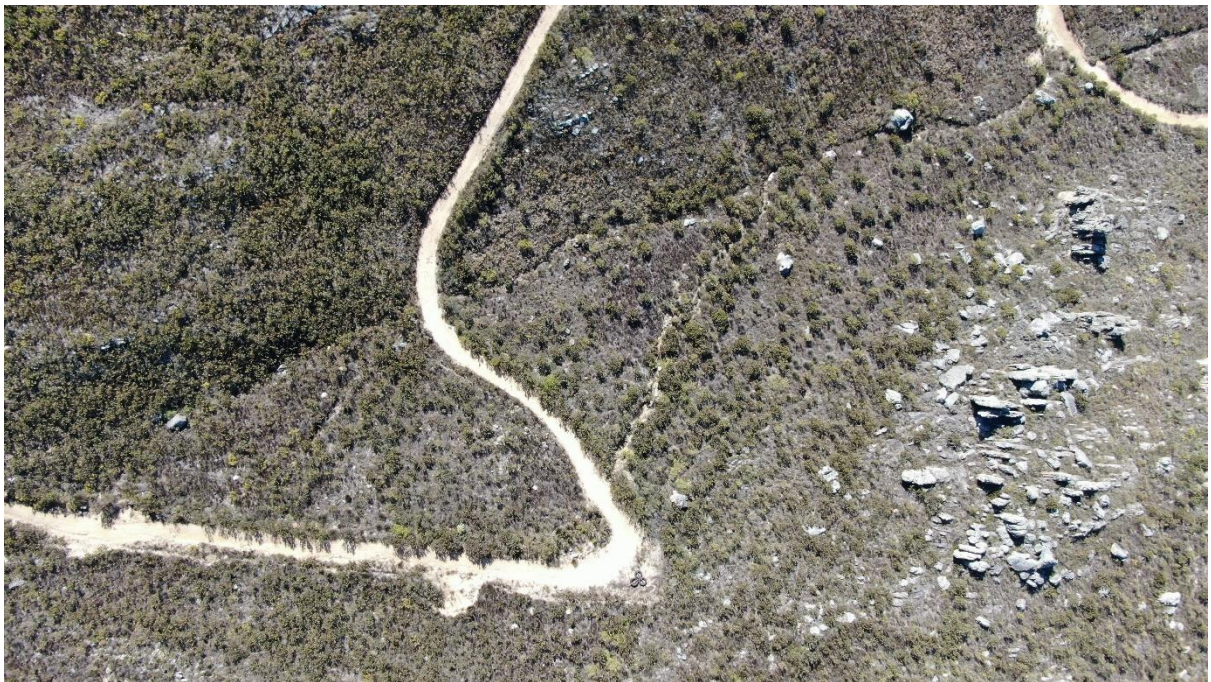
Drone pic – site 26



Drone pic – site 27



Drone pic – site 27



Drone pic – site 28



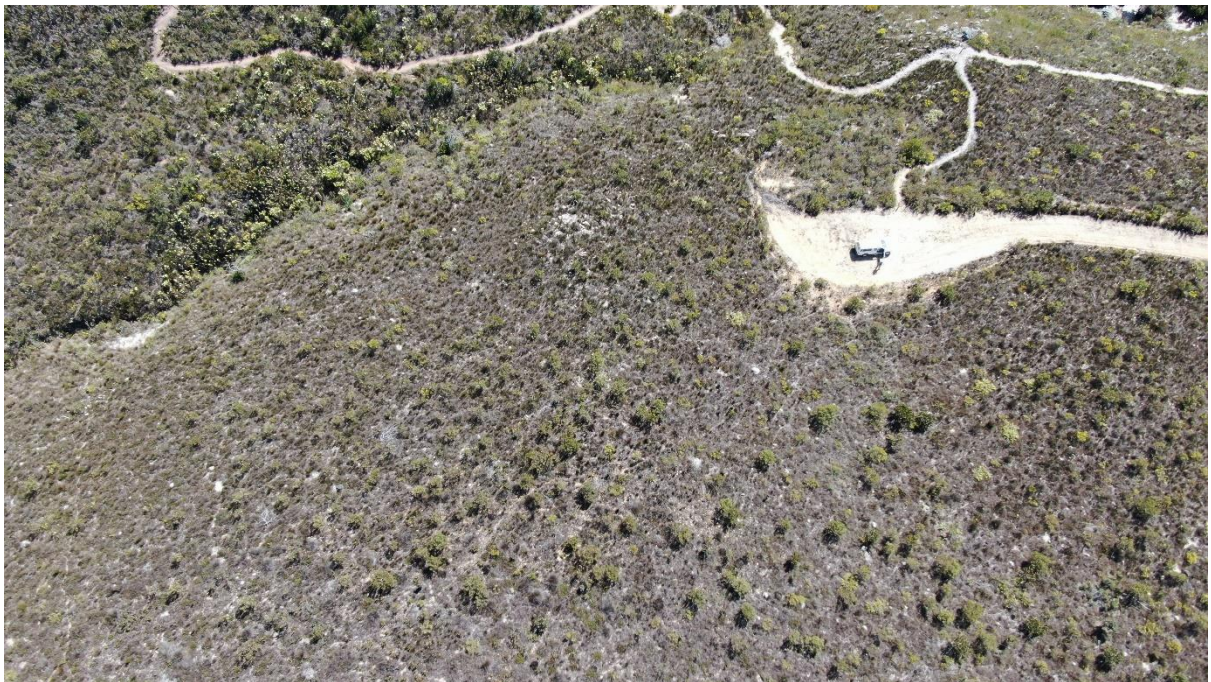
Drone pic – site 28



Drone pic – site 29



Drone pic – site 29



Drone pic – site 30



Drone pic – site 30



Drone pic – site 31



Drone pic – site 31