

**SCREENING REPORT FOR AN ENVIRONMENTAL AUTHORIZATION AS
REQUIRED BY THE 2014 EIA REGULATIONS – PROPOSED SITE
ENVIRONMENTAL SENSITIVITY**

EIA Reference number: -

Project name: PROPOSED RESIDENTIAL DEVELOPMENT

Project title: ERF 1486 VERMONT

Date screening report generated: 28/11/2022 11:12:28

Applicant: CRAIG SAUNDERS

Compiler: MICHELLE NAYLOR

Compiler signature:

.....

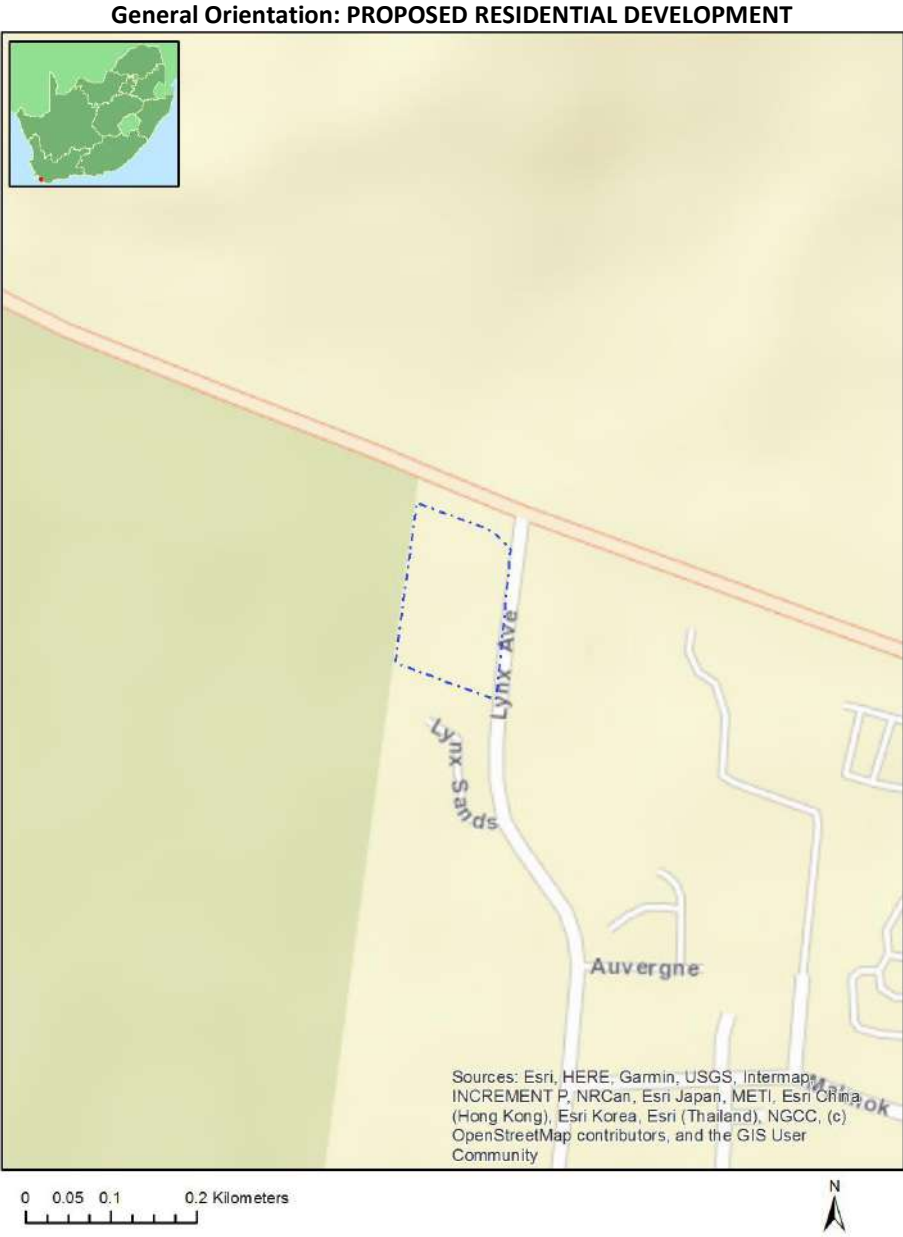
Application Category: Transformation of land | Indigenous vegetation

Table of Contents

- Proposed Project Location 3
 - Orientation map 1: General location 3
- Map of proposed site and relevant area(s) 4
 - Cadastral details of the proposed site 4
 - Wind and Solar developments with an approved Environmental Authorisation or applications under consideration within 30 km of the proposed area 4
 - Environmental Management Frameworks relevant to the application 4
- Environmental screening results and assessment outcomes 5
 - Relevant development incentives, restrictions, exclusions or prohibitions 5
- Map indicating proposed development footprint within applicable development incentive, restriction, exclusion or prohibition zones 6
 - Proposed Development Area Environmental Sensitivity 6
 - Specialist assessments identified 7
- Results of the environmental sensitivity of the proposed area 9
 - MAP OF RELATIVE AGRICULTURE THEME SENSITIVITY 9
 - MAP OF RELATIVE ANIMAL SPECIES THEME SENSITIVITY 10
 - MAP OF RELATIVE AQUATIC BIODIVERSITY THEME SENSITIVITY 11
 - MAP OF RELATIVE ARCHAEOLOGICAL AND CULTURAL HERITAGE THEME SENSITIVITY 12
 - MAP OF RELATIVE CIVIL AVIATION THEME SENSITIVITY 13
 - MAP OF RELATIVE DEFENCE THEME SENSITIVITY 14
 - MAP OF RELATIVE PALEONTOLOGY THEME SENSITIVITY 15
 - MAP OF RELATIVE PLANT SPECIES THEME SENSITIVITY 16
 - MAP OF RELATIVE TERRESTRIAL BIODIVERSITY THEME SENSITIVITY 18

Proposed Project Location

Orientation map 1: General location



Map of proposed site and relevant area(s)



Cadastral details of the proposed site

Property details:

No	Farm Name	Farm/ Erf No	Portion	Latitude	Longitude	Property Type
1	VERMONT	1486	0	34°24'24.08S	19°8'52.47E	Erven

Development footprint¹ vertices:
No development footprint(s) specified.

Wind and Solar developments with an approved Environmental Authorisation or applications under consideration within 30 km of the proposed area

No nearby wind or solar developments found.

Environmental Management Frameworks relevant to the application

No intersections with EMF areas found.

¹ “development footprint”, means the area within the site on which the development will take place and includes all ancillary developments for example roads, power lines, boundary walls, paving etc. which require vegetation clearance or which will be disturbed and for which the application has been submitted.

Environmental screening results and assessment outcomes

The following sections contain a summary of any development incentives, restrictions, exclusions or prohibitions that apply to the proposed development site as well as the most environmental sensitive features on the site based on the site sensitivity screening results for the application classification that was selected. The application classification selected for this report is:

Transformation of land | Indigenous vegetation.

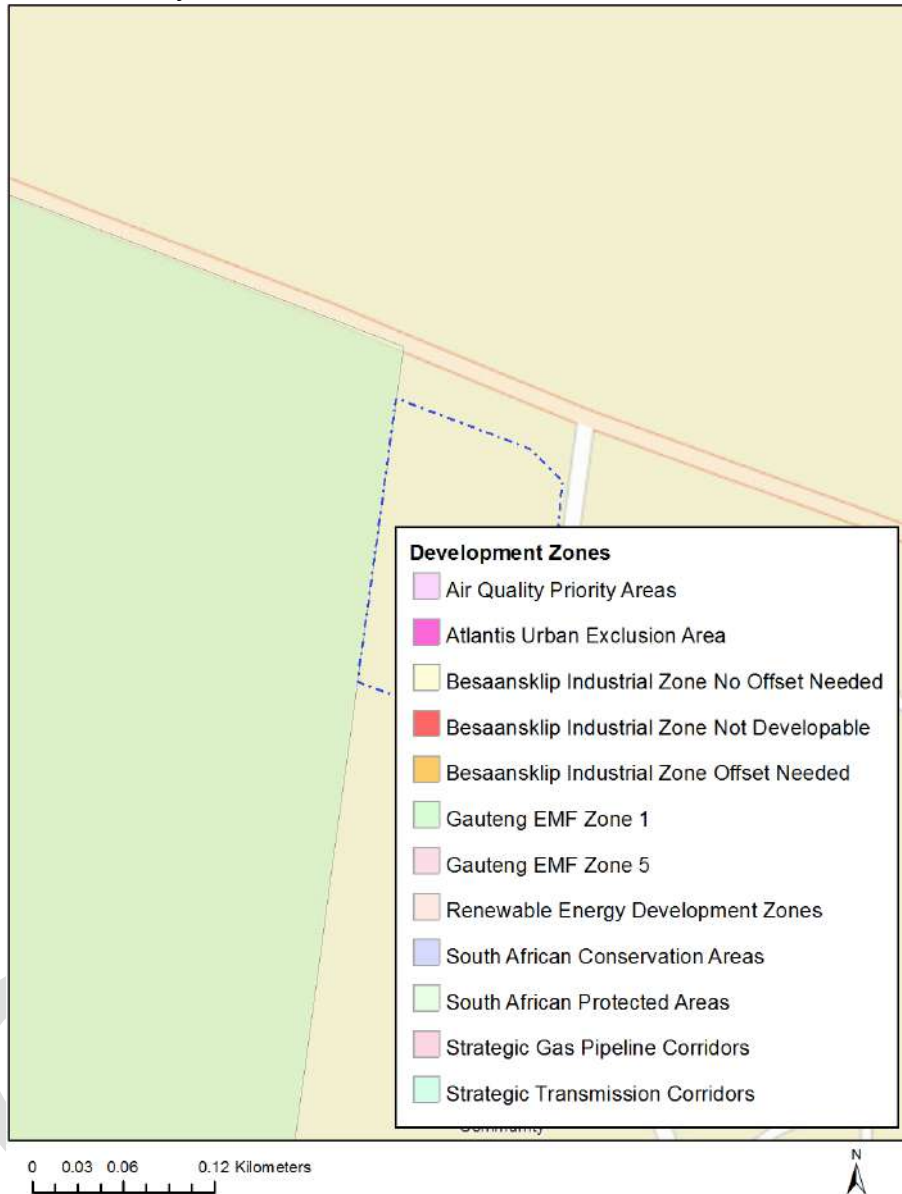
Relevant development incentives, restrictions, exclusions or prohibitions

The following development incentives, restrictions, exclusions or prohibitions and their implications that apply to this site are indicated below.

Incentive, restriction or prohibition	Implication
South African Protected Areas	https://screening.environment.gov.za/ScreeningDownloads/DevelopmentZones/SAPAD_OR_2022_Q2_Metadata.pdf

Map indicating proposed development footprint within applicable development incentive, restriction, exclusion or prohibition zones

Project Location: PROPOSED RESIDENTIAL DEVELOPMENT



Proposed Development Area Environmental Sensitivity

The following summary of the development site environmental sensitivities is identified. Only the highest environmental sensitivity is indicated. The footprint environmental sensitivities for the proposed development footprint as identified, are indicative only and must be verified on site by a suitably qualified person before the specialist assessments identified below can be confirmed.

Theme	Very High sensitivity	High sensitivity	Medium sensitivity	Low sensitivity
Agriculture Theme			X	
Animal Species Theme		X		

Aquatic Biodiversity Theme	X			
Archaeological and Cultural Heritage Theme				X
Civil Aviation Theme		X		
Defence Theme				X
Paleontology Theme				X
Plant Species Theme		X		
Terrestrial Biodiversity Theme	X			

Specialist assessments identified

Based on the selected classification, and the environmental sensitivities of the proposed development footprint, the following list of specialist assessments have been identified for inclusion in the assessment report. It is the responsibility of the EAP to confirm this list and to motivate in the assessment report, the reason for not including any of the identified specialist study including the provision of photographic evidence of the site situation.

N o	Specialist assessment	Assessment Protocol
1	Landscape/Visual Impact Assessment	https://screening.environment.gov.za/ScreeningDownloads/AssessmentProtocols/Gazetted_General_Requirement_Assessment_Protocols.pdf
2	Archaeological and Cultural Heritage Impact Assessment	https://screening.environment.gov.za/ScreeningDownloads/AssessmentProtocols/Gazetted_General_Requirement_Assessment_Protocols.pdf
3	Palaeontology Impact Assessment	https://screening.environment.gov.za/ScreeningDownloads/AssessmentProtocols/Gazetted_General_Requirement_Assessment_Protocols.pdf
4	Terrestrial Biodiversity Impact Assessment	https://screening.environment.gov.za/ScreeningDownloads/AssessmentProtocols/Gazetted_Terrestrial_Biodiversity_Assessment_Protocols.pdf
5	Aquatic Biodiversity Impact Assessment	https://screening.environment.gov.za/ScreeningDownloads/AssessmentProtocols/Gazetted_Aquatic_Biodiversity_Assessment_Protocols.pdf
6	Socio-Economic Assessment	https://screening.environment.gov.za/ScreeningDownloads/AssessmentProtocols/Gazetted_General_Requirement_Assessment_Protocols.pdf
7	Plant Species	https://screening.environment.gov.za/ScreeningDownloads/AssessmentProtocols/Gazetted_General_Requirement_Assessment_Protocols.pdf

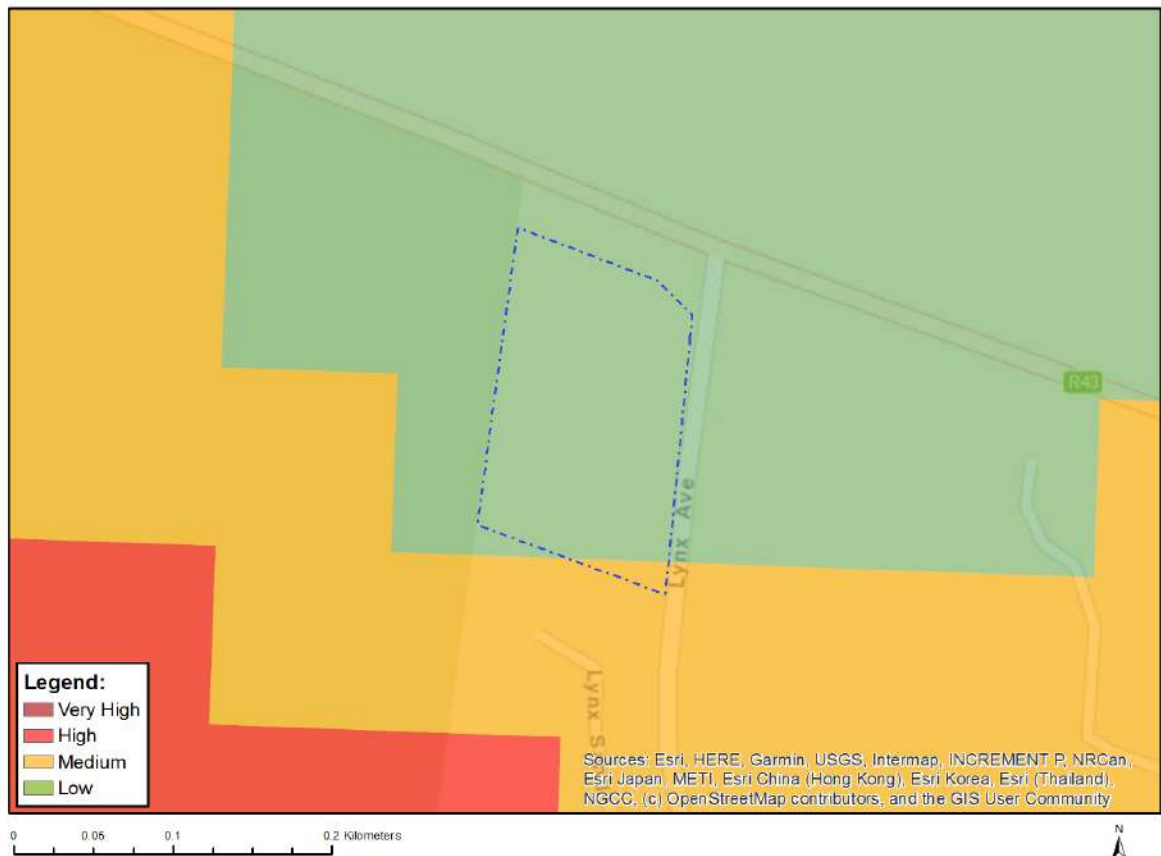
	Assessment	/Gazetted Plant Species Assessment Protocols.pdf
8	Animal Species Assessment	https://screening.environment.gov.za/ScreeningDownloads/AssessmentProtocols/Gazetted Animal Species Assessment Protocols.pdf

OFFICIAL

Results of the environmental sensitivity of the proposed area.

The following section represents the results of the screening for environmental sensitivity of the proposed site for relevant environmental themes associated with the project classification. It is the duty of the EAP to ensure that the environmental themes provided by the screening tool are comprehensive and complete for the project. Refer to the disclaimer.

MAP OF RELATIVE AGRICULTURE THEME SENSITIVITY



Very High sensitivity	High sensitivity	Medium sensitivity	Low sensitivity
		X	

Sensitivity Features:

Sensitivity	Feature(s)
Low	Land capability;01. Very low/02. Very low/03. Low-Very low/04. Low-Very low/05. Low
Medium	Land capability;06. Low-Moderate/07. Low-Moderate/08. Moderate

MAP OF RELATIVE ANIMAL SPECIES THEME SENSITIVITY



Where only a sensitive plant unique number or sensitive animal unique number is provided in the screening report and an assessment is required, the environmental assessment practitioner (EAP) or specialist is required to email SANBI at eiadatarequests@sanbi.org.za listing all sensitive species with their unique identifiers for which information is required. The name has been withheld as the species may be prone to illegal harvesting and must be protected. SANBI will release the actual species name after the details of the EAP or specialist have been documented.

Very High sensitivity	High sensitivity	Medium sensitivity	Low sensitivity
	X		

Sensitivity Features:

Sensitivity	Feature(s)
High	Aves-Circus maurus
High	Aves-Turnix hottentottus
High	Aves-Circus ranivorus
High	Aves-Neotis denhami
High	Aves-Polemaetus bellicosus
Medium	Aves-Sarothrura affinis
Medium	Reptilia-Bitis armata
Medium	Invertebrate-Aneuryphymus montanus

MAP OF RELATIVE AQUATIC BIODIVERSITY THEME SENSITIVITY

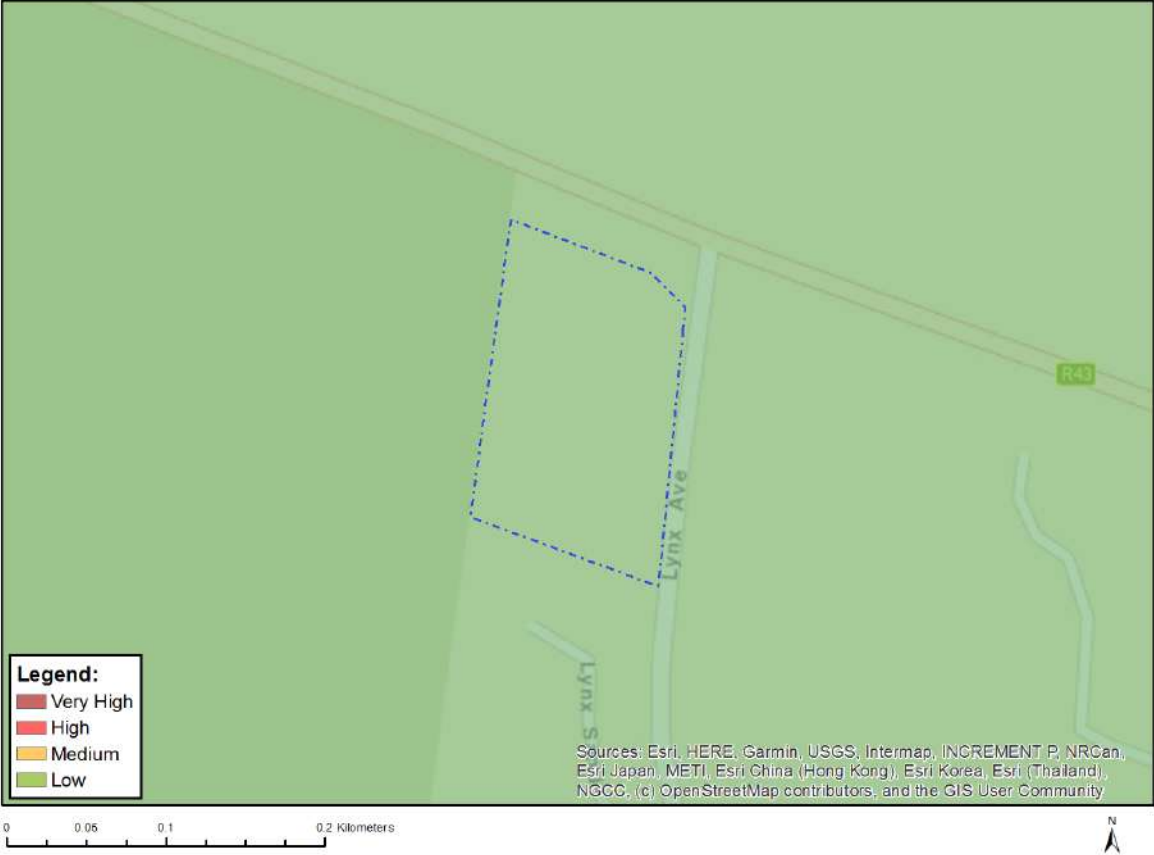


Very High sensitivity	High sensitivity	Medium sensitivity	Low sensitivity
X			

Sensitivity Features:

Sensitivity	Feature(s)
Low	Low sensitivity
Very High	Strategic water source area

MAP OF RELATIVE ARCHAEOLOGICAL AND CULTURAL HERITAGE THEME SENSITIVITY



Very High sensitivity	High sensitivity	Medium sensitivity	Low sensitivity
			X

Sensitivity Features:

Sensitivity	Feature(s)
Low	Low sensitivity

MAP OF RELATIVE CIVIL AVIATION THEME SENSITIVITY

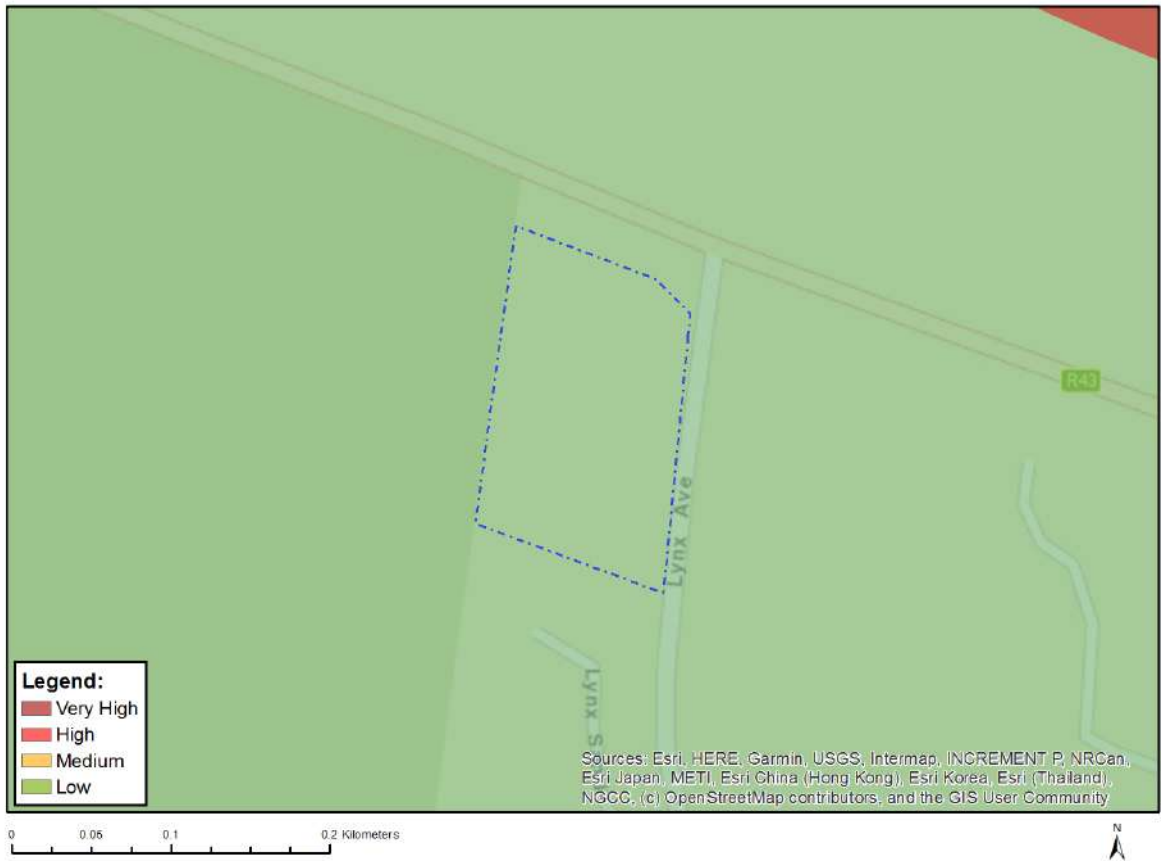


Very High sensitivity	High sensitivity	Medium sensitivity	Low sensitivity
	X		

Sensitivity Features:

Sensitivity	Feature(s)
High	Within 8 km of other civil aviation aerodrome

MAP OF RELATIVE DEFENCE THEME SENSITIVITY

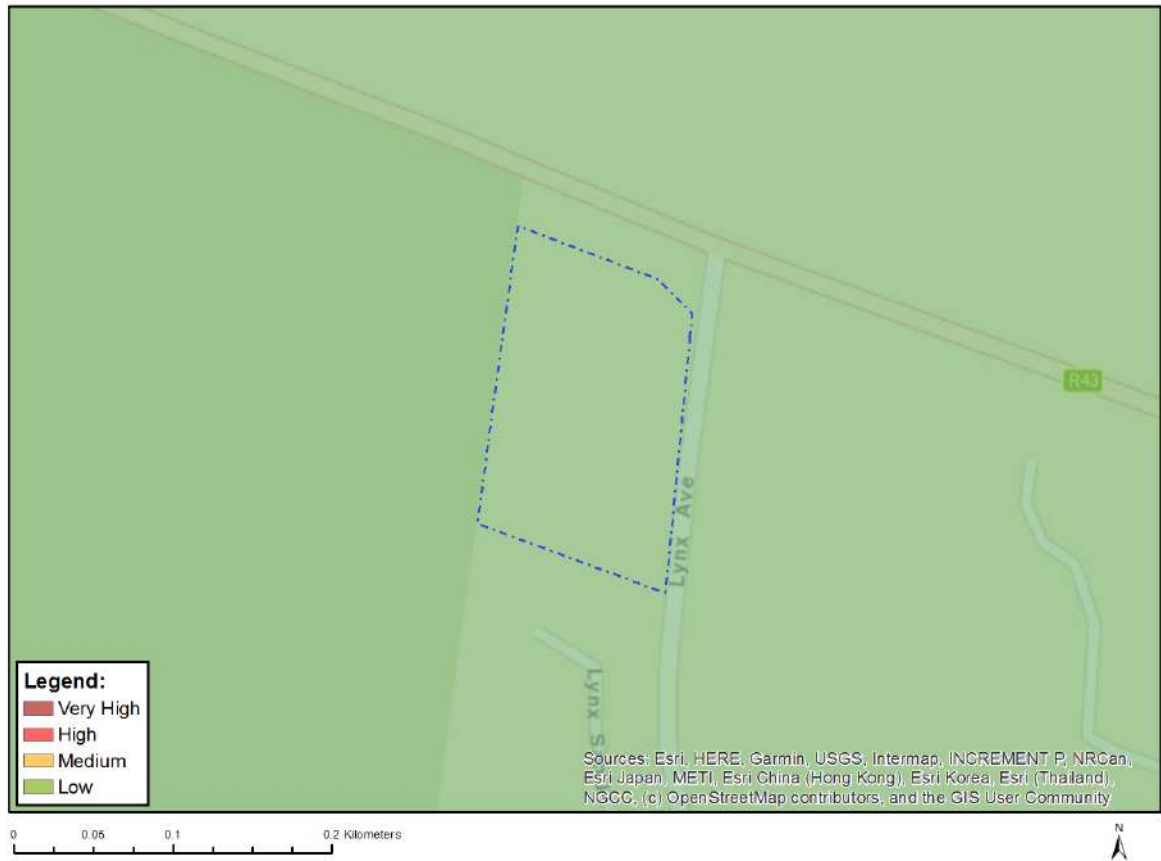


Very High sensitivity	High sensitivity	Medium sensitivity	Low sensitivity
			X

Sensitivity Features:

Sensitivity	Feature(s)
Low	Low Sensitivity

MAP OF RELATIVE PALEONTOLOGY THEME SENSITIVITY

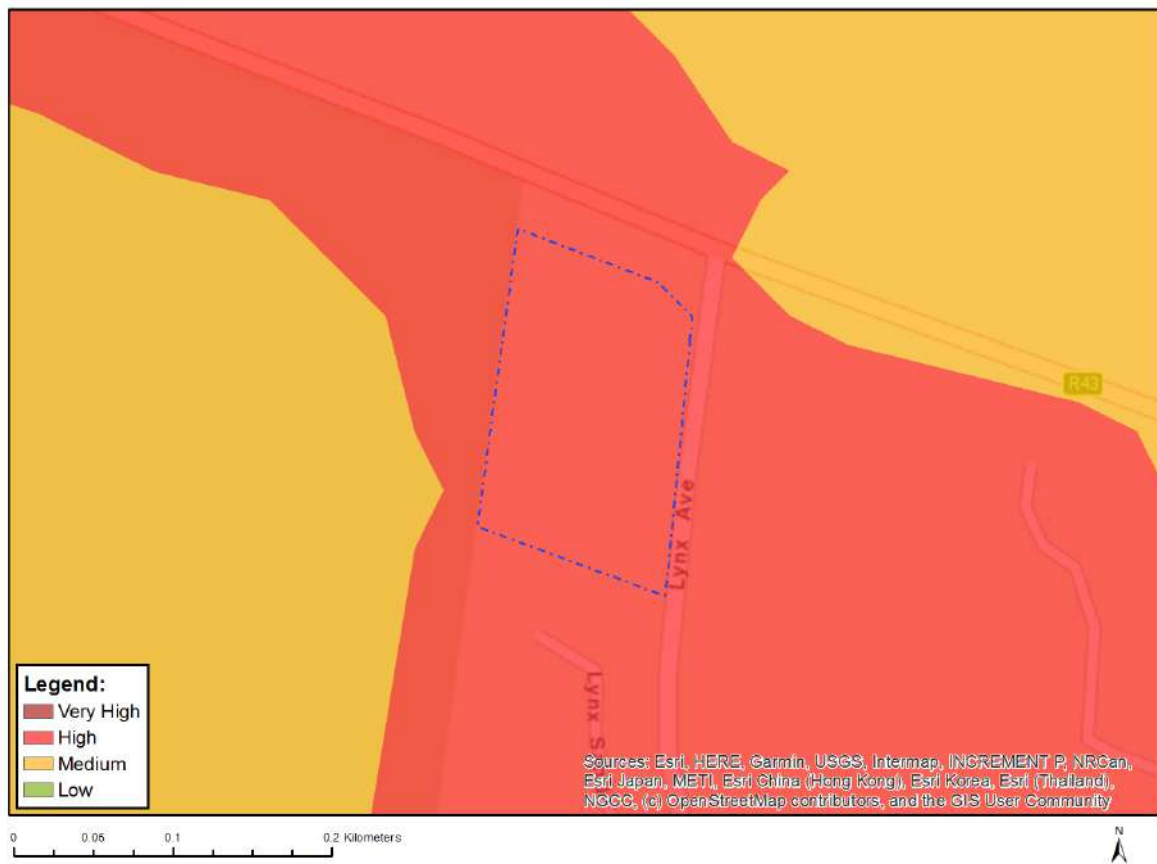


Very High sensitivity	High sensitivity	Medium sensitivity	Low sensitivity
			X

Sensitivity Features:

Sensitivity	Feature(s)
Low	Features with a Low paleontological sensitivity

MAP OF RELATIVE PLANT SPECIES THEME SENSITIVITY



Where only a sensitive plant unique number or sensitive animal unique number is provided in the screening report and an assessment is required, the environmental assessment practitioner (EAP) or specialist is required to email SANBI at eiadatarequests@sanbi.org.za listing all sensitive species with their unique identifiers for which information is required. The name has been withheld as the species may be prone to illegal harvesting and must be protected. SANBI will release the actual species name after the details of the EAP or specialist have been documented.

Very High sensitivity	High sensitivity	Medium sensitivity	Low sensitivity
	X		

Sensitivity Features:

Sensitivity	Feature(s)
High	Sensitive species 500
Medium	Lampranthus leptaleon
Medium	Lampranthus spiniformis
Medium	Lampranthus stenus
Medium	Lampranthus tenuifolius
Medium	Delosperma guthriei
Medium	Erepsia promontorii
Medium	Erepsia dunensis
Medium	Jordaniella anemoniflora
Medium	Liparia angustifolia
Medium	Aspalathus excelsa
Medium	Aspalathus globulosa
Medium	Aspalathus oblongifolia

Medium	<i>Colpoon speciosum</i>
Medium	<i>Leucadendron coniferum</i>
Medium	<i>Leucadendron linifolium</i>
Medium	<i>Leucadendron modestum</i>
Medium	<i>Leucospermum hypophyllocarpodendron</i> subsp. <i>hypophyllocarpodendron</i>
Medium	<i>Leucospermum prostratum</i>
Medium	<i>Protea angustata</i>
Medium	<i>Mimetes hirtus</i>
Medium	<i>Wahlenbergia polyantha</i>
Medium	<i>Manulea exigua</i>
Medium	<i>Pentameris pholiuroides</i>
Medium	<i>Ehrharta setacea</i> subsp. <i>uniflora</i>
Medium	<i>Geissorhiza brehmii</i>
Medium	<i>Tritonia flabellifolia</i> var. <i>thomasiae</i>
Medium	<i>Ixia sarmentosa</i>
Medium	Sensitive species 232
Medium	Sensitive species 137
Medium	Sensitive species 1140
Medium	Sensitive species 1104
Medium	<i>Nivenia stokoei</i>
Medium	<i>Pauridia alba</i>
Medium	<i>Erica capillaris</i> var. <i>capillaris</i>
Medium	<i>Erica patersonii</i>
Medium	<i>Erica propendens</i>
Medium	<i>Erica riparia</i>
Medium	<i>Tetragonia caesia</i>
Medium	Sensitive species 8
Medium	Sensitive species 1250
Medium	Sensitive species 714
Medium	<i>Isolepis venustula</i>
Medium	<i>Ficinia elatior</i>
Medium	<i>Ficinia pinguior</i>
Medium	<i>Thamnochortus pellucidus</i>
Medium	<i>Elegia fenestrata</i>
Medium	<i>Elegia prominens</i>
Medium	<i>Restio sabulosus</i>
Medium	<i>Restio papillosus</i>
Medium	Sensitive species 1139
Medium	<i>Acrolophia bolusii</i>
Medium	Sensitive species 1192
Medium	<i>Pterygodium cruciferum</i>
Medium	<i>Heliophila linearis</i> var. <i>reticulata</i>
Medium	<i>Gnidia humilis</i>
Medium	<i>Gnidia spicata</i>
Medium	<i>Gnidia ornata</i>
Medium	<i>Passerina paludosa</i>
Medium	<i>Poecilolepis maritima</i>
Medium	<i>Cotula eckloniana</i>
Medium	<i>Arctotis angustifolia</i>
Medium	<i>Amellus asteroides</i> subsp. <i>mollis</i>
Medium	<i>Amellus capensis</i>
Medium	<i>Pteronia tenuifolia</i>
Medium	<i>Cullumia squarrosa</i>
Medium	<i>Diosma demissa</i>
Medium	<i>Diosma subulata</i>
Medium	<i>Agathosma hookeri</i>
Medium	<i>Zygophyllum fuscatum</i>
Medium	<i>Cliffortia ericifolia</i>
Medium	<i>Cliffortia longifolia</i>
Medium	<i>Cliffortia ferricola</i>

Medium	Muraltia bolusii
Medium	Muraltia mitior
Medium	Sensitive species 719
Medium	Sensitive species 1151
Medium	Sensitive species 547
Medium	Sensitive species 1030
Medium	Phylica plumosa var. squarrosa
Medium	Orthochilus litoralis
Medium	Skiatophytum skiatophytoides
Medium	Lampranthus debilis
Medium	Xiphotheca reflexa
Medium	Aspalathus tylodes
Medium	Protea scolymocephala
Medium	Sensitive species 593
Medium	Sensitive species 800
Medium	Sensitive species 335
Medium	Sensitive species 599
Medium	Elegia verreauxii
Medium	Restio paludosus
Medium	Sensitive species 53
Medium	Lachnaea grandiflora

MAP OF RELATIVE TERRESTRIAL BIODIVERSITY THEME SENSITIVITY



Very High sensitivity	High sensitivity	Medium sensitivity	Low sensitivity
X			

Sensitivity Features:

Sensitivity	Feature(s)
Very High	Ecological support area 2
Very High	Strategic Water Source Areas
Very High	Vulnerable ecosystem
Very High	Hoek van de Berg Private Nature Reserve

OFFICIAL