

**SCREENING REPORT FOR AN ENVIRONMENTAL AUTHORIZATION AS  
REQUIRED BY THE 2014 EIA REGULATIONS – PROPOSED SITE  
ENVIRONMENTAL SENSITIVITY**

**EIA Reference number:** pending

**Project name:** Residential development

**Project title:** Residential development

**Date screening report generated:** 30/11/2023 17:10:24

**Applicant:** Omni King Investments

**Compiler:** Lornay

**Compiler signature:**  
.....

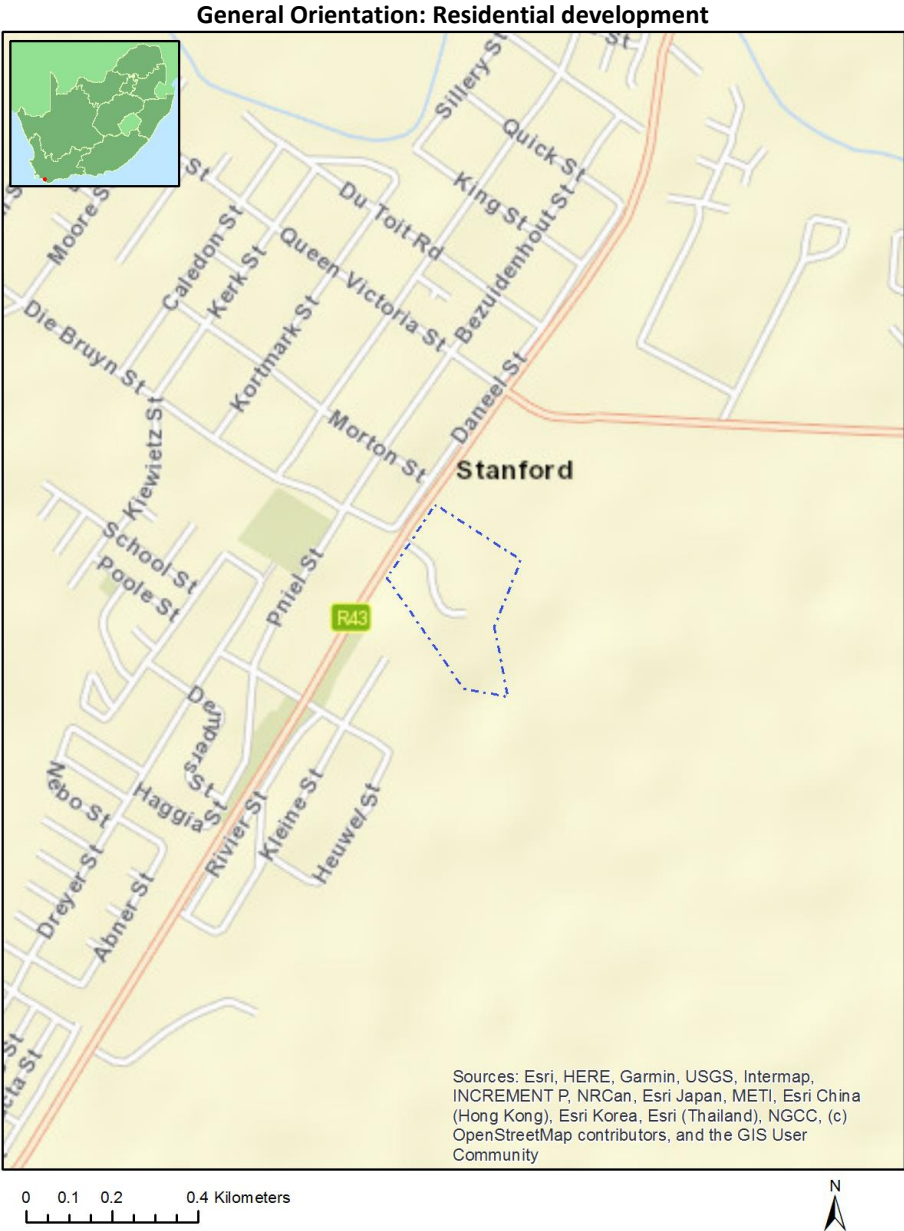
**Application Category:** Transformation of land | Indigenous vegetation

## Table of Contents

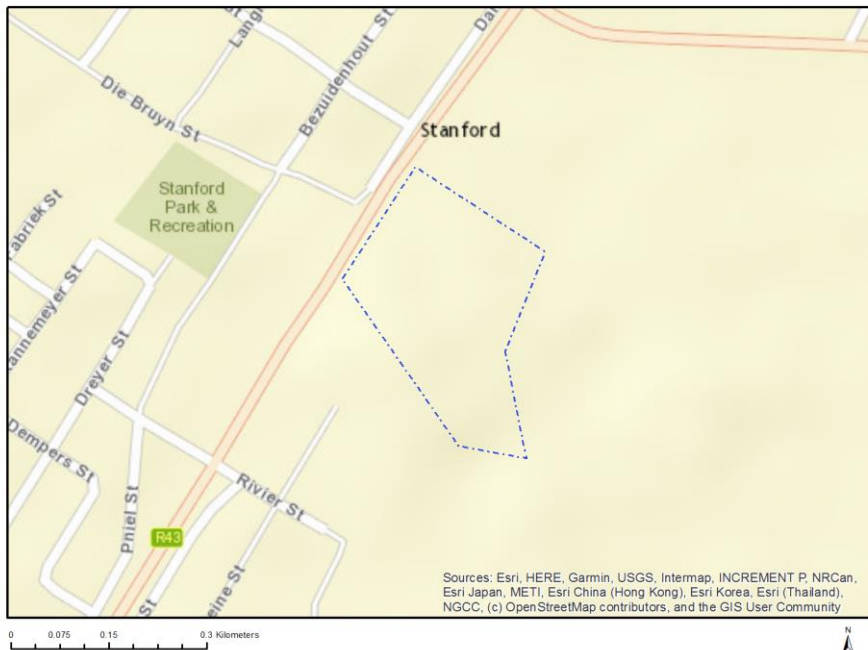
Proposed Project Location .....	3
Orientation map 1: General location .....	3
Map of proposed site and relevant area(s) .....	4
Cadastral details of the proposed site .....	4
Wind and Solar developments with an approved Environmental Authorisation or applications under consideration within 30 km of the proposed area .....	4
Environmental Management Frameworks relevant to the application .....	5
Environmental screening results and assessment outcomes .....	5
Relevant development incentives, restrictions, exclusions or prohibitions .....	5
Proposed Development Area Environmental Sensitivity .....	5
Specialist assessments identified .....	5
Results of the environmental sensitivity of the proposed area .....	7
MAP OF RELATIVE AGRICULTURE THEME SENSITIVITY .....	7
MAP OF RELATIVE ANIMAL SPECIES THEME SENSITIVITY .....	8
MAP OF RELATIVE AQUATIC BIODIVERSITY THEME SENSITIVITY .....	9
MAP OF RELATIVE ARCHAEOLOGICAL AND CULTURAL HERITAGE THEME SENSITIVITY .....	10
MAP OF RELATIVE CIVIL AVIATION THEME SENSITIVITY .....	11
MAP OF RELATIVE DEFENCE THEME SENSITIVITY .....	12
MAP OF RELATIVE PALEONTOLOGY THEME SENSITIVITY .....	13
MAP OF RELATIVE PLANT SPECIES THEME SENSITIVITY .....	14
MAP OF RELATIVE TERRESTRIAL BIODIVERSITY THEME SENSITIVITY .....	16

# Proposed Project Location

## Orientation map 1: General location



## Map of proposed site and relevant area(s)



## Cadastral details of the proposed site

Property details:

No	Farm Name	Farm/ Erf No	Portion	Latitude	Longitude	Property Type
1	STANFORD	438	0	34°26'41.34S	19°27'28.19E	Erven
2	DE KLEINE RIVIERS VALEY	645	0	34°26'31.08S	19°26'56.04E	Farm
3	DE KLEINE RIVIERS VALEY	645	0	34°26'29.05S	19°27'0.34E	Farm Portion

Development footprint<sup>1</sup> vertices:

No development footprint(s) specified.

## Wind and Solar developments with an approved Environmental Authorisation or applications under consideration within 30 km of the proposed area

No	EIA Reference No	Classification	Status of application	Distance from proposed area (km)
1	12/12/20/1746/1	Wind	Approved	25.8
2	12/12/20/1746/AM3	Wind	Approved	25.8

<sup>1</sup> "development footprint", means the area within the site on which the development will take place and includes all ancillary developments for example roads, power lines, boundary walls, paving etc. which require vegetation clearance or which will be disturbed and for which the application has been submitted.

3	12/12/20/1746	Wind	Approved	25.8
---	---------------	------	----------	------

## Environmental Management Frameworks relevant to the application

No intersections with EMF areas found.

## Environmental screening results and assessment outcomes

The following sections contain a summary of any development incentives, restrictions, exclusions or prohibitions that apply to the proposed development site as well as the most environmental sensitive features on the site based on the site sensitivity screening results for the application classification that was selected. The application classification selected for this report is: **Transformation of land | Indigenous vegetation.**

### Relevant development incentives, restrictions, exclusions or prohibitions

The following development incentives, restrictions, exclusions or prohibitions and their implications that apply to this site are indicated below.

No intersection with any development zones found.

### Proposed Development Area Environmental Sensitivity

The following summary of the development site environmental sensitivities is identified. Only the highest environmental sensitivity is indicated. The footprint environmental sensitivities for the proposed development footprint as identified, are indicative only and must be verified on site by a suitably qualified person before the specialist assessments identified below can be confirmed.

Theme	Very High sensitivity	High sensitivity	Medium sensitivity	Low sensitivity
Agriculture Theme	X			
Animal Species Theme		X		
Aquatic Biodiversity Theme	X			
Archaeological and Cultural Heritage Theme	X			
Civil Aviation Theme		X		
Defence Theme				X
Paleontology Theme	X			
Plant Species Theme			X	
Terrestrial Biodiversity Theme	X			

### Specialist assessments identified

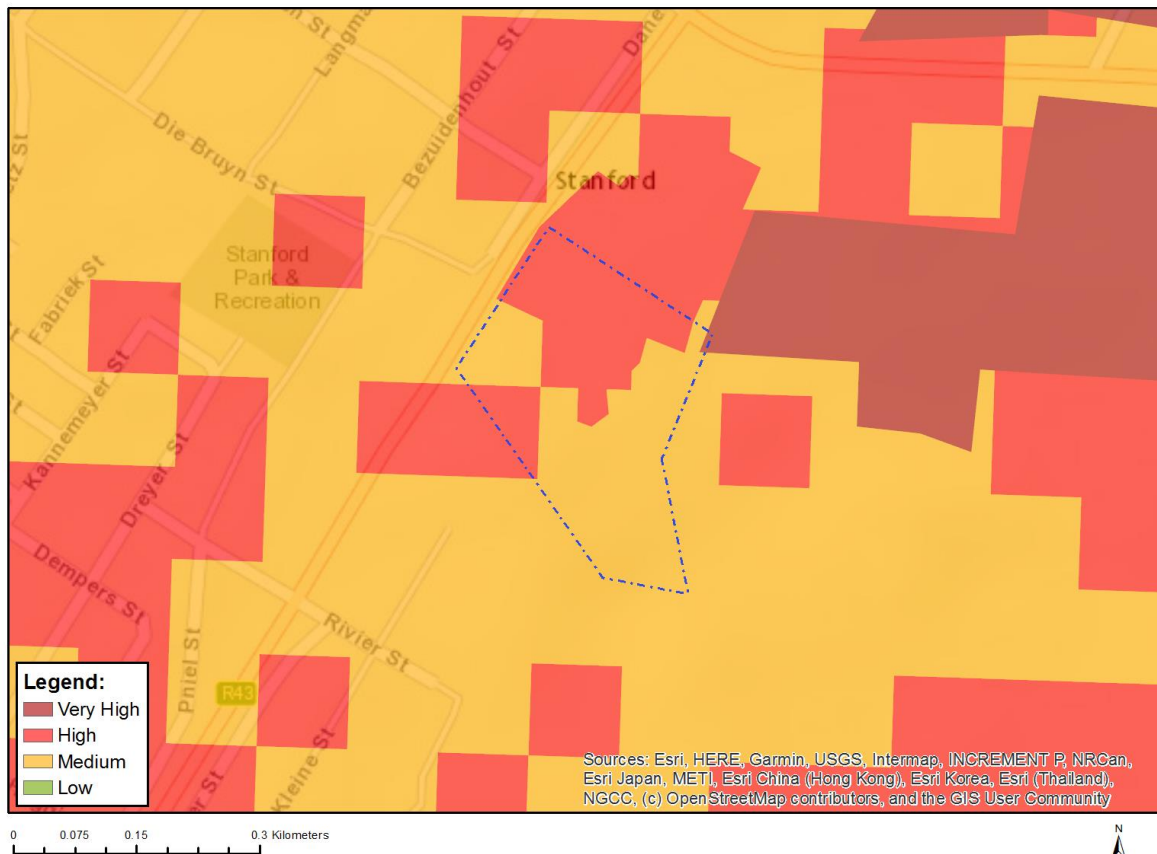
Based on the selected classification, and the known impacts associated with the proposed development, the following list of specialist assessments have been identified for inclusion in the assessment report. It is the responsibility of the EAP to confirm this list and to motivate in the assessment report, the reason for not including any of the identified specialist study including the provision of photographic evidence of the site situation.

No	Specialist assessment	Assessment Protocol
1	Landscape/Visual Impact Assessment	<a href="https://screening.environment.gov.za/ScreeningDownloads/AssessmentProtocols/Gazetted_General_Requirement_Assessment_Protocols.pdf">https://screening.environment.gov.za/ScreeningDownloads/AssessmentProtocols/Gazetted_General_Requirement_Assessment_Protocols.pdf</a>
2	Archaeological and Cultural Heritage Impact Assessment	<a href="https://screening.environment.gov.za/ScreeningDownloads/AssessmentProtocols/Gazetted_General_Requirement_Assessment_Protocols.pdf">https://screening.environment.gov.za/ScreeningDownloads/AssessmentProtocols/Gazetted_General_Requirement_Assessment_Protocols.pdf</a>
3	Palaeontology Impact Assessment	<a href="https://screening.environment.gov.za/ScreeningDownloads/AssessmentProtocols/Gazetted_General_Requirement_Assessment_Protocols.pdf">https://screening.environment.gov.za/ScreeningDownloads/AssessmentProtocols/Gazetted_General_Requirement_Assessment_Protocols.pdf</a>
4	Terrestrial Biodiversity Impact Assessment	<a href="https://screening.environment.gov.za/ScreeningDownloads/AssessmentProtocols/Gazetted_Terrestrial_Biodiversity_Assessment_Protocols.pdf">https://screening.environment.gov.za/ScreeningDownloads/AssessmentProtocols/Gazetted_Terrestrial_Biodiversity_Assessment_Protocols.pdf</a>
5	Aquatic Biodiversity Impact Assessment	<a href="https://screening.environment.gov.za/ScreeningDownloads/AssessmentProtocols/Gazetted_Aquatic_Biodiversity_Assessment_Protocols.pdf">https://screening.environment.gov.za/ScreeningDownloads/AssessmentProtocols/Gazetted_Aquatic_Biodiversity_Assessment_Protocols.pdf</a>
6	Socio-Economic Assessment	<a href="https://screening.environment.gov.za/ScreeningDownloads/AssessmentProtocols/Gazetted_General_Requirement_Assessment_Protocols.pdf">https://screening.environment.gov.za/ScreeningDownloads/AssessmentProtocols/Gazetted_General_Requirement_Assessment_Protocols.pdf</a>
7	Plant Species Assessment	<a href="https://screening.environment.gov.za/ScreeningDownloads/AssessmentProtocols/Gazetted_Plant_Species_Assessment_Protocols.pdf">https://screening.environment.gov.za/ScreeningDownloads/AssessmentProtocols/Gazetted_Plant_Species_Assessment_Protocols.pdf</a>
8	Animal Species Assessment	<a href="https://screening.environment.gov.za/ScreeningDownloads/AssessmentProtocols/Gazetted_Animal_Species_Assessment_Protocols.pdf">https://screening.environment.gov.za/ScreeningDownloads/AssessmentProtocols/Gazetted_Animal_Species_Assessment_Protocols.pdf</a>

## Results of the environmental sensitivity of the proposed area.

The following section represents the results of the screening for environmental sensitivity of the proposed site for relevant environmental themes associated with the project classification. It is the duty of the EAP to ensure that the environmental themes provided by the screening tool are comprehensive and complete for the project. Refer to the disclaimer.

### MAP OF RELATIVE AGRICULTURE THEME SENSITIVITY

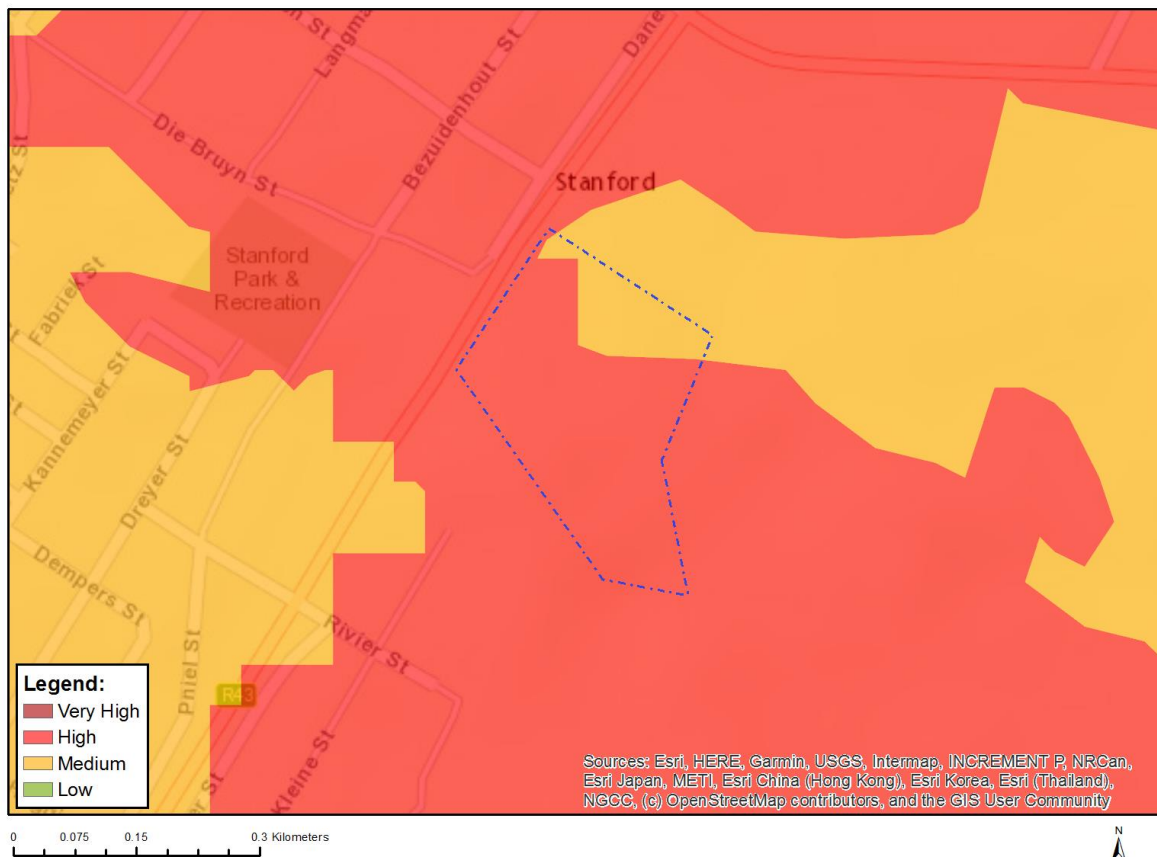


Very High sensitivity	High sensitivity	Medium sensitivity	Low sensitivity
X			

#### Sensitivity Features:

Sensitivity	Feature(s)
High	Land capability;09. Moderate-High/10. Moderate-High
High	Annual Crop Cultivation / Planted Pastures Rotation;Land capability;09. Moderate-High/10. Moderate-High
High	Annual Crop Cultivation / Planted Pastures Rotation;Land capability;06. Low-Moderate/07. Low-Moderate/08. Moderate
Medium	Land capability;06. Low-Moderate/07. Low-Moderate/08. Moderate
Very High	Viticulture;Land capability;06. Low-Moderate/07. Low-Moderate/08. Moderate

## MAP OF RELATIVE ANIMAL SPECIES THEME SENSITIVITY



Where only a sensitive plant unique number or sensitive animal unique number is provided in the screening report and an assessment is required, the environmental assessment practitioner (EAP) or specialist is required to email SANBI at [eiadatarequests@sanbi.org.za](mailto:eiadatarequests@sanbi.org.za) listing all sensitive species with their unique identifiers for which information is required. The name has been withheld as the species may be prone to illegal harvesting and must be protected. SANBI will release the actual species name after the details of the EAP or specialist have been documented.

Very High sensitivity	High sensitivity	Medium sensitivity	Low sensitivity
	X		

### Sensitivity Features:

Sensitivity	Feature(s)
High	Amphibia-Sclerophrys pantherina
High	Aves-Circus maurus
High	Aves-Circus ranivorus
High	Aves-Neotis denhami
High	Aves-Polemaetus bellicosus
Medium	Amphibia-Sclerophrys pantherina
Medium	Aves-Afrotis afra
Medium	Reptilia-Bitis armata
Medium	Invertebrate-Brinckiella aptera
Medium	Invertebrate-Aneuryphymus montanus



## MAP OF RELATIVE AQUATIC BIODIVERSITY THEME SENSITIVITY

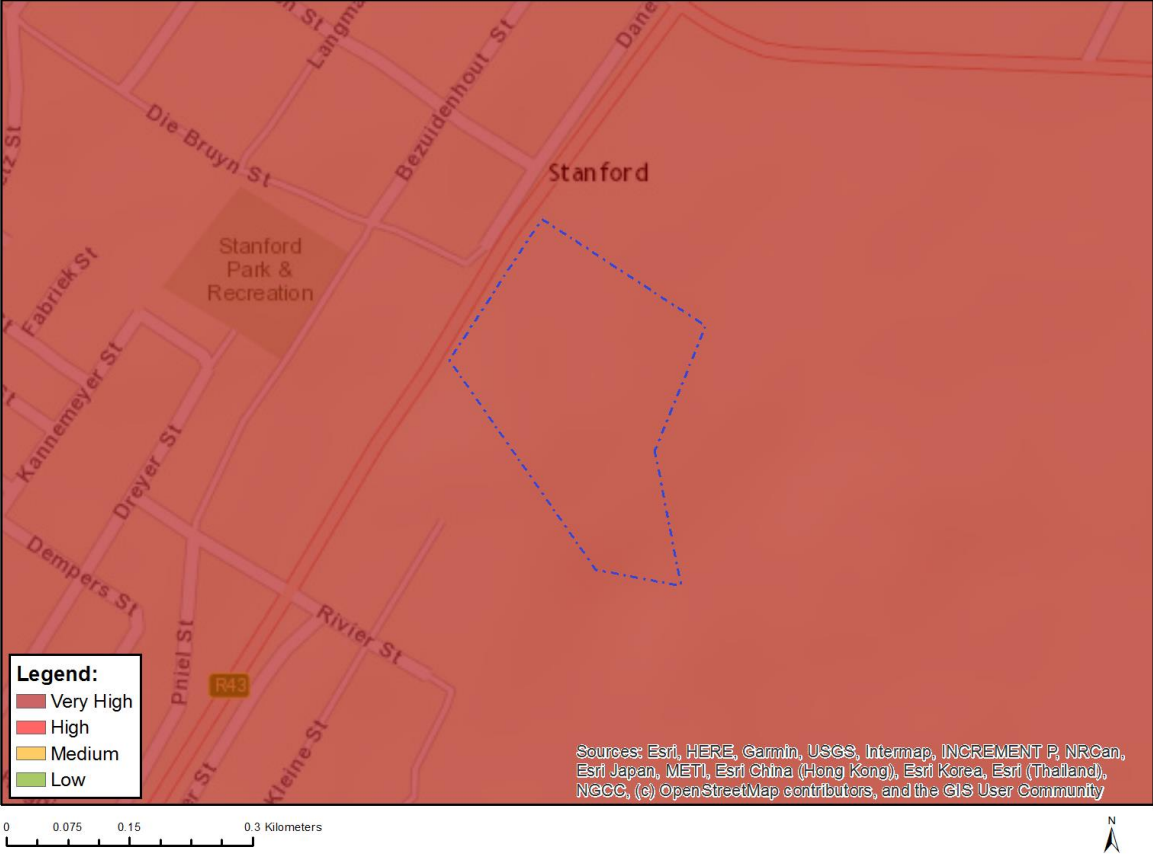


Very High sensitivity	High sensitivity	Medium sensitivity	Low sensitivity
X			

### Sensitivity Features:

Sensitivity	Feature(s)
Low	Low sensitivity
Very High	ESA 1: Aquatic
Very High	Wetlands_South Coast Fynbos Bioregion (Floodplain)

# MAP OF RELATIVE ARCHAEOLOGICAL AND CULTURAL HERITAGE THEME SENSITIVITY

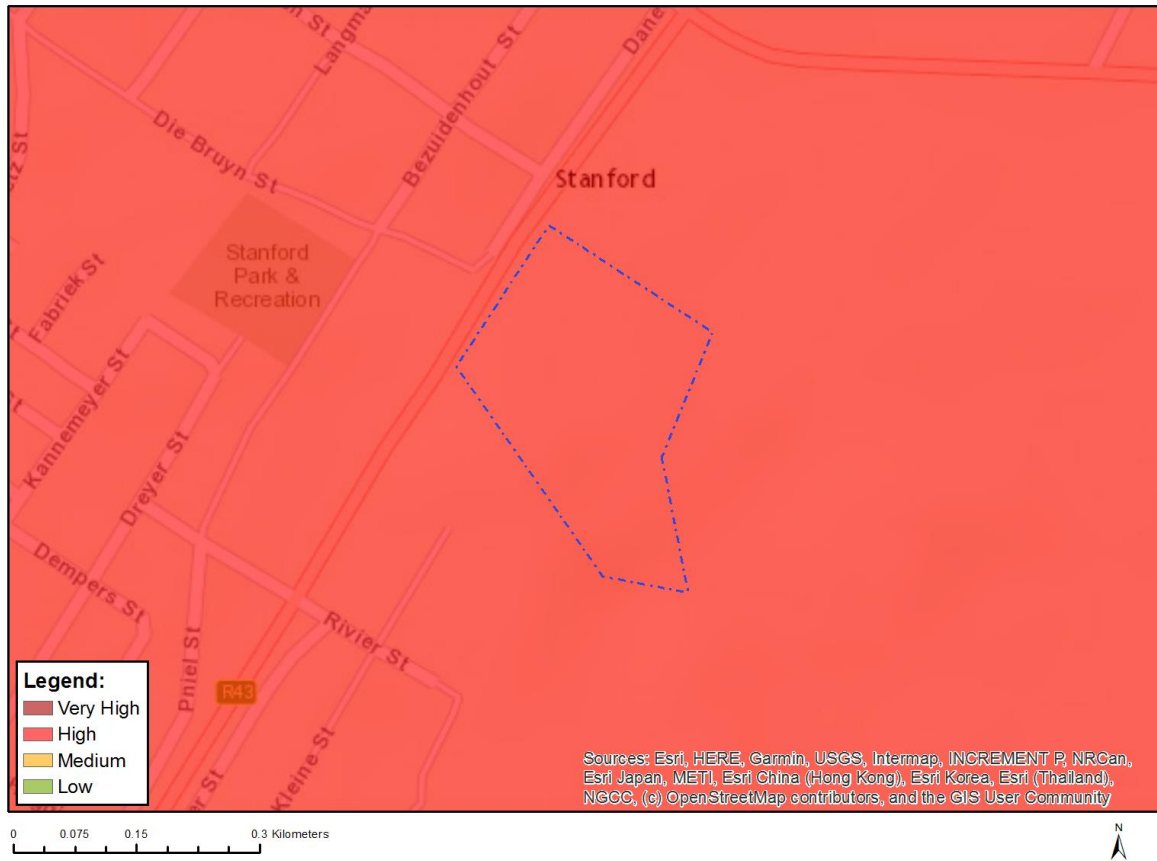


Very High sensitivity	High sensitivity	Medium sensitivity	Low sensitivity
X			

**Sensitivity Features:**

Sensitivity	Feature(s)
Very High	Within 2km of a Grade II Heritage site

## MAP OF RELATIVE CIVIL AVIATION THEME SENSITIVITY



Very High sensitivity	High sensitivity	Medium sensitivity	Low sensitivity
	X		

### Sensitivity Features:

Sensitivity	Feature(s)
High	Dangerous and restricted airspace as demarcated

## MAP OF RELATIVE DEFENCE THEME SENSITIVITY

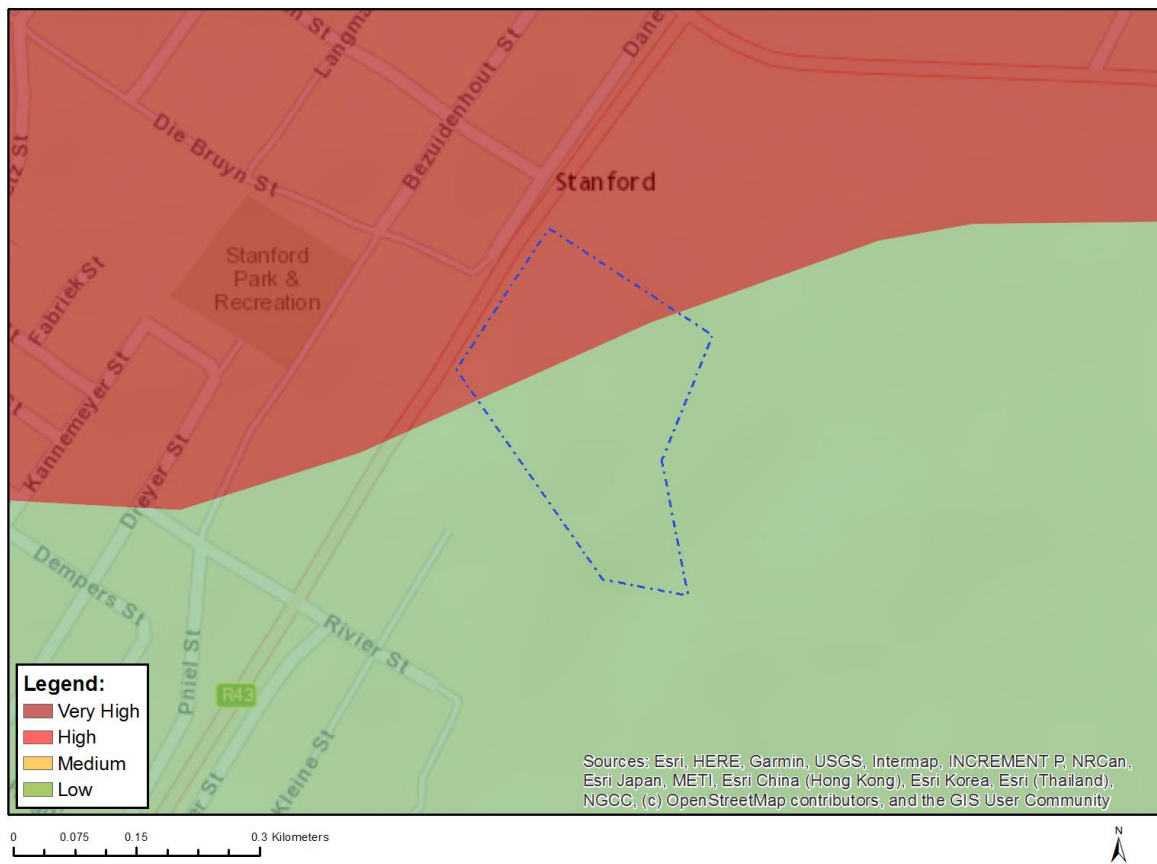


Very High sensitivity	High sensitivity	Medium sensitivity	Low sensitivity
			X

### Sensitivity Features:

Sensitivity	Feature(s)
Low	Low Sensitivity

## MAP OF RELATIVE PALEONTOLOGY THEME SENSITIVITY

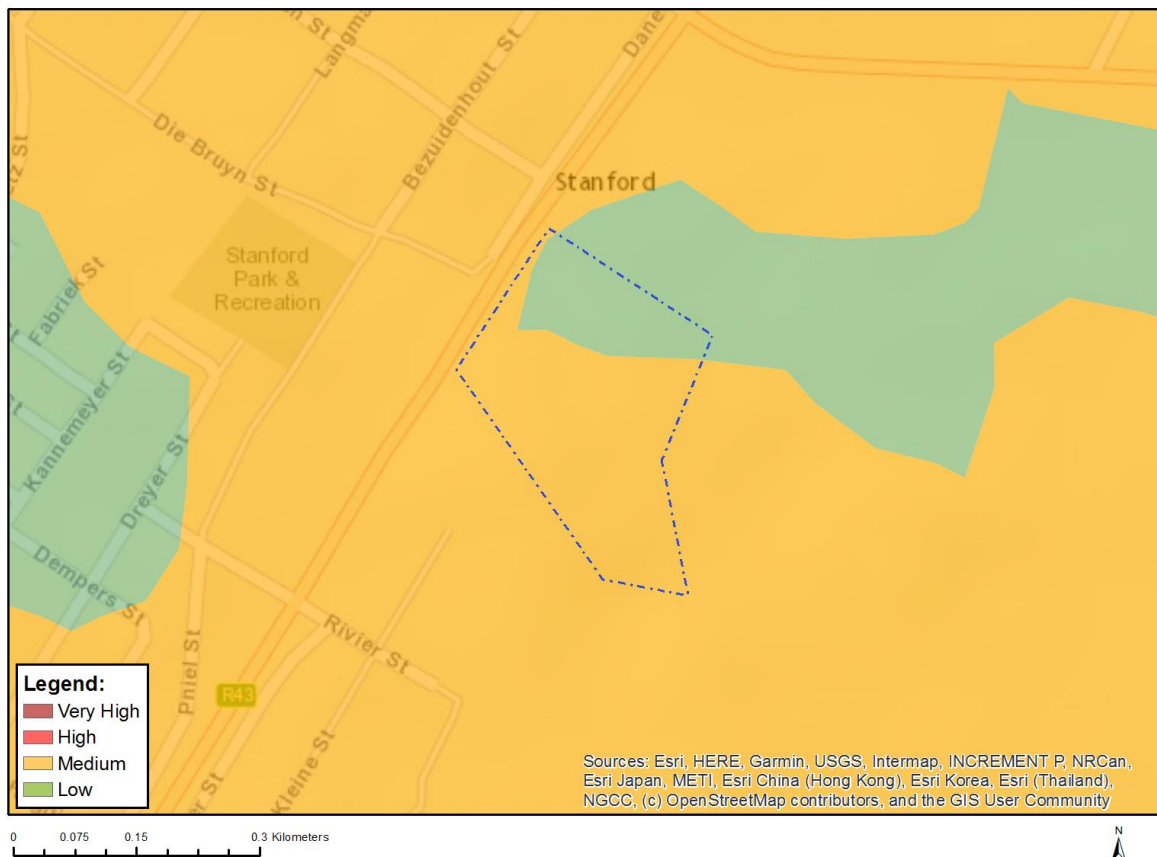


Very High sensitivity	High sensitivity	Medium sensitivity	Low sensitivity
X			

### Sensitivity Features:

Sensitivity	Feature(s)
Low	Features with a Low paleontological sensitivity
Very High	Features with a Very High paleontological sensitivity

## MAP OF RELATIVE PLANT SPECIES THEME SENSITIVITY



Where only a sensitive plant unique number or sensitive animal unique number is provided in the screening report and an assessment is required, the environmental assessment practitioner (EAP) or specialist is required to email SANBI at [eiadatarequests@sanbi.org.za](mailto:eiadatarequests@sanbi.org.za) listing all sensitive species with their unique identifiers for which information is required. The name has been withheld as the species may be prone to illegal harvesting and must be protected. SANBI will release the actual species name after the details of the EAP or specialist have been documented.

Very High sensitivity	High sensitivity	Medium sensitivity	Low sensitivity
		X	

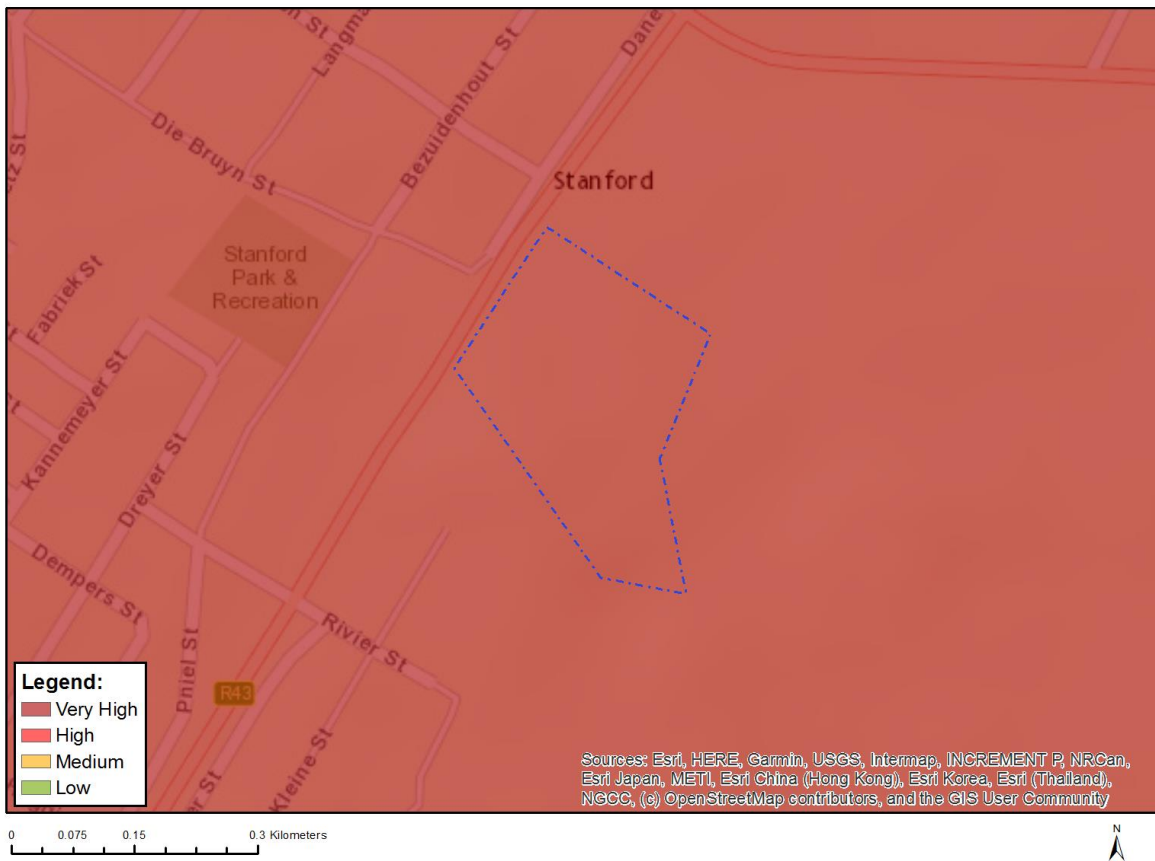
### Sensitivity Features:

Sensitivity	Feature(s)
Low	Low Sensitivity
Medium	Ocotea bullata
Medium	Lampranthus fergusoniae
Medium	Amphithalea virgata
Medium	Argyrobium pachyphyllum
Medium	Xiphotheca guthriei
Medium	Aspalathus excelsa
Medium	Aspalathus globulosa
Medium	Aspalathus millefolia
Medium	Otholobium pungens
Medium	Colpoon speciosum
Medium	Thesium ecklonianum
Medium	Leucadendron coniferum

Medium	<i>Leucadendron laxum</i>
Medium	<i>Leucadendron linifolium</i>
Medium	<i>Leucadendron modestum</i>
Medium	<i>Leucadendron platyspermum</i>
Medium	<i>Leucospermum patersonii</i>
Medium	<i>Leucospermum prostratum</i>
Medium	<i>Protea angustata</i>
Medium	<i>Protea longifolia</i>
Medium	<i>Paranomus abrotanifolius</i>
Medium	<i>Selago diffusa</i>
Medium	<i>Pentameris pholiuroides</i>
Medium	<i>Lobostemon capitatus</i>
Medium	<i>Lobostemon lucidus</i>
Medium	<i>Echiostachys ecklonianus</i>
Medium	<i>Aristea teretifolia</i>
Medium	<i>Tritoniopsis flexuosa</i>
Medium	<i>Ixia longituba</i> subsp. <i>longituba</i>
Medium	Sensitive species 629
Medium	Sensitive species 137
Medium	Sensitive species 247
Medium	Sensitive species 499
Medium	<i>Pauridia alba</i>
Medium	<i>Oxalis duriuscula</i>
Medium	<i>Erica brachysepala</i>
Medium	<i>Erica irregularis</i>
Medium	<i>Erica melanacme</i>
Medium	<i>Erica patersonii</i>
Medium	<i>Erica propendens</i>
Medium	<i>Erica riparia</i>
Medium	<i>Erica radicans</i> subsp. <i>schlechteri</i>
Medium	<i>Erica perspicua</i> subsp. <i>latifolia</i>
Medium	Sensitive species 1142
Medium	<i>Thamnochortus dumosus</i>
Medium	<i>Thamnochortus pellucidus</i>
Medium	<i>Staberoha multispicula</i>
Medium	<i>Elegia fenestrata</i>
Medium	<i>Hypodiscus rugosus</i>
Medium	<i>Restio harveyi</i>
Medium	<i>Restio anomalus</i>
Medium	<i>Restio papillosus</i>
Medium	Sensitive species 1139
Medium	<i>Pterygodium vermiferum</i>
Medium	<i>Gnidia ornata</i>
Medium	<i>Passerina paludosa</i>
Medium	<i>Metalasia plicata</i>
Medium	<i>Cotula myriophylloides</i>
Medium	<i>Pteronia tenuifolia</i>
Medium	<i>Arctotheca forbesiana</i>
Medium	<i>Cullumia squarrosa</i>
Medium	<i>Diosma subulata</i>
Medium	<i>Agathosma abrupta</i>
Medium	<i>Euchaetis schlechteri</i>
Medium	<i>Cliffortia ericifolia</i>
Medium	<i>Cliffortia longifolia</i>
Medium	<i>Cliffortia anthospermoides</i>
Medium	Sensitive species 719
Medium	Sensitive species 1151
Medium	Sensitive species 547
Medium	<i>Phyllica lucida</i>
Medium	<i>Orthochilus litoralis</i>

Medium	Skiatophytum skiatophytoides
Medium	Lampranthus debilis
Medium	Aponogeton fugax
Medium	Protea aspera
Medium	Paranomus bolusii
Medium	Sensitive species 593
Medium	Sensitive species 800
Medium	Sensitive species 335
Medium	Sensitive species 599
Medium	Elegia squamosa
Medium	Elegia verreauxii
Medium	Restio paludosus
Medium	Restio rigoratus
Medium	Sensitive species 500
Medium	Sensitive species 53
Medium	Lachnaea grandiflora
Medium	Zostera capensis

### MAP OF RELATIVE TERRESTRIAL BIODIVERSITY THEME SENSITIVITY



Very High sensitivity	High sensitivity	Medium sensitivity	Low sensitivity
X			

**Sensitivity Features:**

Sensitivity	Feature(s)
-------------	------------



Very High	ESA 2: Restore from other land use
Very High	ESA 1
Very High	EN_Elim Ferricrete Fynbos
Very High	CR_Agulhas Limestone Fynbos

OFFICIAL