

**APPENDIX C:**  
**SITE DEVELOPMENT PLAN**

**Consultant:**

**Michelle Naylor** | Env. Consultant | M.Sc., Pr. Sci. Nat., EAPSA  
cell: 083 245 6556 | [michelle@lornay.co.za](mailto:michelle@lornay.co.za) | [www.lornay.co.za](http://www.lornay.co.za)  
Unit 5/1F, Hemel & Aarde Wine Village, Hermanus  
Lornay Environmental Consulting Pty Ltd | Reg 2015/445417/07

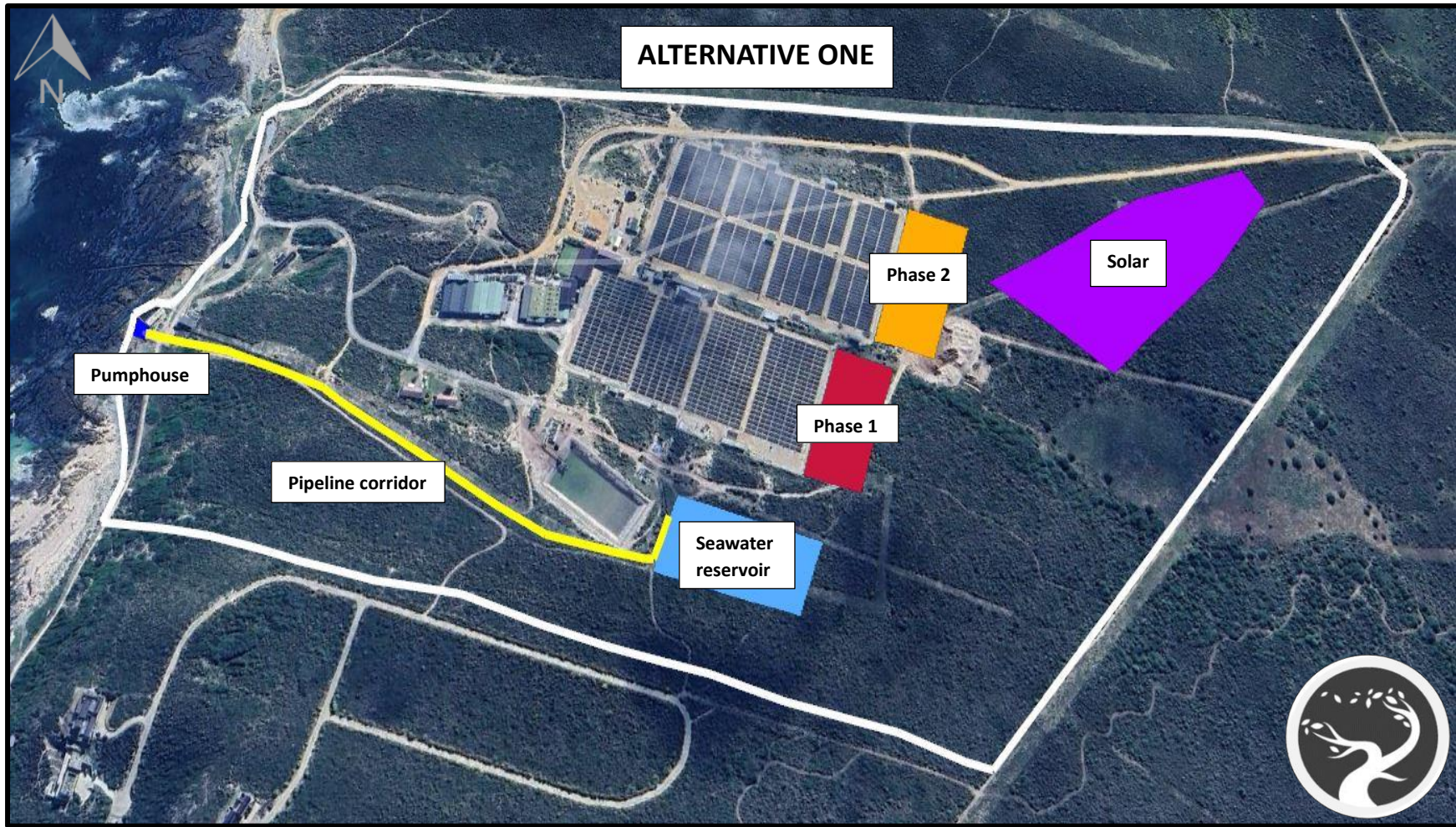


Figure 1: Illustration of alternative one layout.

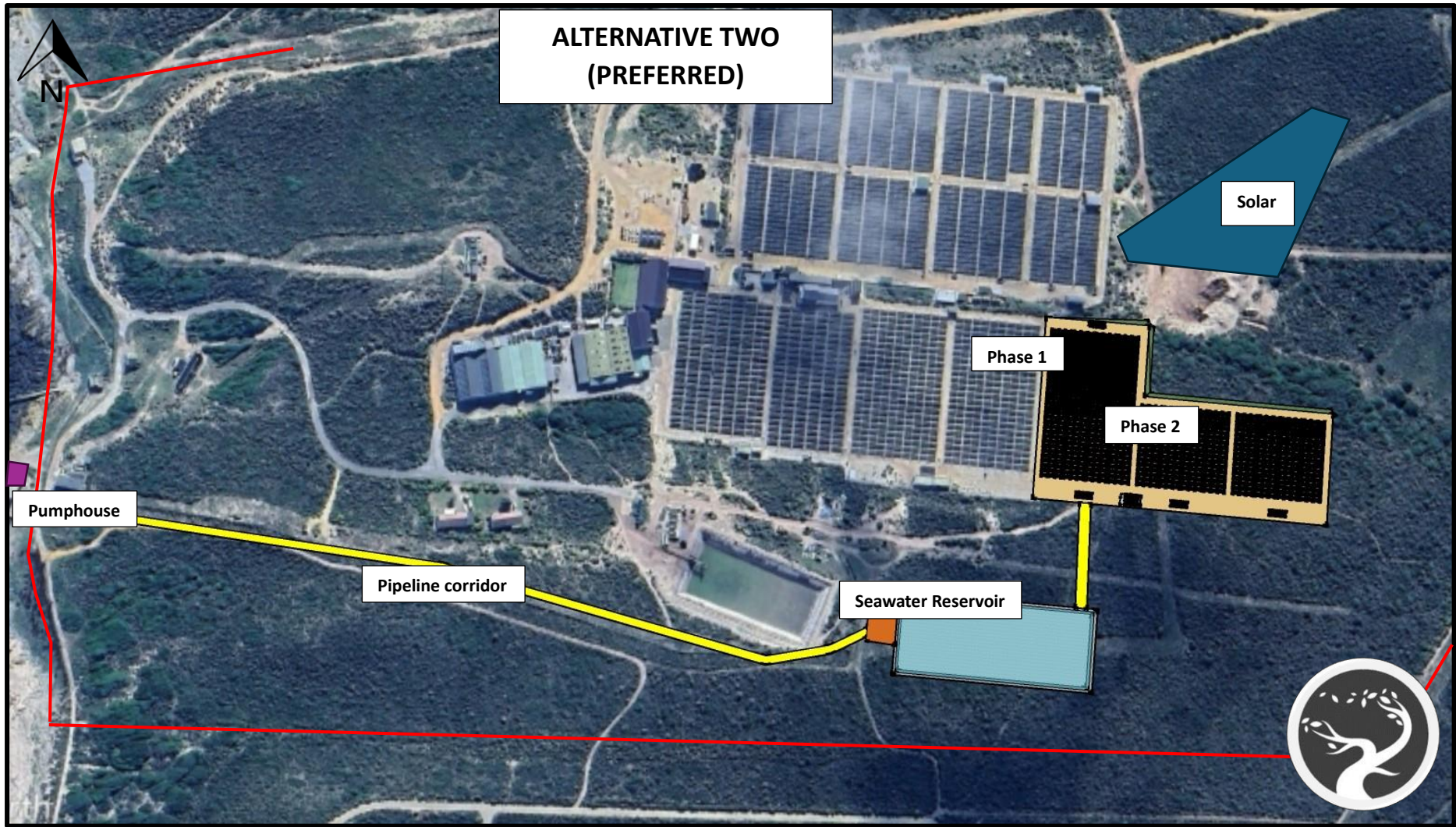
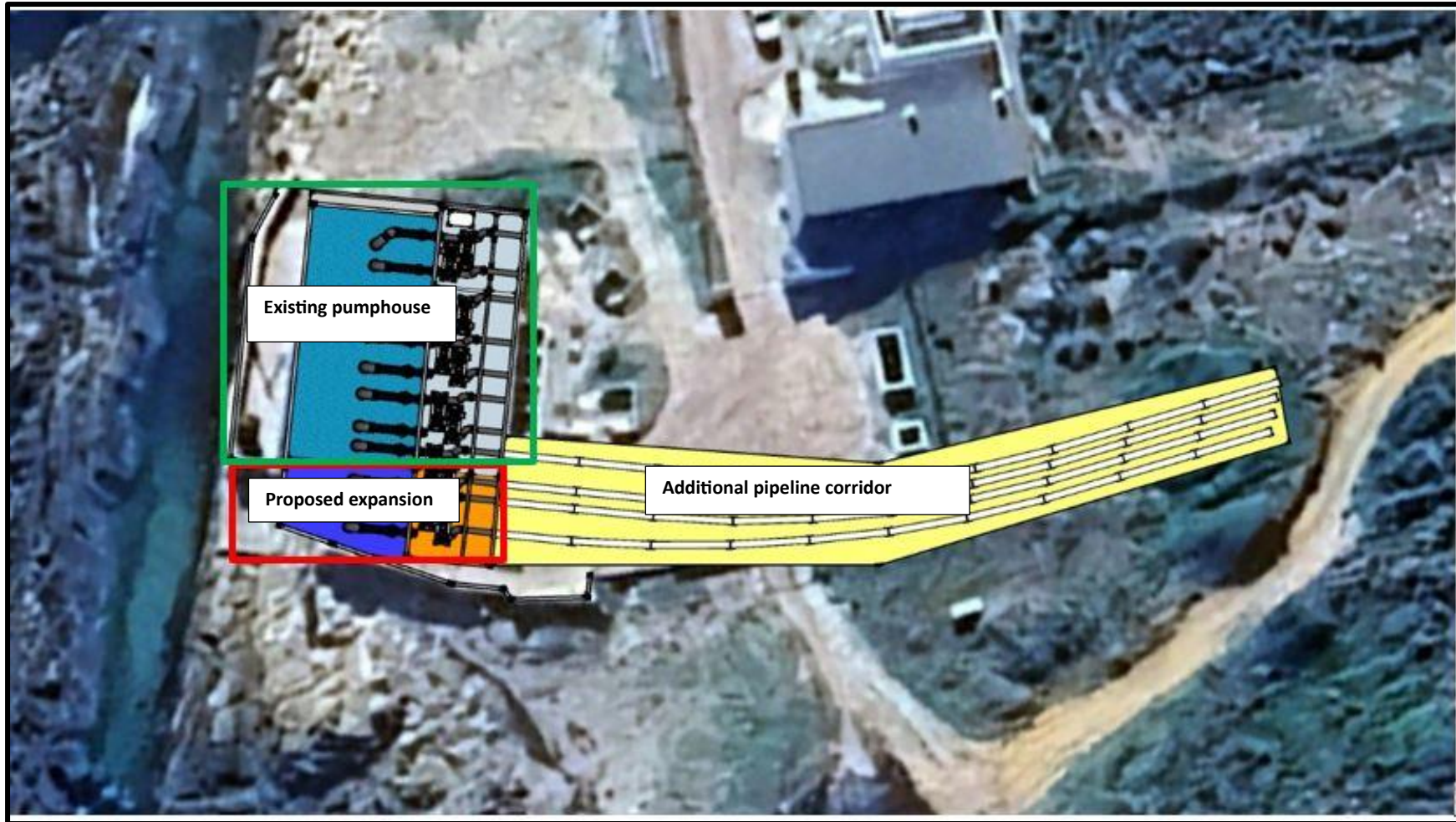
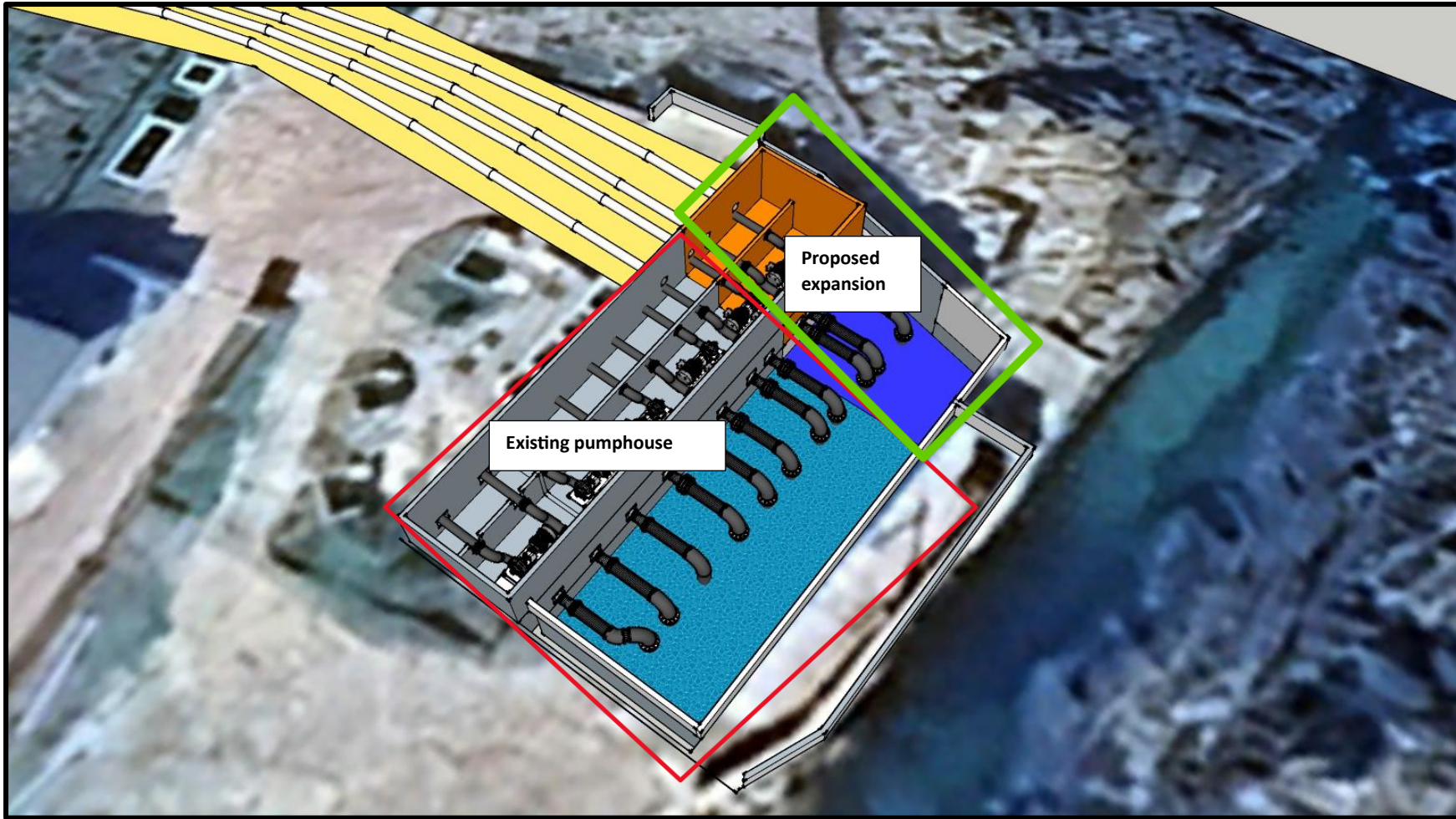


Figure 2: Alternative layout two is preferred



**Figure 3:** The existing pumphouse (green) will be extended (red) for the installation of new additional pipelines.



**Figure 4:** 3D view of the existing pumphouse and the proposed expansion area.

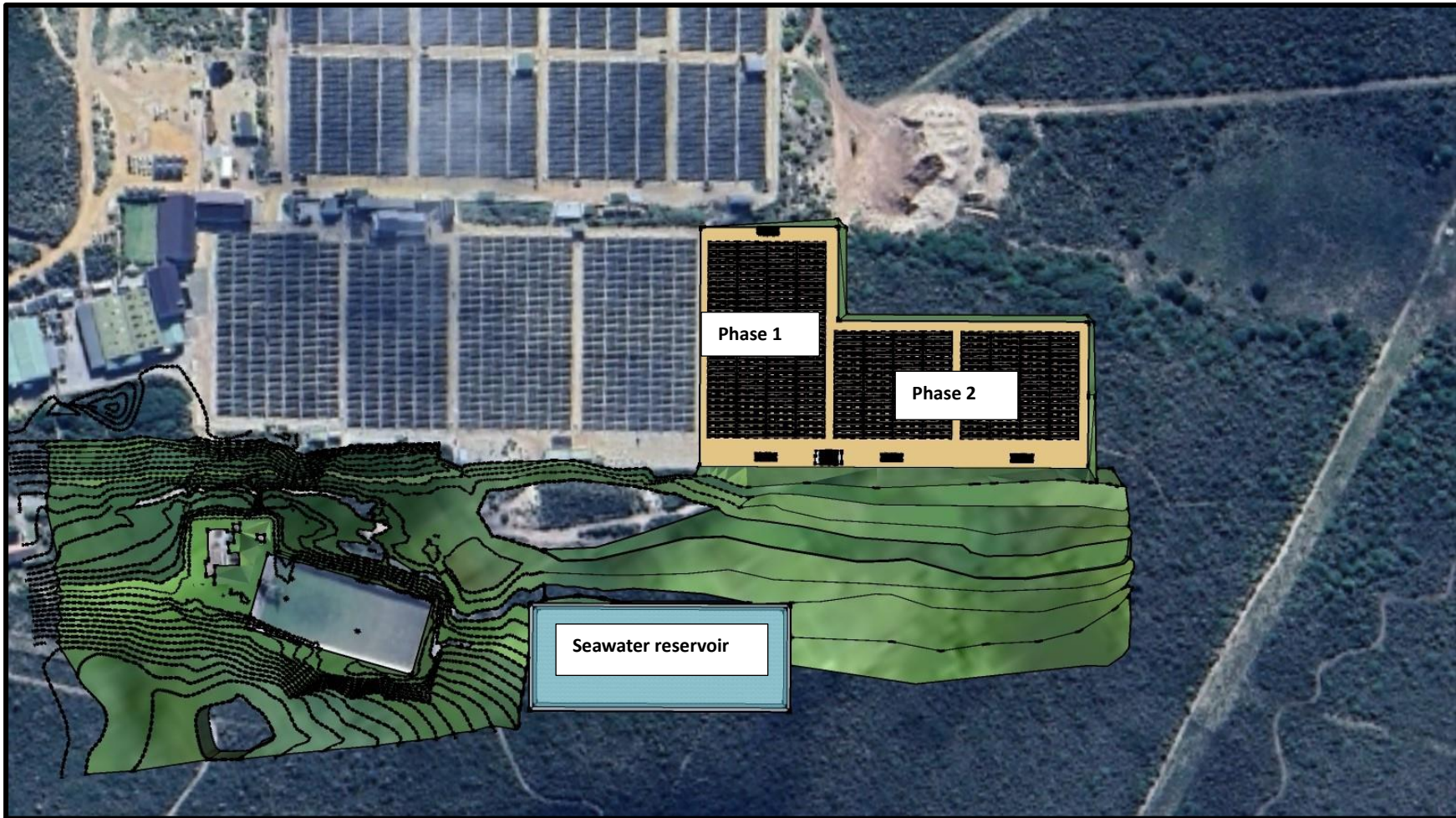
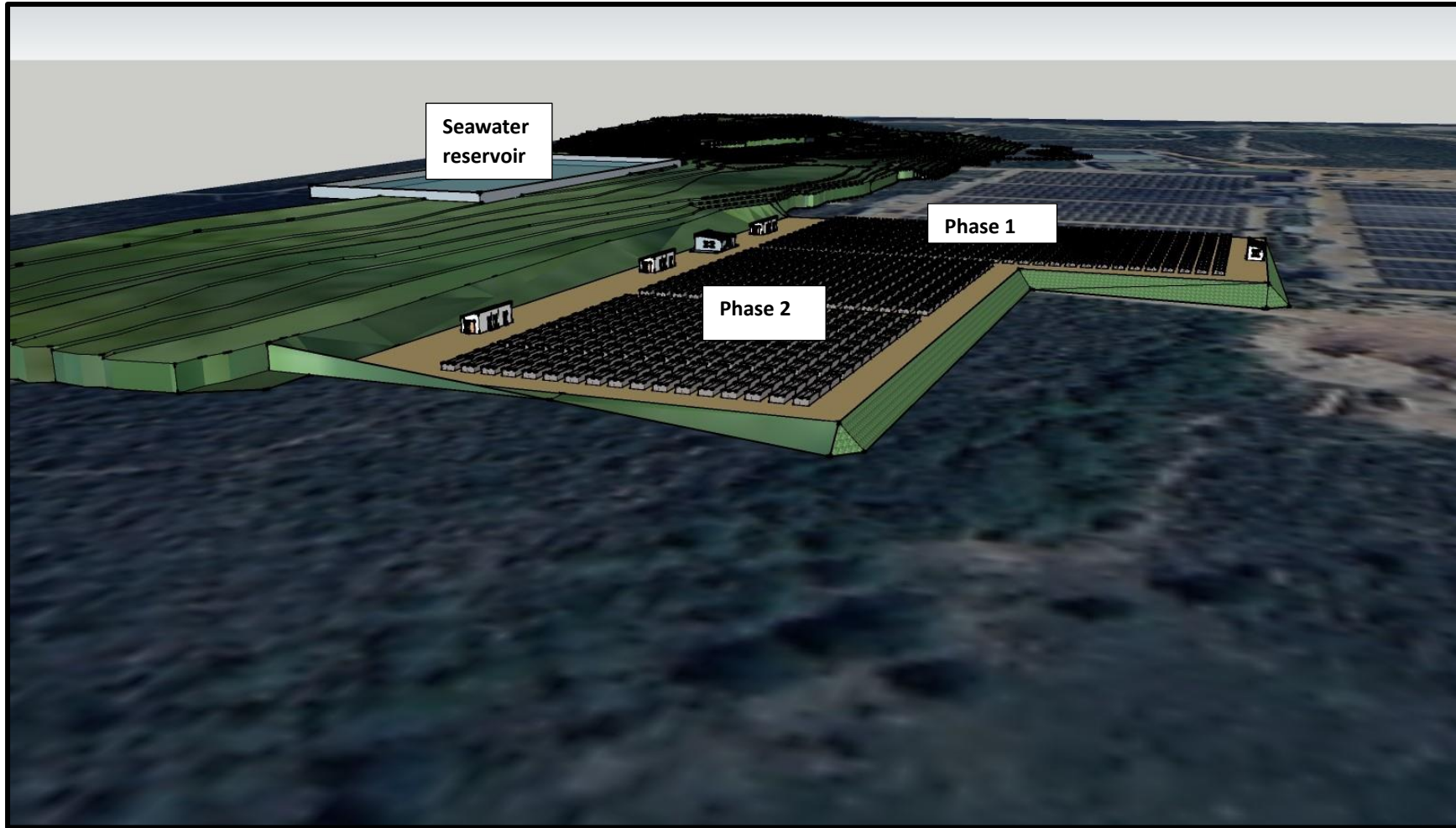


Figure 5: Overview of the proposed seawater reservoir and the new production area (phase 1 and phase 2) proposed.



**Figure 6:** A 3D view showing the location of the production area and the new seawater reservoir.