



Agency for Cultural Resource Management
Specialists in Archaeological Studies and Heritage Resource Management

04 September 2024

Chané Herman
Heritage Western Cape
Protea Assurance Building
Green Market Square
Cape Town

Chane.herman@westerncape.gov.za

Dear Chané,

ARCHAEOLOGICAL ASSESSMENT OF THE NORTHERN PORTION OF ERF 4439, SIMONSTOWN (HWC CASE 24062622)

Your email dated 15 August 2024, refers.

I visited the site on the 23 August and conducted a detailed assessment of the Northern Portion of Erf 4439, Simonstown (Figures 1 & 2).

The (steep) sandy slope leading down to the stream from the residential flats is covered in thick Kikuyu grass, building rubble and concrete, likely the result of construction of the flats. The slope has also been shaped and 'landscaped' to some extent as well.

The steep slope on the other side of the small, non-perennial stream appears to be part of a remnant sand dune, since stabilized by thick invasive alien vegetation (Figures 3-6). Dune mole rat activity is widespread on the upper slopes, where the sand is soft and loose.

I walked around, as much as I could, but as indicated the slopes are covered in impenetrable invasive vegetation. Thick Kikuyu grass also covers the lower slopes of the dune resulting in low archaeological visibility. The small stream is also degraded and choked with grass and invasive vegetation.

A relatively large amount of domestic refuse including glass, condiment jars, broken bottles, broken ceramic plates (typical domestic kitchen ware), some late 19/early 20th Century Blue and White porcelain, bottle tops, rusted metal, hard plastic, and a golf ball, were encountered, scattered across the steep mid and upper slopes of the remnant dune.

No ruins or structures associated with the historic Luyolo Village was noted, nor were any pre-colonial Stone Age archaeological resources encountered. It is likely that the 'cultural remains' encountered on the upper slopes of the dune were dumped there by the residents of Luyolo Village before it was demolished by the Nationalist Governments in 1965. The remains have been graded as 'Not Conservation Worthy' (NCW)

It is my opinion therefore, that no further archaeological mitigation is required, as no development is envisaged on the steep, northern portion of Erf 4399 Simonstown

Kind regards,

Jonathan Kaplan

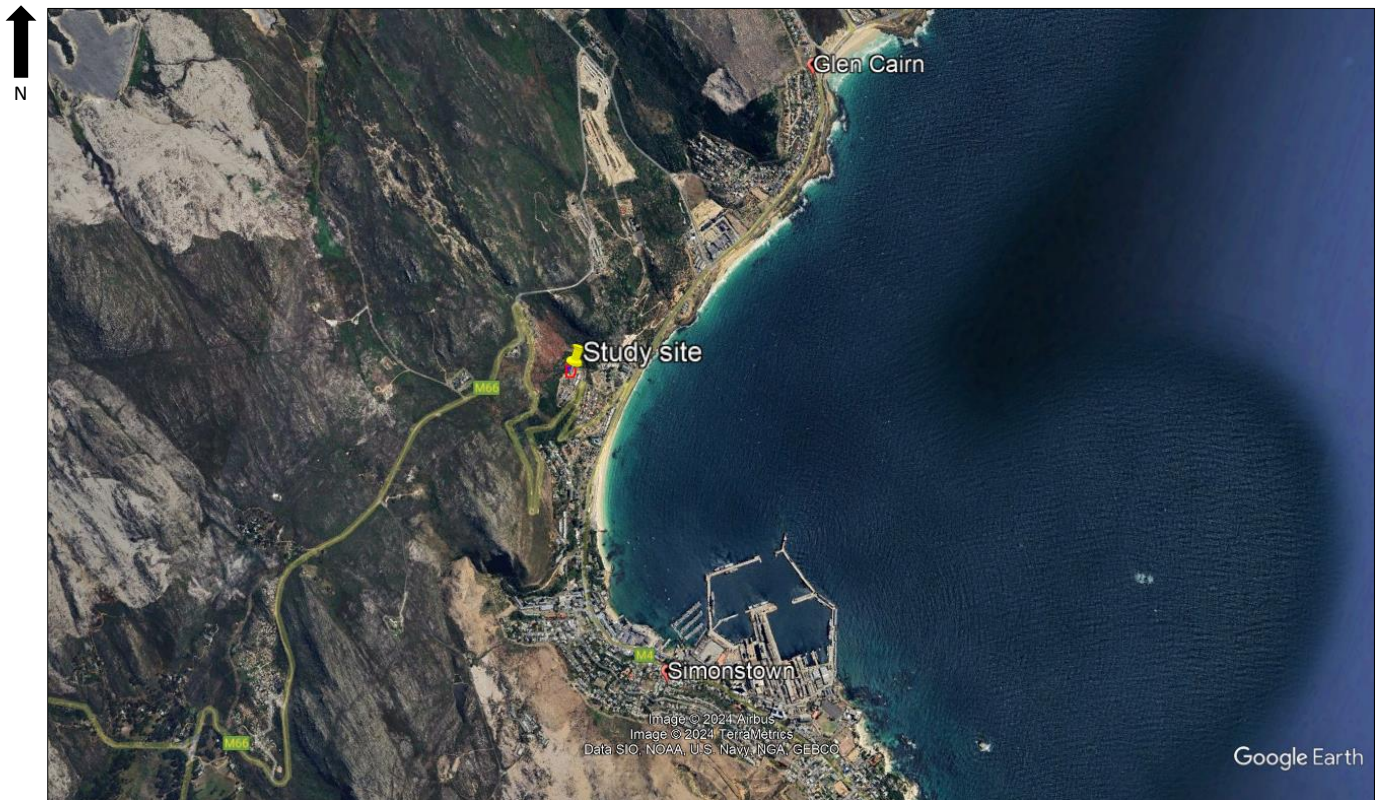


Figure 1. Google Earth Satellite Map of the study site, in Simonstown



Figure 2. Trackpaths and waypoints of finds



Figure 3. The northern portion of Erf 4439 is infested with invasive alien vegetation. View facing north (23 August 2024)



Figure 4. The northern portion of Erf 4439 is infested with invasive alien vegetation. View facing north (23 August 2024)



Figure 5. The northern portion of Erf 4439 is infested with invasive alien vegetation. View facing south (23 August 2024)



Figure 6. The northern portion of Erf 4439 is infested with invasive alien vegetation. View facing south (23 August 2024)