

**SCREENING REPORT FOR AN ENVIRONMENTAL AUTHORIZATION AS  
REQUIRED BY THE 2014 EIA REGULATIONS – PROPOSED SITE  
ENVIRONMENTAL SENSITIVITY**

**EIA Reference number:** 0

**Project name:** Proposed development of the residential housing on Erf 4439, Simon's Town, Cape RD

**Project title:** Proposed development of the residential housing on Erf 4439, Simon's Town, Cape RD

**Date screening report generated:** 19/04/2024 11:51:36

**Applicant:** Henque 3030 CC

**Compiler:** Lornay Environmental Consulting

**Compiler signature:**  
.....

**Application Category:** Transformation of land|Indigenous vegetation

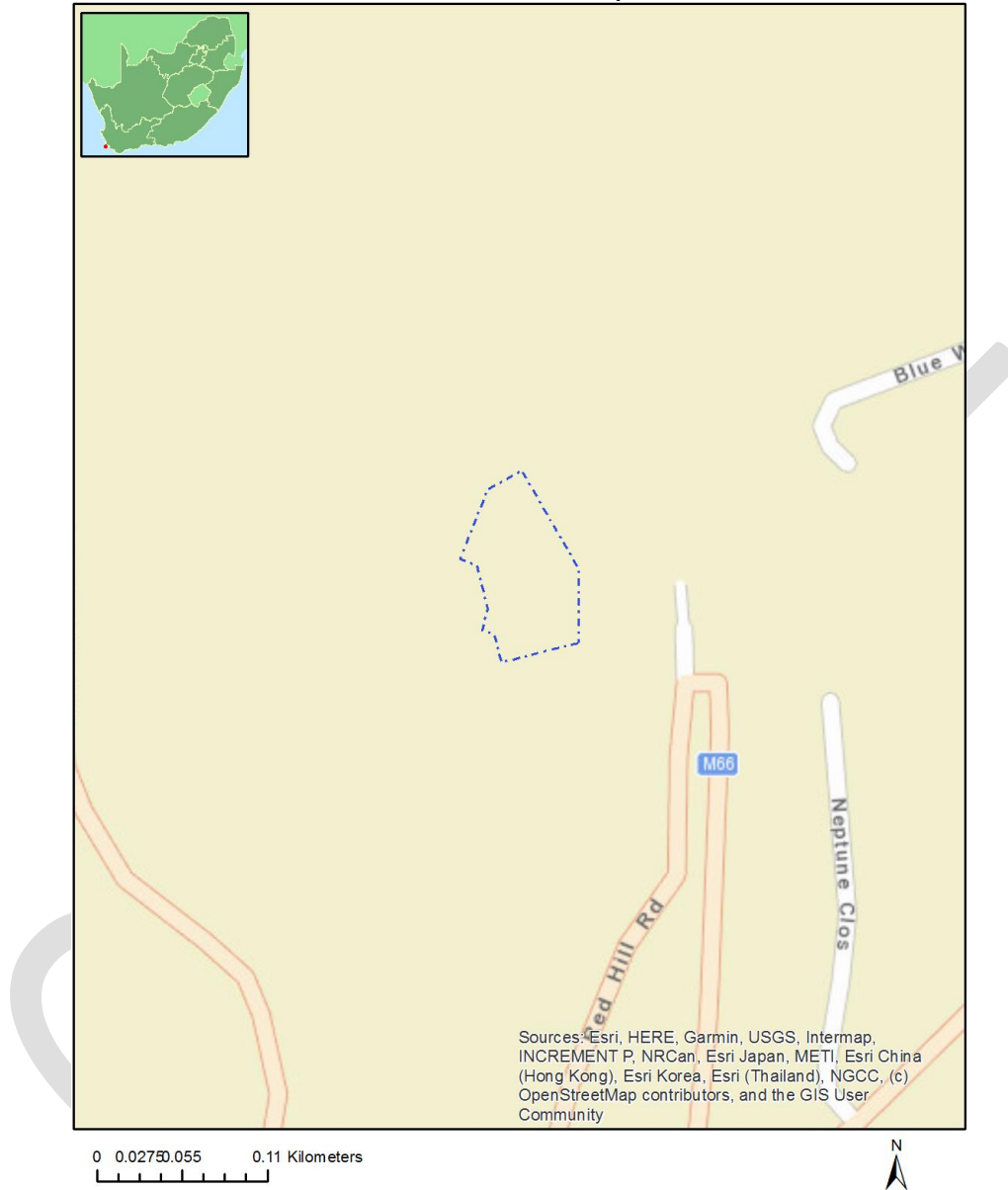
# Table of Contents

- Proposed Project Location ..... 3
  - Orientation map 1: General location ..... 3
- Map of proposed site and relevant area(s) ..... 4
  - Cadastral details of the proposed site ..... 4
  - Wind and Solar developments with an approved Environmental Authorisation or applications under consideration within 30 km of the proposed area ..... 4
  - Environmental Management Frameworks relevant to the application ..... 4
- Environmental screening results and assessment outcomes ..... 5
  - Relevant development incentives, restrictions, exclusions or prohibitions ..... 5
  - Proposed Development Area Environmental Sensitivity ..... 5
  - Specialist assessments identified ..... 5
- Results of the environmental sensitivity of the proposed area ..... 7
  - MAP OF RELATIVE AGRICULTURE THEME SENSITIVITY ..... 7
  - MAP OF RELATIVE ANIMAL SPECIES THEME SENSITIVITY ..... 8
  - MAP OF RELATIVE AQUATIC BIODIVERSITY THEME SENSITIVITY ..... 9
  - MAP OF RELATIVE ARCHAEOLOGICAL AND CULTURAL HERITAGE THEME SENSITIVITY ..... 10
  - MAP OF RELATIVE CIVIL AVIATION THEME SENSITIVITY ..... 11
  - MAP OF RELATIVE DEFENCE THEME SENSITIVITY ..... 12
  - MAP OF RELATIVE PALEONTOLOGY THEME SENSITIVITY ..... 13
  - MAP OF RELATIVE PLANT SPECIES THEME SENSITIVITY ..... 14
  - MAP OF RELATIVE TERRESTRIAL BIODIVERSITY THEME SENSITIVITY ..... 17

# Proposed Project Location

## Orientation map 1: General location

**General Orientation: Proposed development of the residential housing on Erf 4439, Simon's Town, Cape RD**



## Map of proposed site and relevant area(s)



## Cadastral details of the proposed site

Property details:

No	Farm Name	Farm/ Erf No	Portion	Latitude	Longitude	Property Type
1	SIMON'S TOWN	4439	0	34°10'48.56S	18°25'17.4E	Erven
2	SIMON'S TOWN	4067	0	34°10'51.76S	18°25'14.89E	Erven

Development footprint<sup>1</sup> vertices:  
No development footprint(s) specified.

## Wind and Solar developments with an approved Environmental Authorisation or applications under consideration within 30 km of the proposed area

No nearby wind or solar developments found.

## Environmental Management Frameworks relevant to the application

No intersections with EMF areas found.

<sup>1</sup> "development footprint", means the area within the site on which the development will take place and includes all ancillary developments for example roads, power lines, boundary walls, paving etc. which require vegetation clearance or which will be disturbed and for which the application has been submitted.

## Environmental screening results and assessment outcomes

The following sections contain a summary of any development incentives, restrictions, exclusions or prohibitions that apply to the proposed development site as well as the most environmental sensitive features on the site based on the site sensitivity screening results for the application classification that was selected. The application classification selected for this report is:

**Transformation of land | Indigenous vegetation.**

### Relevant development incentives, restrictions, exclusions or prohibitions

The following development incentives, restrictions, exclusions or prohibitions and their implications that apply to this site are indicated below.

Incentive, restriction or prohibition	Implication
Strategic Transmission Corridor-Central corridor	<a href="https://screening.environment.gov.za/ScreeningDownloads/DevelopmentZones/Combined_EGI.pdf">https://screening.environment.gov.za/ScreeningDownloads/DevelopmentZones/Combined_EGI.pdf</a>
South African Protected Areas	<a href="https://screening.environment.gov.za/ScreeningDownloads/DevelopmentZones/SAPAD_OR_2023_Q3_Metadata.pdf">https://screening.environment.gov.za/ScreeningDownloads/DevelopmentZones/SAPAD_OR_2023_Q3_Metadata.pdf</a>

### Proposed Development Area Environmental Sensitivity

The following summary of the development site environmental sensitivities is identified. Only the highest environmental sensitivity is indicated. The footprint environmental sensitivities for the proposed development footprint as identified, are indicative only and must be verified on site by a suitably qualified person before the specialist assessments identified below can be confirmed.

Theme	Very High sensitivity	High sensitivity	Medium sensitivity	Low sensitivity
Agriculture Theme				X
Animal Species Theme			X	
Aquatic Biodiversity Theme	X			
Archaeological and Cultural Heritage Theme	X			
Civil Aviation Theme		X		
Defence Theme	X			
Paleontology Theme			X	
Plant Species Theme			X	
Terrestrial Biodiversity Theme	X			

### Specialist assessments identified

Based on the selected classification, and the known impacts associated with the proposed development, the following list of specialist assessments have been identified for inclusion in the assessment report. It is the responsibility of the EAP to confirm this list and to motivate in the assessment report, the reason for not including any of the identified specialist study including the provision of photographic evidence of the site situation.

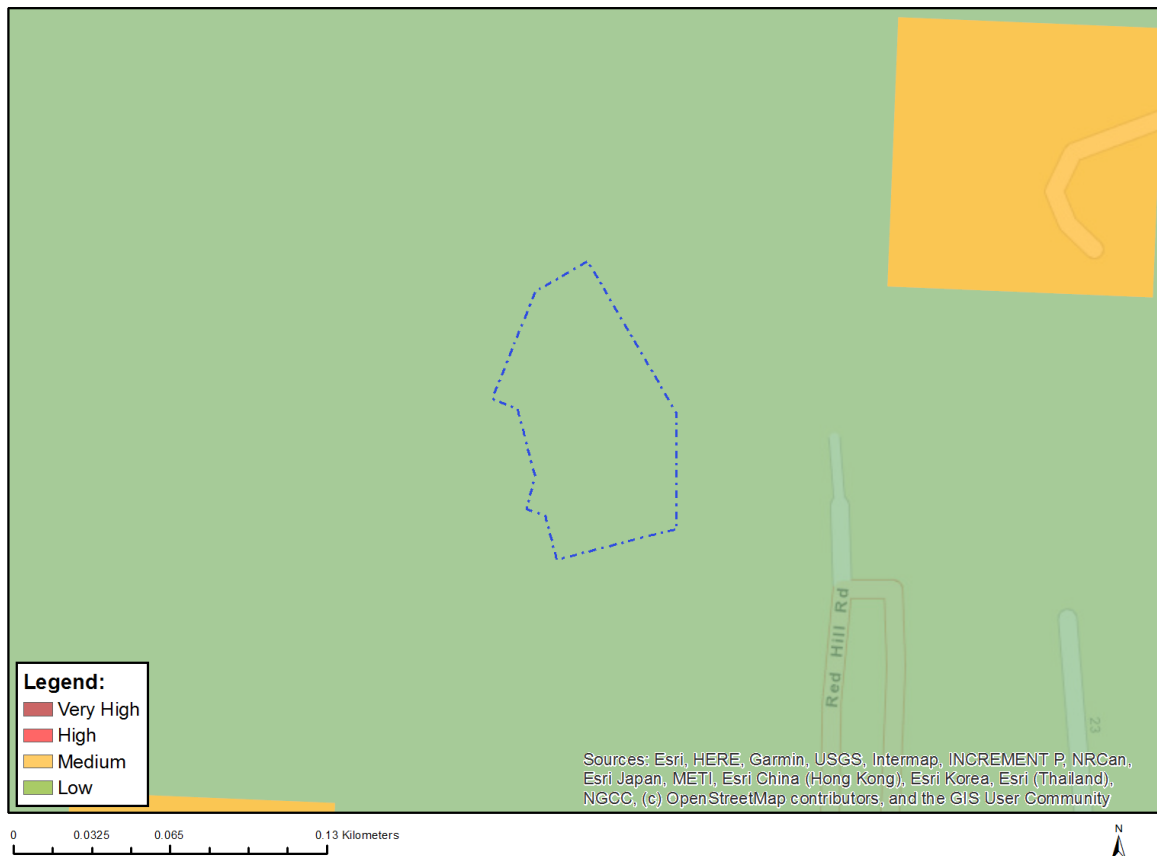
No	Specialist assessment	Assessment Protocol
----	-----------------------	---------------------

1	Landscape/Visual Impact Assessment	<a href="https://screening.environment.gov.za/ScreeningDownloads/AssessmentProtocols/Gazetted_General_Requirement_Assessment_Protocols.pdf">https://screening.environment.gov.za/ScreeningDownloads/AssessmentProtocols/Gazetted_General_Requirement_Assessment_Protocols.pdf</a>
2	Archaeological and Cultural Heritage Impact Assessment	<a href="https://screening.environment.gov.za/ScreeningDownloads/AssessmentProtocols/Gazetted_General_Requirement_Assessment_Protocols.pdf">https://screening.environment.gov.za/ScreeningDownloads/AssessmentProtocols/Gazetted_General_Requirement_Assessment_Protocols.pdf</a>
3	Palaeontology Impact Assessment	<a href="https://screening.environment.gov.za/ScreeningDownloads/AssessmentProtocols/Gazetted_General_Requirement_Assessment_Protocols.pdf">https://screening.environment.gov.za/ScreeningDownloads/AssessmentProtocols/Gazetted_General_Requirement_Assessment_Protocols.pdf</a>
4	Terrestrial Biodiversity Impact Assessment	<a href="https://screening.environment.gov.za/ScreeningDownloads/AssessmentProtocols/Gazetted_Terrestrial_Biodiversity_Assessment_Protocols.pdf">https://screening.environment.gov.za/ScreeningDownloads/AssessmentProtocols/Gazetted_Terrestrial_Biodiversity_Assessment_Protocols.pdf</a>
5	Aquatic Biodiversity Impact Assessment	<a href="https://screening.environment.gov.za/ScreeningDownloads/AssessmentProtocols/Gazetted_Aquatic_Biodiversity_Assessment_Protocols.pdf">https://screening.environment.gov.za/ScreeningDownloads/AssessmentProtocols/Gazetted_Aquatic_Biodiversity_Assessment_Protocols.pdf</a>
6	Socio-Economic Assessment	<a href="https://screening.environment.gov.za/ScreeningDownloads/AssessmentProtocols/Gazetted_General_Requirement_Assessment_Protocols.pdf">https://screening.environment.gov.za/ScreeningDownloads/AssessmentProtocols/Gazetted_General_Requirement_Assessment_Protocols.pdf</a>
7	Plant Species Assessment	<a href="https://screening.environment.gov.za/ScreeningDownloads/AssessmentProtocols/Gazetted_Plant_Species_Assessment_Protocols.pdf">https://screening.environment.gov.za/ScreeningDownloads/AssessmentProtocols/Gazetted_Plant_Species_Assessment_Protocols.pdf</a>
8	Animal Species Assessment	<a href="https://screening.environment.gov.za/ScreeningDownloads/AssessmentProtocols/Gazetted_Animal_Species_Assessment_Protocols.pdf">https://screening.environment.gov.za/ScreeningDownloads/AssessmentProtocols/Gazetted_Animal_Species_Assessment_Protocols.pdf</a>

## Results of the environmental sensitivity of the proposed area.

The following section represents the results of the screening for environmental sensitivity of the proposed site for relevant environmental themes associated with the project classification. It is the duty of the EAP to ensure that the environmental themes provided by the screening tool are comprehensive and complete for the project. Refer to the disclaimer.

### MAP OF RELATIVE AGRICULTURE THEME SENSITIVITY

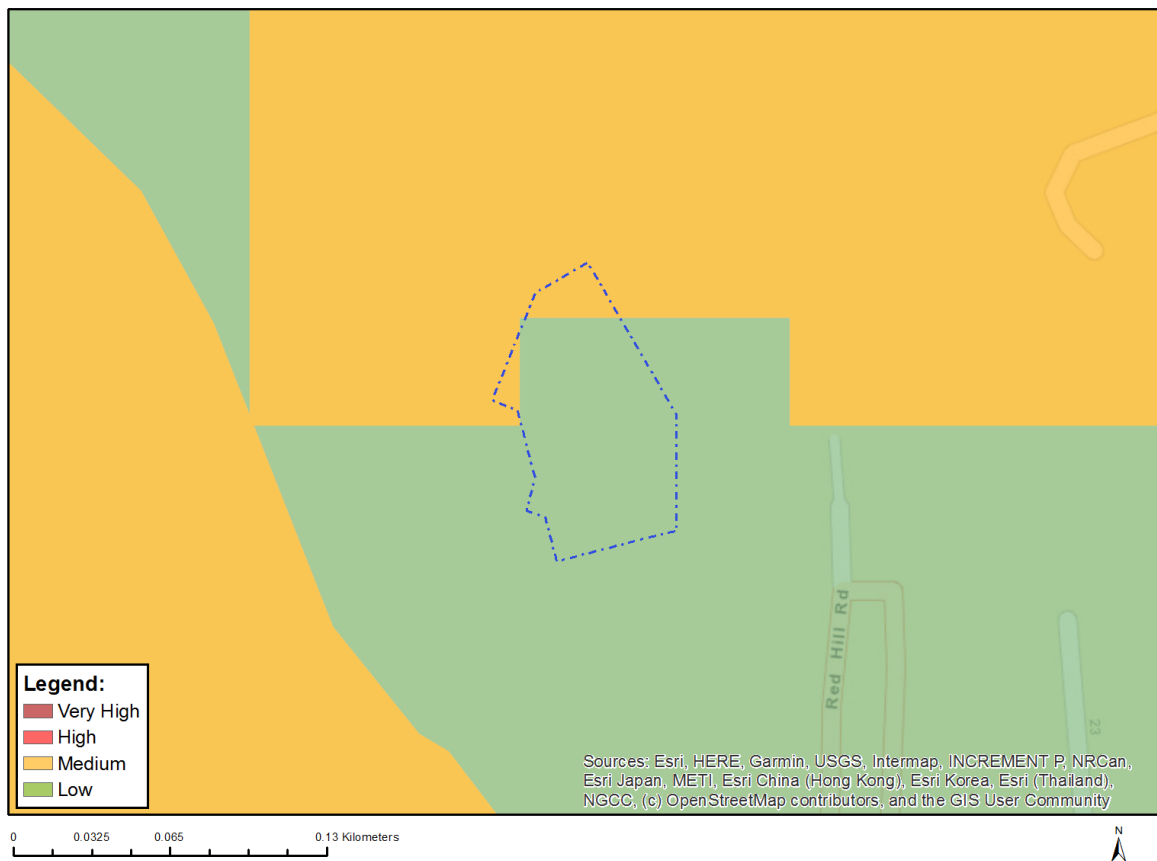


Very High sensitivity	High sensitivity	Medium sensitivity	Low sensitivity
			X

#### Sensitivity Features:

Sensitivity	Feature(s)
Low	Land capability;01. Very low/02. Very low/03. Low-Very low/04. Low-Very low/05. Low

## MAP OF RELATIVE ANIMAL SPECIES THEME SENSITIVITY



Where only a sensitive plant unique number or sensitive animal unique number is provided in the screening report and an assessment is required, the environmental assessment practitioner (EAP) or specialist is required to email SANBI at [eiadatarequests@sanbi.org.za](mailto:eiadatarequests@sanbi.org.za) listing all sensitive species with their unique identifiers for which information is required. The name has been withheld as the species may be prone to illegal harvesting and must be protected. SANBI will release the actual species name after the details of the EAP or specialist have been documented.

Very High sensitivity	High sensitivity	Medium sensitivity	Low sensitivity
		X	

### Sensitivity Features:

Sensitivity	Feature(s)
Low	Subject to confirmation
Medium	Aves-Circus ranivorus
Medium	Aves-Sarothrura affinis



# MAP OF RELATIVE AQUATIC BIODIVERSITY THEME SENSITIVITY

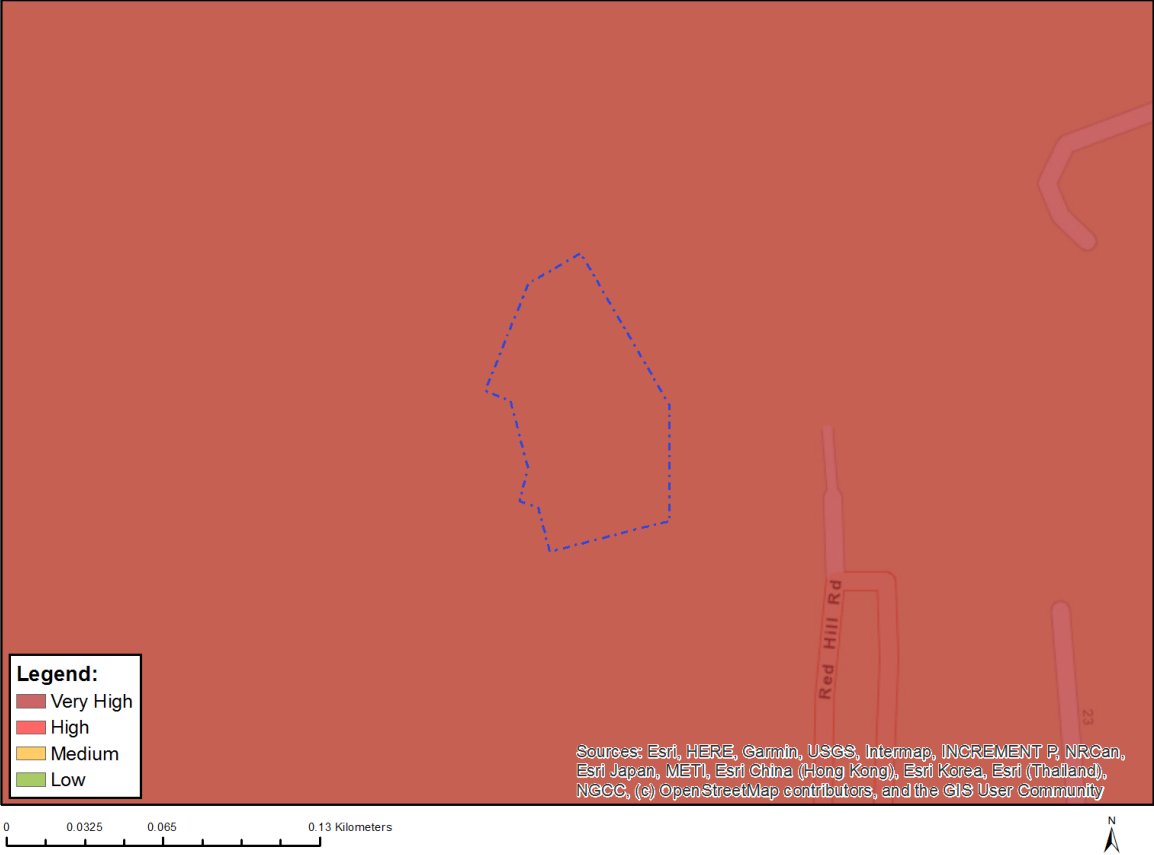


Very High sensitivity	High sensitivity	Medium sensitivity	Low sensitivity
X			

## Sensitivity Features:

Sensitivity	Feature(s)
Very High	SWSA (SW) _Table Mountain

# MAP OF RELATIVE ARCHAEOLOGICAL AND CULTURAL HERITAGE THEME SENSITIVITY



Very High sensitivity	High sensitivity	Medium sensitivity	Low sensitivity
X			

**Sensitivity Features:**

Sensitivity	Feature(s)
Very High	Within 2km of a Grade II Heritage site

## MAP OF RELATIVE CIVIL AVIATION THEME SENSITIVITY



Very High sensitivity	High sensitivity	Medium sensitivity	Low sensitivity
	X		

### Sensitivity Features:

Sensitivity	Feature(s)
High	Dangerous and restricted airspace as demarcated
Medium	Between 15 and 35 km from a civil aviation radar
Medium	Between 15 and 35 km from a major civil aviation aerodrome

# MAP OF RELATIVE DEFENCE THEME SENSITIVITY

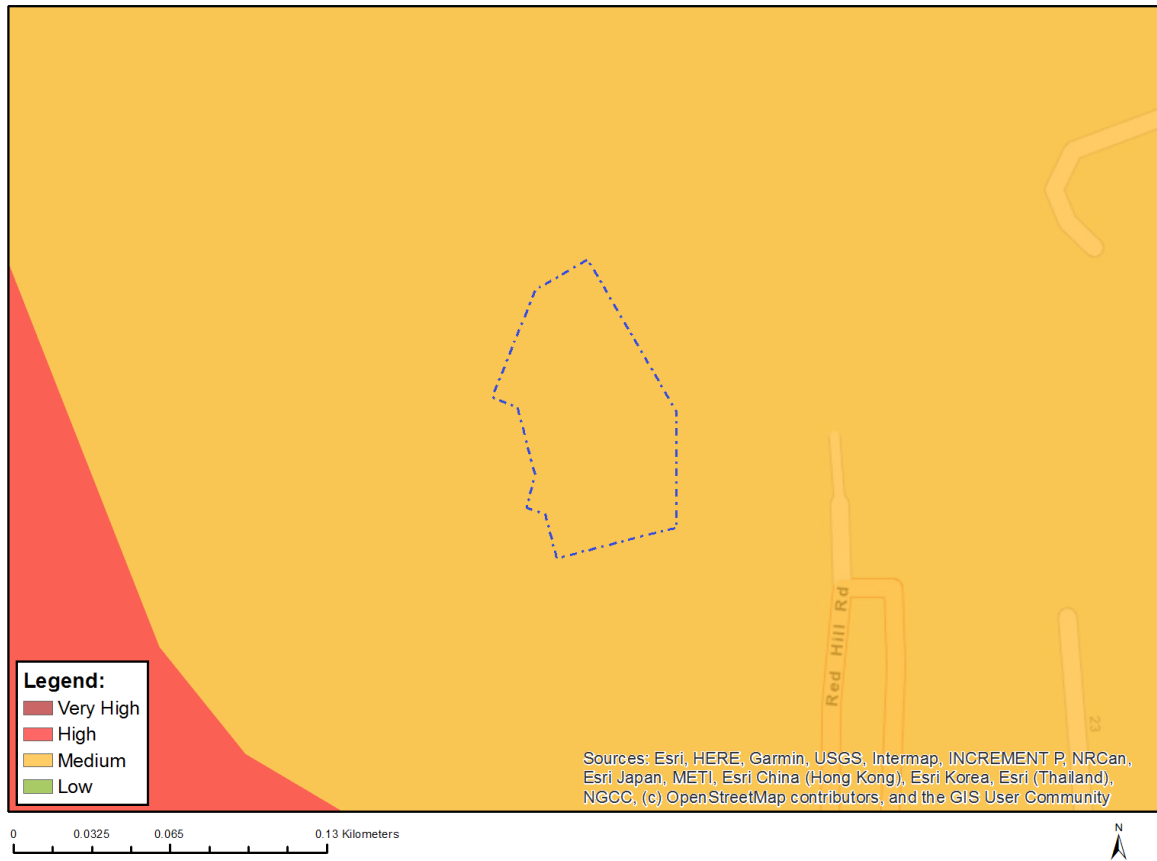


Very High sensitivity	High sensitivity	Medium sensitivity	Low sensitivity
X			

**Sensitivity Features:**

Sensitivity	Feature(s)
Very High	Military and Defence Site

## MAP OF RELATIVE PALEONTOLOGY THEME SENSITIVITY

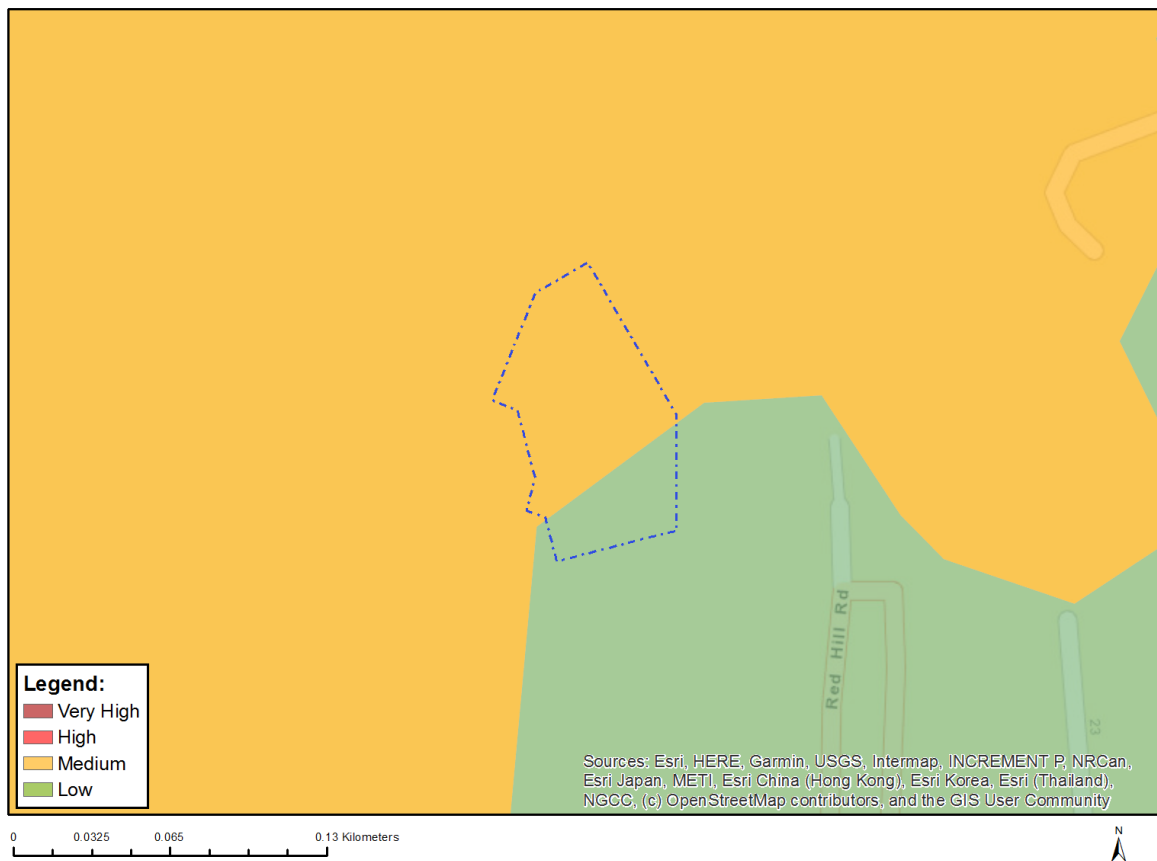


Very High sensitivity	High sensitivity	Medium sensitivity	Low sensitivity
		X	

### Sensitivity Features:

Sensitivity	Feature(s)
Medium	Features with a Medium paleontological sensitivity

## MAP OF RELATIVE PLANT SPECIES THEME SENSITIVITY



Where only a sensitive plant unique number or sensitive animal unique number is provided in the screening report and an assessment is required, the environmental assessment practitioner (EAP) or specialist is required to email SANBI at [eiadatarequests@sanbi.org.za](mailto:eiadatarequests@sanbi.org.za) listing all sensitive species with their unique identifiers for which information is required. The name has been withheld as the species may be prone to illegal harvesting and must be protected. SANBI will release the actual species name after the details of the EAP or specialist have been documented.

Very High sensitivity	High sensitivity	Medium sensitivity	Low sensitivity
		X	

### Sensitivity Features:

Sensitivity	Feature(s)
Low	Low Sensitivity
Medium	Lampranthus glomeratus
Medium	Lampranthus promontorii
Medium	Lampranthus stenus
Medium	Lampranthus tenuifolius
Medium	Erepsia forficata
Medium	Erepsia dunensis
Medium	Ruschia geminiflora
Medium	Ruschia promontorii
Medium	Ruschia rubricaulis
Medium	Liparia parva
Medium	Liparia splendens subsp. splendens
Medium	Indigofera candolleana

Medium	<i>Aspalathus capensis</i>
Medium	<i>Aspalathus capitata</i>
Medium	<i>Aspalathus chenopoda</i> subsp. <i>chenopoda</i>
Medium	<i>Aspalathus incurva</i>
Medium	<i>Aspalathus psoraleoides</i>
Medium	<i>Otholobium fruticans</i>
Medium	<i>Lebeckia meyeriana</i>
Medium	<i>Lebeckia plukenetiana</i>
Medium	Sensitive species 986
Medium	<i>Podalyria sericea</i>
Medium	<i>Audouinia capitata</i>
Medium	<i>Staavia dodii</i>
Medium	<i>Staavia glutinosa</i>
Medium	<i>Leucadendron coniferum</i>
Medium	<i>Leucadendron floridum</i>
Medium	<i>Leucadendron macowanii</i>
Medium	<i>Leucospermum hypophyllocarpodendron</i> subsp. <i>hypophyllocarpodendron</i>
Medium	<i>Mimetes fimbriifolius</i>
Medium	<i>Mimetes hirtus</i>
Medium	<i>Diastella divaricata</i> subsp. <i>divaricata</i>
Medium	<i>Serruria collina</i>
Medium	<i>Serruria cyanoides</i>
Medium	<i>Serruria decumbens</i>
Medium	<i>Serruria glomerata</i>
Medium	<i>Serruria inconspicua</i>
Medium	<i>Serruria villosa</i>
Medium	<i>Roella recurvata</i>
Medium	<i>Wahlenbergia pyrophila</i>
Medium	<i>Ehrharta setacea</i> subsp. <i>uniflora</i>
Medium	<i>Aristea zeyheri</i>
Medium	Sensitive species 533
Medium	<i>Geissorhiza bonaspei</i>
Medium	<i>Geissorhiza humilis</i>
Medium	Sensitive species 881
Medium	Sensitive species 775
Medium	<i>Bobartia gladiata</i> subsp. <i>major</i>
Medium	<i>Pseudalthenia aschersoniana</i>
Medium	<i>Erica amoena</i>
Medium	<i>Erica annectens</i>
Medium	<i>Erica brachialis</i>
Medium	<i>Erica capensis</i>
Medium	<i>Erica capillaris</i> var. <i>capillaris</i>
Medium	<i>Erica clavisepala</i>
Medium	<i>Erica eburnea</i>
Medium	<i>Erica fontana</i>
Medium	<i>Erica halicacaba</i>
Medium	<i>Erica marifolia</i>
Medium	<i>Erica nevillei</i>
Medium	<i>Erica patersonii</i>
Medium	<i>Erica pyxidiflora</i>
Medium	<i>Stylapterus fruticosus</i>
Medium	<i>Villarsia goldblattiana</i>
Medium	Sensitive species 493
Medium	<i>Adenogramma rigida</i>
Medium	<i>Wachendorfia brachyandra</i>
Medium	<i>Hessea cinnamomea</i>
Medium	Sensitive species 497
Medium	<i>Centella caespitosa</i>
Medium	<i>Isolepis venustula</i>
Medium	<i>Isolepis leucoloma</i>

Medium	<i>Ficinia anceps</i>
Medium	<i>Ficinia elatior</i>
Medium	<i>Ficinia pinguior</i>
Medium	<i>Elegia prominens</i>
Medium	<i>Anthochortus capensis</i>
Medium	<i>Restio dodii</i> var. <i>dodii</i>
Medium	Sensitive species 384
Medium	Sensitive species 460
Medium	Sensitive species 1139
Medium	<i>Acrolophia ustulata</i>
Medium	Sensitive species 373
Medium	<i>Pterygodium microglossum</i>
Medium	<i>Holothrix longicornu</i>
Medium	<i>Heliophila cinerea</i>
Medium	<i>Heliophila promontorii</i>
Medium	<i>Heliophila pusilla</i> var. <i>lanceolata</i>
Medium	<i>Heliophila tabularis</i>
Medium	<i>Gnidia humilis</i>
Medium	<i>Passerina paludosa</i>
Medium	<i>Syncarpha zeyheri</i>
Medium	<i>Senecio foeniculoides</i>
Medium	<i>Cotula eckloniana</i>
Medium	<i>Gerbera wrightii</i>
Medium	<i>Stoebe rosea</i>
Medium	<i>Cullumia squarrosa</i>
Medium	<i>Osmitopsis dentata</i>
Medium	<i>Agathosma corymbosa</i>
Medium	<i>Agathosma hookeri</i>
Medium	<i>Agathosma lanceolata</i>
Medium	<i>Adenandra villosa</i> subsp. <i>biseriata</i>
Medium	<i>Adenandra villosa</i> subsp. <i>sonderi</i>
Medium	<i>Macrostylis villosa</i> subsp. <i>villosa</i>
Medium	<i>Cliffortia carinata</i>
Medium	<i>Cliffortia ericifolia</i>
Medium	<i>Cliffortia hirta</i>
Medium	<i>Cliffortia longifolia</i>
Medium	<i>Muraltia acipetala</i>
Medium	<i>Muraltia brachypetala</i>
Medium	<i>Muraltia comptonii</i>
Medium	<i>Muraltia macropetala</i>
Medium	<i>Muraltia mitior</i>
Medium	<i>Cytinus capensis</i>
Medium	Sensitive species 850
Medium	Sensitive species 1030
Medium	<i>Wurmbea hiemalis</i>
Medium	<i>Phylica dioica</i>
Medium	<i>Aloiampelos commixta</i>
Medium	<i>Skiatophytum skiatophytoides</i>
Medium	<i>Xiphotheca reflexa</i>
Medium	<i>Protea scolymocephala</i>
Medium	Sensitive species 599
Medium	<i>Restio paludosus</i>
Medium	<i>Pachites bodkinii</i>
Medium	<i>Lachnaea grandiflora</i>



## MAP OF RELATIVE TERRESTRIAL BIODIVERSITY THEME SENSITIVITY



Very High sensitivity	High sensitivity	Medium sensitivity	Low sensitivity
X			

### Sensitivity Features:

Sensitivity	Feature(s)
Very High	Cape Floral Region Protected Areas
Very High	Table Mountain National Park
Very High	CBA 1: Terrestrial (see CT data)
Very High	SWSA (SW) _Table Mountain
Very High	SANParks (Buffer) _Table Mountain National Park
Very High	EN_Cape Flats Dune Strandveld