

**SCREENING REPORT FOR AN ENVIRONMENTAL AUTHORIZATION AS  
REQUIRED BY THE 2014 EIA REGULATIONS – PROPOSED SITE  
ENVIRONMENTAL SENSITIVITY**

**EIA Reference number:** -

**Project name:** Propsoed residential development

**Project title:** Portion 36 of 708 Franskraal

**Date screening report generated:** 21/09/2023 08:40:07

**Applicant:** -

**Compiler:** -

**Compiler signature:**  
.....

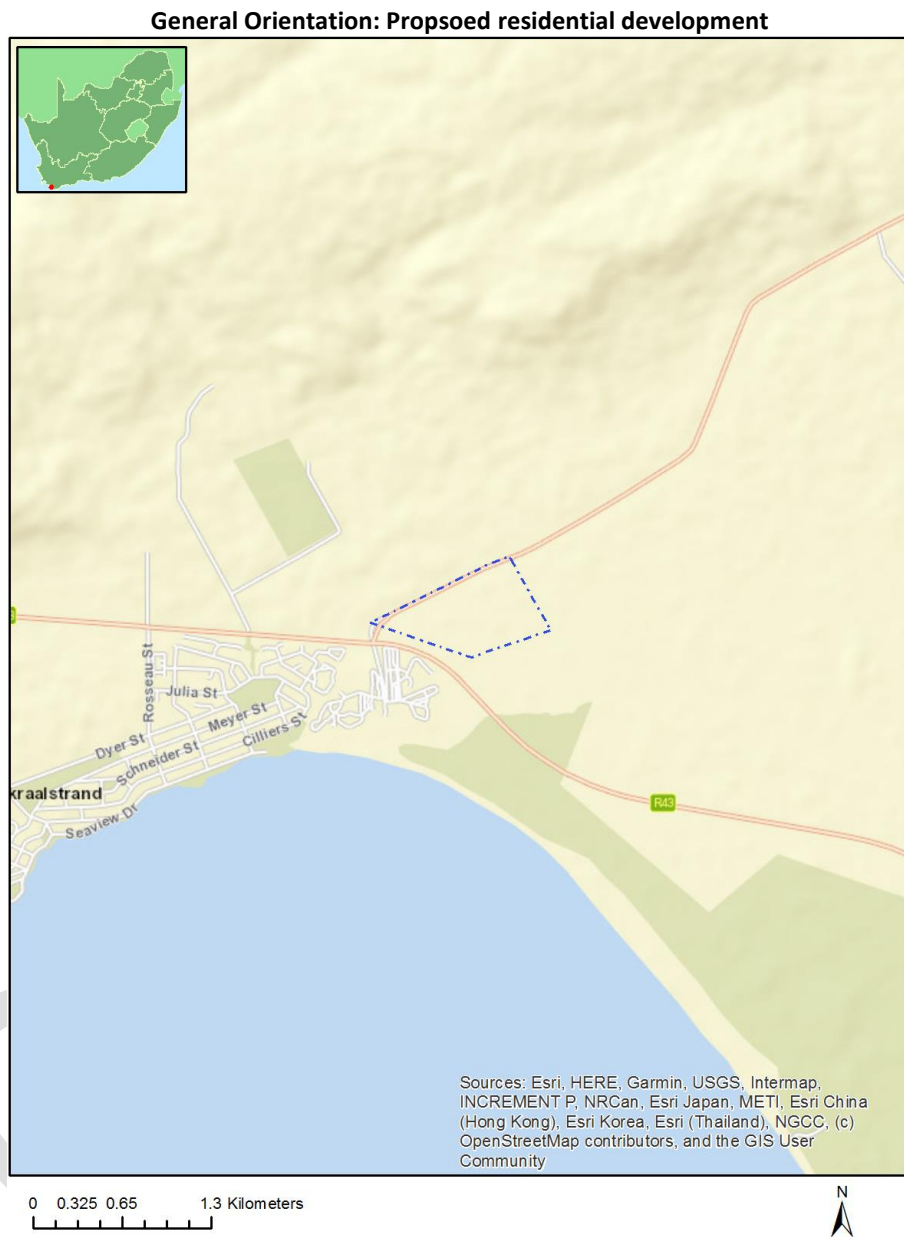
**Application Category:** Transformation of land | Indigenous vegetation

## Table of Contents

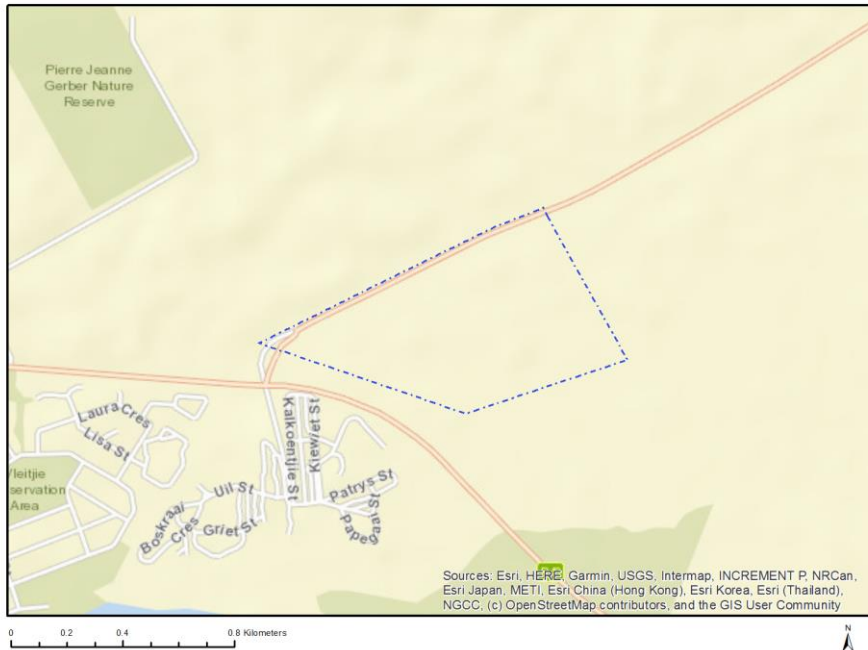
Proposed Project Location .....	3
Orientation map 1: General location .....	3
Map of proposed site and relevant area(s) .....	4
Cadastral details of the proposed site .....	4
Wind and Solar developments with an approved Environmental Authorisation or applications under consideration within 30 km of the proposed area .....	5
Environmental Management Frameworks relevant to the application .....	5
Environmental screening results and assessment outcomes .....	5
Relevant development incentives, restrictions, exclusions or prohibitions .....	5
Proposed Development Area Environmental Sensitivity .....	5
Specialist assessments identified .....	5
Results of the environmental sensitivity of the proposed area .....	7
MAP OF RELATIVE AGRICULTURE THEME SENSITIVITY .....	7
MAP OF RELATIVE ANIMAL SPECIES THEME SENSITIVITY .....	8
MAP OF RELATIVE AQUATIC BIODIVERSITY THEME SENSITIVITY .....	9
MAP OF RELATIVE ARCHAEOLOGICAL AND CULTURAL HERITAGE THEME SENSITIVITY .....	10
MAP OF RELATIVE CIVIL AVIATION THEME SENSITIVITY .....	11
MAP OF RELATIVE DEFENCE THEME SENSITIVITY .....	12
MAP OF RELATIVE PALEONTOLOGY THEME SENSITIVITY .....	13
MAP OF RELATIVE PLANT SPECIES THEME SENSITIVITY .....	14
MAP OF RELATIVE TERRESTRIAL BIODIVERSITY THEME SENSITIVITY .....	17

# Proposed Project Location

## Orientation map 1: General location



## Map of proposed site and relevant area(s)



## Cadastral details of the proposed site

Property details:

No	Farm Name	Farm/ Erf No	Portion	Latitude	Longitude	Property Type
1	FRANSCH KRAAL	708	0	34°36'12.29S	19°22'55.62E	Farm
2	FRANSCH KRAAL	708	36	34°35'57.33S	19°24'31.35E	Farm Portion
3	FRANSCH KRAAL	708	36	34°35'56.44S	19°24'54.48E	Farm Portion
4	FRANSCH KRAAL	708	36	34°35'44.92S	19°25'1.54E	Farm Portion
5	FRANSCH KRAAL	708	36	34°35'55.46S	19°24'54.24E	Farm Portion
6	FRANSCH KRAAL	708	165	34°35'49.78S	19°24'49.68E	Farm Portion

Development footprint<sup>1</sup> vertices:

No development footprint(s) specified.

<sup>1</sup> “development footprint”, means the area within the site on which the development will take place and includes all ancillary developments for example roads, power lines, boundary walls, paving etc. which require vegetation clearance or which will be disturbed and for which the application has been submitted.

## Wind and Solar developments with an approved Environmental Authorisation or applications under consideration within 30 km of the proposed area

No nearby wind or solar developments found.

## Environmental Management Frameworks relevant to the application

No intersections with EMF areas found.

## Environmental screening results and assessment outcomes

The following sections contain a summary of any development incentives, restrictions, exclusions or prohibitions that apply to the proposed development site as well as the most environmental sensitive features on the site based on the site sensitivity screening results for the application classification that was selected. The application classification selected for this report is:

**Transformation of land | Indigenous vegetation.**

### Relevant development incentives, restrictions, exclusions or prohibitions

The following development incentives, restrictions, exclusions or prohibitions and their implications that apply to this site are indicated below.

No intersection with any development zones found.

### Proposed Development Area Environmental Sensitivity

The following summary of the development site environmental sensitivities is identified. Only the highest environmental sensitivity is indicated. The footprint environmental sensitivities for the proposed development footprint as identified, are indicative only and must be verified on site by a suitably qualified person before the specialist assessments identified below can be confirmed.

Theme	Very High sensitivity	High sensitivity	Medium sensitivity	Low sensitivity
Agriculture Theme		X		
Animal Species Theme		X		
Aquatic Biodiversity Theme	X			
Archaeological and Cultural Heritage Theme				X
Civil Aviation Theme		X		
Defence Theme				X
Paleontology Theme	X			
Plant Species Theme			X	
Terrestrial Biodiversity Theme	X			

### Specialist assessments identified

Based on the selected classification, and the known impacts associated with the proposed development, the following list of specialist assessments have been identified for inclusion in the assessment report. It is the responsibility of the EAP to confirm this list and to motivate in the

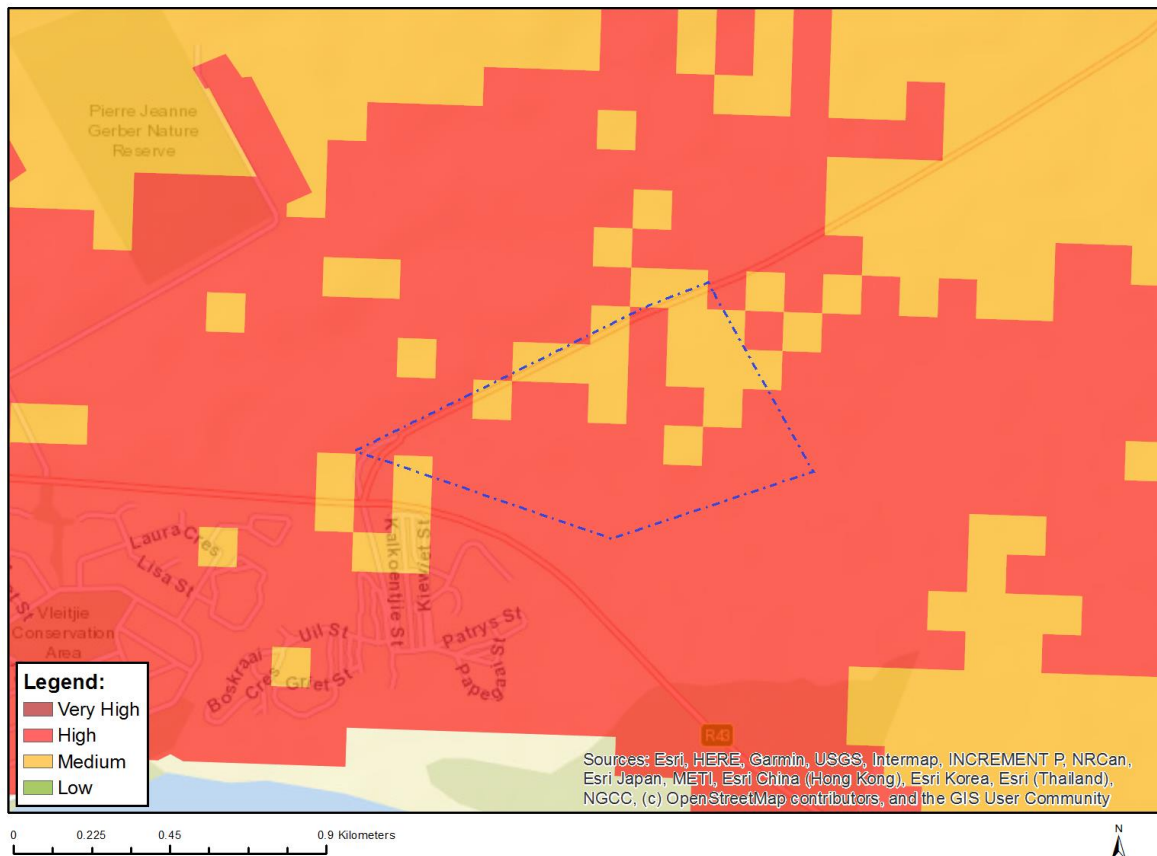
assessment report, the reason for not including any of the identified specialist study including the provision of photographic evidence of the site situation.

No	Specialist assessment	Assessment Protocol
1	Landscape/Visual Impact Assessment	<a href="https://screening.environment.gov.za/ScreeningDownloads/AssessmentProtocols/Gazetted%20General%20Requirement%20Assessment%20Protocols.pdf">https://screening.environment.gov.za/ScreeningDownloads/AssessmentProtocols/Gazetted General Requirement Assessment Protocols.pdf</a>
2	Archaeological and Cultural Heritage Impact Assessment	<a href="https://screening.environment.gov.za/ScreeningDownloads/AssessmentProtocols/Gazetted%20General%20Requirement%20Assessment%20Protocols.pdf">https://screening.environment.gov.za/ScreeningDownloads/AssessmentProtocols/Gazetted General Requirement Assessment Protocols.pdf</a>
3	Palaeontology Impact Assessment	<a href="https://screening.environment.gov.za/ScreeningDownloads/AssessmentProtocols/Gazetted%20General%20Requirement%20Assessment%20Protocols.pdf">https://screening.environment.gov.za/ScreeningDownloads/AssessmentProtocols/Gazetted General Requirement Assessment Protocols.pdf</a>
4	Terrestrial Biodiversity Impact Assessment	<a href="https://screening.environment.gov.za/ScreeningDownloads/AssessmentProtocols/Gazetted%20Terrestrial%20Biodiversity%20Assessment%20Protocols.pdf">https://screening.environment.gov.za/ScreeningDownloads/AssessmentProtocols/Gazetted Terrestrial Biodiversity Assessment Protocols.pdf</a>
5	Aquatic Biodiversity Impact Assessment	<a href="https://screening.environment.gov.za/ScreeningDownloads/AssessmentProtocols/Gazetted%20Aquatic%20Biodiversity%20Assessment%20Protocols.pdf">https://screening.environment.gov.za/ScreeningDownloads/AssessmentProtocols/Gazetted Aquatic Biodiversity Assessment Protocols.pdf</a>
6	Socio-Economic Assessment	<a href="https://screening.environment.gov.za/ScreeningDownloads/AssessmentProtocols/Gazetted%20General%20Requirement%20Assessment%20Protocols.pdf">https://screening.environment.gov.za/ScreeningDownloads/AssessmentProtocols/Gazetted General Requirement Assessment Protocols.pdf</a>
7	Plant Species Assessment	<a href="https://screening.environment.gov.za/ScreeningDownloads/AssessmentProtocols/Gazetted%20Plant%20Species%20Assessment%20Protocols.pdf">https://screening.environment.gov.za/ScreeningDownloads/AssessmentProtocols/Gazetted Plant Species Assessment Protocols.pdf</a>
8	Animal Species Assessment	<a href="https://screening.environment.gov.za/ScreeningDownloads/AssessmentProtocols/Gazetted%20Animal%20Species%20Assessment%20Protocols.pdf">https://screening.environment.gov.za/ScreeningDownloads/AssessmentProtocols/Gazetted Animal Species Assessment Protocols.pdf</a>

## Results of the environmental sensitivity of the proposed area.

The following section represents the results of the screening for environmental sensitivity of the proposed site for relevant environmental themes associated with the project classification. It is the duty of the EAP to ensure that the environmental themes provided by the screening tool are comprehensive and complete for the project. Refer to the disclaimer.

### MAP OF RELATIVE AGRICULTURE THEME SENSITIVITY

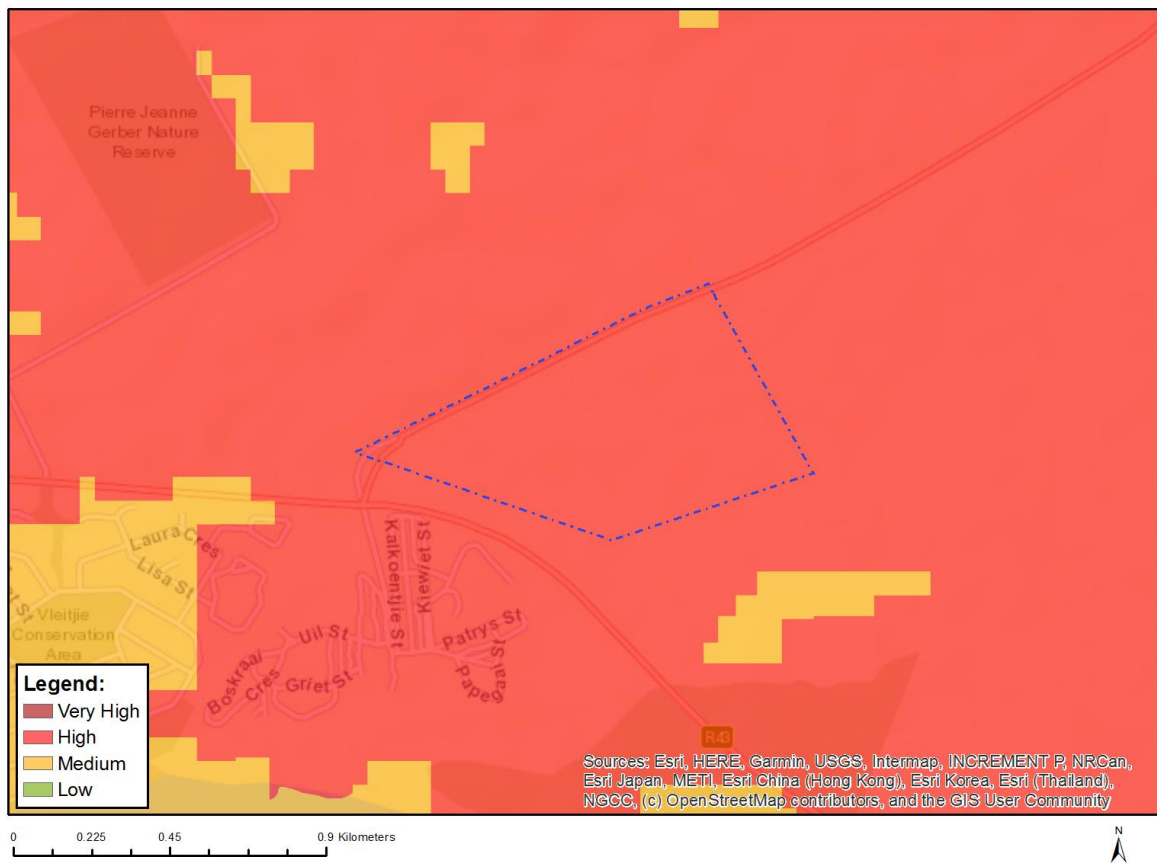


Very High sensitivity	High sensitivity	Medium sensitivity	Low sensitivity
	X		

#### Sensitivity Features:

Sensitivity	Feature(s)
High	Land capability;09. Moderate-High/10. Moderate-High
Medium	Land capability;06. Low-Moderate/07. Low-Moderate/08. Moderate

## MAP OF RELATIVE ANIMAL SPECIES THEME SENSITIVITY



Where only a sensitive plant unique number or sensitive animal unique number is provided in the screening report and an assessment is required, the environmental assessment practitioner (EAP) or specialist is required to email SANBI at [eiadatarequests@sanbi.org.za](mailto:eiadatarequests@sanbi.org.za) listing all sensitive species with their unique identifiers for which information is required. The name has been withheld as the species may be prone to illegal harvesting and must be protected. SANBI will release the actual species name after the details of the EAP or specialist have been documented.

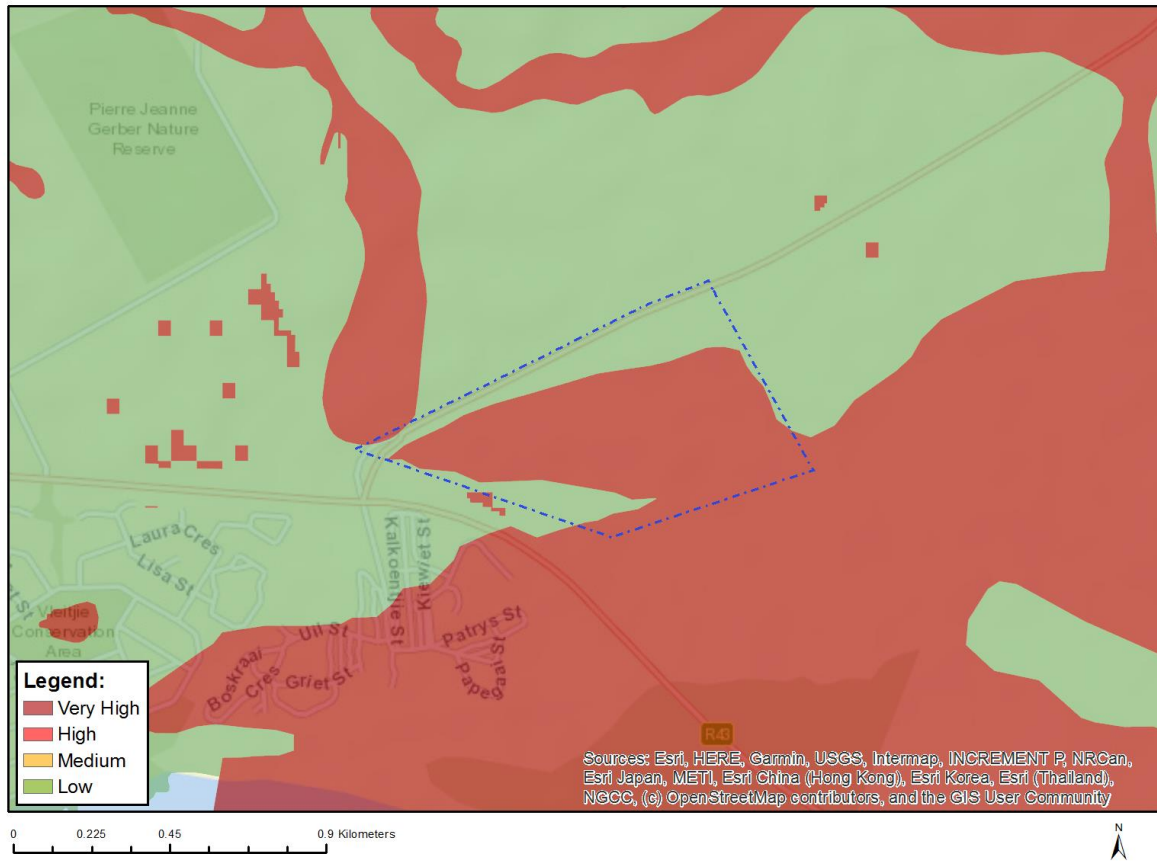
Very High sensitivity	High sensitivity	Medium sensitivity	Low sensitivity
	X		

### Sensitivity Features:

Sensitivity	Feature(s)
High	Aves-Circus maurus
High	Aves-Circus ranivorus
High	Aves-Hydroprogne caspia
High	Aves-Pelecanus onocrotalus
Medium	Aves-Afrotis afra
Medium	Aves-Sarothrura affinis
Medium	Aves-Neotis denhami
Medium	Aves-Turnix hottentottus
Medium	Reptilia-Bitis armata
Medium	Invertebrate-Brinckiella aptera
Medium	Invertebrate-Aneuryphymus montanus



## MAP OF RELATIVE AQUATIC BIODIVERSITY THEME SENSITIVITY



Very High sensitivity	High sensitivity	Medium sensitivity	Low sensitivity
X			

### Sensitivity Features:

Sensitivity	Feature(s)
Low	Low sensitivity
Very High	CBA 1: Aquatic
Very High	Estuary_Uilkraals
Very High	Wetlands_(Estuary)
Very High	Wetlands_South Coast Fynbos Bioregion (Floodplain)
Very High	Wetlands_South Coast Fynbos Bioregion (Valley-bottom)

# MAP OF RELATIVE ARCHAEOLOGICAL AND CULTURAL HERITAGE THEME SENSITIVITY

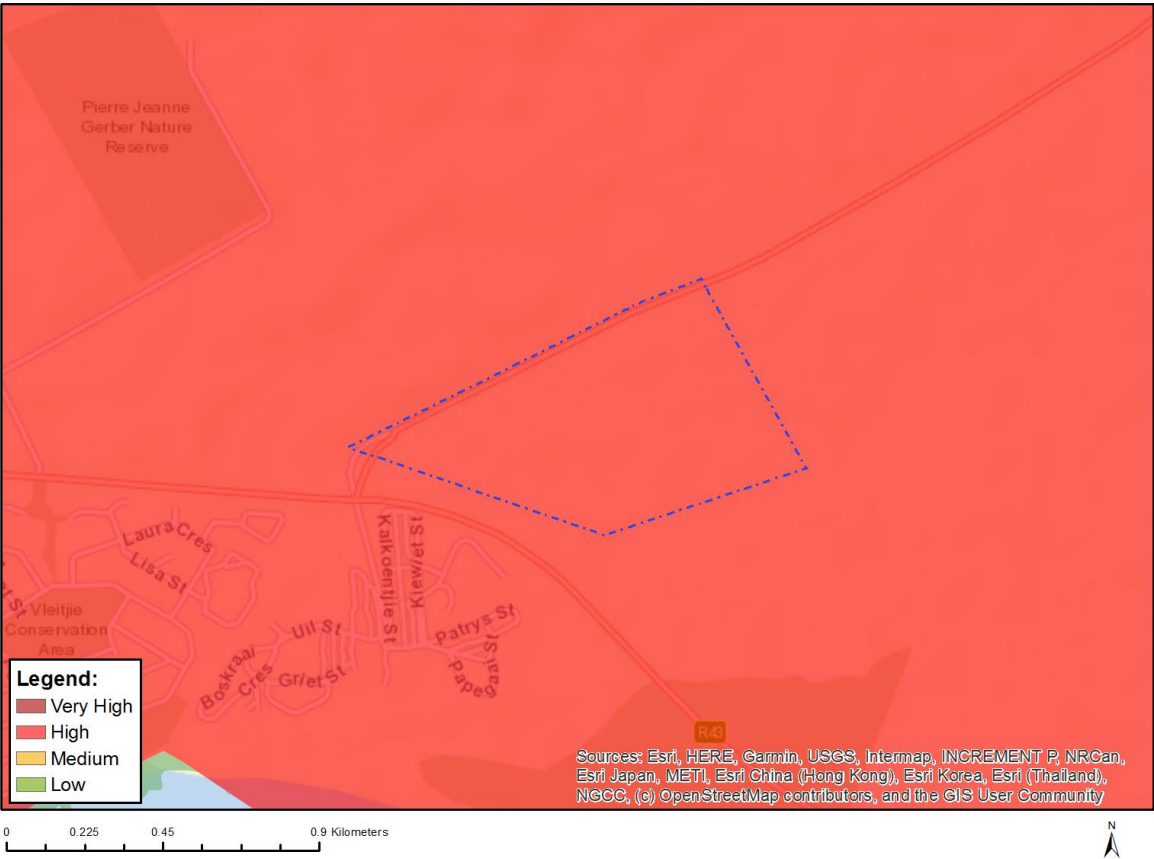


Very High sensitivity	High sensitivity	Medium sensitivity	Low sensitivity
			X

**Sensitivity Features:**

Sensitivity	Feature(s)
Low	Low sensitivity

# MAP OF RELATIVE CIVIL AVIATION THEME SENSITIVITY

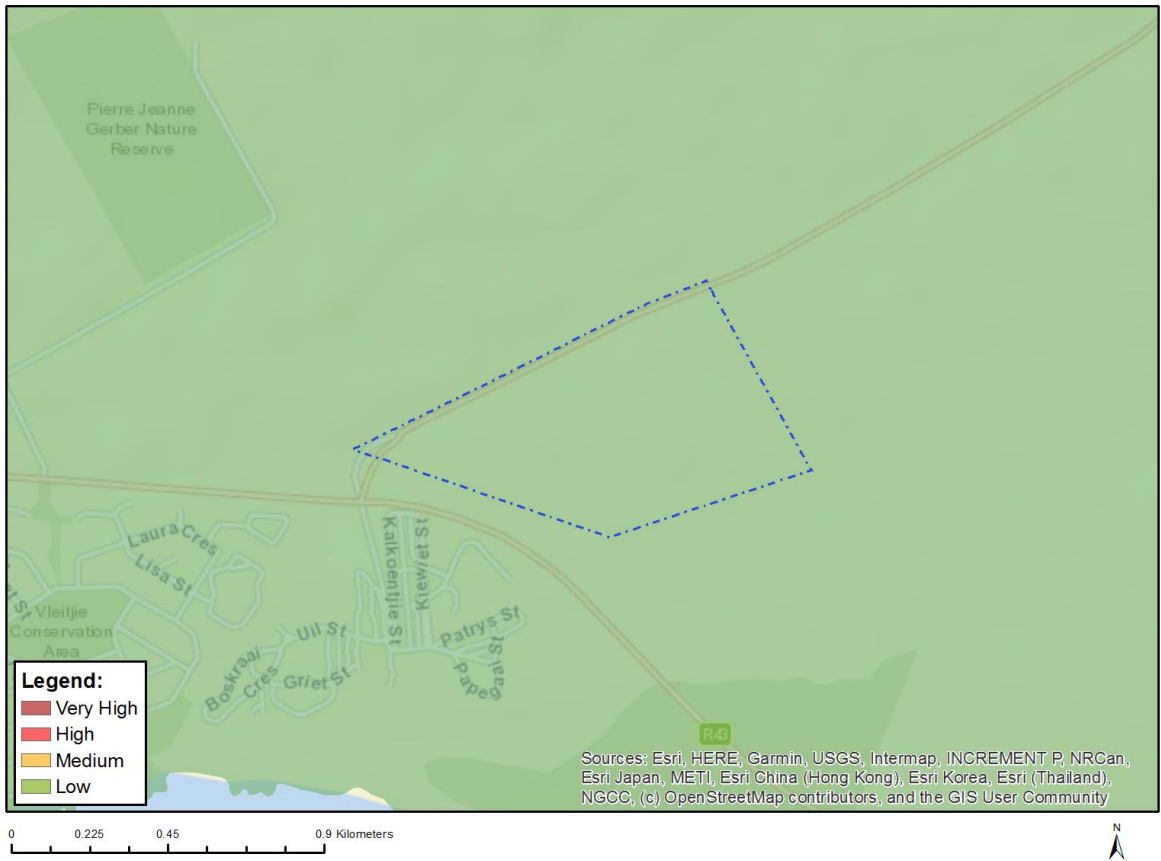


Very High sensitivity	High sensitivity	Medium sensitivity	Low sensitivity
	X		

**Sensitivity Features:**

Sensitivity	Feature(s)
High	Within 8 km of other civil aviation aerodrome
High	Dangerous and restricted airspace as demarcated

# MAP OF RELATIVE DEFENCE THEME SENSITIVITY

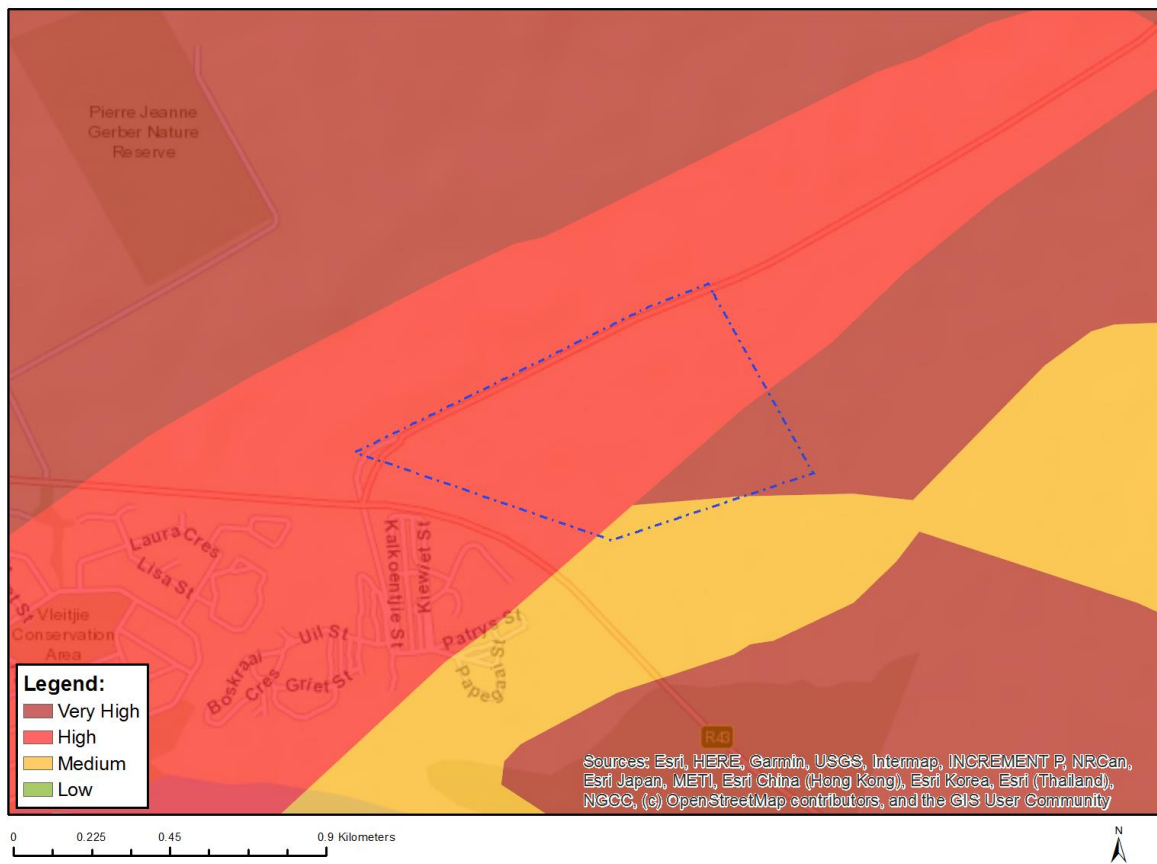


Very High sensitivity	High sensitivity	Medium sensitivity	Low sensitivity
			X

## Sensitivity Features:

Sensitivity	Feature(s)
Low	Low Sensitivity

## MAP OF RELATIVE PALEONTOLOGY THEME SENSITIVITY

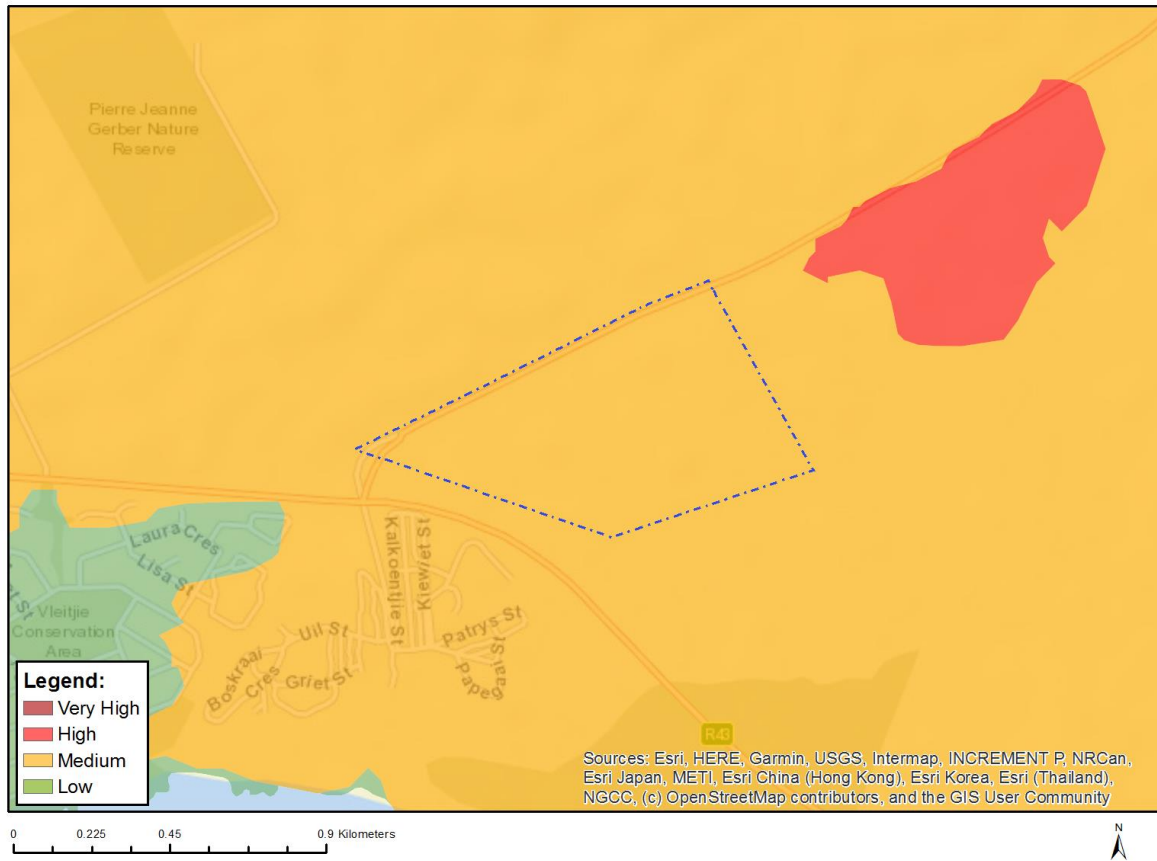


Very High sensitivity	High sensitivity	Medium sensitivity	Low sensitivity
X			

### Sensitivity Features:

Sensitivity	Feature(s)
High	Features with a High paleontological sensitivity
Medium	Features with a Medium paleontological sensitivity
Very High	Features with a Very High paleontological sensitivity

## MAP OF RELATIVE PLANT SPECIES THEME SENSITIVITY



Where only a sensitive plant unique number or sensitive animal unique number is provided in the screening report and an assessment is required, the environmental assessment practitioner (EAP) or specialist is required to email SANBI at [eiadatarequests@sanbi.org.za](mailto:eiadatarequests@sanbi.org.za) listing all sensitive species with their unique identifiers for which information is required. The name has been withheld as the species may be prone to illegal harvesting and must be protected. SANBI will release the actual species name after the details of the EAP or specialist have been documented.

Very High sensitivity	High sensitivity	Medium sensitivity	Low sensitivity
		X	

### Sensitivity Features:

Sensitivity	Feature(s)
Medium	Lampranthus caudatus
Medium	Lampranthus ceriseus
Medium	Lampranthus fergusoniae
Medium	Lampranthus leptaleon
Medium	Lampranthus stenus
Medium	Lampranthus tenuifolius
Medium	Disphyma dunsdonii
Medium	Erepsia dunensis
Medium	Amphithalea sericea
Medium	Amphithalea virgata
Medium	Liparia angustifolia
Medium	Aspalathus globulosa
Medium	Aspalathus oblongifolia

Medium	<i>Lebeckia gracilis</i>
Medium	<i>Colpoon speciosum</i>
Medium	<i>Leucadendron coniferum</i>
Medium	<i>Leucadendron elimense</i> subsp. <i>elimense</i>
Medium	<i>Leucadendron laxum</i>
Medium	<i>Leucadendron linifolium</i>
Medium	<i>Leucadendron modestum</i>
Medium	<i>Leucadendron platyspermum</i>
Medium	<i>Leucospermum hypophyllocarpodendron</i> subsp. <i>hypophyllocarpodendron</i>
Medium	<i>Leucospermum prostratum</i>
Medium	<i>Protea longifolia</i>
Medium	<i>Paranomus abrotanifolius</i>
Medium	<i>Mimetes hirtus</i>
Medium	<i>Spatalla ericoides</i>
Medium	<i>Roella arenaria</i>
Medium	<i>Manulea exigua</i>
Medium	<i>Selago diffusa</i>
Medium	<i>Pentameris pholiuroides</i>
Medium	<i>Lobostemon lucidus</i>
Medium	<i>Echiostachys ecklonianus</i>
Medium	Sensitive species 137
Medium	Sensitive species 247
Medium	<i>Erica aghillana</i> var. <i>aghillana</i>
Medium	<i>Erica irregularis</i>
Medium	<i>Erica melanacme</i>
Medium	<i>Erica riparia</i>
Medium	<i>Erica innovans</i>
Medium	<i>Tetragonia caesia</i>
Medium	Sensitive species 1250
Medium	Sensitive species 714
Medium	<i>Isolepis venustula</i>
Medium	<i>Thamnochortus dumosus</i>
Medium	<i>Thamnochortus pellucidus</i>
Medium	<i>Staberoha multispicula</i>
Medium	<i>Elegia fenestrata</i>
Medium	<i>Elegia prominens</i>
Medium	<i>Restio sabulosus</i>
Medium	<i>Restio anomalus</i>
Medium	<i>Restio papillosus</i>
Medium	Sensitive species 1139
Medium	<i>Acrolophia bolusii</i>
Medium	<i>Pterygodium cruciferum</i>
Medium	<i>Pterygodium bifidum</i>
Medium	<i>Pterygodium vermiferum</i>
Medium	<i>Heliophila linearis</i> var. <i>reticulata</i>
Medium	<i>Gnidia spicata</i>
Medium	<i>Gnidia ornata</i>
Medium	<i>Passerina paludosa</i>
Medium	<i>Poecilolepis maritima</i>
Medium	<i>Cotula eckloniana</i>
Medium	<i>Amellus asteroides</i> subsp. <i>mollis</i>
Medium	<i>Amellus capensis</i>
Medium	<i>Stoebe schultzii</i>
Medium	<i>Pteronia tenuifolia</i>
Medium	<i>Cullumia squarrosa</i>
Medium	<i>Diosma demissa</i>
Medium	<i>Diosma haelkraalensis</i>
Medium	<i>Diosma parvula</i>
Medium	<i>Diosma subulata</i>
Medium	<i>Zygophyllum fuscatum</i>

Medium	<i>Cliffortia ericifolia</i>
Medium	<i>Cliffortia longifolia</i>
Medium	<i>Cliffortia anthospermoides</i>
Medium	<i>Limonium anthericoides</i>
Medium	<i>Muraltia mitior</i>
Medium	Sensitive species 1151
Medium	Sensitive species 913
Medium	<i>Phylica amoena</i>
Medium	<i>Phylica brevifolia</i>
Medium	<i>Phylica floribunda</i>
Medium	<i>Phylica lucida</i>
Medium	<i>Orthochilus litoralis</i>
Medium	<i>Skiatophytum skiatophytoides</i>
Medium	<i>Lampranthus debilis</i>
Medium	<i>Xiphotheca reflexa</i>
Medium	<i>Aspalathus lebeckioides</i>
Medium	<i>Aspalathus tylodes</i>
Medium	<i>Protea aspera</i>
Medium	Sensitive species 593
Medium	Sensitive species 800
Medium	Sensitive species 599
Medium	<i>Elegia verreauxii</i>
Medium	<i>Restio paludosus</i>
Medium	<i>Restio rigoratus</i>
Medium	Sensitive species 500
Medium	Sensitive species 53
Medium	Sensitive species 654
Medium	<i>Lachnaea grandiflora</i>
Medium	<i>Zostera capensis</i>



## MAP OF RELATIVE TERRESTRIAL BIODIVERSITY THEME SENSITIVITY



Very High sensitivity	High sensitivity	Medium sensitivity	Low sensitivity
X			

### Sensitivity Features:

Sensitivity	Feature(s)
Very High	ESA 2: Restore from other land use
Very High	ESA 1
Very High	CBA 1: Terrestrial
Very High	SANParks (Buffer) Agulhas National Park
Very High	CR_Agulhas Sand Fynbos