

**SCREENING REPORT FOR AN ENVIRONMENTAL AUTHORIZATION AS
REQUIRED BY THE 2014 EIA REGULATIONS – PROPOSED SITE
ENVIRONMENTAL SENSITIVITY**

EIA Reference number: -

Project name: Rusty Gate

Project title: -

Date screening report generated: 24/04/2023 20:28:36

Applicant: -

Compiler: Michelle Naylor

Compiler signature:
.....

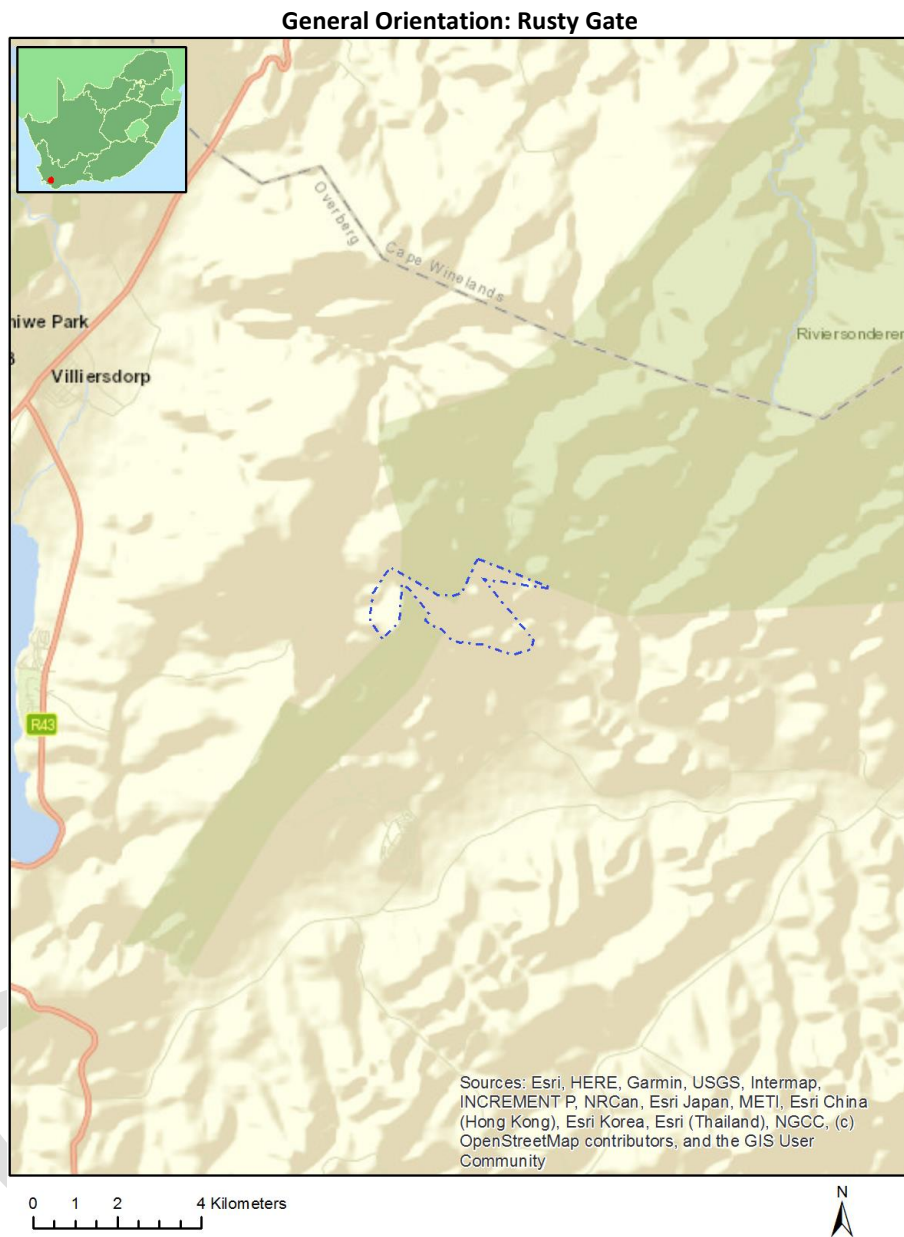
Application Category: Transformation of land | Indigenous vegetation

Table of Contents

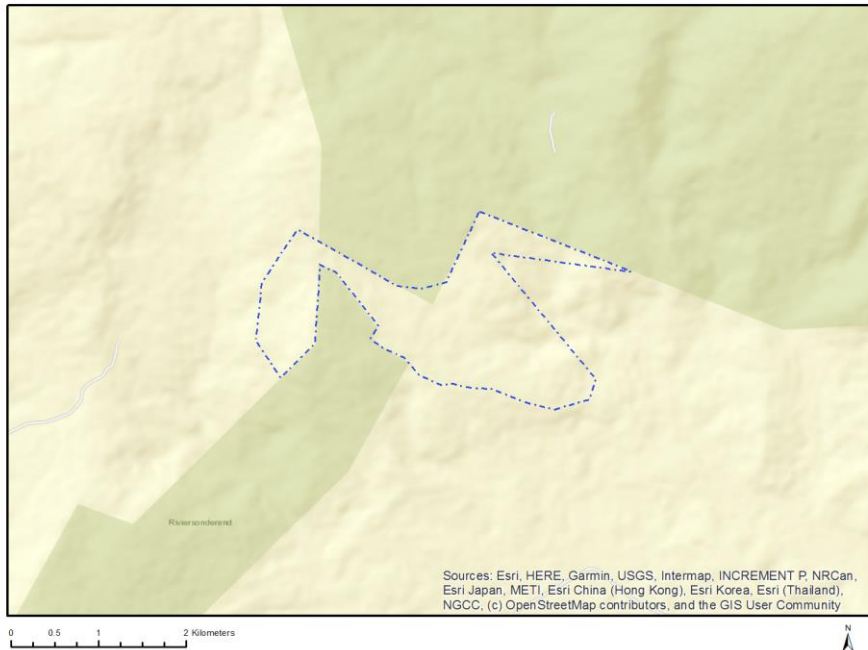
- Proposed Project Location 3
 - Orientation map 1: General location 3
- Map of proposed site and relevant area(s) 4
 - Cadastral details of the proposed site 4
 - Wind and Solar developments with an approved Environmental Authorisation or applications under consideration within 30 km of the proposed area 5
 - Environmental Management Frameworks relevant to the application 5
- Environmental screening results and assessment outcomes 5
 - Relevant development incentives, restrictions, exclusions or prohibitions 5
 - Proposed Development Area Environmental Sensitivity 5
 - Specialist assessments identified 6
- Results of the environmental sensitivity of the proposed area 7
 - MAP OF RELATIVE AGRICULTURE THEME SENSITIVITY 7
 - MAP OF RELATIVE ANIMAL SPECIES THEME SENSITIVITY 8
 - MAP OF RELATIVE AQUATIC BIODIVERSITY THEME SENSITIVITY 9
 - MAP OF RELATIVE ARCHAEOLOGICAL AND CULTURAL HERITAGE THEME SENSITIVITY 10
 - MAP OF RELATIVE CIVIL AVIATION THEME SENSITIVITY 11
 - MAP OF RELATIVE DEFENCE THEME SENSITIVITY 12
 - MAP OF RELATIVE PALEONTOLOGY THEME SENSITIVITY 13
 - MAP OF RELATIVE PLANT SPECIES THEME SENSITIVITY 14
 - MAP OF RELATIVE TERRESTRIAL BIODIVERSITY THEME SENSITIVITY 16

Proposed Project Location

Orientation map 1: General location



Map of proposed site and relevant area(s)



Cadastral details of the proposed site

Property details:

No	Farm Name	Farm/ Erf No	Portion	Latitude	Longitude	Property Type
1		780	0	34°2'15.69S	19°22'8.27E	Farm
2		780	0	34°0'36.04S	19°23'40.36E	Farm
3		824	0	34°1'56.28S	19°21'50.11E	Farm
4		826	0	34°2'6.99S	19°22'56.2E	Farm
5		900	0	34°2'19.25S	19°24'0.31E	Farm
6		825	0	34°1'28.44S	19°21'9.45E	Farm
7		833	0	34°3'8.55S	19°23'2.74E	Farm
8		887	0	34°1'35.87S	19°23'2.58E	Farm
9		901	0	34°2'40.8S	19°23'35.82E	Farm
10	ELANDS KLOOF	59	21	34°2'36.21S	19°23'14.73E	Farm Portion
11		887	0	34°1'36.89S	19°23'2.7E	Farm Portion
12	ELANDS KLOOF	59	18	34°3'3.33S	19°23'42.04E	Farm Portion
13	ELANDS KLOOF	59	13	34°2'41.73S	19°23'41.01E	Farm Portion
14	ELANDS KLOOF	59	19	34°1'38.93S	19°23'13.83E	Farm Portion
15		780	0	34°0'36.04S	19°23'40.36E	Farm Portion
16		901	0	34°2'41.51S	19°23'35.95E	Farm Portion
17		900	0	34°2'19.84S	19°24'0.29E	Farm Portion
18		780	0	34°2'15.69S	19°22'8.27E	Farm Portion
19		824	0	34°1'56.28S	19°21'50.11E	Farm Portion
20		825	0	34°1'28.43S	19°21'9.45E	Farm Portion
21		833	0	34°3'8.55S	19°23'2.74E	Farm Portion
22		826	0	34°2'7.48S	19°22'56.24E	Farm Portion
23		826	1	34°1'38.2S	19°22'53.91E	Farm Portion

Development footprint¹ vertices:
No development footprint(s) specified.

Wind and Solar developments with an approved Environmental Authorisation or applications under consideration within 30 km of the proposed area

No nearby wind or solar developments found.

Environmental Management Frameworks relevant to the application

No intersections with EMF areas found.

Environmental screening results and assessment outcomes

The following sections contain a summary of any development incentives, restrictions, exclusions or prohibitions that apply to the proposed development site as well as the most environmental sensitive features on the site based on the site sensitivity screening results for the application classification that was selected. The application classification selected for this report is:

Transformation of land | Indigenous vegetation.

Relevant development incentives, restrictions, exclusions or prohibitions

The following development incentives, restrictions, exclusions or prohibitions and their implications that apply to this site are indicated below.

Incentive, restriction or prohibition	Implication
Strategic Gas Pipeline Corridors-Phase 1a & 1b: Saldanha to Ankerlig and Saldanha to Mossel Bay	https://screening.environment.gov.za/ScreeningDownloads/DevelopmentZones/Combined_GAS.pdf
South African Protected Areas	https://screening.environment.gov.za/ScreeningDownloads/DevelopmentZones/SAPAD_OR_2022_Q3_Metadata.pdf

Proposed Development Area Environmental Sensitivity

The following summary of the development site environmental sensitivities is identified. Only the highest environmental sensitivity is indicated. The footprint environmental sensitivities for the proposed development footprint as identified, are indicative only and must be verified on site by a suitably qualified person before the specialist assessments identified below can be confirmed.

¹ “development footprint”, means the area within the site on which the development will take place and includes all ancillary developments for example roads, power lines, boundary walls, paving etc. which require vegetation clearance or which will be disturbed and for which the application has been submitted.

Theme	Very High sensitivity	High sensitivity	Medium sensitivity	Low sensitivity
Agriculture Theme			X	
Animal Species Theme		X		
Aquatic Biodiversity Theme	X			
Archaeological and Cultural Heritage Theme		X		
Civil Aviation Theme				X
Defence Theme				X
Paleontology Theme	X			
Plant Species Theme			X	
Terrestrial Biodiversity Theme	X			

Specialist assessments identified

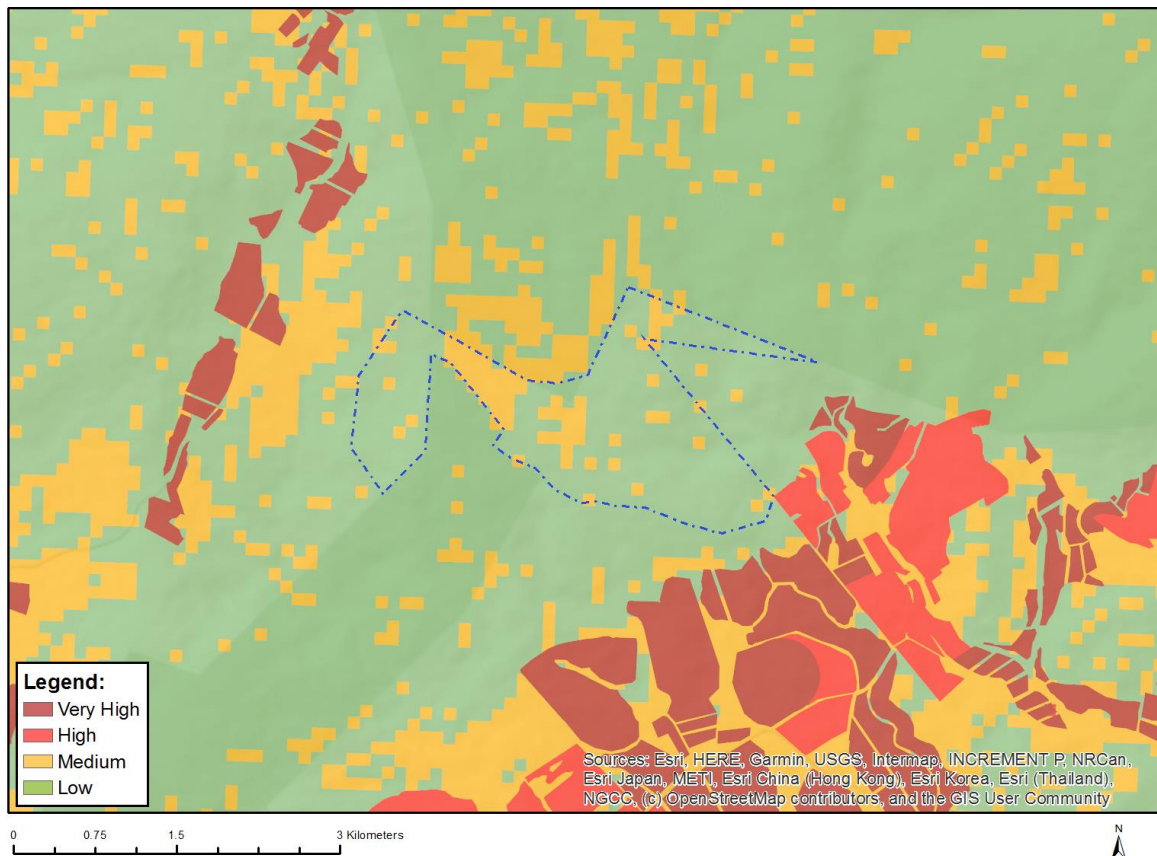
Based on the selected classification, and the known impacts associated with the proposed development, the following list of specialist assessments have been identified for inclusion in the assessment report. It is the responsibility of the EAP to confirm this list and to motivate in the assessment report, the reason for not including any of the identified specialist study including the provision of photographic evidence of the site situation.

No	Specialist assessment	Assessment Protocol
1	Landscape/Visual Impact Assessment	https://screening.environment.gov.za/ScreeningDownloads/AssessmentProtocols/Gazetted_General_Requirement_Assessment_Protocols.pdf
2	Archaeological and Cultural Heritage Impact Assessment	https://screening.environment.gov.za/ScreeningDownloads/AssessmentProtocols/Gazetted_General_Requirement_Assessment_Protocols.pdf
3	Palaeontology Impact Assessment	https://screening.environment.gov.za/ScreeningDownloads/AssessmentProtocols/Gazetted_General_Requirement_Assessment_Protocols.pdf
4	Terrestrial Biodiversity Impact Assessment	https://screening.environment.gov.za/ScreeningDownloads/AssessmentProtocols/Gazetted_Terrestrial_Biodiversity_Assessment_Protocols.pdf
5	Aquatic Biodiversity Impact Assessment	https://screening.environment.gov.za/ScreeningDownloads/AssessmentProtocols/Gazetted_Aquatic_Biodiversity_Assessment_Protocols.pdf
6	Socio-Economic Assessment	https://screening.environment.gov.za/ScreeningDownloads/AssessmentProtocols/Gazetted_General_Requirement_Assessment_Protocols.pdf
7	Plant Species Assessment	https://screening.environment.gov.za/ScreeningDownloads/AssessmentProtocols/Gazetted_Plant_Species_Assessment_Protocols.pdf
8	Animal Species Assessment	https://screening.environment.gov.za/ScreeningDownloads/AssessmentProtocols/Gazetted_Animal_Species_Assessment_Protocols.pdf

Results of the environmental sensitivity of the proposed area.

The following section represents the results of the screening for environmental sensitivity of the proposed site for relevant environmental themes associated with the project classification. It is the duty of the EAP to ensure that the environmental themes provided by the screening tool are comprehensive and complete for the project. Refer to the disclaimer.

MAP OF RELATIVE AGRICULTURE THEME SENSITIVITY

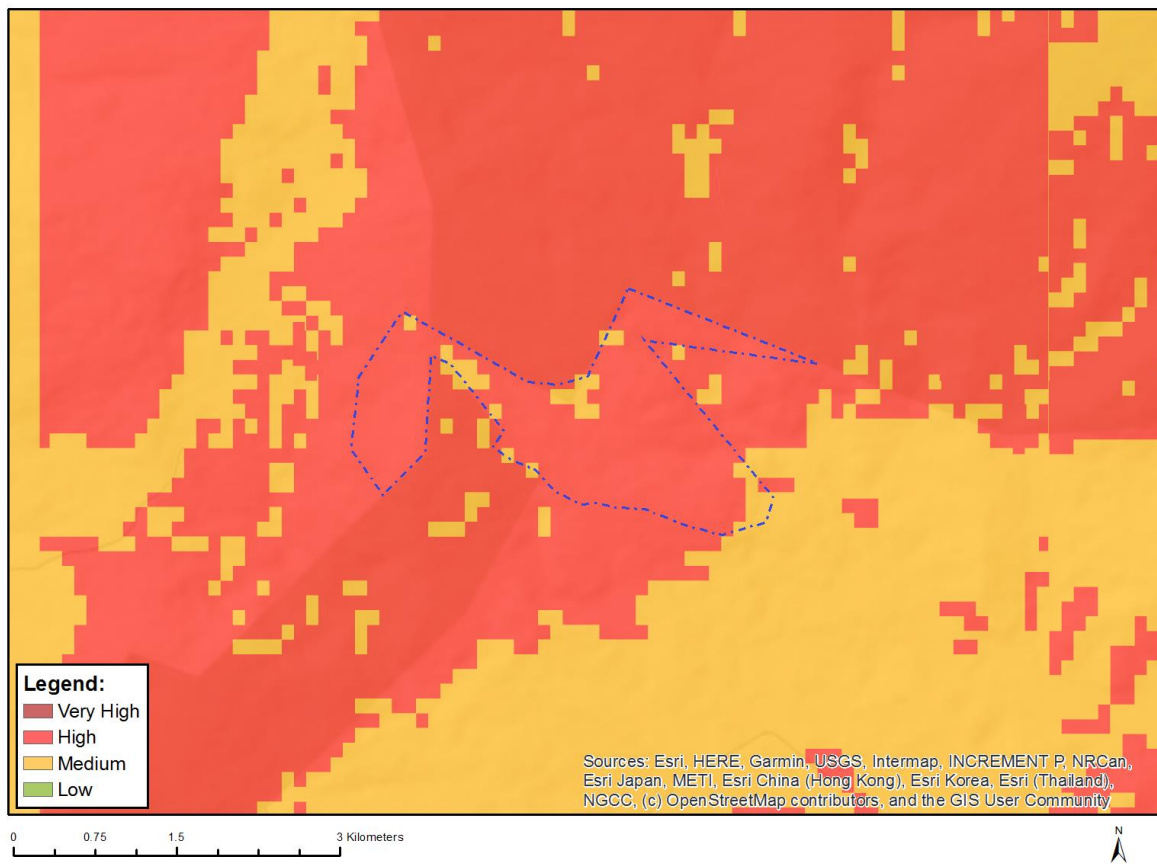


Very High sensitivity	High sensitivity	Medium sensitivity	Low sensitivity
		X	

Sensitivity Features:

Sensitivity	Feature(s)
Low	Land capability;01. Very low/02. Very low/03. Low-Very low/04. Low-Very low/05. Low
Medium	Land capability;06. Low-Moderate/07. Low-Moderate/08. Moderate

MAP OF RELATIVE ANIMAL SPECIES THEME SENSITIVITY



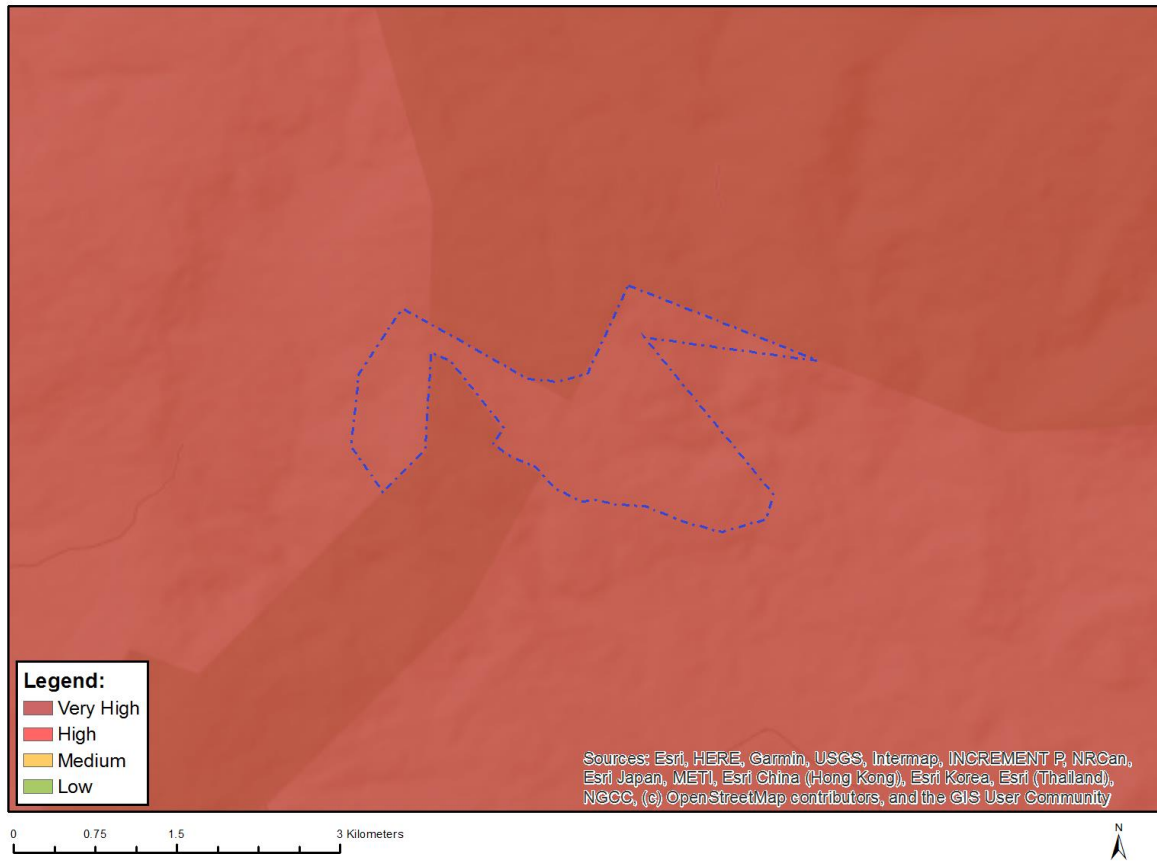
Where only a sensitive plant unique number or sensitive animal unique number is provided in the screening report and an assessment is required, the environmental assessment practitioner (EAP) or specialist is required to email SANBI at eiadatarequests@sanbi.org.za listing all sensitive species with their unique identifiers for which information is required. The name has been withheld as the species may be prone to illegal harvesting and must be protected. SANBI will release the actual species name after the details of the EAP or specialist have been documented.

Very High sensitivity	High sensitivity	Medium sensitivity	Low sensitivity
	X		

Sensitivity Features:

Sensitivity	Feature(s)
High	Aves-Sarothrura affinis
Medium	Aves-Circus maurus
Medium	Aves-Sagittarius serpentarius
Medium	Aves-Aquila verreauxii
Medium	Invertebrate-Conocephalus peringueyi
Medium	Invertebrate-Brinckiella aptera
Medium	Invertebrate-Aneuryphymus montanus

MAP OF RELATIVE AQUATIC BIODIVERSITY THEME SENSITIVITY

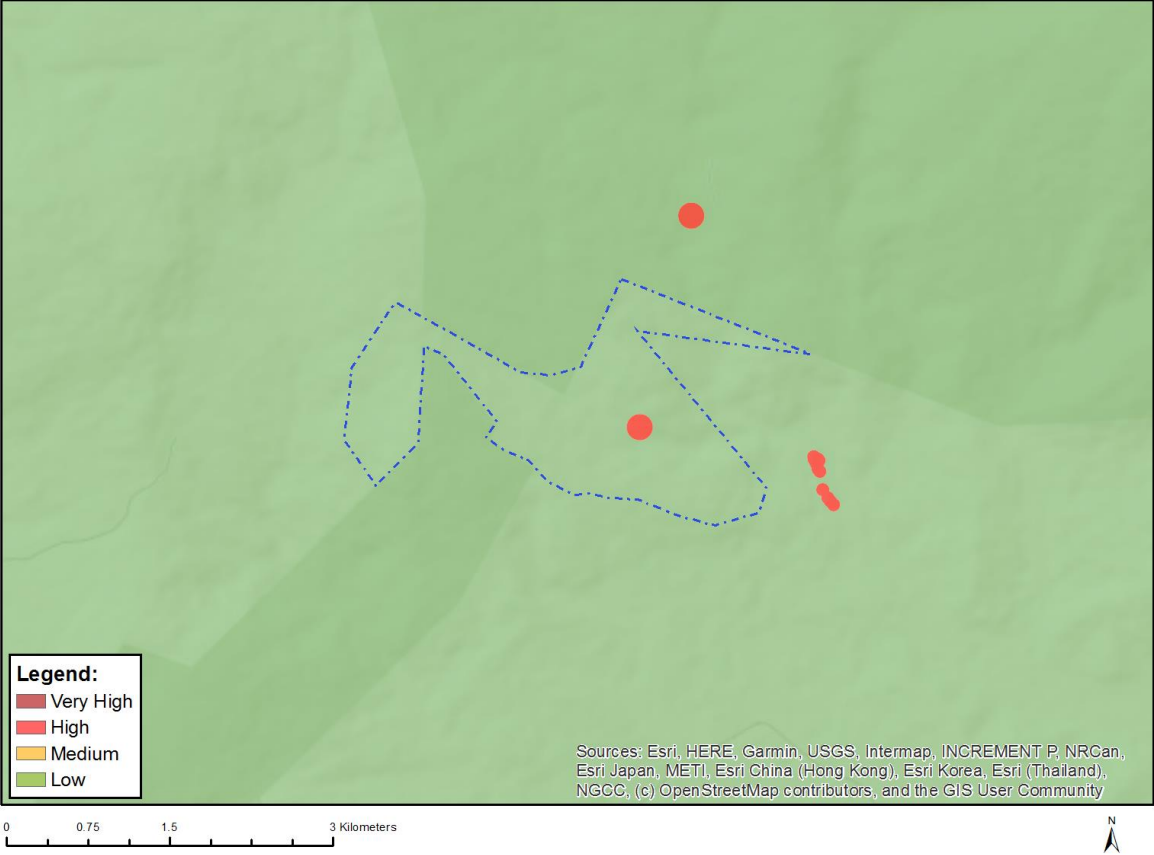


Very High sensitivity	High sensitivity	Medium sensitivity	Low sensitivity
X			

Sensitivity Features:

Sensitivity	Feature(s)
Very High	Aquatic CBAs
Very High	Strategic water source area
Very High	Wetlands and Estuaries

MAP OF RELATIVE ARCHAEOLOGICAL AND CULTURAL HERITAGE THEME SENSITIVITY

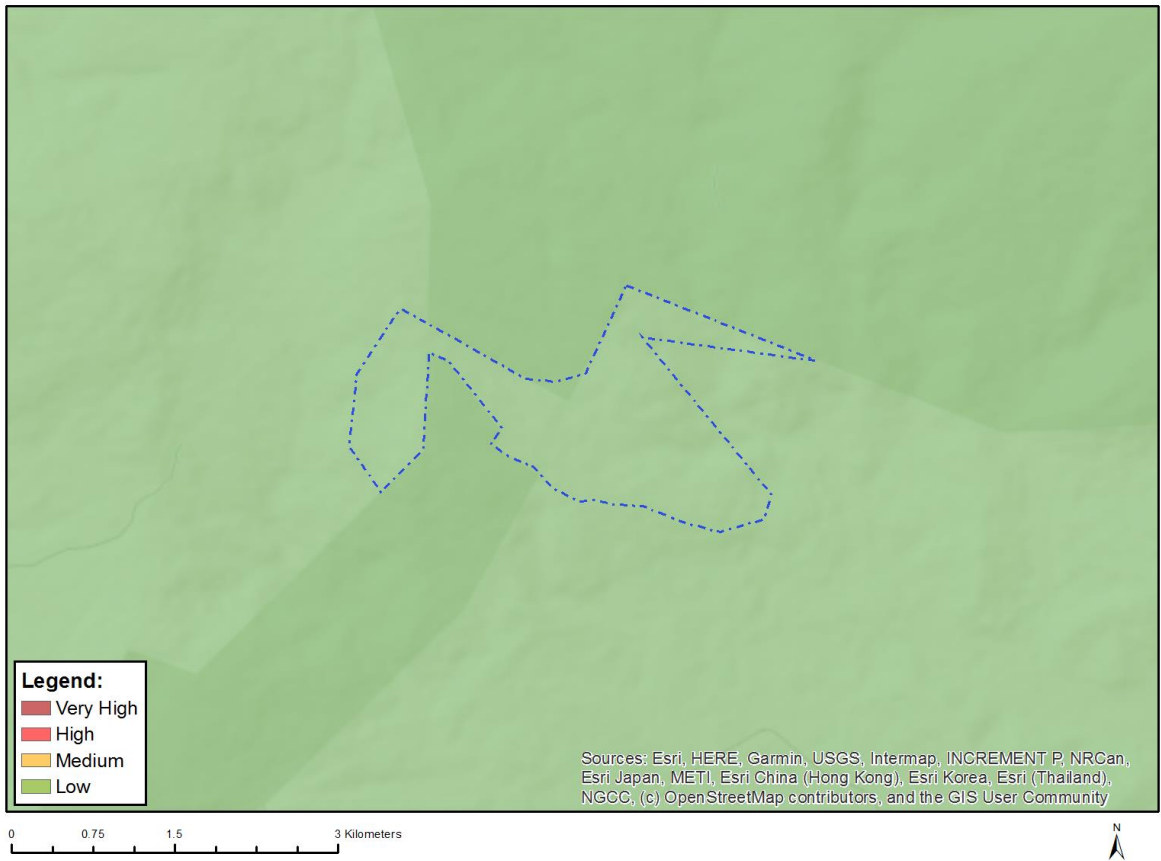


Very High sensitivity	High sensitivity	Medium sensitivity	Low sensitivity
	X		

Sensitivity Features:

Sensitivity	Feature(s)
High	Within 100m of a Grade IIIb Heritage site
Low	Low sensitivity

MAP OF RELATIVE CIVIL AVIATION THEME SENSITIVITY

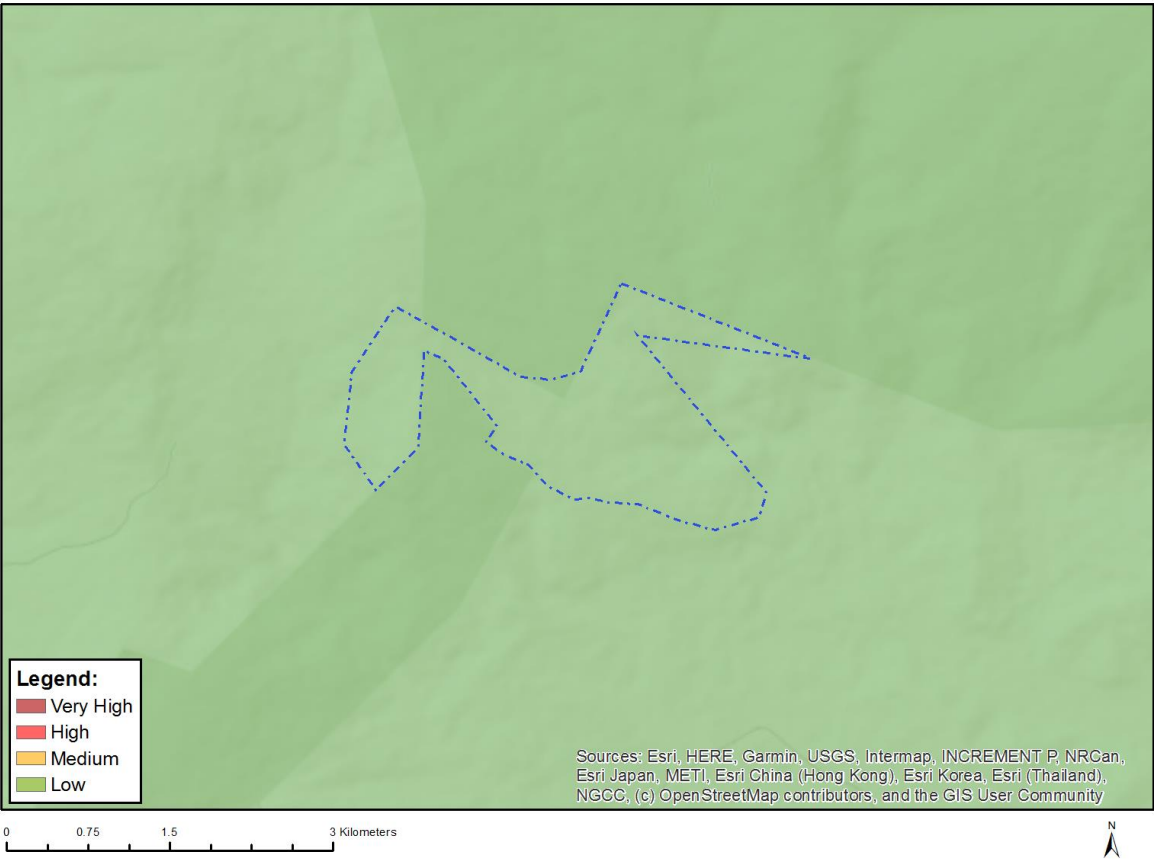


Very High sensitivity	High sensitivity	Medium sensitivity	Low sensitivity
			X

Sensitivity Features:

Sensitivity	Feature(s)
Low	Low sensitivity

MAP OF RELATIVE DEFENCE THEME SENSITIVITY

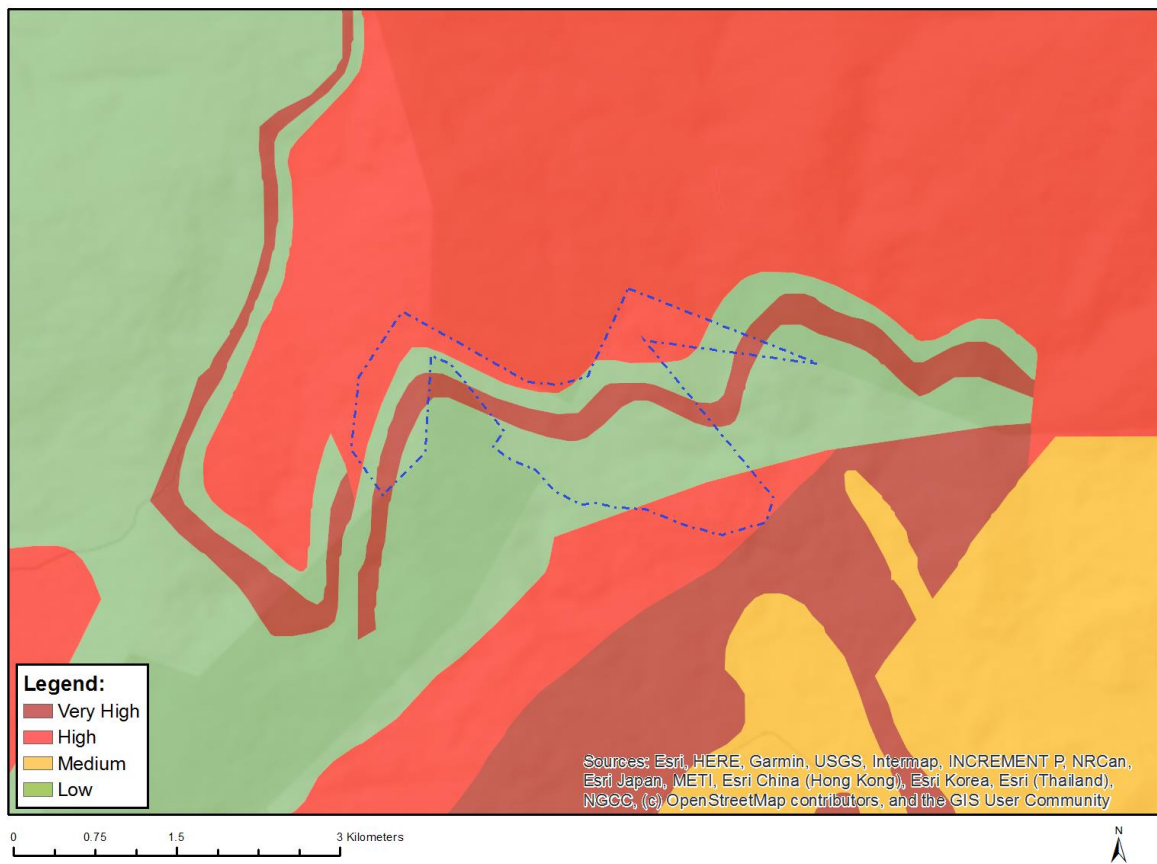


Very High sensitivity	High sensitivity	Medium sensitivity	Low sensitivity
			X

Sensitivity Features:

Sensitivity	Feature(s)
Low	Low Sensitivity

MAP OF RELATIVE PALEONTOLOGY THEME SENSITIVITY

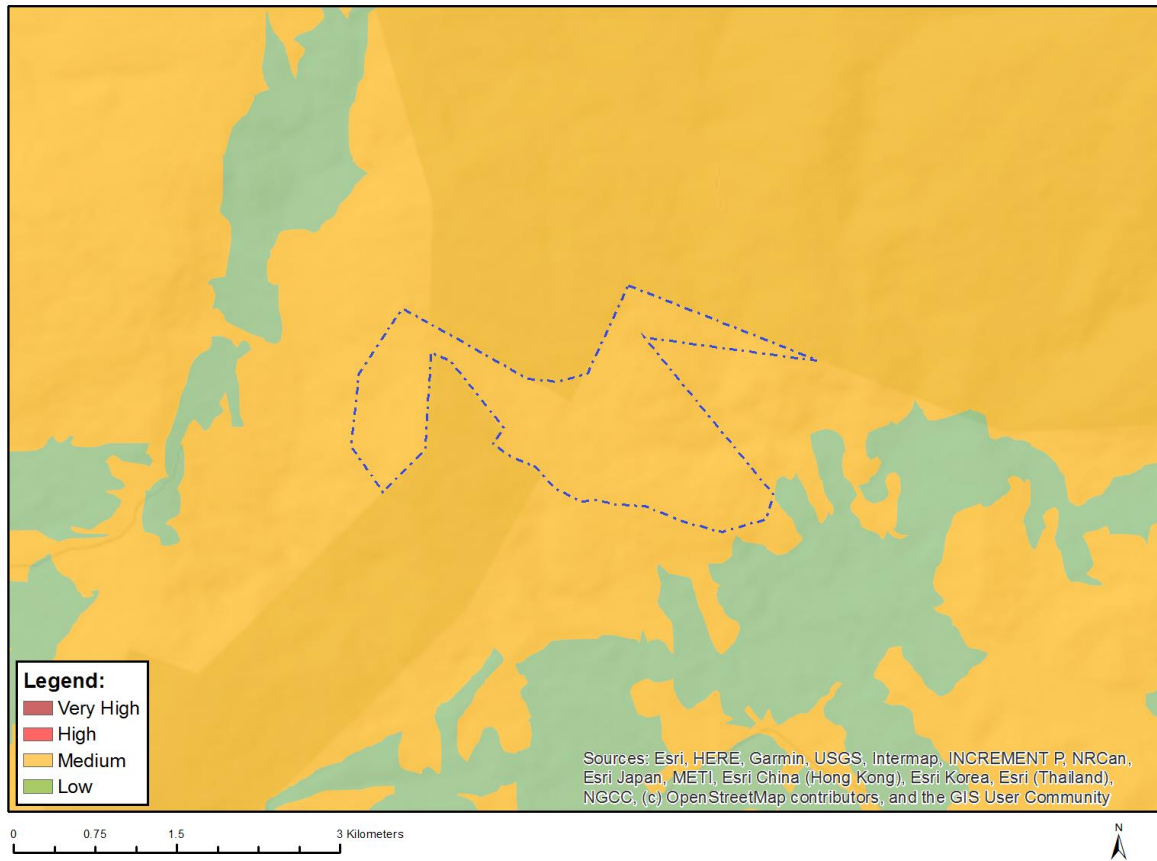


Very High sensitivity	High sensitivity	Medium sensitivity	Low sensitivity
X			

Sensitivity Features:

Sensitivity	Feature(s)
High	Features with a High paleontological sensitivity
Low	Features with a Low paleontological sensitivity
Very High	Features with a Very High paleontological sensitivity

MAP OF RELATIVE PLANT SPECIES THEME SENSITIVITY



Where only a sensitive plant unique number or sensitive animal unique number is provided in the screening report and an assessment is required, the environmental assessment practitioner (EAP) or specialist is required to email SANBI at eiadatarequests@sanbi.org.za listing all sensitive species with their unique identifiers for which information is required. The name has been withheld as the species may be prone to illegal harvesting and must be protected. SANBI will release the actual species name after the details of the EAP or specialist have been documented.

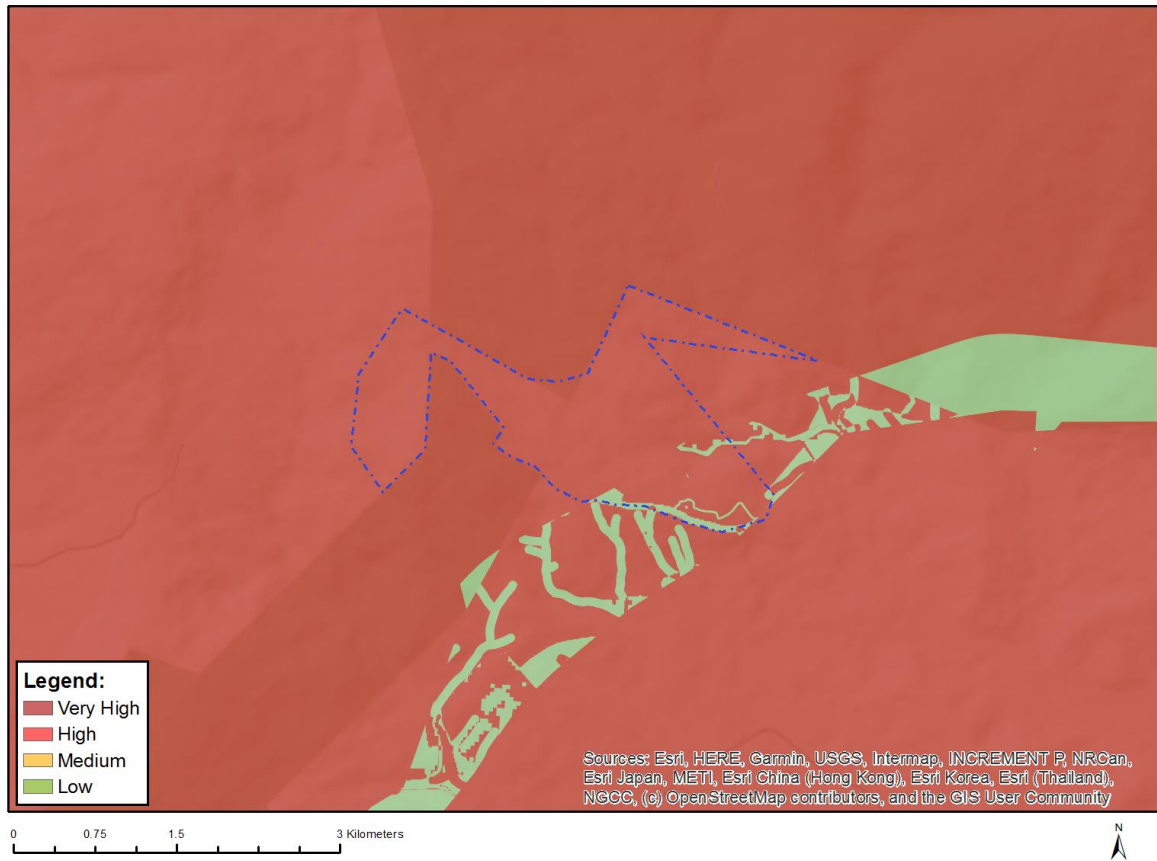
Very High sensitivity	High sensitivity	Medium sensitivity	Low sensitivity
		X	

Sensitivity Features:

Sensitivity	Feature(s)
Medium	Lampranthus spiniformis
Medium	Lampranthus stenopetalus
Medium	Acrodon subulatus
Medium	Erepsia oxysepala
Medium	Ruschia schollii
Medium	Drosanthemum flavum
Medium	Amphithalea ericifolia subsp. scoparia
Medium	Amphithalea bowiei
Medium	Liparia capitata
Medium	Aspalathus rosea
Medium	Otholobium rotundifolium
Medium	Lotononis villosa
Medium	Sorocephalus alopecurus

Medium	<i>Leucadendron platyspermum</i>
Medium	<i>Leucospermum formosum</i>
Medium	<i>Protea burchellii</i>
Medium	<i>Protea caespitosa</i>
Medium	<i>Protea lacticolor</i>
Medium	<i>Protea longifolia</i>
Medium	<i>Protea restionifolia</i>
Medium	<i>Paranomus adiantifolius</i>
Medium	<i>Mimetes argenteus</i>
Medium	<i>Spatalla propinqua</i>
Medium	<i>Serruria inconspicua</i>
Medium	<i>Serruria stellata</i>
Medium	<i>Serruria zeyheri</i>
Medium	<i>Prismatocarpus implicatus</i>
Medium	<i>Echiostachys ecklonianus</i>
Medium	<i>Echiostachys incanus</i>
Medium	<i>Aristea recisa</i>
Medium	<i>Tritoniopsis elongata</i>
Medium	Sensitive species 56
Medium	<i>Sparaxis fragrans</i>
Medium	<i>Sparaxis grandiflora</i> subsp. <i>violacea</i>
Medium	<i>Ixia longituba</i> subsp. <i>macrosiphon</i>
Medium	Sensitive species 1253
Medium	Sensitive species 499
Medium	Sensitive species 650
Medium	Sensitive species 1013
Medium	<i>Oxalis duriuscula</i>
Medium	<i>Erica floccifera</i>
Medium	<i>Erica xanthina</i>
Medium	Sensitive species 756
Medium	Sensitive species 105
Medium	<i>Hypodiscus squamosus</i>
Medium	<i>Restio pumilis</i>
Medium	<i>Cephalaria scabra</i>
Medium	Sensitive species 1277
Medium	<i>Lepidium pinnatum</i>
Medium	<i>Passerina burchellii</i>
Medium	<i>Lachnaea rupestris</i>
Medium	<i>Metalasia plicata</i>
Medium	<i>Polyarrhena reflexa</i> subsp. <i>brachyphylla</i>
Medium	<i>Polyarrhena prostrata</i>
Medium	<i>Zyrphelis nervosa</i>
Medium	<i>Anaxeton brevipes</i>
Medium	<i>Anaxeton hirsutum</i>
Medium	<i>Athanasia scabra</i>
Medium	<i>Helichrysum rotundatum</i>
Medium	<i>Osmitopsis nana</i>
Medium	<i>Euchaetis schlechteri</i>
Medium	<i>Cliffortia scandens</i>
Medium	<i>Muraltia tenuifolia</i>
Medium	<i>Notobubon pungens</i>
Medium	<i>Xiphotheca reflexa</i>
Medium	<i>Paranomus bolusii</i>
Medium	Sensitive species 335
Medium	Sensitive species 521
Medium	<i>Elegia squamosa</i>
Medium	Sensitive species 728
Medium	<i>Pachites bodkinii</i>

MAP OF RELATIVE TERRESTRIAL BIODIVERSITY THEME SENSITIVITY



Very High sensitivity	High sensitivity	Medium sensitivity	Low sensitivity
X			

Sensitivity Features:

Sensitivity	Feature(s)
Low	Low Sensitivity
Very High	Critical biodiversity area 1
Very High	Critical biodiversity area 2
Very High	Ecological support area 1
Very High	Ecological support area 2
Very High	Strategic Water Source Areas
Very High	Critically endangered ecosystem
Very High	Riviersonderend Mountain Catchment Area