



LORNAY
ENVIRONMENTAL CONSULTING

Photo Report

Portion 7 of the Farm 116, Bredasdorp

Farm 326, Bredasdorp

Consultant:

Michelle Naylor | Env. Consultant | M.Sc., Pr. Sci. Nat., EAPSA
cell: 083 245 6556 | tel: 028 316 1769 | fax: 086 585 2461 | michelle@lornay.co.za | www.lornay.co.za
PO Box 1990, Hermanus, 7200
Lornay Environmental Consulting Pty Ltd | Reg 2015/445417/07



View of the subject property, foreground vegetation indicates the type and state of vegetation typically found in the areas that were cleared. The patch of vegetation in background, is typically what the small patches of cleared areas would have looked like prior to clearance. These patches left between fields have limited biophysical value and are a nuisance to farm operations.



Typical area that would have been cleared. Long since been disturbed by farming practices over the years.

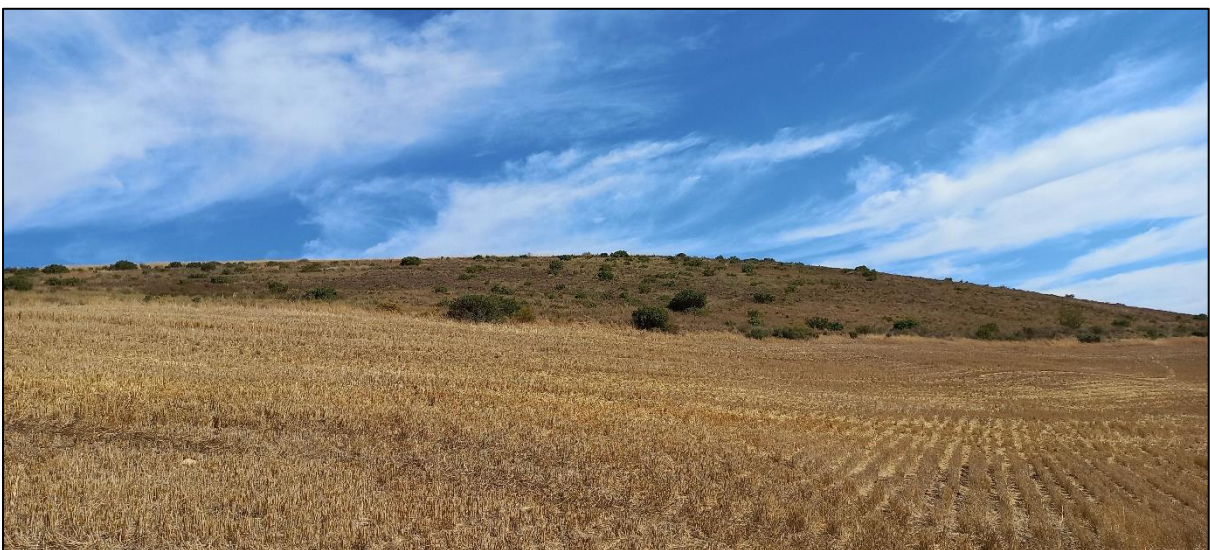


Typical area that would have been cleared. Long since been disturbed by farming practices over the years.









The photos above show various areas across the subject farms. The photos also show the state of the fringe pockets of vegetation and indicate that these small pockets are highly disturbed and do not represent the typical Central Ruens Shale Renosterveld. The intact and remaining larger pockets on the site, in particular Farm 326, have not been disturbed and serve as habitat amongst the cultivated areas.