

**SCREENING REPORT FOR AN ENVIRONMENTAL AUTHORIZATION AS  
REQUIRED BY THE 2014 EIA REGULATIONS – PROPOSED SITE  
ENVIRONMENTAL SENSITIVITY**

**EIA Reference number:** Pending

**Project name:** Establishment of vineyards

**Project title:** Ploughing

**Date screening report generated:** 12/05/2022 09:55:26

**Applicant:** Moutain Rose

**Compiler:** Lornay Env Consulting

**Compiler signature:**

.....

**Application Category:** Transformation of land | Indigenous vegetation

## Table of Contents

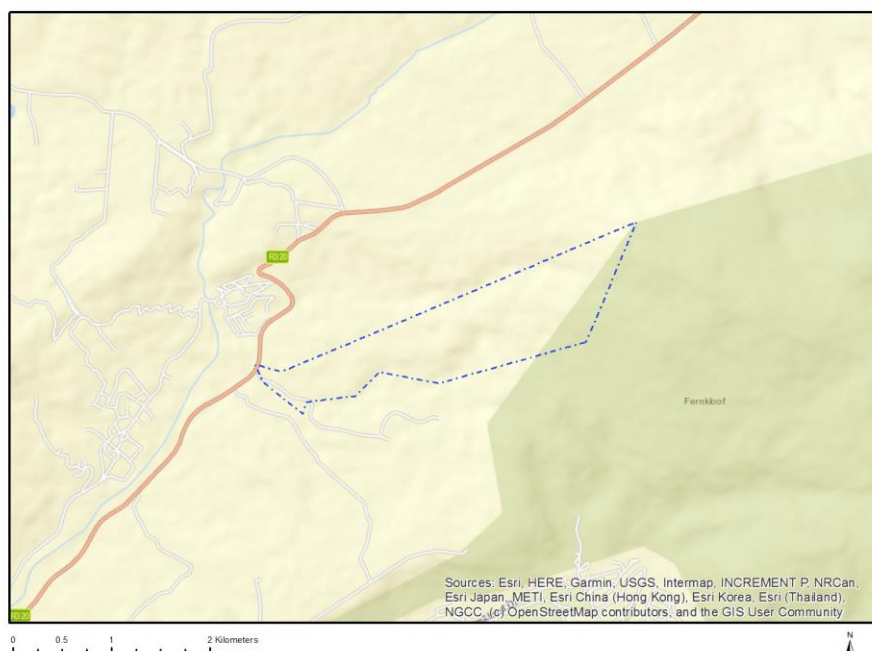
Proposed Project Location .....	3
Orientation map 1: General location .....	3
Map of proposed site and relevant area(s) .....	4
Cadastral details of the proposed site .....	4
Wind and Solar developments with an approved Environmental Authorisation or applications under consideration within 30 km of the proposed area .....	4
Environmental Management Frameworks relevant to the application .....	4
Environmental screening results and assessment outcomes .....	5
Relevant development incentives, restrictions, exclusions or prohibitions .....	5
Map indicating proposed development footprint within applicable development incentive, restriction, exclusion or prohibition zones .....	6
Proposed Development Area Environmental Sensitivity .....	6
Specialist assessments identified .....	7
Results of the environmental sensitivity of the proposed area .....	9
MAP OF RELATIVE AGRICULTURE THEME SENSITIVITY .....	9
MAP OF RELATIVE ANIMAL SPECIES THEME SENSITIVITY .....	10
MAP OF RELATIVE AQUATIC BIODIVERSITY THEME SENSITIVITY .....	11
MAP OF RELATIVE ARCHAEOLOGICAL AND CULTURAL HERITAGE THEME SENSITIVITY .....	12
MAP OF RELATIVE CIVIL AVIATION THEME SENSITIVITY .....	13
MAP OF RELATIVE DEFENCE THEME SENSITIVITY .....	14
MAP OF RELATIVE PALEONTOLOGY THEME SENSITIVITY .....	15
MAP OF RELATIVE PLANT SPECIES THEME SENSITIVITY .....	16
MAP OF RELATIVE TERRESTRIAL BIODIVERSITY THEME SENSITIVITY .....	19

## Proposed Project Location

### Orientation map 1: General location



## Map of proposed site and relevant area(s)



## Cadastral details of the proposed site

Property details:

No	Farm Name	Farm/ Erf No	Portion	Latitude	Longitude	Property Type
1	HEMEL EN AARDE	585	0	34°23'32.9S	19°14'7.27E	Farm
2	HEMEL EN AARDE	585	0	34°22'49.62S	19°15'22.43E	Farm Portion

Development footprint<sup>1</sup> vertices:

No development footprint(s) specified.

## Wind and Solar developments with an approved Environmental Authorisation or applications under consideration within 30 km of the proposed area

No nearby wind or solar developments found.

## Environmental Management Frameworks relevant to the application

---

<sup>1</sup> “development footprint”, means the area within the site on which the development will take place and includes all ancillary developments for example roads, power lines, boundary walls, paving etc. which require vegetation clearance or which will be disturbed and for which the application has been submitted.

No intersections with EMF areas found.

## Environmental screening results and assessment outcomes

The following sections contain a summary of any development incentives, restrictions, exclusions or prohibitions that apply to the proposed development site as well as the most environmental sensitive features on the site based on the site sensitivity screening results for the application classification that was selected. The application classification selected for this report is:

**Transformation of land | Indigenous vegetation.**

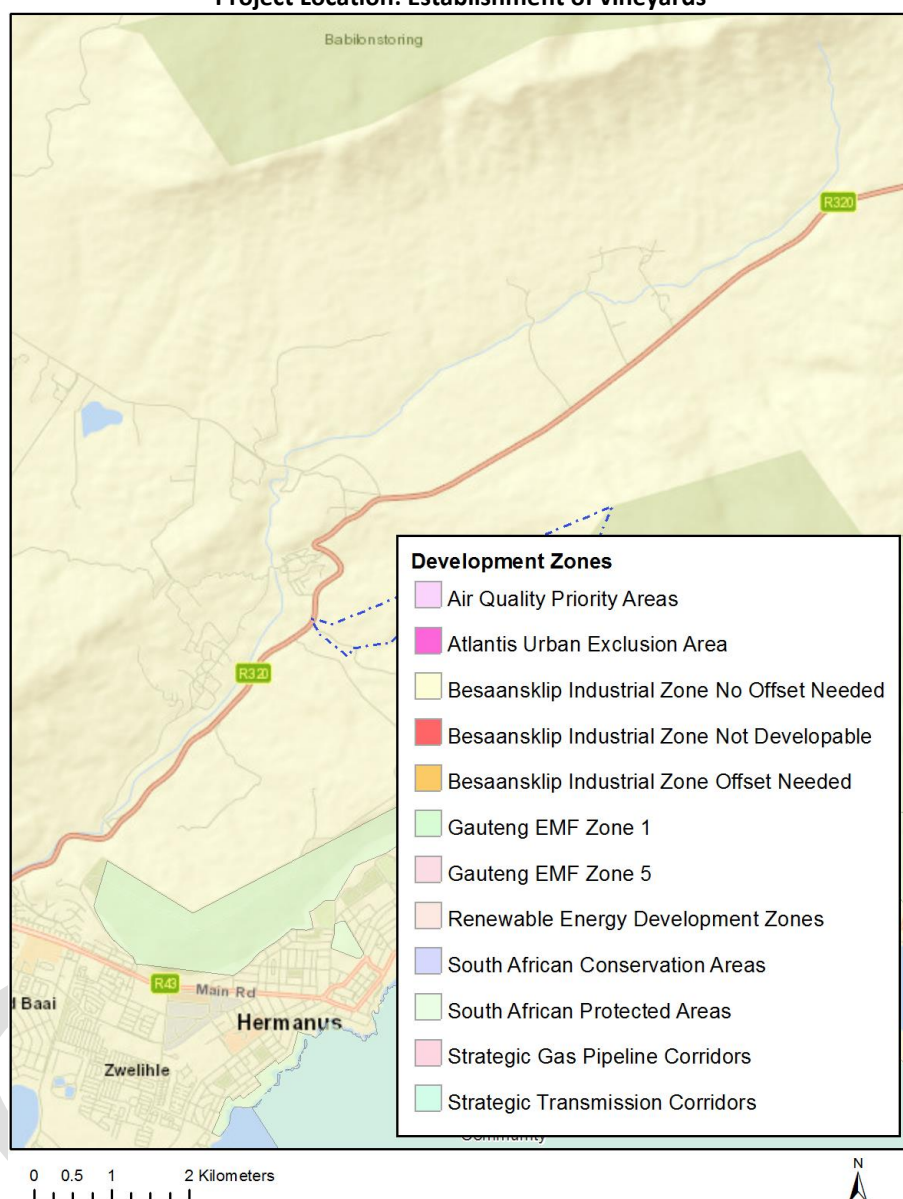
### Relevant development incentives, restrictions, exclusions or prohibitions

The following development incentives, restrictions, exclusions or prohibitions and their implications that apply to this site are indicated below.

No intersection with any development zones found.

Map indicating proposed development footprint within applicable development incentive, restriction, exclusion or prohibition zones

**Project Location: Establishment of vineyards**



### Proposed Development Area Environmental Sensitivity

The following summary of the development site environmental sensitivities is identified. Only the highest environmental sensitivity is indicated. The footprint environmental sensitivities for the proposed development footprint as identified, are indicative only and must be verified on site by a suitably qualified person before the specialist assessments identified below can be confirmed.

Theme	Very High sensitivity	High sensitivity	Medium sensitivity	Low sensitivity
Agriculture Theme	X			
Animal Species Theme		X		

Aquatic Biodiversity Theme	X			
Archaeological and Cultural Heritage Theme				X
Civil Aviation Theme			X	
Defence Theme				X
Paleontology Theme	X			
Plant Species Theme			X	
Terrestrial Biodiversity Theme	X			

### Specialist assessments identified

Based on the selected classification, and the environmental sensitivities of the proposed development footprint, the following list of specialist assessments have been identified for inclusion in the assessment report. It is the responsibility of the EAP to confirm this list and to motivate in the assessment report, the reason for not including any of the identified specialist study including the provision of photographic evidence of the site situation.

N o	Special ist assess ment	Assessment Protocol
1	Landscape/Visual Impact Assessment	<a href="https://screening.environment.gov.za/ScreeningDownloads/AssessmentProtocols/Gazetted_General_Requirement_Assessment_Protocols.pdf">https://screening.environment.gov.za/ScreeningDownloads/AssessmentProtocols/Gazetted_General_Requirement_Assessment_Protocols.pdf</a>
2	Archaeological and Cultural Heritage Impact Assessment	<a href="https://screening.environment.gov.za/ScreeningDownloads/AssessmentProtocols/Gazetted_General_Requirement_Assessment_Protocols.pdf">https://screening.environment.gov.za/ScreeningDownloads/AssessmentProtocols/Gazetted_General_Requirement_Assessment_Protocols.pdf</a>
3	Palaeontology Impact Assessment	<a href="https://screening.environment.gov.za/ScreeningDownloads/AssessmentProtocols/Gazetted_General_Requirement_Assessment_Protocols.pdf">https://screening.environment.gov.za/ScreeningDownloads/AssessmentProtocols/Gazetted_General_Requirement_Assessment_Protocols.pdf</a>
4	Terrestrial Biodiversity Impact Assessment	<a href="https://screening.environment.gov.za/ScreeningDownloads/AssessmentProtocols/Gazetted_Terrestrial_Biodiversity_Assessment_Protocols.pdf">https://screening.environment.gov.za/ScreeningDownloads/AssessmentProtocols/Gazetted_Terrestrial_Biodiversity_Assessment_Protocols.pdf</a>
5	Aquatic Biodiversity Impact Assessment	<a href="https://screening.environment.gov.za/ScreeningDownloads/AssessmentProtocols/Gazetted_Aquatic_Biodiversity_Assessment_Protocols.pdf">https://screening.environment.gov.za/ScreeningDownloads/AssessmentProtocols/Gazetted_Aquatic_Biodiversity_Assessment_Protocols.pdf</a>
6	Socio-Economic Assessment	<a href="https://screening.environment.gov.za/ScreeningDownloads/AssessmentProtocols/Gazetted_General_Requirement_Assessment_Protocols.pdf">https://screening.environment.gov.za/ScreeningDownloads/AssessmentProtocols/Gazetted_General_Requirement_Assessment_Protocols.pdf</a>
7	Plant Species	<a href="https://screening.environment.gov.za/ScreeningDownloads/AssessmentProtocols/Gazetted_General_Requirement_Assessment_Protocols.pdf">https://screening.environment.gov.za/ScreeningDownloads/AssessmentProtocols/Gazetted_General_Requirement_Assessment_Protocols.pdf</a>

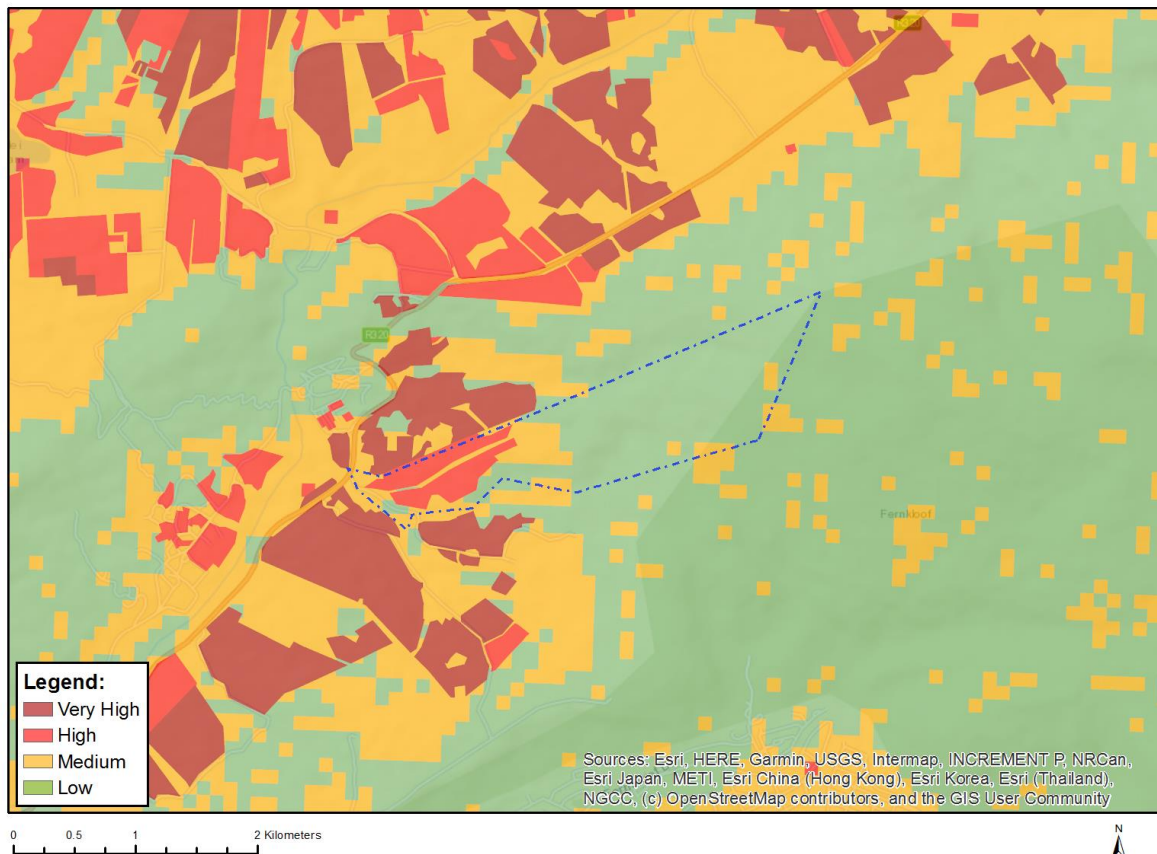
	Assessment	<a href="#">/Gazetted Plant Species Assessment Protocols.pdf</a>
8	Animal Species Assessment	<a href="https://screening.environment.gov.za/ScreeningDownloads/AssessmentProtocols/Gazetted_Animal_Species_Assessment_Protocols.pdf">https://screening.environment.gov.za/ScreeningDownloads/AssessmentProtocols/Gazetted Animal Species Assessment Protocols.pdf</a>



## Results of the environmental sensitivity of the proposed area.

The following section represents the results of the screening for environmental sensitivity of the proposed site for relevant environmental themes associated with the project classification. It is the duty of the EAP to ensure that the environmental themes provided by the screening tool are comprehensive and complete for the project. Refer to the disclaimer.

### MAP OF RELATIVE AGRICULTURE THEME SENSITIVITY

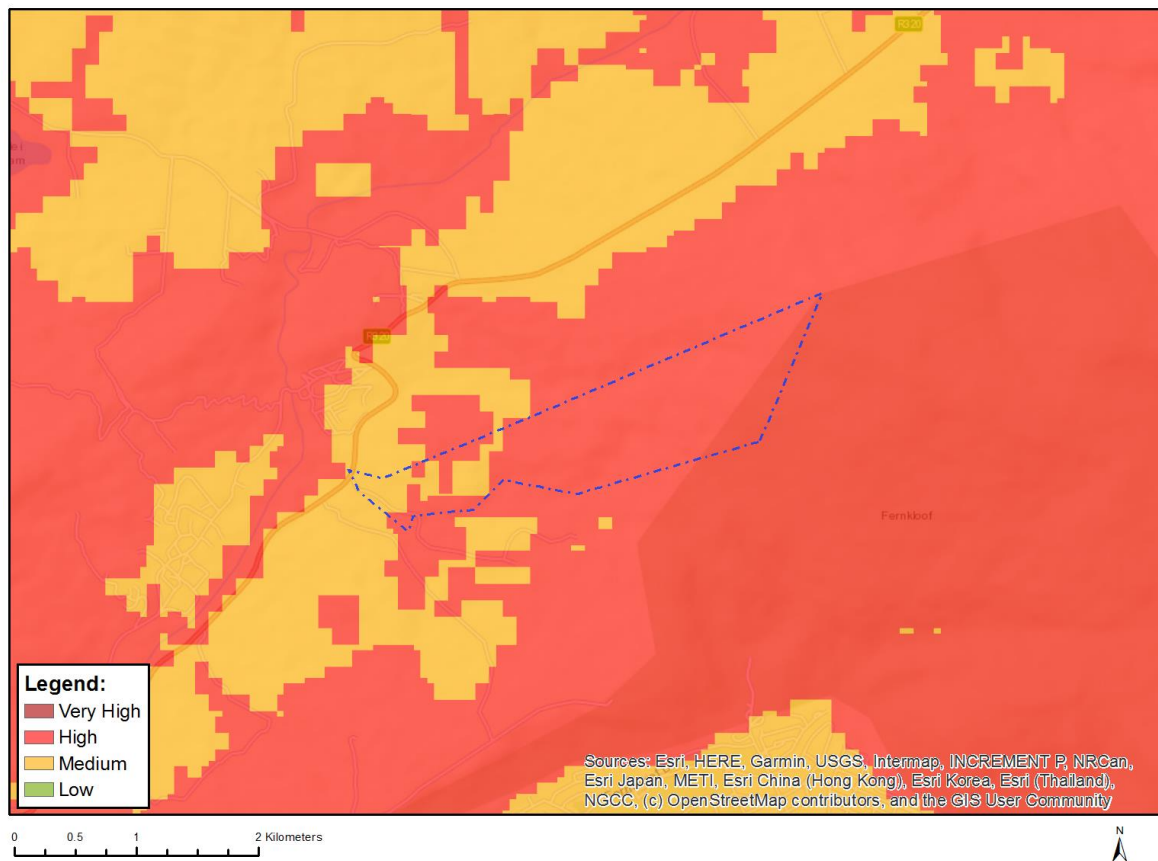


Very High sensitivity	High sensitivity	Medium sensitivity	Low sensitivity
X			

#### Sensitivity Features:

Sensitivity	Feature(s)
High	Old Fields;Land capability;01. Very low/02. Very low/03. Low-Very low/04. Low-Very low/05. Low
High	Old Fields;Land capability;06. Low-Moderate/07. Low-Moderate/08. Moderate
Low	Land capability;01. Very low/02. Very low/03. Low-Very low/04. Low-Very low/05. Low
Medium	Land capability;06. Low-Moderate/07. Low-Moderate/08. Moderate
Very High	Viticulture;Land capability;06. Low-Moderate/07. Low-Moderate/08. Moderate

## MAP OF RELATIVE ANIMAL SPECIES THEME SENSITIVITY



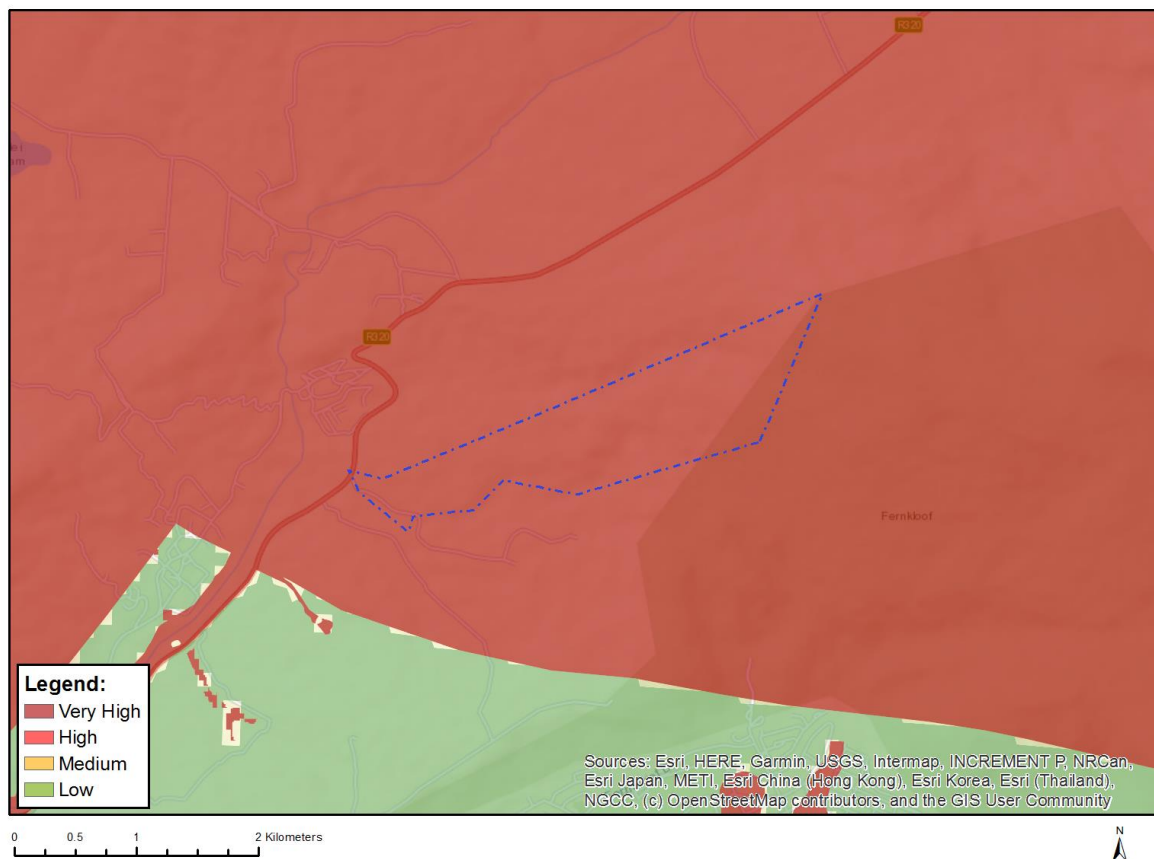
Where only a sensitive plant unique number or sensitive animal unique number is provided in the screening report and an assessment is required, the environmental assessment practitioner (EAP) or specialist is required to email SANBI at [eiadatarequests@sanbi.org.za](mailto:eiadatarequests@sanbi.org.za) listing all sensitive species with their unique identifiers for which information is required. The name has been withheld as the species may be prone to illegal harvesting and must be protected. SANBI will release the actual species name after the details of the EAP or specialist have been documented.

Very High sensitivity	High sensitivity	Medium sensitivity	Low sensitivity
	X		

### Sensitivity Features:

Sensitivity	Feature(s)
High	Aves-Circus ranivorus
High	Aves-Circus maurus
High	Aves-Hydroprogne caspia
High	Aves-Falco biarmicus
High	Aves-Aquila verreauxii
High	Aves-Neotis denhami
High	Aves-Pelecanus onocrotalus
Medium	Aves-Circus ranivorus
Medium	Aves-Turnix hottentottus
Medium	Aves-Sarothrura affinis
Medium	Insecta-Aloeides egerides
Medium	Invertebrate-Brinckiella aptera
Medium	Invertebrate-Aneuryphymus montanus

## MAP OF RELATIVE AQUATIC BIODIVERSITY THEME SENSITIVITY

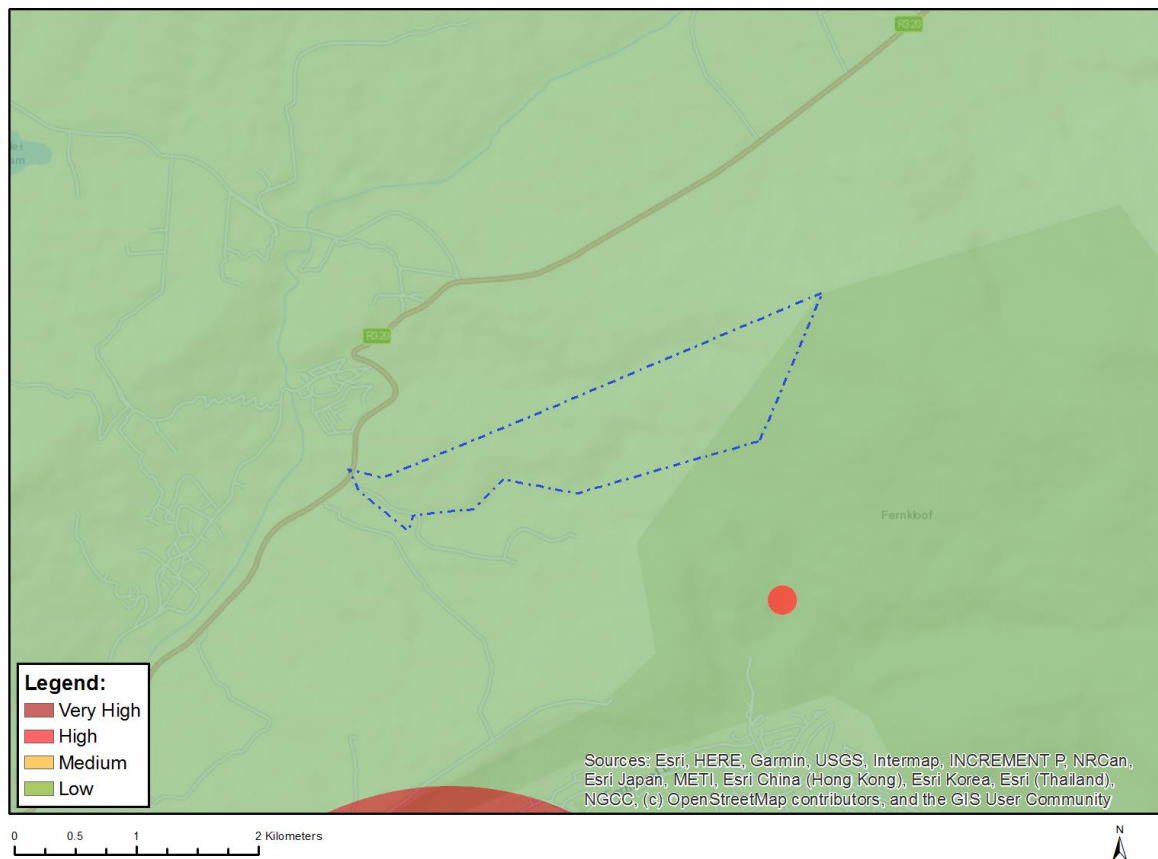


Very High sensitivity	High sensitivity	Medium sensitivity	Low sensitivity
X			

### Sensitivity Features:

Sensitivity	Feature(s)
Very High	Aquatic CBAs
Very High	Strategic water source area
Very High	Wetlands and Estuaries

## MAP OF RELATIVE ARCHAEOLOGICAL AND CULTURAL HERITAGE THEME SENSITIVITY

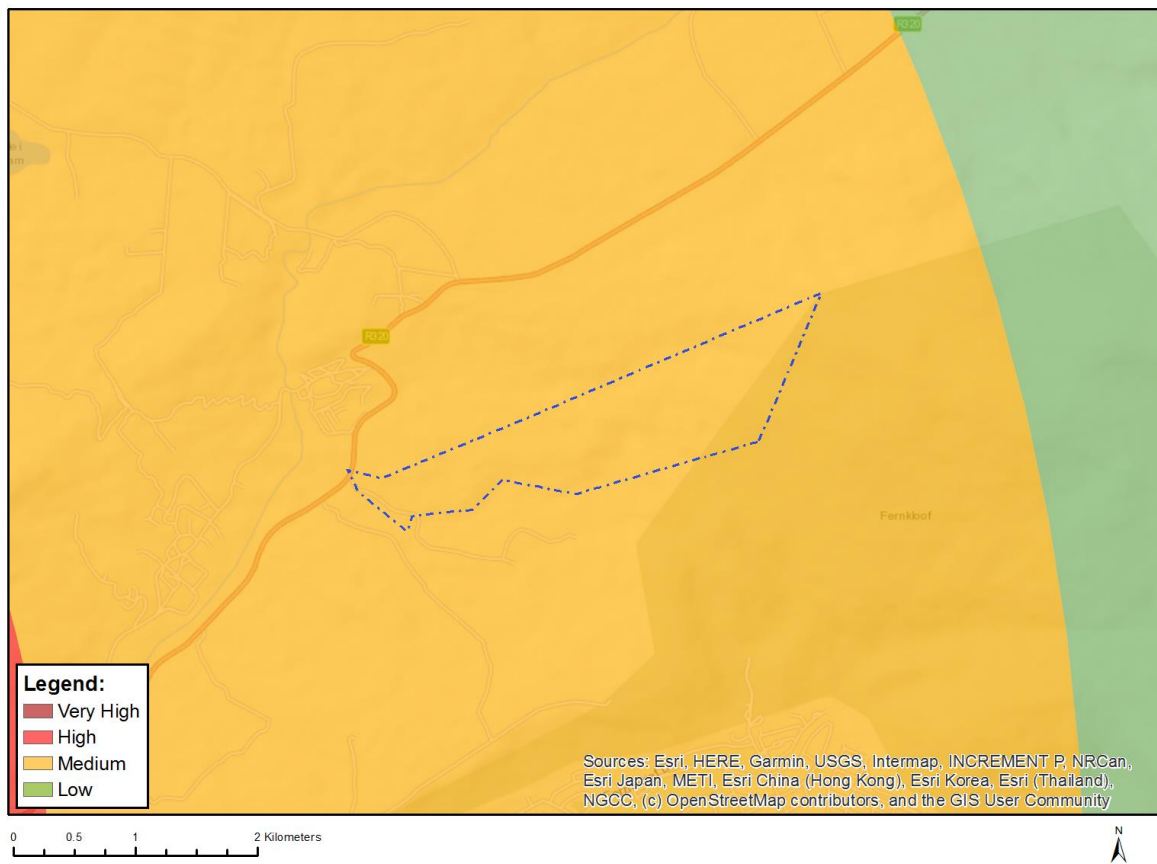


Very High sensitivity	High sensitivity	Medium sensitivity	Low sensitivity
			X

### Sensitivity Features:

Sensitivity	Feature(s)
Low	Low sensitivity

## MAP OF RELATIVE CIVIL AVIATION THEME SENSITIVITY

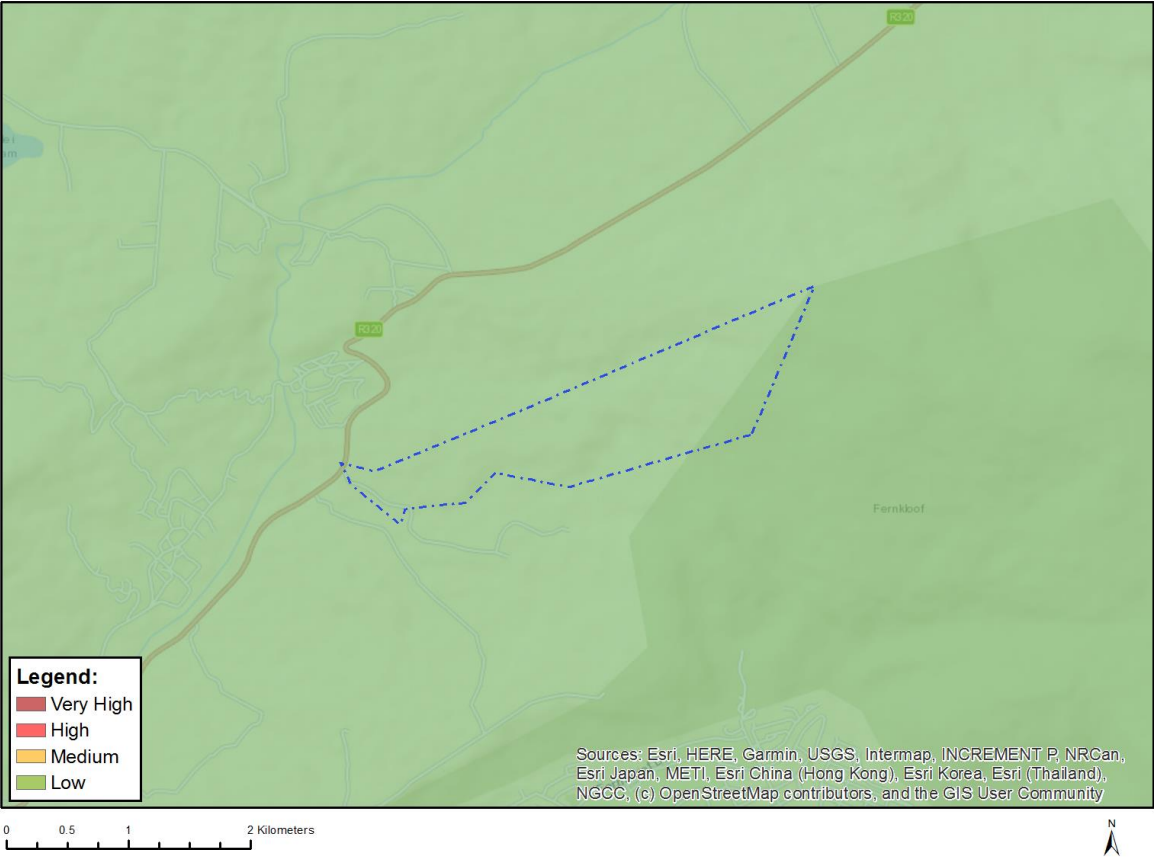


Very High sensitivity	High sensitivity	Medium sensitivity	Low sensitivity
		X	

### Sensitivity Features:

Sensitivity	Feature(s)
Medium	Between 8 and 15 km of other civil aviation aerodrome

MAP OF RELATIVE DEFENCE THEME SENSITIVITY



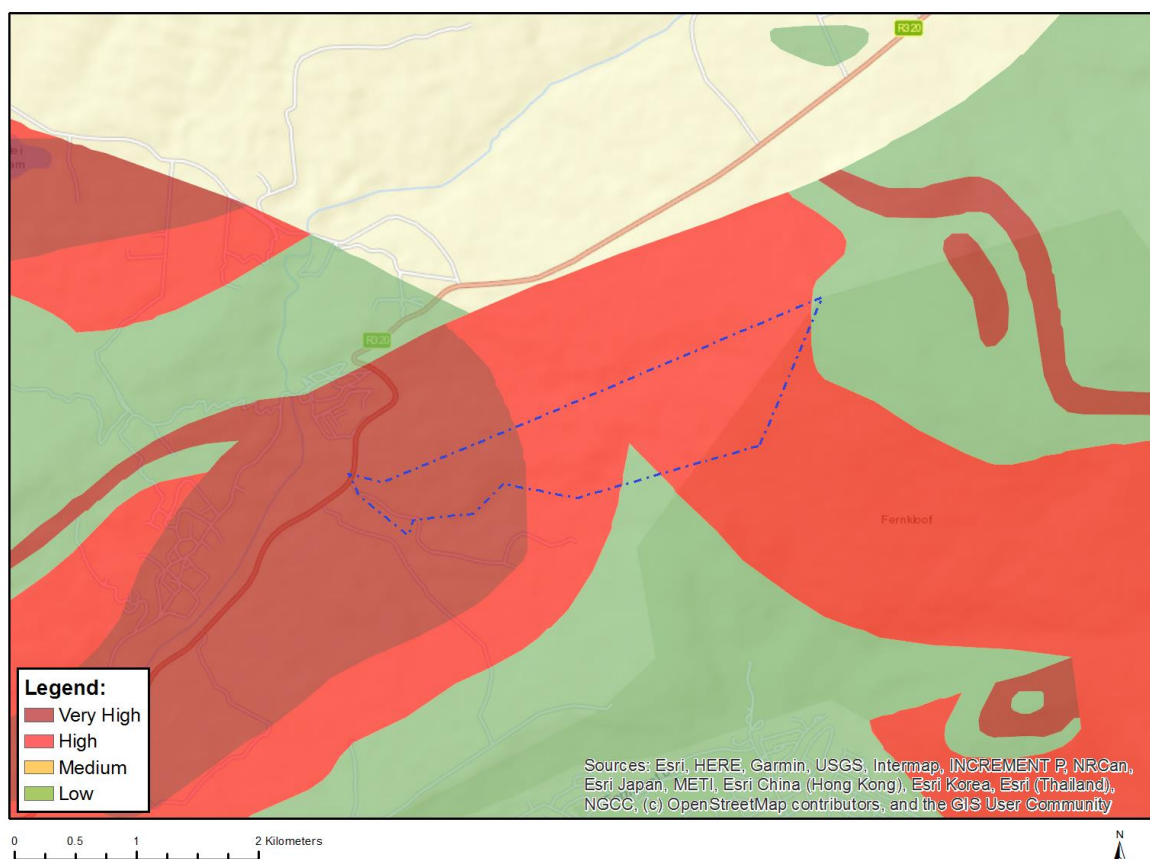
Very High sensitivity	High sensitivity	Medium sensitivity	Low sensitivity
			X

Sensitivity Features:

Sensitivity	Feature(s)
Low	Low Sensitivity



## MAP OF RELATIVE PALEONTOLOGY THEME SENSITIVITY

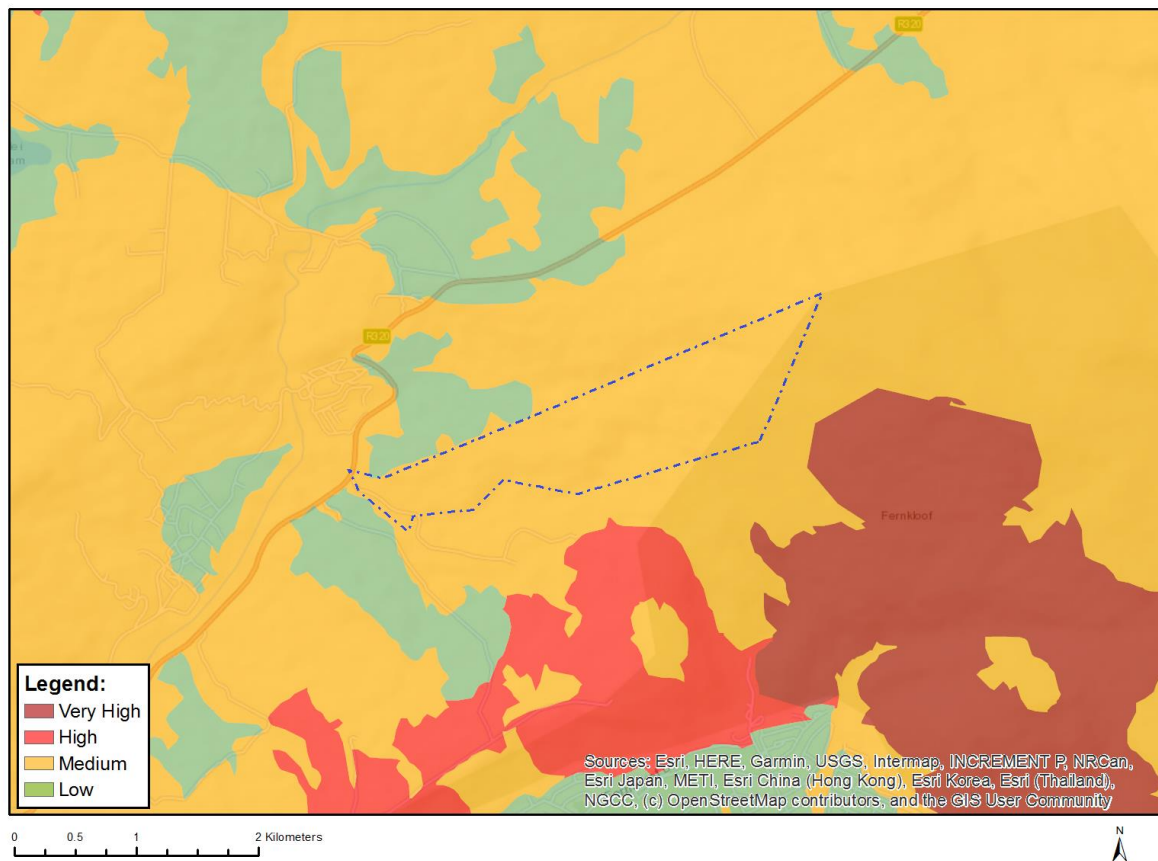


Very High sensitivity	High sensitivity	Medium sensitivity	Low sensitivity
X			

### Sensitivity Features:

Sensitivity	Feature(s)
High	Features with a High paleontological sensitivity
Low	Features with a Low paleontological sensitivity
Very High	Features with a Very High paleontological sensitivity

## MAP OF RELATIVE PLANT SPECIES THEME SENSITIVITY



Where only a sensitive plant unique number or sensitive animal unique number is provided in the screening report and an assessment is required, the environmental assessment practitioner (EAP) or specialist is required to email SANBI at [eiadatarequests@sanbi.org.za](mailto:eiadatarequests@sanbi.org.za) listing all sensitive species with their unique identifiers for which information is required. The name has been withheld as the species may be prone to illegal harvesting and must be protected. SANBI will release the actual species name after the details of the EAP or specialist have been documented.

Very High sensitivity	High sensitivity	Medium sensitivity	Low sensitivity
		X	

### Sensitivity Features:

Sensitivity	Feature(s)
Low	Low Sensitivity
Medium	Lampranthus spiniformis
Medium	Acrodon parvifolius
Medium	Acrodon subulatus
Medium	Delosperma guthriei
Medium	Amphithalea virgata
Medium	Xiphotheca guthriei
Medium	Liparia calycina
Medium	Aspalathus excelsa
Medium	Aspalathus millefolia
Medium	Aspalathus oblongifolia
Medium	Aspalathus psoraleoides
Medium	Otholobium pungens

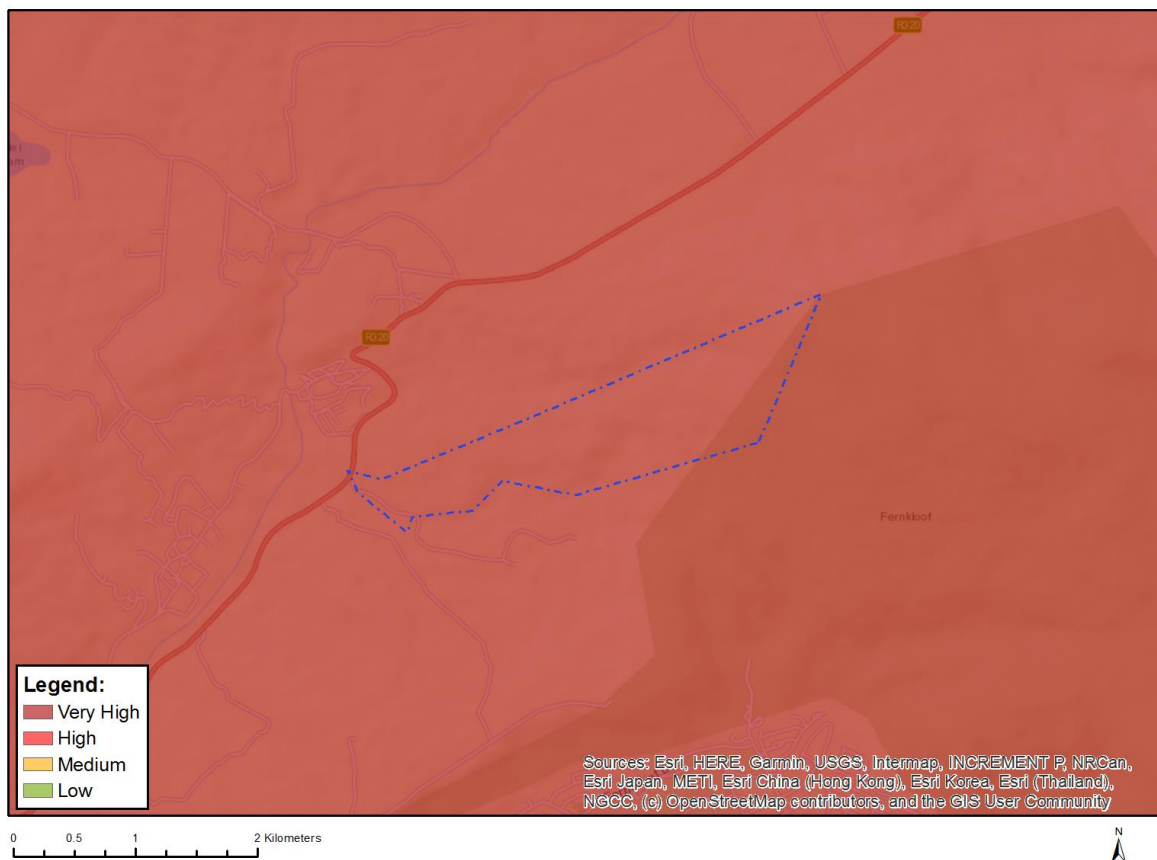


Medium	<i>Otholobium thomii</i>
Medium	<i>Podalyria orbicularis</i>
Medium	<i>Thesium ecklonianum</i>
Medium	<i>Audouinia capitata</i>
Medium	<i>Berzelia incurva</i>
Medium	<i>Berzelia rubra</i>
Medium	<i>Leucadendron coniferum</i>
Medium	<i>Leucadendron elimense</i> subsp. <i>salteri</i>
Medium	<i>Leucadendron linifolium</i>
Medium	<i>Leucadendron modestum</i>
Medium	<i>Leucadendron platyspermum</i>
Medium	<i>Leucospermum hypophyllocarpodendron</i> subsp. <i>hypophyllocarpodendron</i>
Medium	<i>Leucospermum prostratum</i>
Medium	<i>Protea angustata</i>
Medium	<i>Protea longifolia</i>
Medium	<i>Protea restionifolia</i>
Medium	<i>Paranomus abrotanifolius</i>
Medium	<i>Mimetes hirtus</i>
Medium	<i>Mimetes palustris</i>
Medium	<i>Serruria flagellifolia</i>
Medium	<i>Serruria heterophylla</i>
Medium	<i>Serruria inconspicua</i>
Medium	<i>Serruria meisneriana</i>
Medium	<i>Merciera azurea</i>
Medium	<i>Merciera brevifolia</i>
Medium	<i>Merciera tenuifolia</i>
Medium	<i>Roella arenaria</i>
Medium	<i>Apodytes geldenhuysii</i>
Medium	<i>Manulea exigua</i>
Medium	<i>Pentameris pholiuroides</i>
Medium	<i>Ehrharta setacea</i> subsp. <i>disticha</i>
Medium	<i>Ehrharta setacea</i> subsp. <i>uniflora</i>
Medium	<i>Lobostemon capitatus</i>
Medium	<i>Echiostachys ecklonianus</i>
Medium	<i>Aristea recisa</i>
Medium	<i>Aristea zeyheri</i>
Medium	<i>Aristea teretifolia</i>
Medium	<i>Tritoniopsis caledonensis</i>
Medium	<i>Tritoniopsis flexuosa</i>
Medium	<i>Geissorhiza bryicola</i>
Medium	<i>Ixia erubescens</i>
Medium	Sensitive species 629
Medium	Sensitive species 232
Medium	Sensitive species 458
Medium	Sensitive species 499
Medium	Sensitive species 934
Medium	Sensitive species 650
Medium	Sensitive species 112
Medium	Sensitive species 1104
Medium	<i>Pauridia alba</i>
Medium	<i>Oxalis duriuscula</i>
Medium	<i>Erica brachysepala</i>
Medium	<i>Erica capillaris</i> var. <i>capillaris</i>
Medium	<i>Erica floccifera</i>
Medium	<i>Erica hendricksei</i> var. <i>hendricksei</i>
Medium	<i>Erica lageniformis</i>
Medium	<i>Erica melanacme</i>
Medium	<i>Erica patersonii</i>
Medium	<i>Erica propendens</i>
Medium	<i>Erica rhodopis</i>

Medium	<i>Erica ribisaria</i>
Medium	<i>Erica riparia</i>
Medium	<i>Erica turrisbabylonica</i>
Medium	<i>Erica ustulescens</i>
Medium	<i>Erica xeranthemifolia</i>
Medium	<i>Erica erina</i>
Medium	<i>Erica ecklonii</i>
Medium	<i>Erica williamsiorum</i>
Medium	<i>Erica pilosiflora</i> subsp. <i>pilosiflora</i>
Medium	<i>Erica paucifolia</i> subsp. <i>paucifolia</i>
Medium	<i>Erica paucifolia</i> subsp. <i>ciliata</i>
Medium	<i>Erica karwyderi</i>
Medium	<i>Erica hermani</i>
Medium	<i>Erica ioniana</i>
Medium	<i>Erica macowanii</i> subsp. <i>lanceolata</i>
Medium	<i>Erica perspicua</i> subsp. <i>latifolia</i>
Medium	<i>Sonderothamnus speciosus</i>
Medium	<i>Brachysiphon rupestris</i>
Medium	<i>Chironia stokoei</i>
Medium	Sensitive species 242
Medium	Sensitive species 1250
Medium	Sensitive species 714
Medium	<i>Centella rupestris</i>
Medium	<i>Ficinia distans</i>
Medium	<i>Ficinia elatior</i>
Medium	<i>Ficinia pinguior</i>
Medium	<i>Thamnochortus dumosus</i>
Medium	<i>Thamnochortus pellucidus</i>
Medium	<i>Elegia fenestrata</i>
Medium	<i>Anthochortus graminifolius</i>
Medium	<i>Hypodiscus rugosus</i>
Medium	<i>Restio harveyi</i>
Medium	<i>Restio paludicola</i>
Medium	<i>Restio clandestinus</i>
Medium	<i>Restio anomalus</i>
Medium	<i>Restio papillosus</i>
Medium	Sensitive species 501
Medium	Sensitive species 460
Medium	Sensitive species 1139
Medium	<i>Acrolophia ustulata</i>
Medium	<i>Pterygodium cruciferum</i>
Medium	<i>Pterygodium bifidum</i>
Medium	<i>Evotella rubiginosa</i>
Medium	<i>Gnidia humilis</i>
Medium	<i>Gnidia sonderiana</i>
Medium	<i>Gnidia ornata</i>
Medium	<i>Metalasia plicata</i>
Medium	<i>Metalasia tenuifolia</i>
Medium	<i>Syncarpha zeyheri</i>
Medium	<i>Zyrphelis corymbosa</i>
Medium	<i>Zyrphelis spathulata</i>
Medium	<i>Anaxeton lundgrenii</i>
Medium	<i>Thaminophyllum latifolium</i>
Medium	<i>Pteronia scabra</i>
Medium	<i>Pteronia tenuifolia</i>
Medium	<i>Arctotheca forbesiana</i>
Medium	<i>Osmitopsis glabra</i>
Medium	<i>Agathosma hookeri</i>
Medium	<i>Euchaetis schlechteri</i>
Medium	<i>Cliffortia ericifolia</i>

Medium	<i>Cliffortia monophylla</i>
Medium	<i>Muraltia hirsuta</i>
Medium	Sensitive species 719
Medium	Sensitive species 1151
Medium	Sensitive species 547
Medium	<i>Phylica anomala</i>
Medium	<i>Phylica diosmoides</i>
Medium	<i>Phylica virgata</i>
Medium	<i>Skiatophytum skiatophytoides</i>
Medium	<i>Lampranthus debilis</i>
Medium	<i>Xiphotheca reflexa</i>
Medium	<i>Aspalathus lebeckioides</i>
Medium	<i>Aponogeton fugax</i>
Medium	<i>Protea aspera</i>
Medium	<i>Paranomus bolusii</i>
Medium	Sensitive species 593
Medium	Sensitive species 800
Medium	Sensitive species 335
Medium	Sensitive species 599
Medium	<i>Elegia squamosa</i>
Medium	<i>Elegia verreauxii</i>
Medium	<i>Restio paludosus</i>
Medium	<i>Restio rigoratus</i>
Medium	Sensitive species 654
Medium	<i>Pachites bodkinii</i>
Medium	<i>Lachnaea grandiflora</i>

## MAP OF RELATIVE TERRESTRIAL BIODIVERSITY THEME SENSITIVITY



Very High sensitivity	High sensitivity	Medium sensitivity	Low sensitivity
X			

**Sensitivity Features:**

Sensitivity	Feature(s)
Very High	Critical biodiversity area 1
Very High	Critical biodiversity area 2
Very High	Ecological support area 1
Very High	Ecological support area 2
Very High	Strategic Water Source Areas
Very High	Critically endangered ecosystem
Very High	Endangered ecosystem