

TYPICAL VIEW 01

ERF 01 PLAN

LEGEND:	
	Existing Trees to be retained
	Proposed new 2000L trees
	Proposed new 250-500L trees
	Planting
	Laterite walkways
	Water Feature/Natural spring
	Lawn
	Play areas
	Traffic calming
	S/w ponds & River
	Existing contours

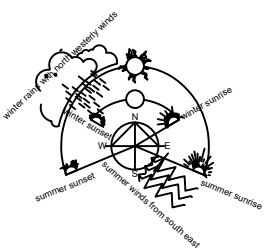
TYPICAL VIEW 02



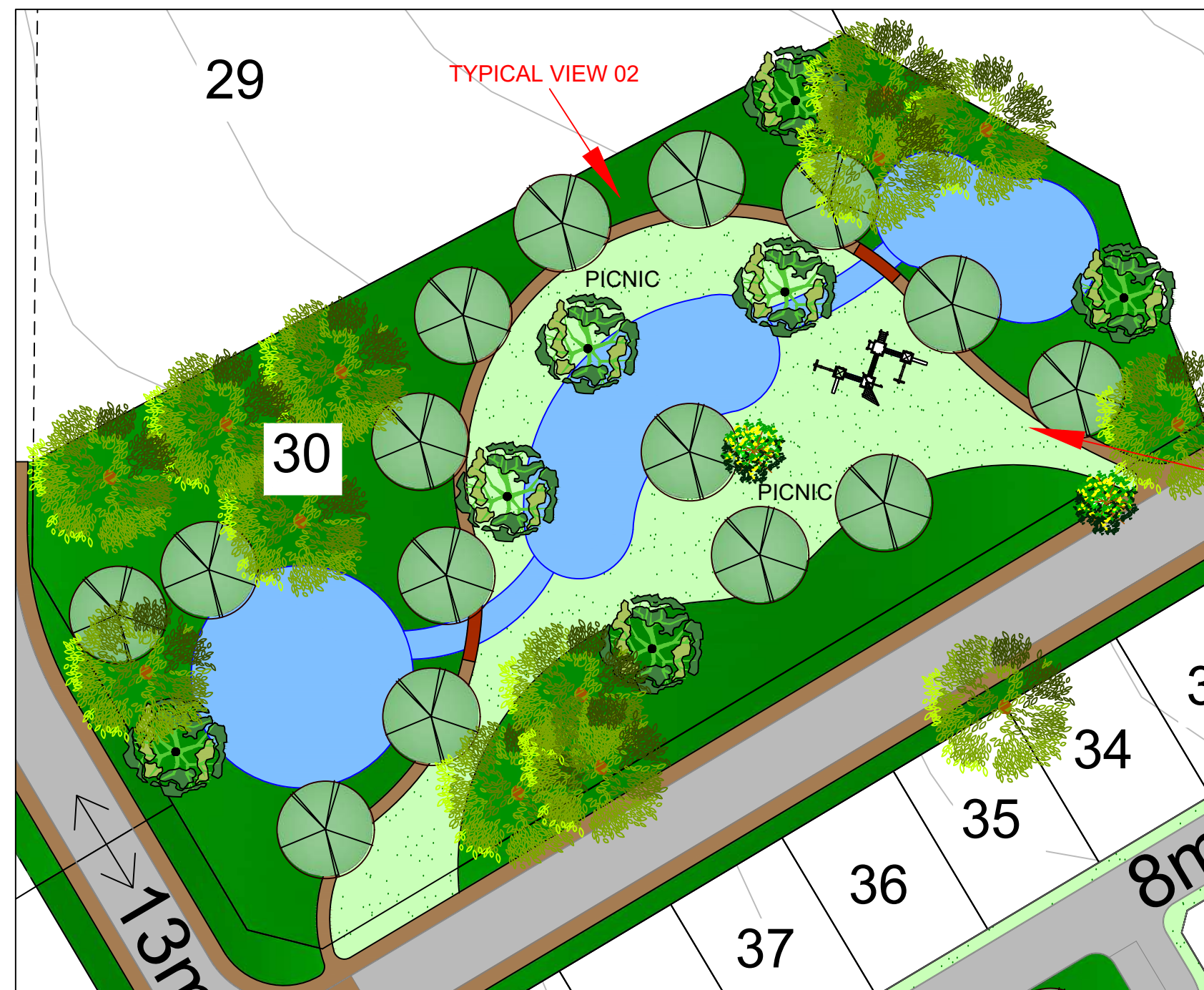
ERF 01 TYPICAL VIEW 01



ERF 01 TYPICAL VIEW 02



Project:	RIEBECK HILL ESTATE
Drawing: -	06/11/2024
Location:	ERF 01 - PUBLIC OPEN SPACE VIEWS
Scale:	A3 - 1:500
Location:	Riebeeck Kasteel
J.d.V Landscape Studio	
Igris Goosen, Email: igris@jdv.co.za, Cell: 0826110042	



ERF 30 PLAN

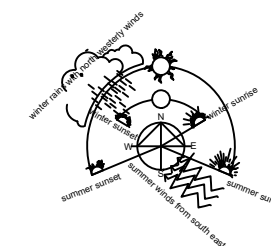
LEGEND:	
	Existing Trees to be retained
	Proposed new 2000L trees
	Proposed new 250-500L trees
	Planting
	Laterite walkways
	Water Feature/Natural spring
	Lawn
	Play areas
	Traffic calming
	S/w ponds & River
	Existing contours



ERF 30 TYPICAL VIEW 1

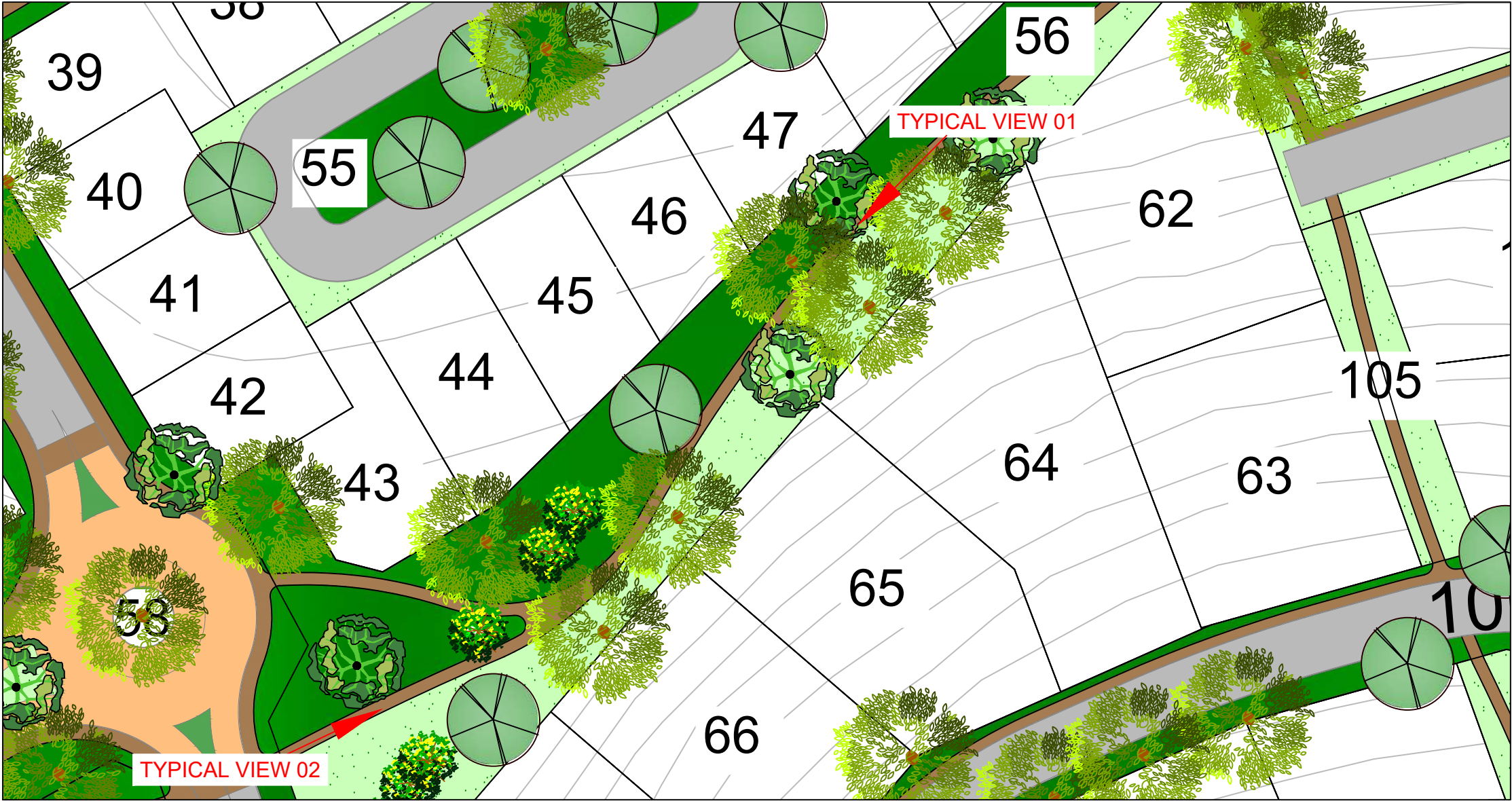


ERF 30 TYPICAL VIEW 2



Project:	RIEBECK HILL ESTATE
Drawing:	- 06/11/2024
	ERF 30 - PUBLIC OPEN SPACE VIEWS
Scale:	A3 - 1:500
Location:	Riebeeck Kasteel
J.d.V Landscape Studio	
Ignis Goosen, Email: ignis@gdv.co.za, Cell: 0826110042	

LEGEND:	
	Existing Trees to be retained
	Proposed new 2000L trees
	Proposed new 250-500L trees
	Planting
	Laterite walkways
	Water Feature/Natural spring
	Lawn
	Play areas
	Traffic calming
	S/w ponds & River
	Existing contours



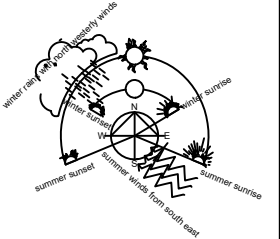
ERF 56 PLAN



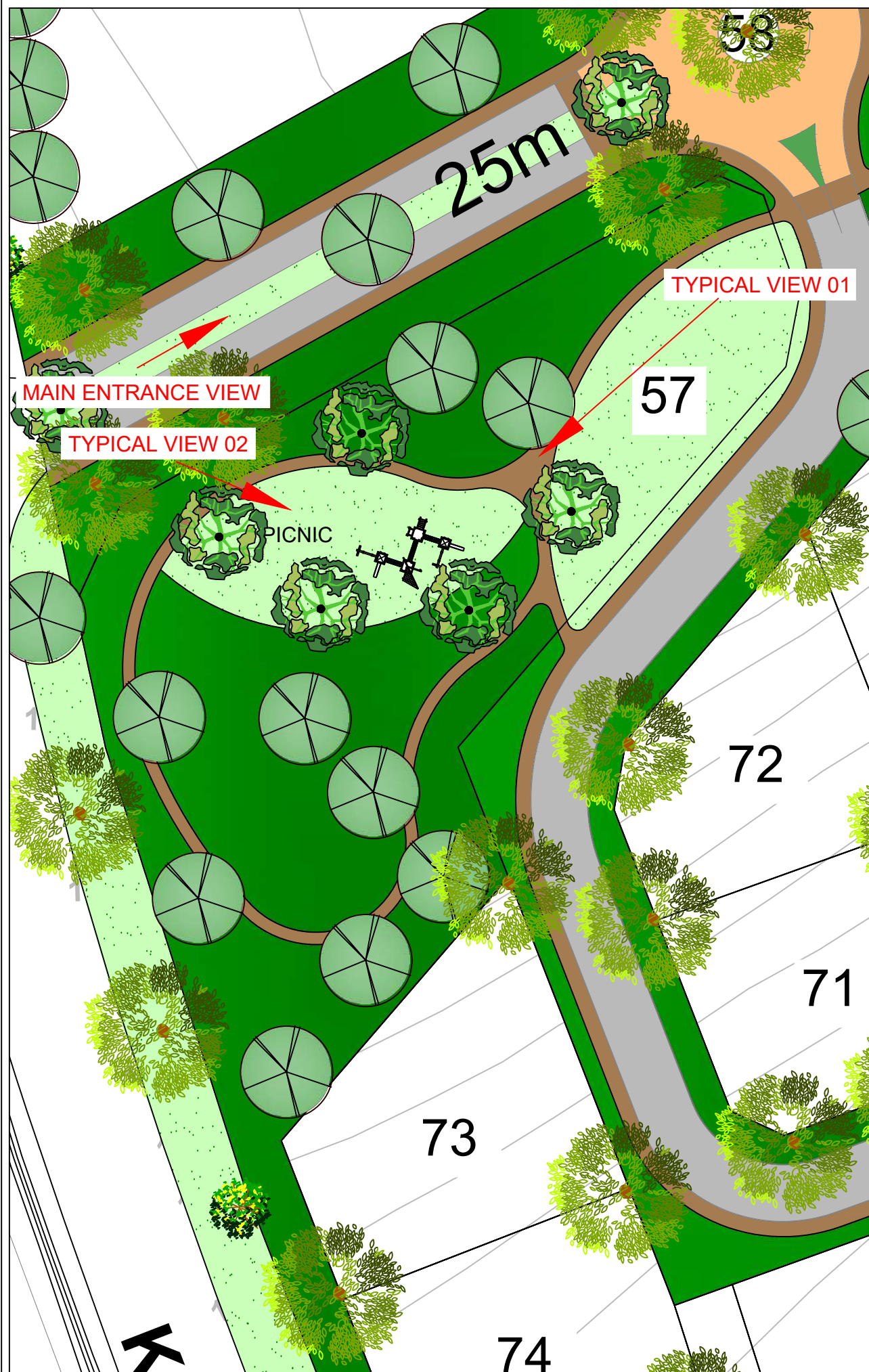
ERF 56 TYPICAL VIEW 01



ERF 56 TYPICAL VIEW 02



Project:	RIEBECK HILL ESTATE
Drawing: -	06/11/2024
Location:	ERF 56 - PUBLIC OPEN SPACE VIEWS
Scale:	A3 - 1:500
Location:	Riebeeck Kasteel
J.d.V. Landscape Studio	
Ignis Goozen, Email: ignis@jdv.co.za, Cell: 0826110942	



MAIN ENTRANCE AND ERF 57 PLAN



ERF 57 POS TYPICAL VIEW 1



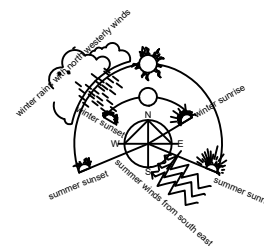
ERF 57 POS TYPICAL VIEW 2



MAIN ENTRANCE TYPICAL VIEW

LEGEND:

	Existing Trees to be retained
	Proposed new 2000L trees
	Proposed new 250-500L trees
	Planting
	Laterite walkways
	Water Feature/Natural spring
	Lawn
	Play areas
	Traffic calming
	S/w ponds & River
	Existing contours



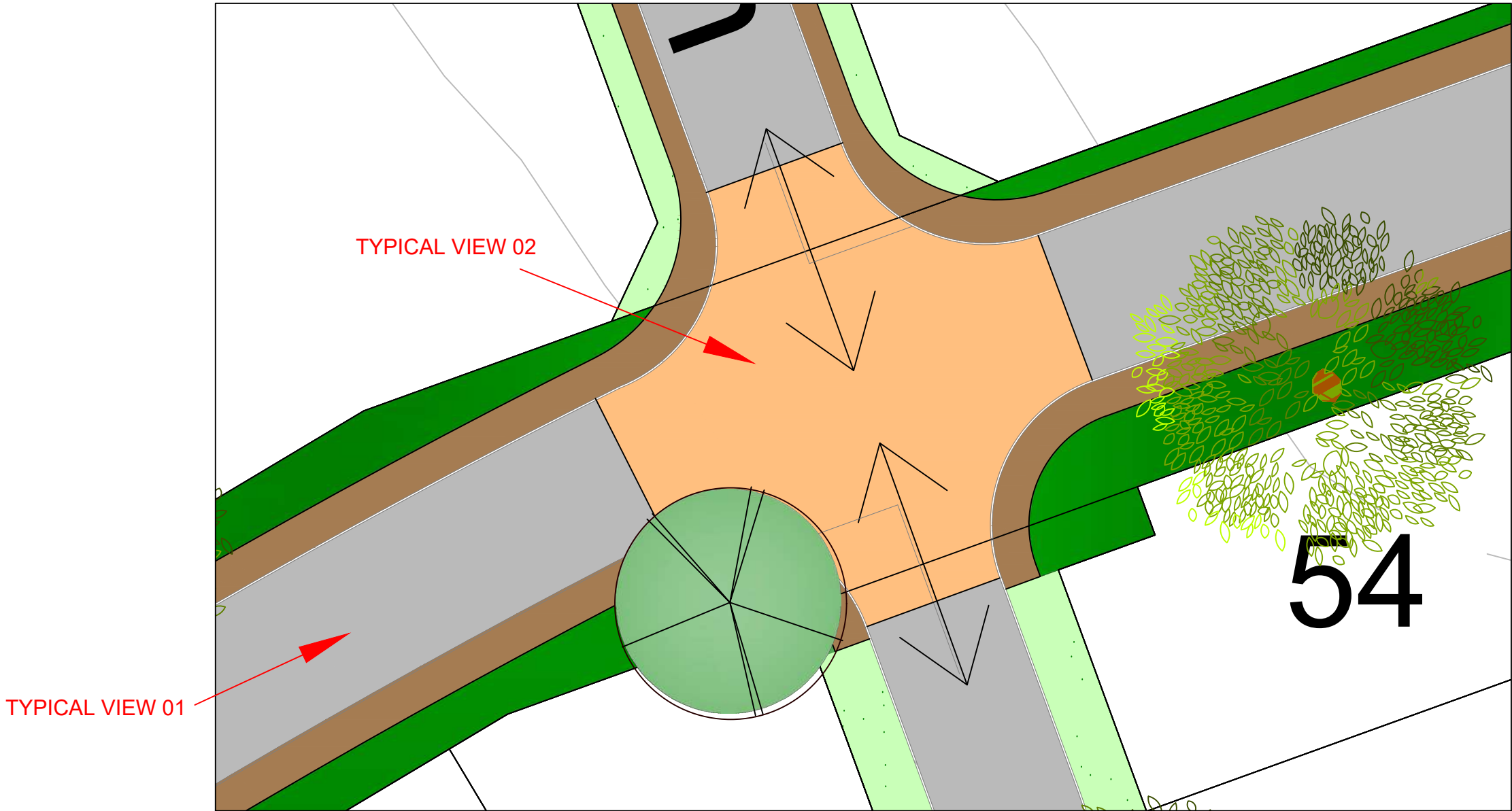
Project:
RIEBECK HILL ESTATE

Drawing: - 06/11/2024
ERF 57 & MAIN
ENTRANCE - PUBLIC
OPEN SPACE VIEWS

Scale: A3 - 1:500
Location: Riebeck Kasteel

J.d.V. Landscape Studio
Igris Goosen, Email: igris@jdv.co.za, Cell: 0826110042

LEGEND:	
	Existing Trees to be retained
	Proposed new 2000L trees
	Proposed new 250-500L trees
	Planting
	Laterite walkways
	Water Feature/Natural spring
	Lawn
	Play areas
	Traffic calming
	S/w ponds & River
	Existing contours



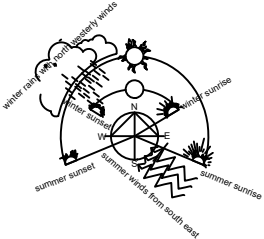
TYPICAL TRAFFIC CALMING PLAN



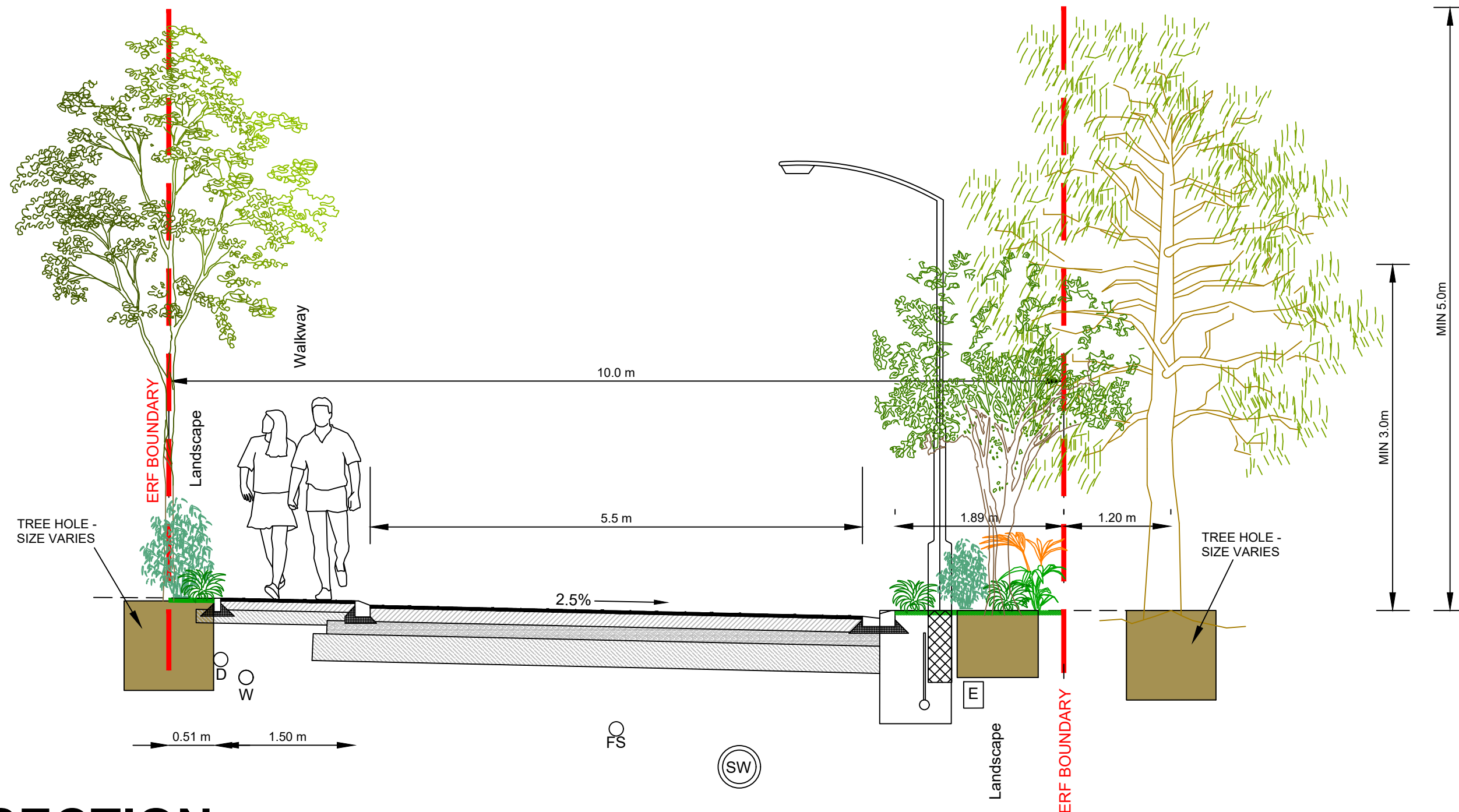
TRAFFIC CALMING TYPICAL VIEW 01



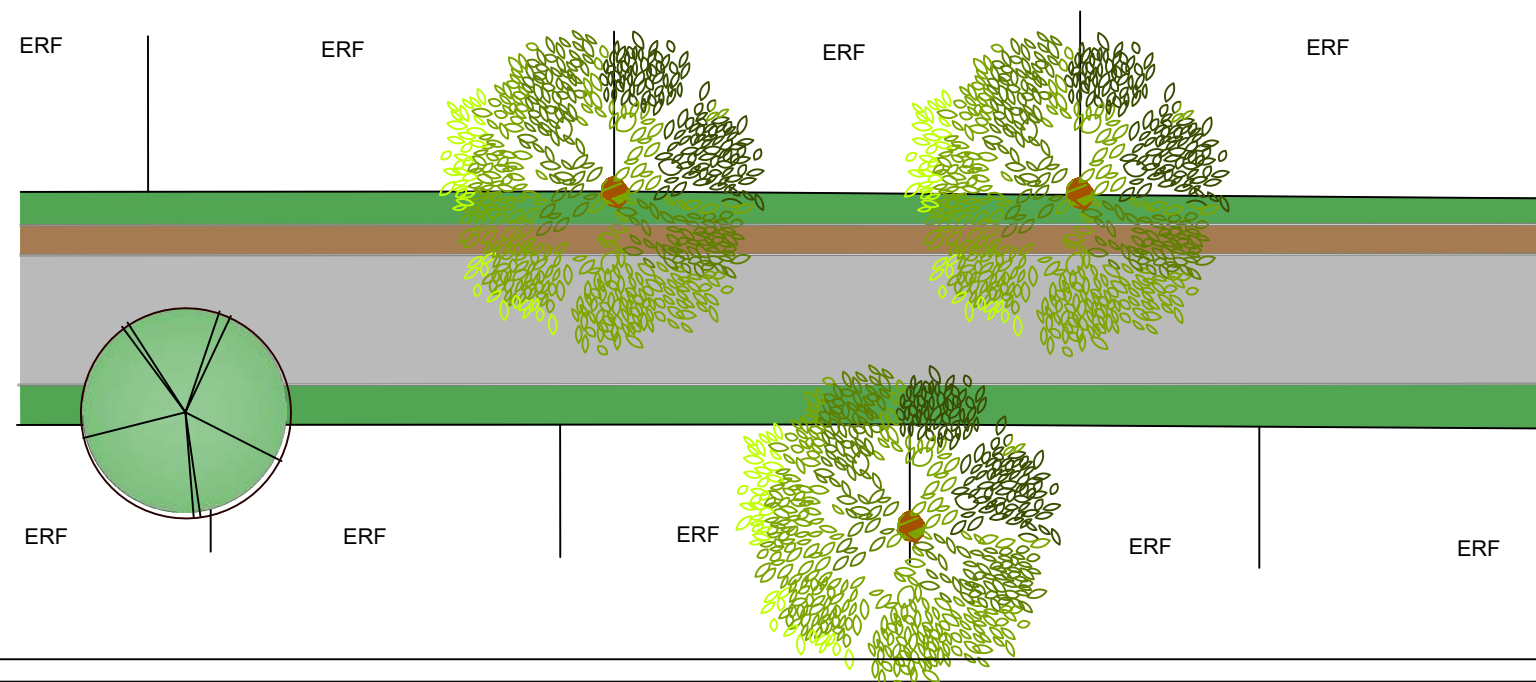
TRAFFIC CALMING TYPICAL VIEW 02



Project:	RIEBECK HILL ESTATE
Drawing: - 06/11/2024	
TYPICAL TRAFFIC CALMING	
Scale: A3 - 1:200	
Location: Riebeck Kasteel	
J.d.V Landscape Studio	
Ignis Goozen, Email: ignis@jdv.co.za, Cell: 0836110042	



SECTION



PLAN

Project:
RIEBEECK HILL ESTATE
Drawing: - 04/11/2024
TYPICAL 10M ROAD RESERVE
Scale: NTS
Location: Riebeeck Kasteel
J.d.V Landscape Studio
Ignis Goosen, Email: ignis@jdv.co.za, Cell: 0826110042



TYPICAL BOUNDARY WALL - R311 (church street)



Project:
RIEBEECK HILL ESTATE
Drawing: - 04/11/2024
TYPICAL BOUNDARY WALL TREATMENT
Scale: NTS
Location: Riebeeck Kasteel
J.d.V Landscape Studio
<small>Ignis Goosen, Email: ignis@jdv.co.za, Cell: 0826110042</small>