

**SCREENING REPORT FOR AN ENVIRONMENTAL AUTHORIZATION AS
REQUIRED BY THE 2014 EIA REGULATIONS – PROPOSED SITE
ENVIRONMENTAL SENSITIVITY**

EIA Reference number: xx

Project name: Proposed Development

Project title: Proposed Development

Date screening report generated: 10/02/2025 15:01:53

Applicant: Private

Compiler: Lornay Environmental Consulting

Compiler signature:

.....

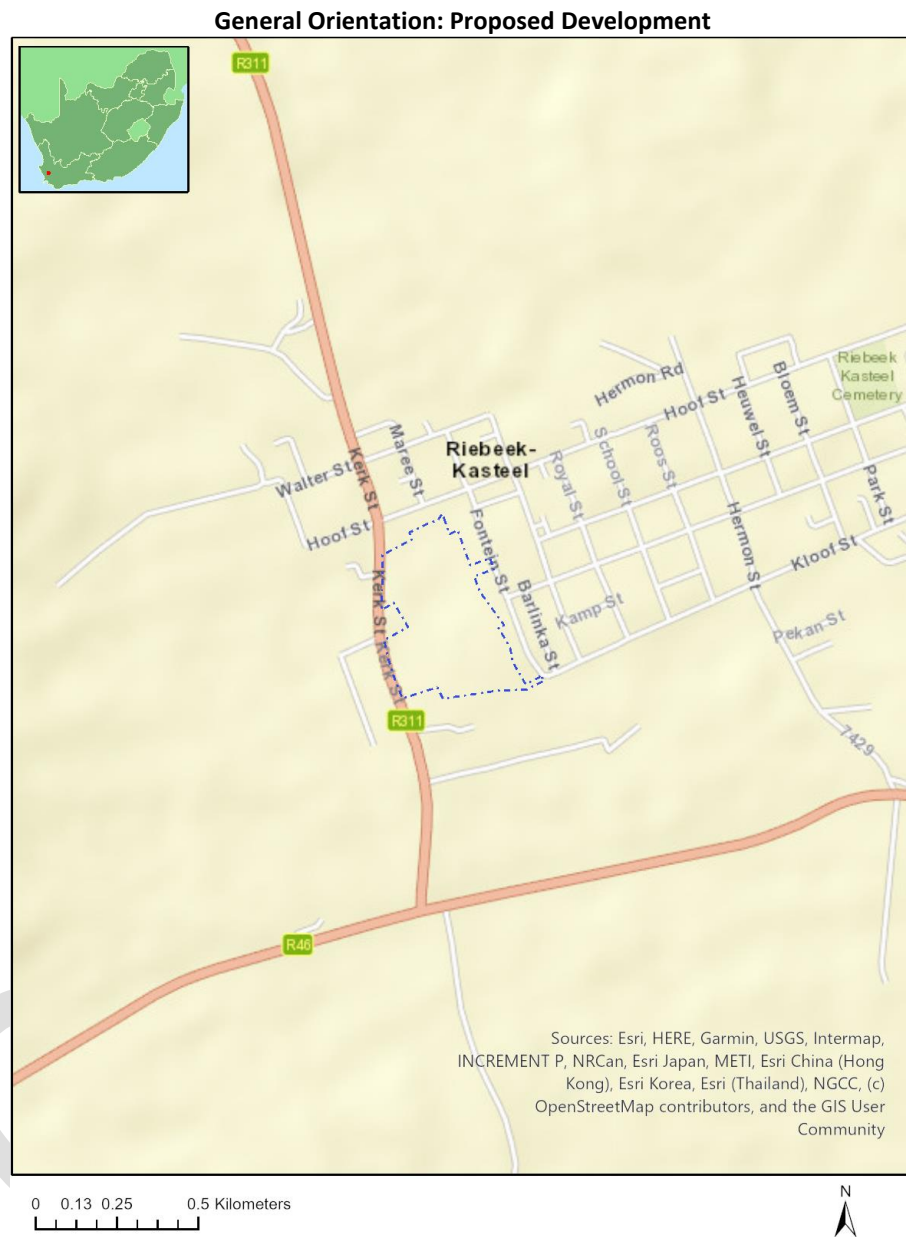
Application Category: Transformation of land | Indigenous vegetation

Table of Contents

Proposed Project Location	3
Orientation map 1: General location	3
Map of proposed site and relevant area(s)	4
Cadastral details of the proposed site	4
Wind and Solar developments with an approved Environmental Authorisation or applications under consideration within 30 km of the proposed area	4
Environmental Management Frameworks relevant to the application	5
Environmental screening results and assessment outcomes	5
Relevant development incentives, restrictions, exclusions or prohibitions	5
Proposed Development Area Environmental Sensitivity	5
Specialist assessments identified	6
Results of the environmental sensitivity of the proposed area	7
MAP OF RELATIVE AGRICULTURE THEME SENSITIVITY	7
MAP OF RELATIVE ANIMAL SPECIES THEME SENSITIVITY	8
MAP OF RELATIVE AQUATIC BIODIVERSITY THEME SENSITIVITY	9
MAP OF RELATIVE ARCHAEOLOGICAL AND CULTURAL HERITAGE THEME SENSITIVITY	10
MAP OF RELATIVE CIVIL AVIATION THEME SENSITIVITY	11
MAP OF RELATIVE DEFENCE THEME SENSITIVITY	12
MAP OF RELATIVE PALEONTOLOGY THEME SENSITIVITY	13
MAP OF RELATIVE PLANT SPECIES THEME SENSITIVITY	14
MAP OF RELATIVE TERRESTRIAL BIODIVERSITY THEME SENSITIVITY	17

Proposed Project Location

Orientation map 1: General location



Map of proposed site and relevant area(s)



Cadastral details of the proposed site

Property details:

No	Farm Name	Farm/ Erf No	Portion	Latitude	Longitude	Property Type
1	RIEBEEK KASTEEL	878	0	33°23'13.33S	18°53'37.68E	Erven

Development footprint¹ vertices:

No development footprint(s) specified.

Wind and Solar developments with an approved Environmental Authorisation or applications under consideration within 30 km of the proposed area

No	EIA Reference No	Classification	Status of application	Distance from proposed area (km)
1	12/12/20/2227	Wind	Approved	17.7
2	12/12/20/1859/AM3	Wind	Approved	19.9
3	14/12/16/3/3/2/961/AM3	Wind	Approved	25.5
4	14/12/16/3/3/2/322/AM2	Wind	Approved	18.6
5	12/12/20/2394	Solar PV	Approved	29.9

¹ "development footprint", means the area within the site on which the development will take place and includes all ancillary developments for example roads, power lines, boundary walls, paving etc. which require vegetation clearance or which will be disturbed and for which the application has been submitted.

6	14/12/16/3/3/2/961	Wind	Approved	25.5
7	14/12/16/3/3/2/2105	Wind	Approved	15.5
8	12/12/20/1859	Wind	Approved	19.9
9	14/12/16/3/3/2/961/AM1	Wind	Approved	25.5
10	12/12/20/2394/AM1	Solar PV	Approved	29.9
11	14/12/16/3/3/2/322	Wind	Approved	19.8
12	14/12/16/3/3/322	Wind	Approved	19.8
13	12/12/20/2400/AM2	Solar PV	Approved	5
14	12/12/20/2400	Solar PV	Approved	5

Environmental Management Frameworks relevant to the application

No intersections with EMF areas found.

Environmental screening results and assessment outcomes

The following sections contain a summary of any development incentives, restrictions, exclusions or prohibitions that apply to the proposed development site as well as the most environmental sensitive features on the site based on the site sensitivity screening results for the application classification that was selected. The application classification selected for this report is:

Transformation of land | Indigenous vegetation.

Relevant development incentives, restrictions, exclusions or prohibitions

The following development incentives, restrictions, exclusions or prohibitions and their implications that apply to this site are indicated below.

Incentive, restriction or prohibition	Implication
Strategic Transmission Corridor-Central corridor	https://screening.environment.gov.za/ScreeningDownloads/DevelopmentZones/Combined_EGI.pdf
Strategic Gas Pipeline Corridors-Phase 1a & 1b: Saldanha to Ankerlig and Saldanha to Mossel Bay	https://screening.environment.gov.za/ScreeningDownloads/DevelopmentZones/Combined_GAS.pdf

Proposed Development Area Environmental Sensitivity

The following summary of the development site environmental sensitivities is identified. Only the highest environmental sensitivity is indicated. The footprint environmental sensitivities for the proposed development footprint as identified, are indicative only and must be verified on site by a suitably qualified person before the specialist assessments identified below can be confirmed.

Theme	Very High sensitivity	High sensitivity	Medium sensitivity	Low sensitivity
Agriculture Theme	X			
Animal Species Theme		X		
Aquatic Biodiversity Theme	X			
Archaeological and Cultural	X			

Heritage Theme				
Civil Aviation Theme		X		
Defence Theme				X
Paleontology Theme				X
Plant Species Theme			X	
Terrestrial Biodiversity Theme	X			

Specialist assessments identified

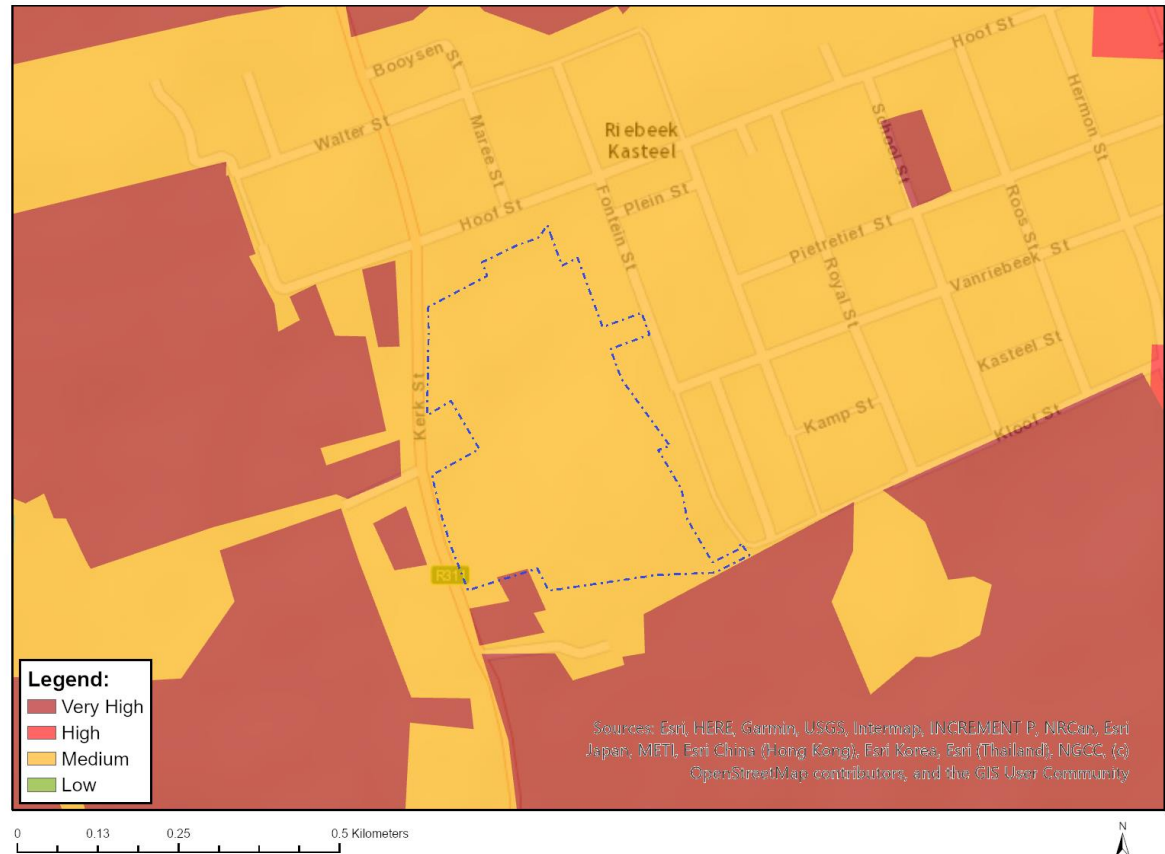
Based on the selected classification, and the known impacts associated with the proposed development, the following list of specialist assessments have been identified for inclusion in the assessment report. It is the responsibility of the EAP to confirm this list and to motivate in the assessment report, the reason for not including any of the identified specialist study including the provision of photographic evidence of the site situation.

No	Specialist assessment	Assessment Protocol
1	Landscape/Visual Impact Assessment	https://screening.environment.gov.za/ScreeningDownloads/AssessmentProtocols/Gazetted_General_Requirement_Assessment_Protocols.pdf
2	Archaeological and Cultural Heritage Impact Assessment	https://screening.environment.gov.za/ScreeningDownloads/AssessmentProtocols/Gazetted_General_Requirement_Assessment_Protocols.pdf
3	Palaeontology Impact Assessment	https://screening.environment.gov.za/ScreeningDownloads/AssessmentProtocols/Gazetted_General_Requirement_Assessment_Protocols.pdf
4	Terrestrial Biodiversity Impact Assessment	https://screening.environment.gov.za/ScreeningDownloads/AssessmentProtocols/Gazetted_Terrestrial_Biodiversity_Assessment_Protocols.pdf
5	Aquatic Biodiversity Impact Assessment	https://screening.environment.gov.za/ScreeningDownloads/AssessmentProtocols/Gazetted_Aquatic_Biodiversity_Assessment_Protocols.pdf
6	Socio-Economic Assessment	https://screening.environment.gov.za/ScreeningDownloads/AssessmentProtocols/Gazetted_General_Requirement_Assessment_Protocols.pdf
7	Plant Species Assessment	https://screening.environment.gov.za/ScreeningDownloads/AssessmentProtocols/Gazetted_Plant_Species_Assessment_Protocols.pdf
8	Animal Species Assessment	https://screening.environment.gov.za/ScreeningDownloads/AssessmentProtocols/Gazetted_Animal_Species_Assessment_Protocols.pdf

Results of the environmental sensitivity of the proposed area.

The following section represents the results of the screening for environmental sensitivity of the proposed site for relevant environmental themes associated with the project classification. It is the duty of the EAP to ensure that the environmental themes provided by the screening tool are comprehensive and complete for the project. Refer to the disclaimer.

MAP OF RELATIVE AGRICULTURE THEME SENSITIVITY

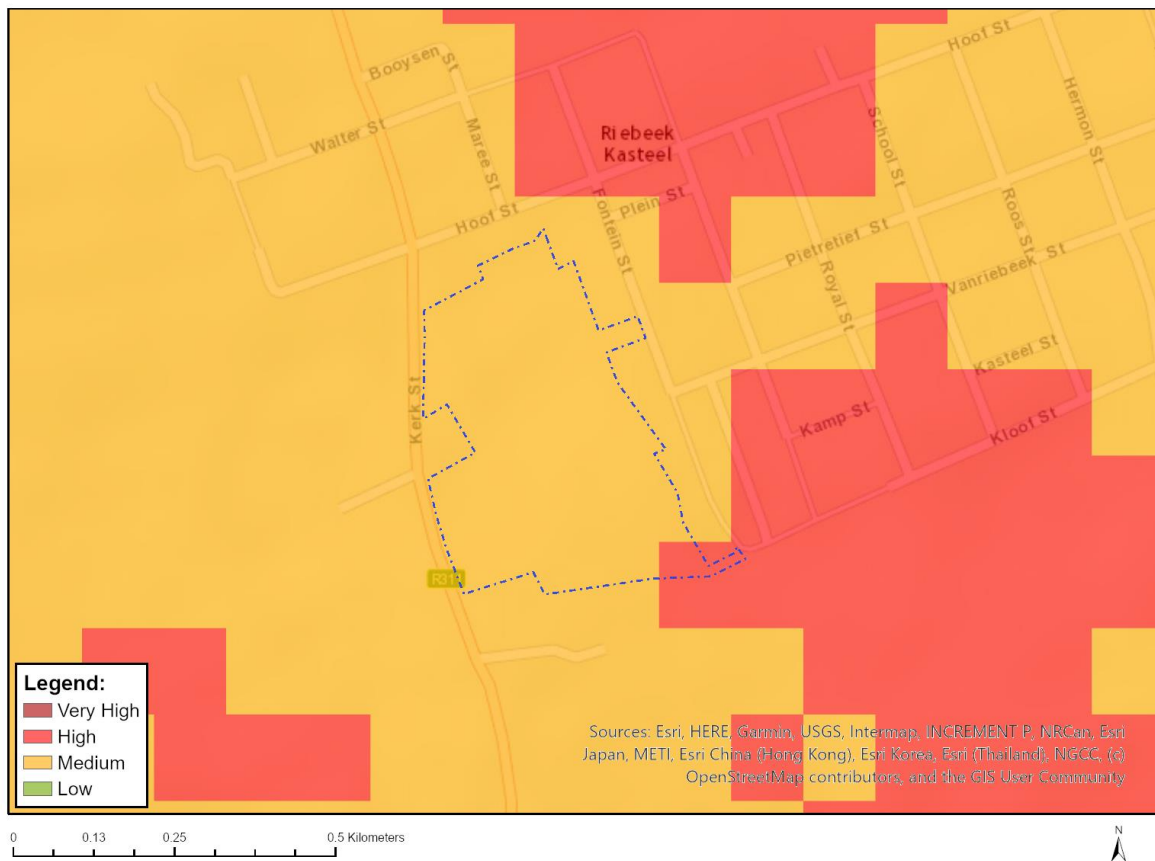


Very High sensitivity	High sensitivity	Medium sensitivity	Low sensitivity
X			

Sensitivity Features:

Sensitivity	Feature(s)
Medium	Land capability;06. Low-Moderate/07. Low-Moderate/08. Moderate
Very High	Viticulture;Land capability;06. Low-Moderate/07. Low-Moderate/08. Moderate

MAP OF RELATIVE ANIMAL SPECIES THEME SENSITIVITY



Where only a sensitive plant unique number or sensitive animal unique number is provided in the screening report and an assessment is required, the environmental assessment practitioner (EAP) or specialist is required to email SANBI at eiadatarequests@sanbi.org.za listing all sensitive species with their unique identifiers for which information is required. The name has been withheld as the species may be prone to illegal harvesting and must be protected. SANBI will release the actual species name after the details of the EAP or specialist have been documented.

Very High sensitivity	High sensitivity	Medium sensitivity	Low sensitivity
	X		

Sensitivity Features:

Sensitivity	Feature(s)
High	Aves-Pelecanus onocrotalus
Medium	Invertebrate-Conocephalus peringueyi
Medium	Invertebrate-Brinckiella aptera
Medium	Invertebrate-Aneuryphymus montanus

MAP OF RELATIVE AQUATIC BIODIVERSITY THEME SENSITIVITY



Very High sensitivity	High sensitivity	Medium sensitivity	Low sensitivity
X			

Sensitivity Features:

Sensitivity	Feature(s)
Very High	SWSA (SW) _ Boland

MAP OF RELATIVE ARCHAEOLOGICAL AND CULTURAL HERITAGE THEME SENSITIVITY



Very High sensitivity	High sensitivity	Medium sensitivity	Low sensitivity
X			

Sensitivity Features:

Sensitivity	Feature(s)
Very High	Within 2km of a Grade II Heritage site

MAP OF RELATIVE CIVIL AVIATION THEME SENSITIVITY



Very High sensitivity	High sensitivity	Medium sensitivity	Low sensitivity
	X		

Sensitivity Features:

Sensitivity	Feature(s)
High	Within 8 km of other civil aviation aerodrome
High	Dangerous and restricted airspace as demarcated

MAP OF RELATIVE DEFENCE THEME SENSITIVITY



Very High sensitivity	High sensitivity	Medium sensitivity	Low sensitivity
			X

Sensitivity Features:

Sensitivity	Feature(s)
Low	Low Sensitivity

MAP OF RELATIVE PALEONTOLOGY THEME SENSITIVITY

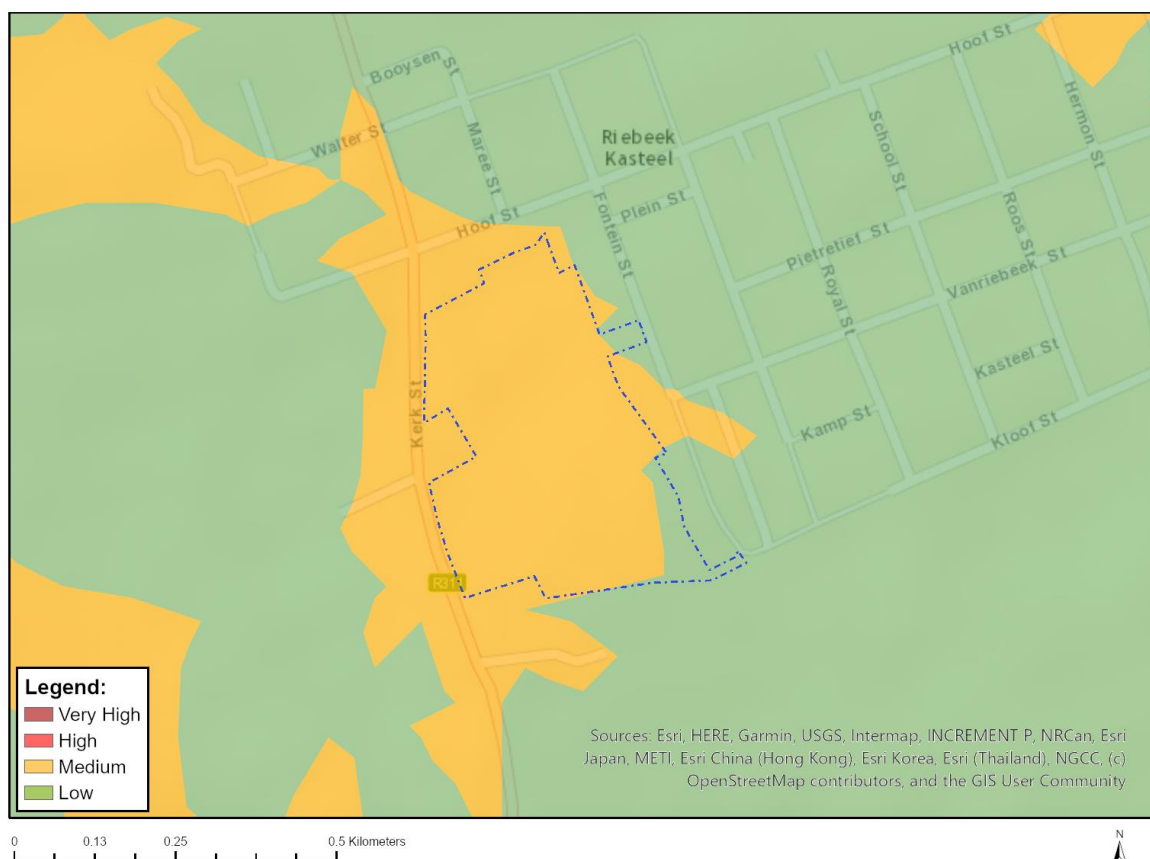


Very High sensitivity	High sensitivity	Medium sensitivity	Low sensitivity
			X

Sensitivity Features:

Sensitivity	Feature(s)
Low	Features with a Low paleontological sensitivity

MAP OF RELATIVE PLANT SPECIES THEME SENSITIVITY



Where only a sensitive plant unique number or sensitive animal unique number is provided in the screening report and an assessment is required, the environmental assessment practitioner (EAP) or specialist is required to email SANBI at eiadatarequests@sanbi.org.za listing all sensitive species with their unique identifiers for which information is required. The name has been withheld as the species may be prone to illegal harvesting and must be protected. SANBI will release the actual species name after the details of the EAP or specialist have been documented.

Very High sensitivity	High sensitivity	Medium sensitivity	Low sensitivity
		X	

Sensitivity Features:

Sensitivity	Feature(s)
Low	Low Sensitivity
Medium	Lampranthus dilutus
Medium	Lampranthus filicaulis
Medium	Lampranthus leptaleon
Medium	Lampranthus peacockiae
Medium	Lampranthus scaber
Medium	Lampranthus sociorum
Medium	Lampranthus spiniformis
Medium	Sensitive species 1059
Medium	Antimima mucronata
Medium	Antimima aristulata
Medium	Erepsia patula
Medium	Erepsia ramosa

Medium	<i>Ruschia diversifolia</i>
Medium	<i>Drosanthemum hispidifolium</i>
Medium	<i>Cephalophyllum parviflorum</i>
Medium	<i>Xiphotheca lanceolata</i>
Medium	<i>Indigofera psoraloides</i>
Medium	<i>Aspalathus aculeata</i>
Medium	<i>Aspalathus araneosa</i>
Medium	<i>Aspalathus muraltioides</i>
Medium	<i>Aspalathus puberula</i>
Medium	<i>Aspalathus varians</i>
Medium	<i>Aspalathus wurmbeana</i>
Medium	<i>Rafnia lancea</i>
Medium	<i>Lebeckia plukenetiana</i>
Medium	<i>Podalyria microphylla</i>
Medium	<i>Leucadendron corymbosum</i>
Medium	<i>Leucadendron lanigerum</i> var. <i>lanigerum</i>
Medium	<i>Leucadendron stellare</i>
Medium	<i>Protea burchellii</i>
Medium	<i>Serruria incrassata</i>
Medium	<i>Merciera tetraloba</i>
Medium	<i>Lobostemon capitatus</i>
Medium	<i>Echiostachys incanus</i>
Medium	<i>Aristea lugens</i>
Medium	<i>Hesperantha spicata</i> subsp. <i>spicata</i>
Medium	Sensitive species 631
Medium	Sensitive species 331
Medium	Sensitive species 533
Medium	<i>Geissorhiza furva</i>
Medium	<i>Geissorhiza radians</i>
Medium	<i>Geissorhiza setacea</i>
Medium	<i>Geissorhiza tulbaghensis</i>
Medium	<i>Geissorhiza erosa</i>
Medium	<i>Sparaxis grandiflora</i> subsp. <i>grandiflora</i>
Medium	<i>Thereianthus bulbiferus</i>
Medium	<i>Ixia abbreviata</i>
Medium	<i>Ixia erubescens</i>
Medium	<i>Ixia rouxii</i>
Medium	Sensitive species 560
Medium	Sensitive species 572
Medium	Sensitive species 1
Medium	Sensitive species 1140
Medium	Sensitive species 995
Medium	Sensitive species 863
Medium	<i>Pauridia alba</i>
Medium	<i>Pauridia pygmaea</i>
Medium	<i>Monopsis variifolia</i>
Medium	<i>Oxalis natans</i>
Medium	<i>Oxalis variifolia</i>
Medium	<i>Hermannia rugosa</i>
Medium	Sensitive species 222
Medium	Sensitive species 444
Medium	Sensitive species 1240
Medium	Sensitive species 18
Medium	Sensitive species 259
Medium	Sensitive species 478
Medium	Sensitive species 756
Medium	<i>Isoetes capensis</i>
Medium	<i>Hypodiscus rugosus</i>
Medium	<i>Restio duthieae</i>
Medium	<i>Anisodonteia biflora</i>

Medium	Sensitive species 266
Medium	Pterygodium inversum
Medium	Metalasia octoflora
Medium	Senecio cadiscus
Medium	Athanasia crenata
Medium	Sensitive species 1042
Medium	Agathosma latipetala
Medium	Muraltia macropetala
Medium	Sensitive species 1218
Medium	Sensitive species 1135
Medium	Sensitive species 382
Medium	Sensitive species 616
Medium	Sensitive species 449
Medium	Wurmbea inusta
Medium	Phylica stenopetala var. stenopetala
Medium	Phylica strigulosa
Medium	Phylica thunbergiana
Medium	Ezoloba macrocarpa
Medium	Codonorhiza azurea
Medium	Lampranthus debilis
Medium	Lampranthus glaucus
Medium	Drosanthemum striatum
Medium	Xiphotheca reflexa
Medium	Psoralea alata
Medium	Aspalathus recurva
Medium	Aponogeton fugax
Medium	Sensitive species 593
Medium	Sensitive species 335
Medium	Sensitive species 599
Medium	Restio rigorus
Medium	Cotula pusilla
Medium	Perdicium capense
Medium	Sensitive species 1225

MAP OF RELATIVE TERRESTRIAL BIODIVERSITY THEME SENSITIVITY



Very High sensitivity	High sensitivity	Medium sensitivity	Low sensitivity
X			

Sensitivity Features:

Sensitivity	Feature(s)
Very High	ESA 2: Restore from other land use
Very High	CBA 1: Terrestrial
Very High	SWSA (SW) <u>Boland</u>
Very High	CR_Swartland Shale Renosterveld