



NICK HELME BOTANICAL SURVEYS

PO Box 22652 Scarborough 7975

Ph: 021 780 1420 cell: 082 82 38350 email: botaneek@iafrica.com

Pri.Sci.Nat # 400045/08

1 May 2025

Lornay Environmental

Hermanus

ATT: Michelle Naylor

Dear Michelle

Addendum to Specialist Botanical Assessment for proposed new cultivation on Erf 1995 McGregor, Western Cape.

Subsequent to my Impact Assessment for this project, dated 25 March 2025, a further development alternative has been proposed as the new preferred alternative – Alternative 3 (see Figure 1). The total development area has been reduced to 2.0ha, with Block 1 being 1.5ha, and Block 2 being 0.5ha, compared with a 3.6ha total for the applicant's previously preferred alternative 1 (Block 1 1.7ha and Block 2 being 2.1ha).

The updated assessment table for the construction phase botanical impacts is here included as Table 1. The operational phase botanical impacts remain the same for all development alternatives (Low to Medium negative impact).

Due to its significantly smaller footprint Alternative 3 is now one of the preferred development alternatives, with a lower construction phase botanical impact than the applicants previously preferred Alternative 1, and similar to that of Alternative 2. However, the impact cannot be rated as Low negative, as 2.0ha of natural vegetation will still be lost. Thus from a botanical perspective Alternatives 2 and 3 are the equally preferred development alternatives for this site.

Alternatives 2 and 3 are not likely to impact on any plant SoCC, but Alternative 1 is likely to result in loss of about 10% of the site population of the Near Threatened vygie *Brianhuntheleya intrusa* (in Block 2 of Alternative 1).

Mitigation as per my March 2025 report still applies, with bullet point 3 modified as below, to include Alternative 3:

- Search and Rescue of all translocatable bulbs and succulents (at least 15 species) from within the development footprints must be undertaken prior to any site development. In addition, for Alternative 1 & 3, any specimens of the Near Threatened vygie *Brianhuntleya intrusa* (absent from Alt 3 footprint), the dwarf succulent *Tulista pumila* and the unnamed purple flowered *Anisodonteia* (seen only in southern part of Block 2) within the authorised footprint must be rescued (none of these is in the Alternative 2 footprint). This must be undertaken by a qualified Search and Rescue contractor approved by the botanist. Some of the material should be used to help rehabilitate the previously disturbed northeastern part of the site (if not developed), and the remainder can be used elsewhere (at contractor and botanist's discretion).

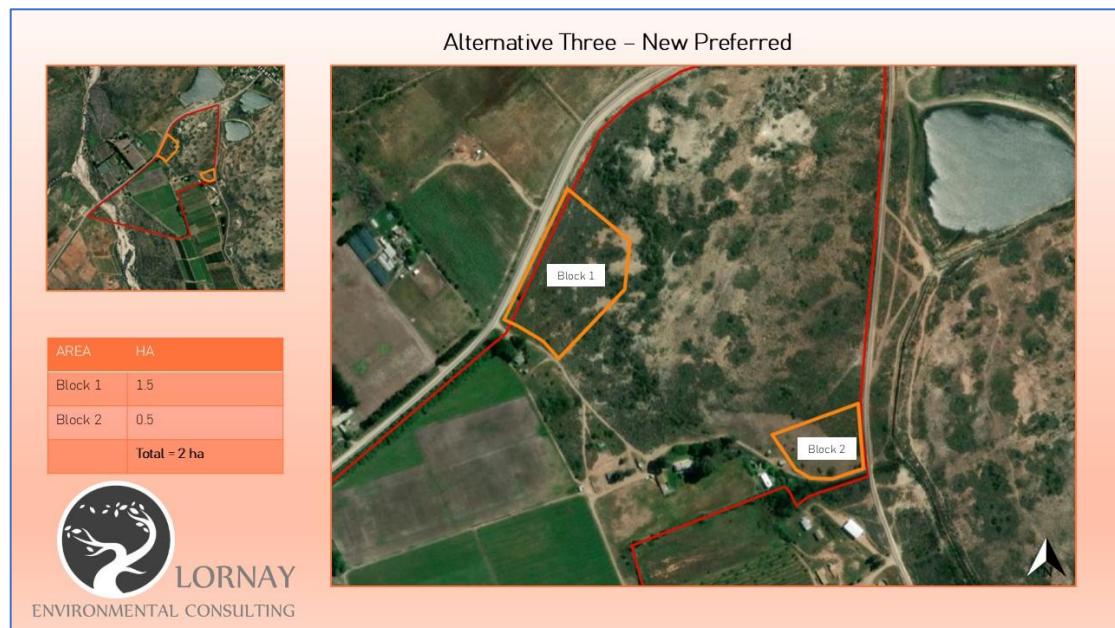


Figure 1: Map of the proposed Alternative 3 development layout.

<u>Alternative</u>	<u>Extent of impact</u>	<u>Duration of impact</u>	<u>Intensity</u>	<u>Probability of occurrence</u>	<u>Degree of confidence</u>	<u>Significance (before and after mitigation)</u>
Alternative 1	Local	Permanent	High	Definite	High	Medium negative
Alternative 2	Local	Permanent	High	Definite	High	Low - Medium negative
Alternative 3	Local	Permanent	High	Definite	High	Low - Medium negative
No Go alternative	Local	Unknown; possibly temporary	Low (but unknown)	Low	Medium	Neutral

Table 1: Impact table for Construction Phase botanical impacts associated with the proposed cultivation alternatives, and the No Go. Impacts include loss of natural vegetation, plus loss of portion of local sub-population of at least one plant Species of Conservation Concern (SoCC; Alternative 1 only).

Yours sincerely



Nick Helme