

**SCREENING REPORT FOR AN ENVIRONMENTAL AUTHORIZATION AS
REQUIRED BY THE 2014 EIA REGULATIONS – PROPOSED SITE
ENVIRONMENTAL SENSITIVITY**

EIA Reference number: Pending

Project name: 126 OF 559

Project title: Single res dwelling

Date screening report generated: 31/10/2022 11:33:22

Applicant: G FOURIE

Compiler: LORNAY ENV CONSULTING

Compiler signature:

.....

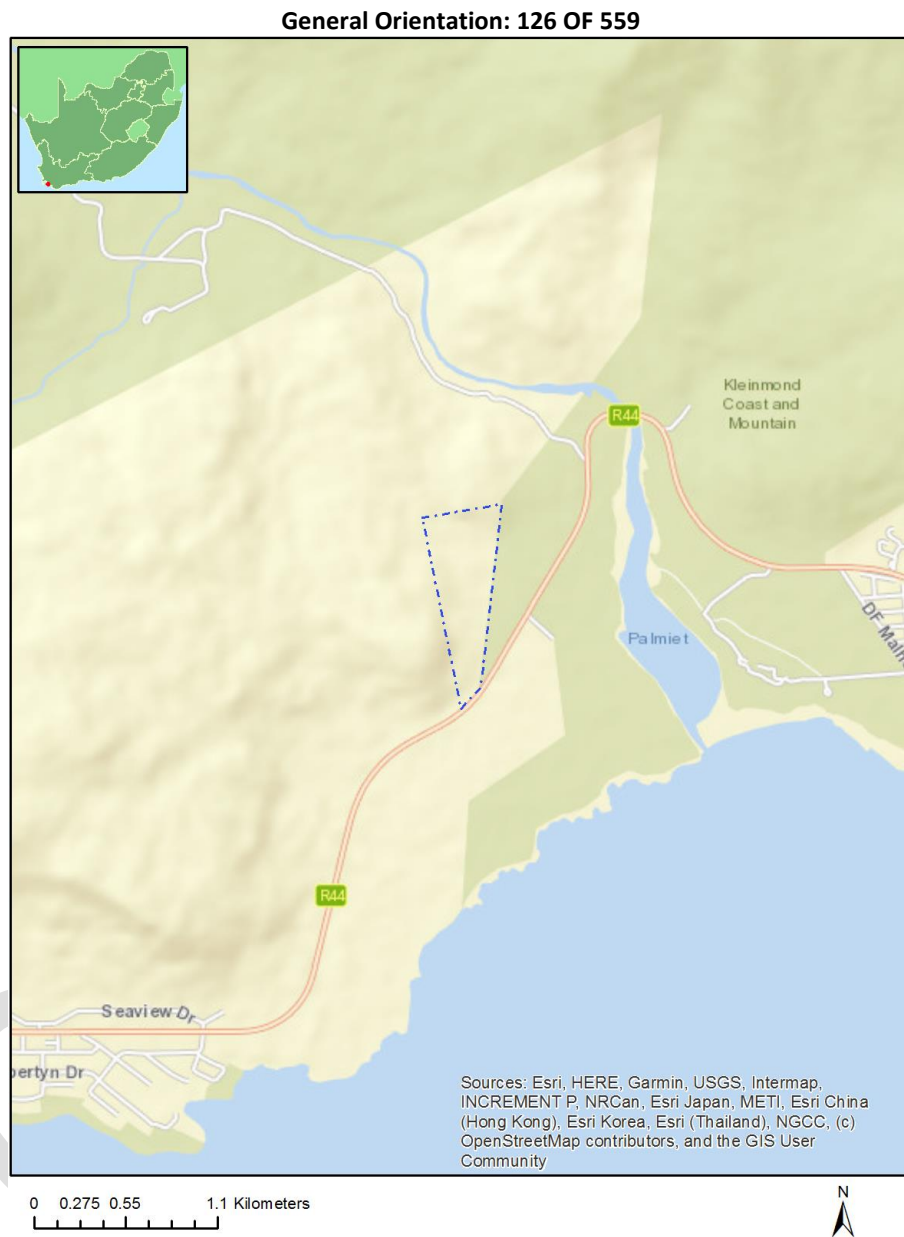
Application Category: Transformation of land | Indigenous vegetation

Table of Contents

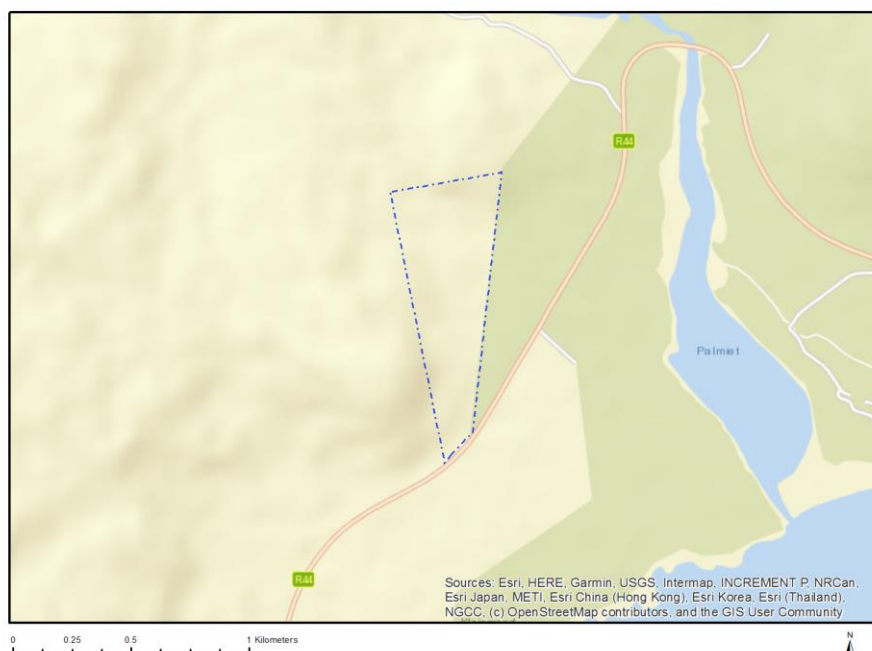
Proposed Project Location	3
Orientation map 1: General location	3
Map of proposed site and relevant area(s)	4
Cadastral details of the proposed site	4
Wind and Solar developments with an approved Environmental Authorisation or applications under consideration within 30 km of the proposed area	4
Environmental Management Frameworks relevant to the application	4
Environmental screening results and assessment outcomes	5
Relevant development incentives, restrictions, exclusions or prohibitions	5
Map indicating proposed development footprint within applicable development incentive, restriction, exclusion or prohibition zones	6
Proposed Development Area Environmental Sensitivity	6
Specialist assessments identified	7
Results of the environmental sensitivity of the proposed area	9
MAP OF RELATIVE AGRICULTURE THEME SENSITIVITY	9
MAP OF RELATIVE ANIMAL SPECIES THEME SENSITIVITY	10
MAP OF RELATIVE AQUATIC BIODIVERSITY THEME SENSITIVITY	11
MAP OF RELATIVE ARCHAEOLOGICAL AND CULTURAL HERITAGE THEME SENSITIVITY	12
MAP OF RELATIVE CIVIL AVIATION THEME SENSITIVITY	13
MAP OF RELATIVE DEFENCE THEME SENSITIVITY	14
MAP OF RELATIVE PALEONTOLOGY THEME SENSITIVITY	15
MAP OF RELATIVE PLANT SPECIES THEME SENSITIVITY	16
MAP OF RELATIVE TERRESTRIAL BIODIVERSITY THEME SENSITIVITY	20

Proposed Project Location

Orientation map 1: General location



Map of proposed site and relevant area(s)



Cadastral details of the proposed site

Property details:

No	Farm Name	Farm/ Erf No	Portion	Latitude	Longitude	Property Type
1		559	0	34°19'47.86S	18°58'10.47E	Farm
2		559	126	34°20'16.65S	18°58'53.48E	Farm Portion

Development footprint¹ vertices:

No development footprint(s) specified.

Wind and Solar developments with an approved Environmental Authorisation or applications under consideration within 30 km of the proposed area

No nearby wind or solar developments found.

Environmental Management Frameworks relevant to the application

No intersections with EMF areas found.

¹ "development footprint", means the area within the site on which the development will take place and includes all ancillary developments for example roads, power lines, boundary walls, paving etc. which require vegetation clearance or which will be disturbed and for which the application has been submitted.

Environmental screening results and assessment outcomes

The following sections contain a summary of any development incentives, restrictions, exclusions or prohibitions that apply to the proposed development site as well as the most environmental sensitive features on the site based on the site sensitivity screening results for the application classification that was selected. The application classification selected for this report is:

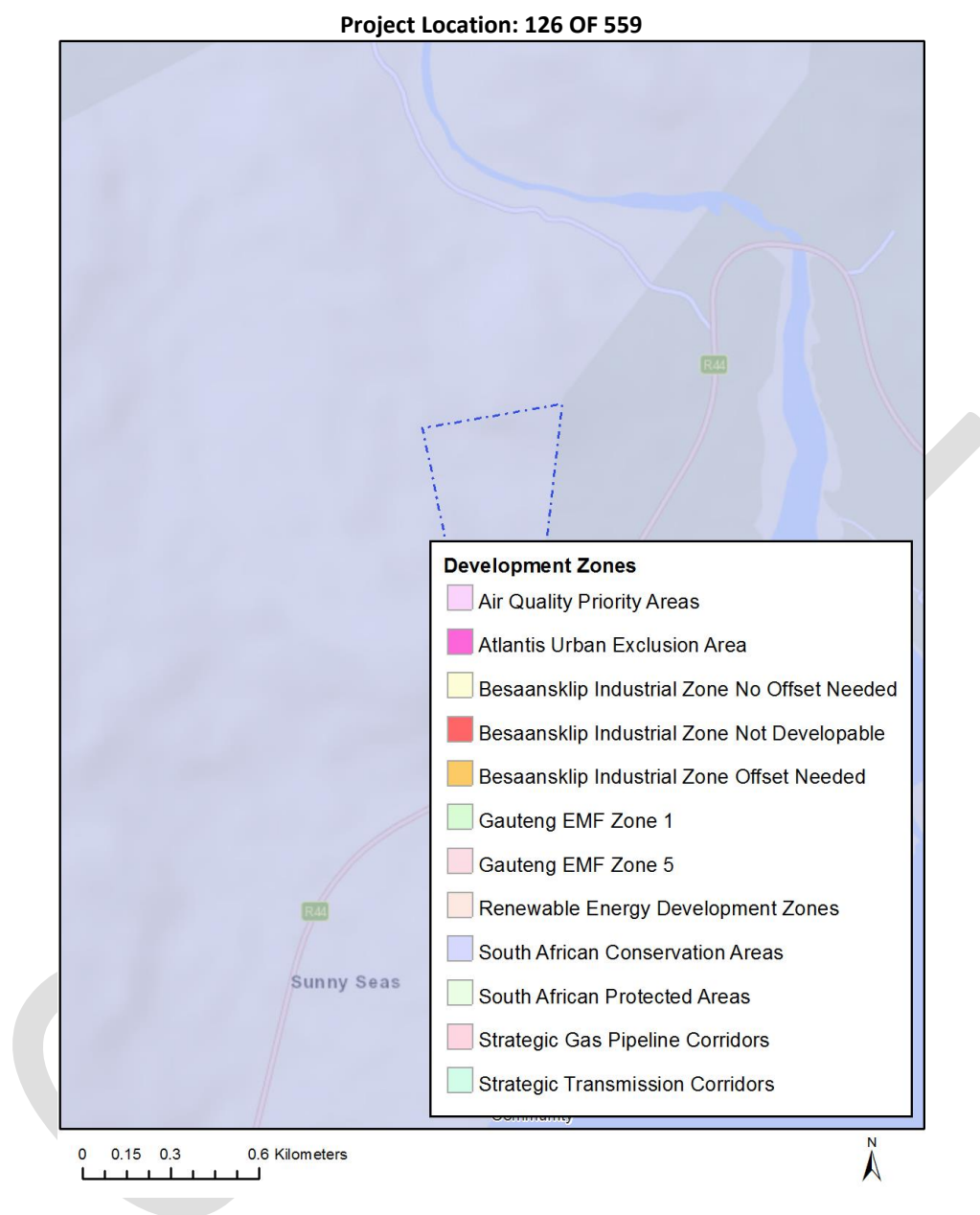
Transformation of land | Indigenous vegetation.

Relevant development incentives, restrictions, exclusions or prohibitions

The following development incentives, restrictions, exclusions or prohibitions and their implications that apply to this site are indicated below.

Incentive, restriction or prohibition	Implication
South African Conservation Areas	https://screening.environment.gov.za/ScreeningDownloads/DevelopmentZones/SACAD_OR_2022_Q2_Metadata.pdf

Map indicating proposed development footprint within applicable development incentive, restriction, exclusion or prohibition zones



Proposed Development Area Environmental Sensitivity

The following summary of the development site environmental sensitivities is identified. Only the highest environmental sensitivity is indicated. The footprint environmental sensitivities for the proposed development footprint as identified, are indicative only and must be verified on site by a suitably qualified person before the specialist assessments identified below can be confirmed.

Theme	Very High sensitivity	High sensitivity	Medium sensitivity	Low sensitivity
Agriculture Theme			X	
Animal Species Theme		X		

Aquatic Biodiversity Theme	X			
Archaeological and Cultural Heritage Theme				X
Civil Aviation Theme				X
Defence Theme				X
Paleontology Theme		X		
Plant Species Theme		X		
Terrestrial Biodiversity Theme	X			

Specialist assessments identified

Based on the selected classification, and the environmental sensitivities of the proposed development footprint, the following list of specialist assessments have been identified for inclusion in the assessment report. It is the responsibility of the EAP to confirm this list and to motivate in the assessment report, the reason for not including any of the identified specialist study including the provision of photographic evidence of the site situation.

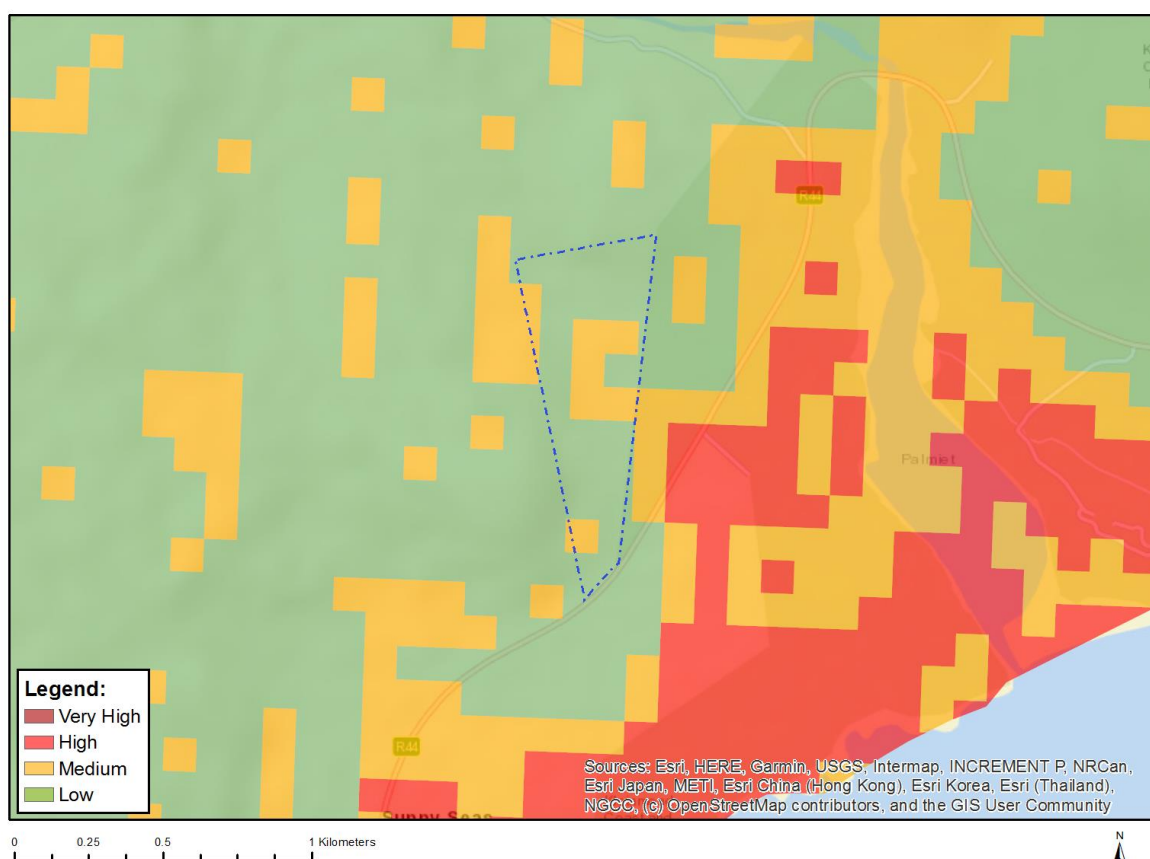
N o	Special ist assess ment	Assessment Protocol
1	Landscape/Visual Impact Assessment	https://screening.environment.gov.za/ScreeningDownloads/AssessmentProtocols/Gazetted_General_Requirement_Assessment_Protocols.pdf
2	Archaeological and Cultural Heritage Impact Assessment	https://screening.environment.gov.za/ScreeningDownloads/AssessmentProtocols/Gazetted_General_Requirement_Assessment_Protocols.pdf
3	Palaeontology Impact Assessment	https://screening.environment.gov.za/ScreeningDownloads/AssessmentProtocols/Gazetted_General_Requirement_Assessment_Protocols.pdf
4	Terrestrial Biodiversity Impact Assessment	https://screening.environment.gov.za/ScreeningDownloads/AssessmentProtocols/Gazetted_Terrestrial_Biodiversity_Assessment_Protocols.pdf
5	Aquatic Biodiversity Impact Assessment	https://screening.environment.gov.za/ScreeningDownloads/AssessmentProtocols/Gazetted_Aquatic_Biodiversity_Assessment_Protocols.pdf
6	Socio-Economic Assessment	https://screening.environment.gov.za/ScreeningDownloads/AssessmentProtocols/Gazetted_General_Requirement_Assessment_Protocols.pdf
7	Plant Species	https://screening.environment.gov.za/ScreeningDownloads/AssessmentProtocols/Gazetted_General_Requirement_Assessment_Protocols.pdf

	Assessment	/Gazetted Plant Species Assessment Protocols.pdf
8	Animal Species Assessment	https://screening.environment.gov.za/ScreeningDownloads/AssessmentProtocols/Gazetted Animal Species Assessment Protocols.pdf

Results of the environmental sensitivity of the proposed area.

The following section represents the results of the screening for environmental sensitivity of the proposed site for relevant environmental themes associated with the project classification. It is the duty of the EAP to ensure that the environmental themes provided by the screening tool are comprehensive and complete for the project. Refer to the disclaimer.

MAP OF RELATIVE AGRICULTURE THEME SENSITIVITY

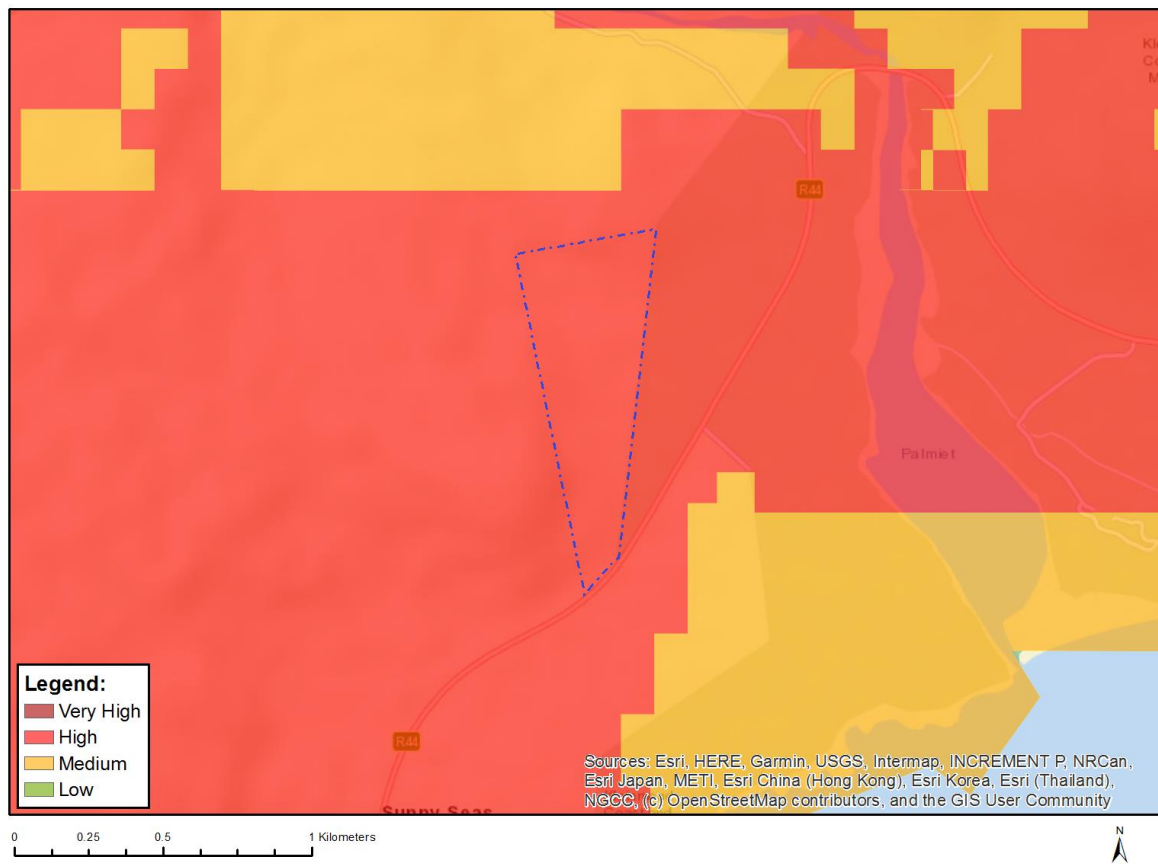


Very High sensitivity	High sensitivity	Medium sensitivity	Low sensitivity
		X	

Sensitivity Features:

Sensitivity	Feature(s)
Low	Land capability;01. Very low/02. Very low/03. Low-Very low/04. Low-Very low/05. Low
Medium	Land capability;06. Low-Moderate/07. Low-Moderate/08. Moderate

MAP OF RELATIVE ANIMAL SPECIES THEME SENSITIVITY



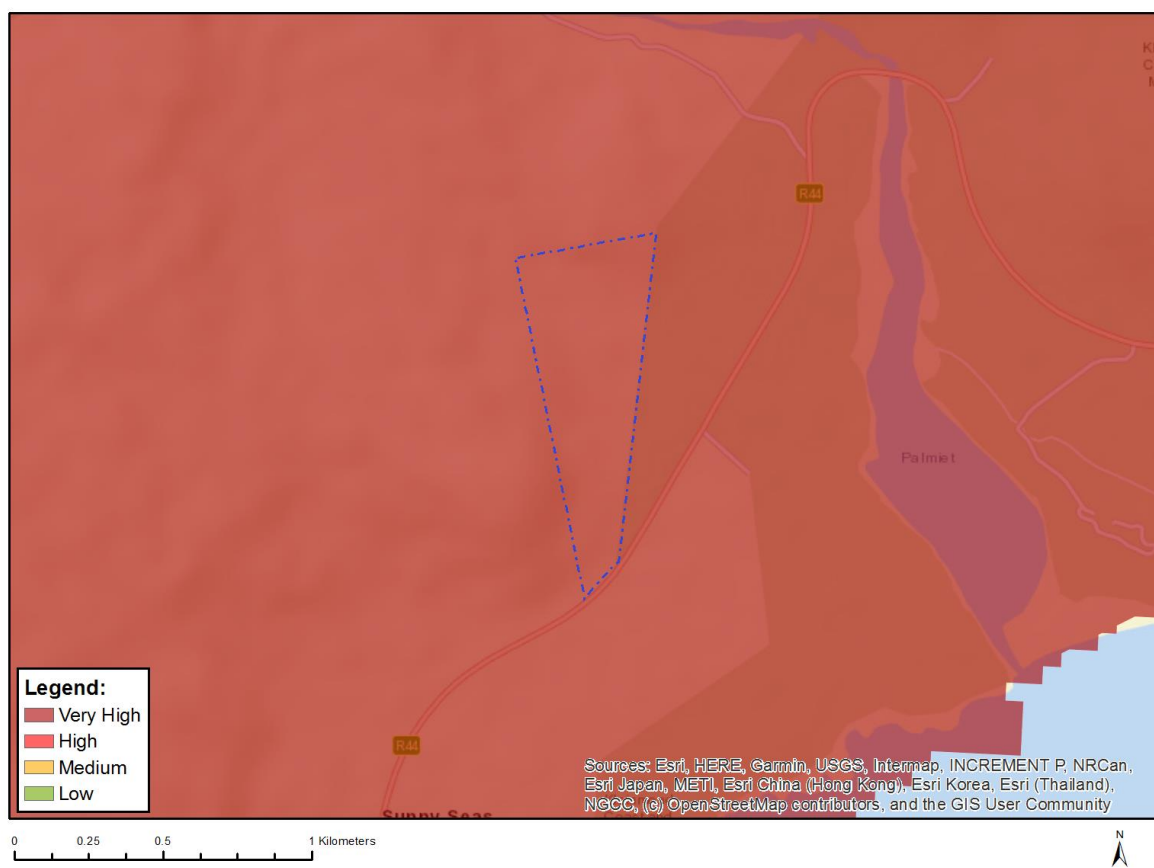
Where only a sensitive plant unique number or sensitive animal unique number is provided in the screening report and an assessment is required, the environmental assessment practitioner (EAP) or specialist is required to email SANBI at eiadatarequests@sanbi.org.za listing all sensitive species with their unique identifiers for which information is required. The name has been withheld as the species may be prone to illegal harvesting and must be protected. SANBI will release the actual species name after the details of the EAP or specialist have been documented.

Very High sensitivity	High sensitivity	Medium sensitivity	Low sensitivity
	X		

Sensitivity Features:

Sensitivity	Feature(s)
High	Aves-Circus ranivorus
High	Aves-Ciconia nigra
High	Aves-Falco biarmicus
High	Aves-Sarothrura affinis
High	Aves-Aquila verreauxii
Medium	Amphibia-Xenopus gilli
Medium	Aves-Circus maurus
Medium	Aves-Neotis denhami
Medium	Aves-Turnix hottentottus
Medium	Invertebrate-Aneuryphymus montanus

MAP OF RELATIVE AQUATIC BIODIVERSITY THEME SENSITIVITY



Very High sensitivity	High sensitivity	Medium sensitivity	Low sensitivity
X			

Sensitivity Features:

Sensitivity	Feature(s)
Very High	Aquatic CBAs
Very High	Strategic water source area
Very High	Wetlands and Estuaries
Very High	Freshwater ecosystem priority area quinary catchments

MAP OF RELATIVE ARCHAEOLOGICAL AND CULTURAL HERITAGE THEME SENSITIVITY

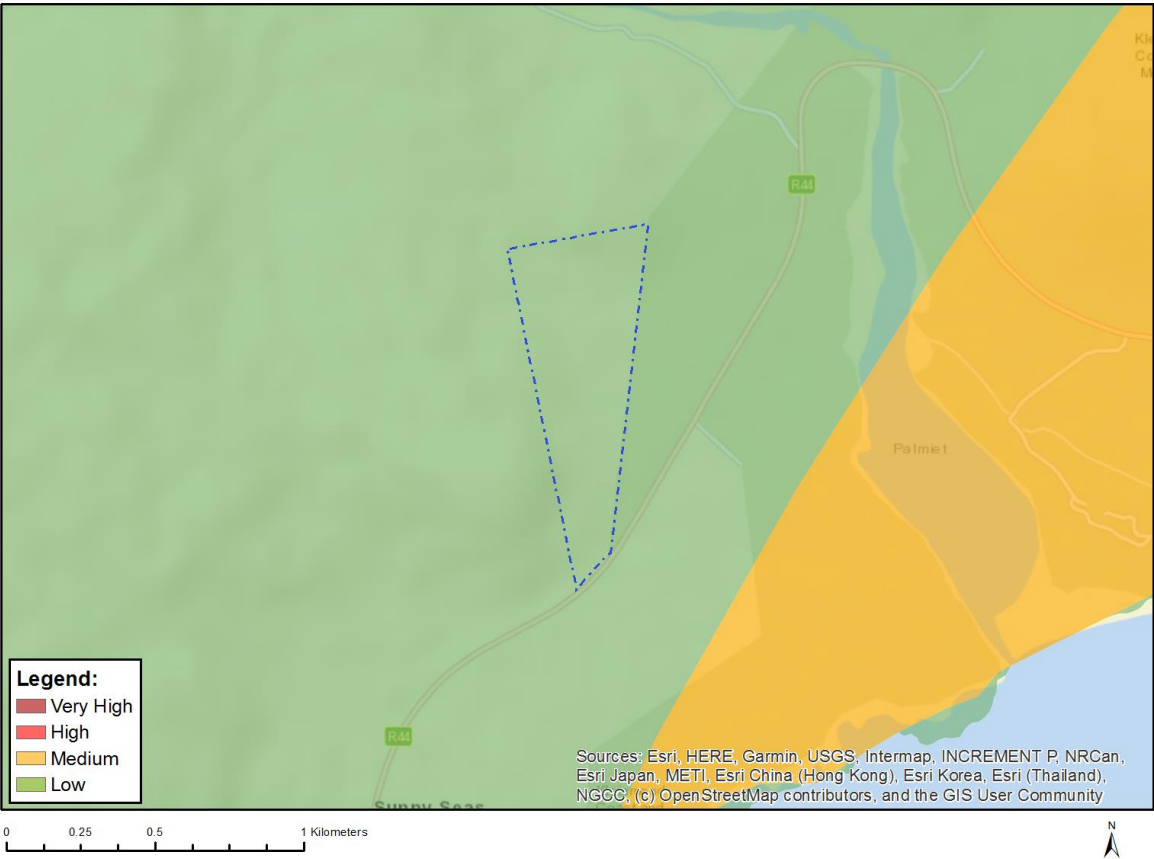


Very High sensitivity	High sensitivity	Medium sensitivity	Low sensitivity
			X

Sensitivity Features:

Sensitivity	Feature(s)
Low	Low sensitivity

MAP OF RELATIVE CIVIL AVIATION THEME SENSITIVITY



Very High sensitivity	High sensitivity	Medium sensitivity	Low sensitivity
			X

Sensitivity Features:

Sensitivity	Feature(s)
Low	Low sensitivity

MAP OF RELATIVE DEFENCE THEME SENSITIVITY

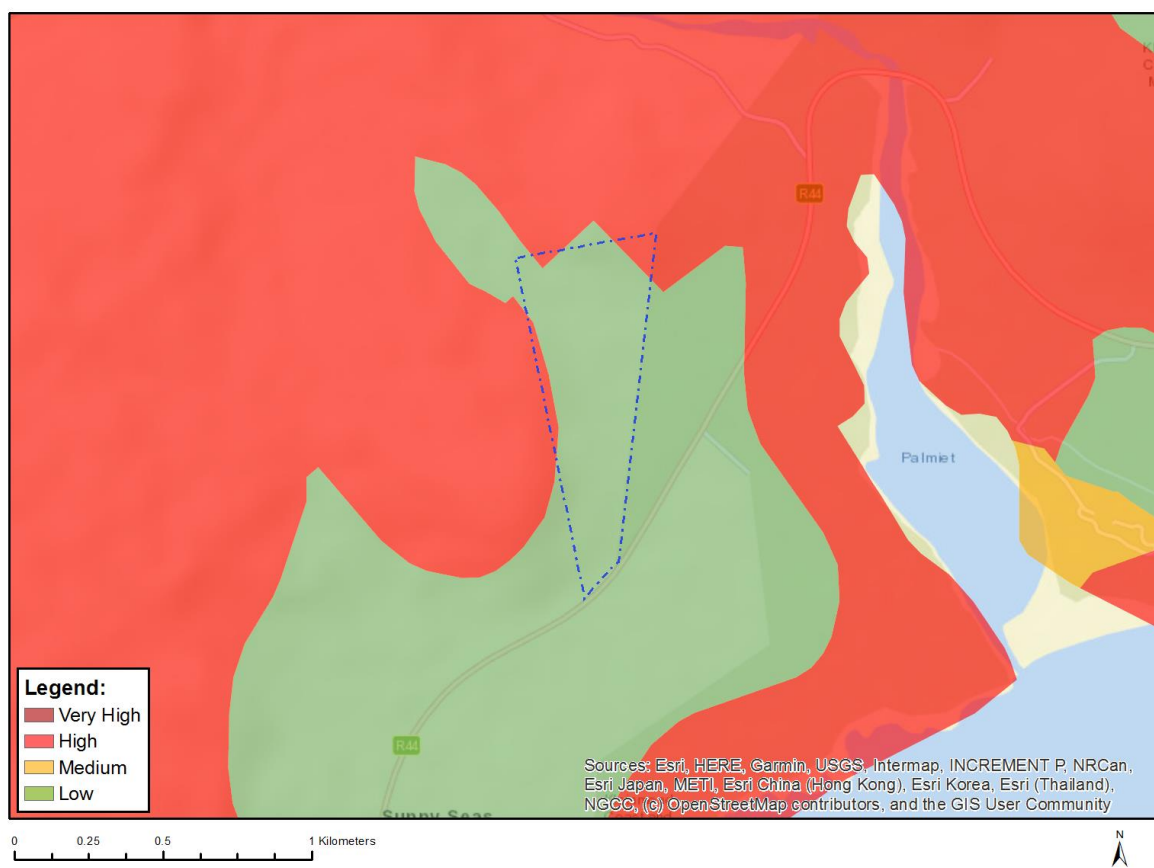


Very High sensitivity	High sensitivity	Medium sensitivity	Low sensitivity
			X

Sensitivity Features:

Sensitivity	Feature(s)
Low	Low Sensitivity

MAP OF RELATIVE PALEONTOLOGY THEME SENSITIVITY

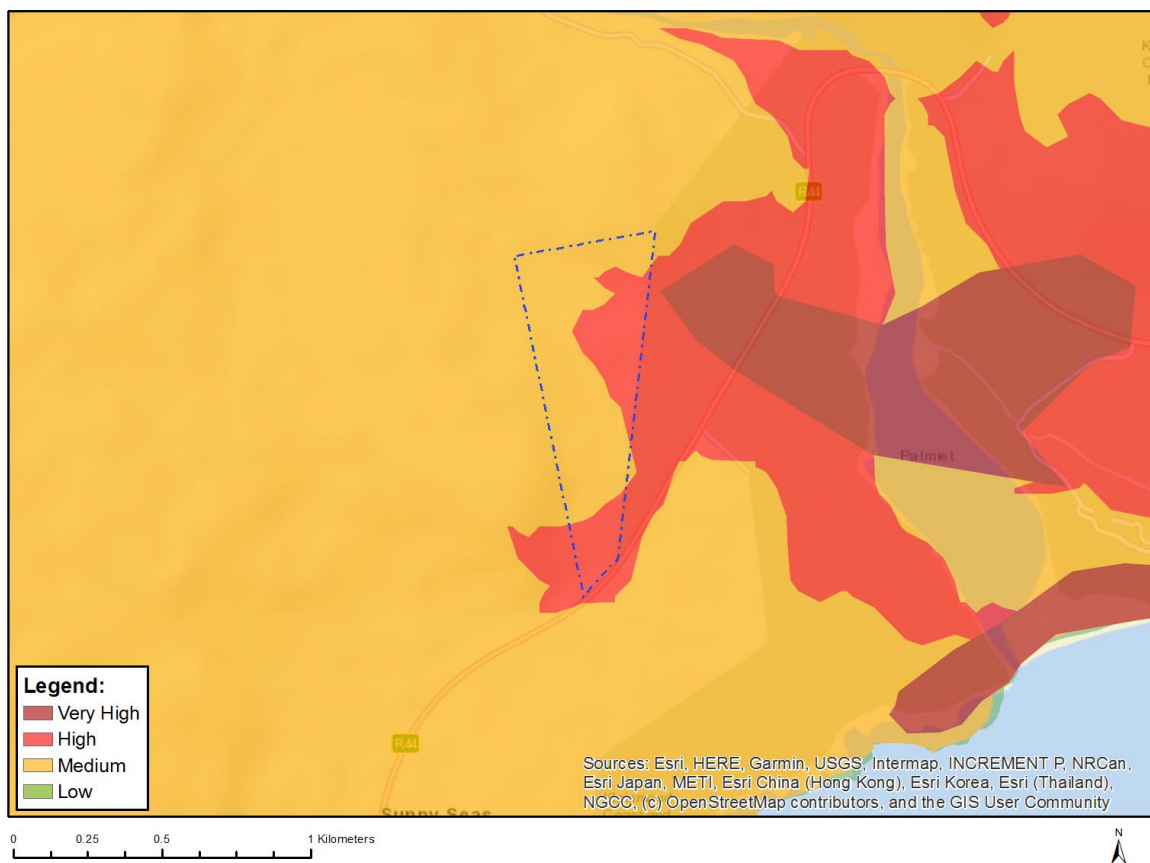


Very High sensitivity	High sensitivity	Medium sensitivity	Low sensitivity
	X		

Sensitivity Features:

Sensitivity	Feature(s)
High	Features with a High paleontological sensitivity
Low	Features with a Low paleontological sensitivity

MAP OF RELATIVE PLANT SPECIES THEME SENSITIVITY



Where only a sensitive plant unique number or sensitive animal unique number is provided in the screening report and an assessment is required, the environmental assessment practitioner (EAP) or specialist is required to email SANBI at eiadatarequests@sanbi.org.za listing all sensitive species with their unique identifiers for which information is required. The name has been withheld as the species may be prone to illegal harvesting and must be protected. SANBI will release the actual species name after the details of the EAP or specialist have been documented.

Very High sensitivity	High sensitivity	Medium sensitivity	Low sensitivity
	X		

Sensitivity Features:

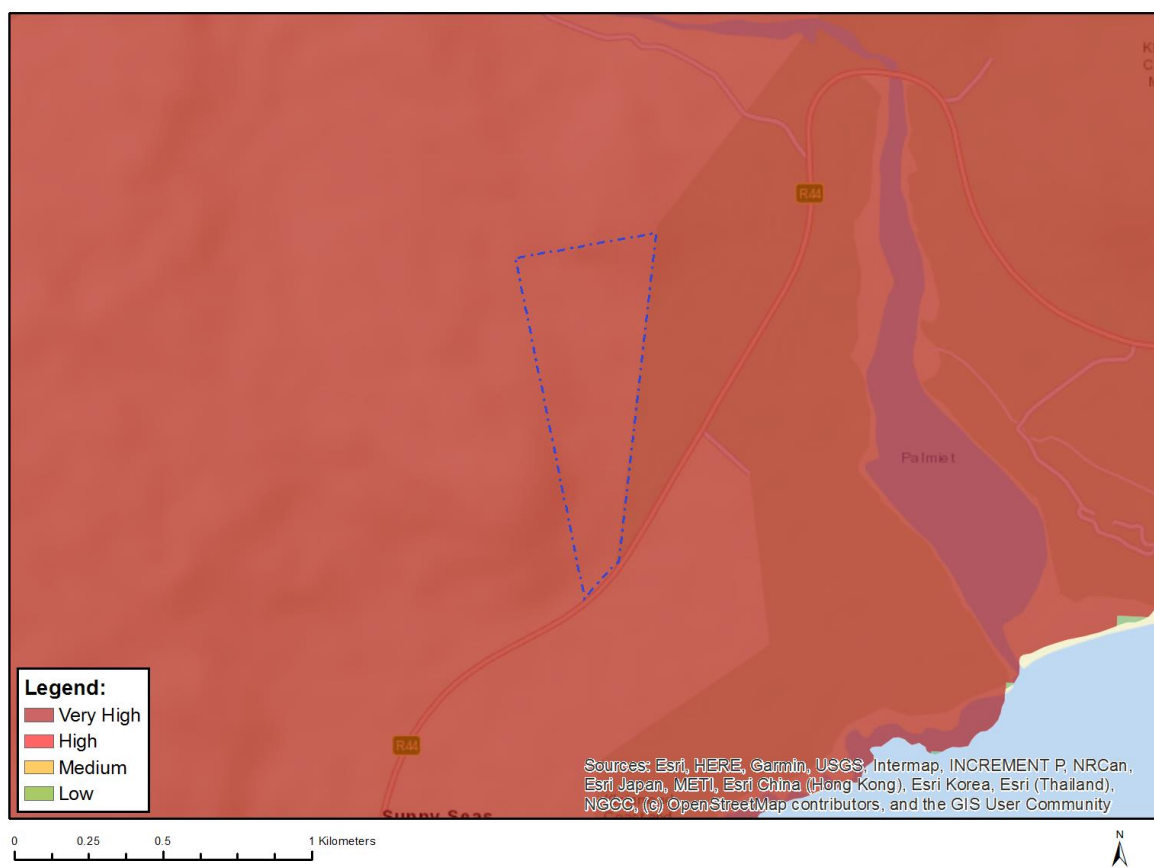
Sensitivity	Feature(s)
High	<i>Aspalathus oblongifolia</i>
High	<i>Protea angustata</i>
High	<i>Wahlenbergia polyantha</i>
High	<i>Thamnochortus pellucidus</i>
Medium	<i>Lampranthus leptaleon</i>
Medium	<i>Lampranthus spiniformis</i>
Medium	<i>Lampranthus stenus</i>
Medium	<i>Lampranthus tenuifolius</i>
Medium	<i>Delosperma guthriei</i>
Medium	<i>Erepsia promontorii</i>
Medium	<i>Amphithalea oppositifolia</i>
Medium	<i>Amphithalea virgata</i>
Medium	<i>Amphithalea bowiei</i>

Medium	<i>Liparia angustifolia</i>
Medium	<i>Aspalathus globosa</i>
Medium	<i>Aspalathus globulosa</i>
Medium	<i>Aspalathus monosperma</i>
Medium	<i>Aspalathus oblongifolia</i>
Medium	<i>Aspalathus stokoei</i>
Medium	<i>Otholobium thomii</i>
Medium	<i>Lebeckia uniflora</i>
Medium	<i>Podalyria argentea</i>
Medium	<i>Colpoos speciosus</i>
Medium	<i>Audouinia capitata</i>
Medium	<i>Berzelia dregeana</i>
Medium	<i>Berzelia ecklonii</i>
Medium	<i>Staavia brownii</i>
Medium	<i>Sorocephalus tenuifolius</i>
Medium	<i>Leucadendron coniferum</i>
Medium	<i>Leucadendron linifolium</i>
Medium	<i>Leucadendron platyspermum</i>
Medium	<i>Leucospermum hypophyllocarpodendron</i> subsp. <i>hypophyllocarpodendron</i>
Medium	<i>Leucospermum prostratum</i>
Medium	<i>Protea angustata</i>
Medium	<i>Protea longifolia</i>
Medium	<i>Paranomus abrotanifolius</i>
Medium	<i>Mimetes hirtus</i>
Medium	<i>Mimetes hottentoticus</i>
Medium	<i>Spatalla mollis</i>
Medium	<i>Spatalla prolifera</i>
Medium	<i>Diastella fraterna</i>
Medium	<i>Diastella thymelaeoides</i> subsp. <i>meridiana</i>
Medium	<i>Serruria deluvialis</i>
Medium	<i>Serruria flagellifolia</i>
Medium	<i>Serruria heterophylla</i>
Medium	<i>Serruria inconspicua</i>
Medium	<i>Orothamnus zeyheri</i>
Medium	<i>Merciera azurea</i>
Medium	<i>Merciera tenuifolia</i>
Medium	<i>Wahlenbergia polyantha</i>
Medium	<i>Apodytes geldenhuysii</i>
Medium	Sensitive species 794
Medium	<i>Manulea exigua</i>
Medium	Sensitive species 344
Medium	<i>Pentameris holciformis</i>
Medium	<i>Pentameris pholiuroides</i>
Medium	<i>Ehrharta setacea</i> subsp. <i>disticha</i>
Medium	<i>Ehrharta setacea</i> subsp. <i>uniflora</i>
Medium	<i>Anthospermum ericifolium</i>
Medium	<i>Echiostachys ecklonianus</i>
Medium	<i>Aristea zeyheri</i>
Medium	<i>Tritoniopsis caledonensis</i>
Medium	<i>Geissorhiza brehmii</i>
Medium	<i>Geissorhiza cataractarum</i>
Medium	<i>Ixia sarmentosa</i>
Medium	Sensitive species 232
Medium	Sensitive species 934
Medium	Sensitive species 1140
Medium	Sensitive species 1104
Medium	<i>Nivenia levynsiae</i>
Medium	<i>Nivenia stokoei</i>
Medium	<i>Pauridia alba</i>
Medium	<i>Erica capillaris</i> var. <i>capillaris</i>

Medium	<i>Erica filiformis</i> var. <i>filiformis</i>
Medium	<i>Erica lowryensis</i> var. <i>lowryensis</i>
Medium	<i>Erica patersonii</i>
Medium	<i>Erica pillansii</i> subsp. <i>pillansii</i>
Medium	<i>Erica propendens</i>
Medium	<i>Erica ribisaria</i>
Medium	<i>Erica riparia</i>
Medium	<i>Erica thomae</i>
Medium	<i>Erica pilosiflora</i> subsp. <i>pilosiflora</i>
Medium	<i>Erica paucifolia</i> subsp. <i>paucifolia</i>
Medium	<i>Erica banksii</i> subsp. <i>comptonii</i>
Medium	<i>Erica ceraria</i>
Medium	<i>Erica viscaria</i> subsp. <i>pendula</i>
Medium	<i>Erica pillansii</i> subsp. <i>fervida</i>
Medium	<i>Sonderothamnus petraeus</i>
Medium	<i>Grubbia rourkei</i>
Medium	Sensitive species 8
Medium	Sensitive species 1250
Medium	Sensitive species 714
Medium	<i>Centella caespitosa</i>
Medium	<i>Isolepis venustula</i>
Medium	<i>Ficinia distans</i>
Medium	<i>Ficinia elatior</i>
Medium	<i>Ficinia micrantha</i>
Medium	<i>Ficinia minutiflora</i>
Medium	<i>Ficinia pinguior</i>
Medium	<i>Ficinia rigida</i>
Medium	<i>Thamnochortus dumosus</i>
Medium	<i>Thamnochortus pellucidus</i>
Medium	<i>Elegia fenestrata</i>
Medium	<i>Elegia prominens</i>
Medium	<i>Anthochortus capensis</i>
Medium	<i>Hypodiscus alternans</i>
Medium	<i>Restio pumilis</i>
Medium	<i>Restio clandestinus</i>
Medium	<i>Restio femineus</i>
Medium	<i>Restio papillosus</i>
Medium	<i>Askidiosperma rugosum</i>
Medium	Sensitive species 384
Medium	Sensitive species 460
Medium	Sensitive species 1139
Medium	<i>Acrolophia bolusii</i>
Medium	Sensitive species 1192
Medium	<i>Pterygodium cruciferum</i>
Medium	<i>Pterygodium bifidum</i>
Medium	<i>Evotella rubiginosa</i>
Medium	<i>Gnidia humilis</i>
Medium	<i>Passerina paludosa</i>
Medium	<i>Metalasia lichtensteinii</i>
Medium	<i>Syncarpha zeyheri</i>
Medium	<i>Thaminophyllum mundii</i>
Medium	<i>Cotula eckloniana</i>
Medium	<i>Arctotis angustifolia</i>
Medium	<i>Pteronia tenuifolia</i>
Medium	<i>Cullumia squarrosa</i>
Medium	<i>Osmitopsis parvifolia</i>
Medium	<i>Agathosma hookeri</i>
Medium	<i>Cliffortia ericifolia</i>
Medium	<i>Cliffortia heterophylla</i>
Medium	<i>Cliffortia viridis</i>

Medium	Cliffortia prionota
Medium	Cliffortia recurvata
Medium	Muraltia bolusii
Medium	Muraltia paludosa
Medium	Sensitive species 719
Medium	Sensitive species 1151
Medium	Sensitive species 547
Medium	Phylica linifolia
Medium	Phylica plumosa var. squarrosa
Medium	Phylica virgata
Medium	Orthochilus litoralis
Medium	Capelio caledonica
Medium	Skiatophytum skiatophytoides
Medium	Lampranthus debilis
Medium	Lampranthus glaucus
Medium	Xiphotheca reflexa
Medium	Aspalathus lebeckioides
Medium	Protea aspera
Medium	Protea scolymocephala
Medium	Sensitive species 593
Medium	Sensitive species 800
Medium	Sensitive species 335
Medium	Sensitive species 599
Medium	Elegia verreauxii
Medium	Restio paludosus
Medium	Sensitive species 500
Medium	Sensitive species 53
Medium	Pachites bodkinii
Medium	Lachnaea grandiflora

MAP OF RELATIVE TERRESTRIAL BIODIVERSITY THEME SENSITIVITY



Very High sensitivity	High sensitivity	Medium sensitivity	Low sensitivity
X			

Sensitivity Features:

Sensitivity	Feature(s)
Very High	Critical biodiversity area 1
Very High	FEPA Subcatchments
Very High	Strategic Water Source Areas
Very High	Critically endangered ecosystem
Very High	Endangered ecosystem