

**SCREENING REPORT FOR AN ENVIRONMENTAL AUTHORIZATION AS
REQUIRED BY THE 2014 EIA REGULATIONS – PROPOSED SITE
ENVIRONMENTAL SENSITIVITY**

EIA Reference number: 0

Project name: Portion 7 of the Farm 259

Project title: Portion 7 of the Farm 259

Date screening report generated: 04/12/2024 12:14:37

Applicant: Johannes

Compiler: Lornay Environmental Consulting

Compiler signature:

.....

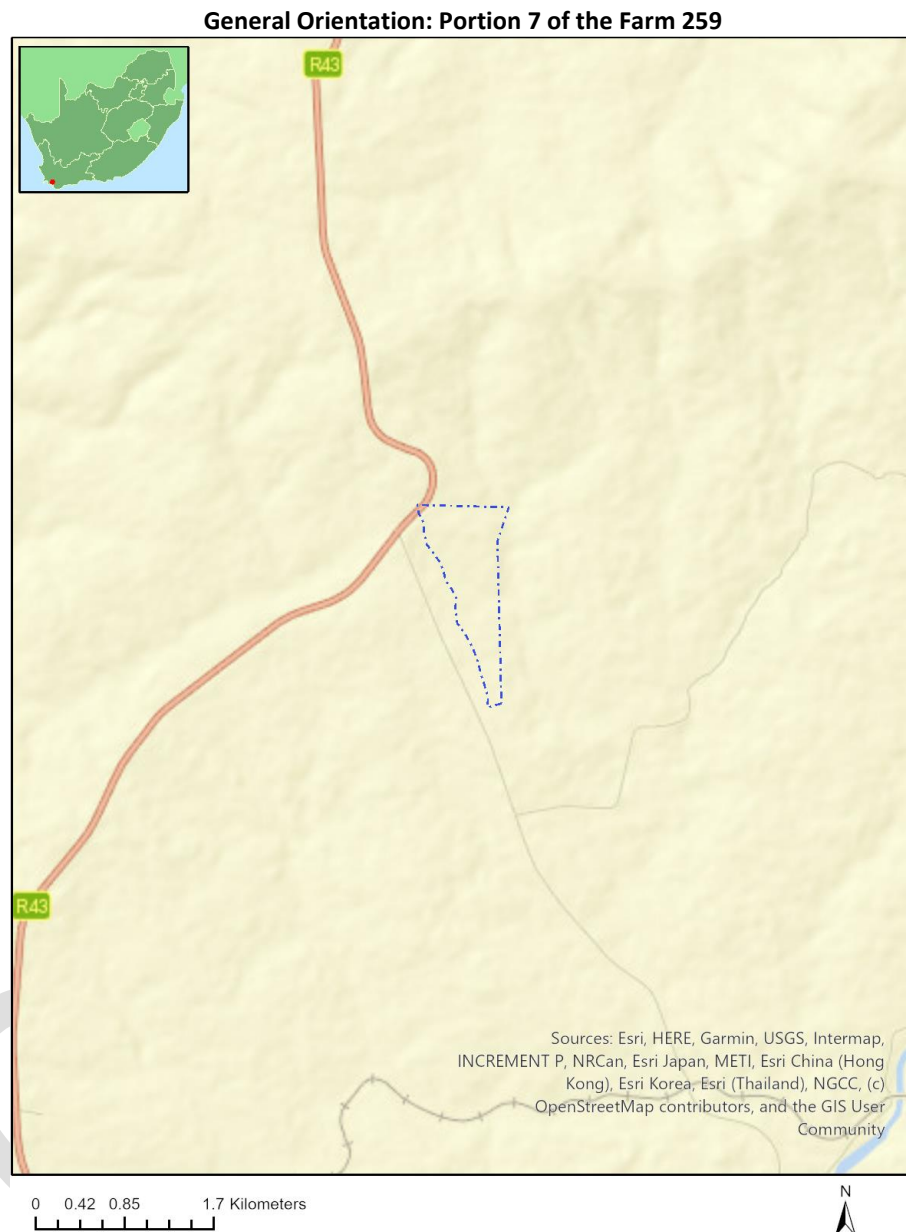
Application Category: Transformation of land | Indigenous vegetation

Table of Contents

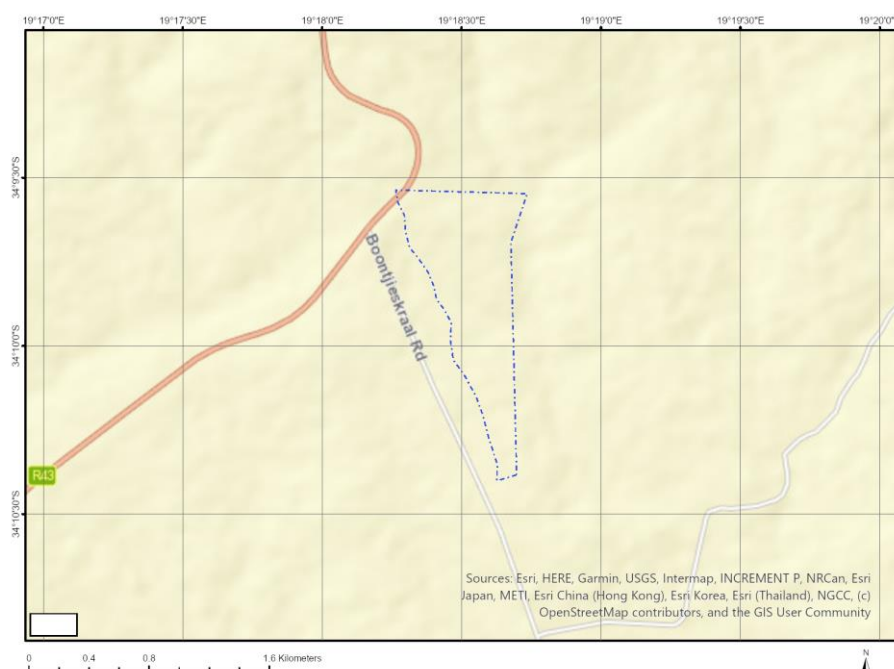
Proposed Project Location	3
Orientation map 1: General location	3
Map of proposed site and relevant area(s)	4
Cadastral details of the proposed site	4
Wind and Solar developments with an approved Environmental Authorisation or applications under consideration within 30 km of the proposed area	4
Environmental Management Frameworks relevant to the application	5
Environmental screening results and assessment outcomes	5
Relevant development incentives, restrictions, exclusions or prohibitions	5
Proposed Development Area Environmental Sensitivity	5
Specialist assessments identified	5
Results of the environmental sensitivity of the proposed area	7
MAP OF RELATIVE AGRICULTURE THEME SENSITIVITY	7
MAP OF RELATIVE ANIMAL SPECIES THEME SENSITIVITY	8
MAP OF RELATIVE AQUATIC BIODIVERSITY THEME SENSITIVITY	9
MAP OF RELATIVE ARCHAEOLOGICAL AND CULTURAL HERITAGE THEME SENSITIVITY	10
MAP OF RELATIVE CIVIL AVIATION THEME SENSITIVITY	11
MAP OF RELATIVE DEFENCE THEME SENSITIVITY	12
MAP OF RELATIVE PALEONTOLOGY THEME SENSITIVITY	13
MAP OF RELATIVE PLANT SPECIES THEME SENSITIVITY	14
MAP OF RELATIVE TERRESTRIAL BIODIVERSITY THEME SENSITIVITY	16

Proposed Project Location

Orientation map 1: General location



Map of proposed site and relevant area(s)



Cadastral details of the proposed site

Property details:

No	Farm Name	Farm/ Erf No	Portion	Latitude	Longitude	Property Type
1	RIET FONTEIN	259	0	34°10'8.86S	19°17'59.87E	Farm
2	RIET FONTEIN	259	7	34°9'50.8S	19°18'32.68E	Farm Portion

Development footprint¹ vertices:

No development footprint(s) specified.

Wind and Solar developments with an approved Environmental Authorisation or applications under consideration within 30 km of the proposed area

No	EIA Reference No	Classification	Status of application	Distance from proposed area (km)
1	14/12/16/3/3/2/260/AM1	Wind	Approved	1.4
2	14/12/16/3/3/2/260	Wind	Approved	1.4
3	12/12/20/1746/1	Wind	Approved	5.9
4	16/3/3/1/E4/27/1020/21	Solar PV	Approved	17.6
5	12/12/20/1746/AM3	Wind	Approved	5.9
6	12/12/20/1746	Wind	Approved	5.9

¹ "development footprint", means the area within the site on which the development will take place and includes all ancillary developments for example roads, power lines, boundary walls, paving etc. which require vegetation clearance or which will be disturbed and for which the application has been submitted.

Environmental Management Frameworks relevant to the application

No intersections with EMF areas found.

Environmental screening results and assessment outcomes

The following sections contain a summary of any development incentives, restrictions, exclusions or prohibitions that apply to the proposed development site as well as the most environmental sensitive features on the site based on the site sensitivity screening results for the application classification that was selected. The application classification selected for this report is:

Transformation of land | Indigenous vegetation.

Relevant development incentives, restrictions, exclusions or prohibitions

The following development incentives, restrictions, exclusions or prohibitions and their implications that apply to this site are indicated below.

Incentive, restriction or prohibition	Implication
Renewable energy development zones 1-Overberg	https://screening.environment.gov.za/ScreeningDownloads/DevelopmentZones/Combined_REDZ.pdf

Proposed Development Area Environmental Sensitivity

The following summary of the development site environmental sensitivities is identified. Only the highest environmental sensitivity is indicated. The footprint environmental sensitivities for the proposed development footprint as identified, are indicative only and must be verified on site by a suitably qualified person before the specialist assessments identified below can be confirmed.

Theme	Very High sensitivity	High sensitivity	Medium sensitivity	Low sensitivity
Agriculture Theme		X		
Animal Species Theme		X		
Aquatic Biodiversity Theme	X			
Archaeological and Cultural Heritage Theme		X		
Civil Aviation Theme			X	
Defence Theme				X
Paleontology Theme	X			
Plant Species Theme			X	
Terrestrial Biodiversity Theme	X			

Specialist assessments identified

Based on the selected classification, and the known impacts associated with the proposed development, the following list of specialist assessments have been identified for inclusion in the assessment report. It is the responsibility of the EAP to confirm this list and to motivate in the

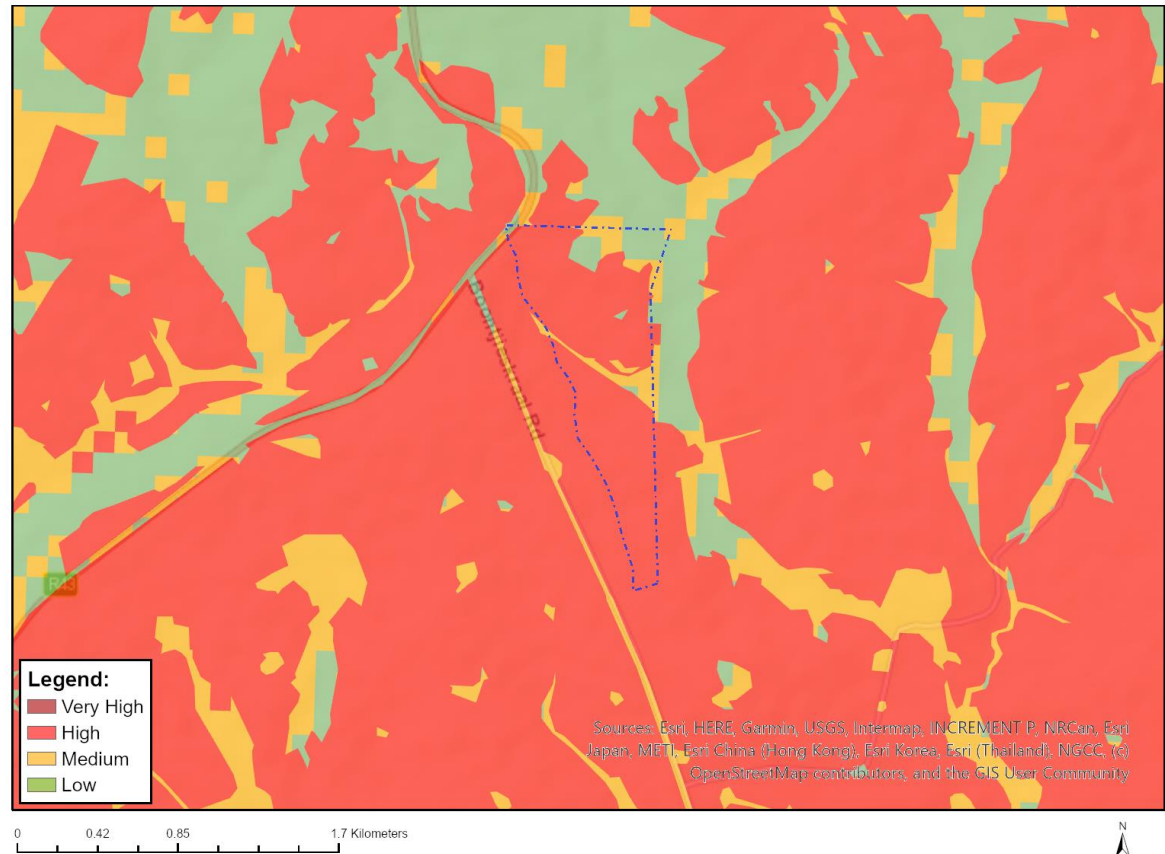
assessment report, the reason for not including any of the identified specialist study including the provision of photographic evidence of the site situation.

No	Specialist assessment	Assessment Protocol
1	Landscape/Visual Impact Assessment	https://screening.environment.gov.za/ScreeningDownloads/AssessmentProtocols/Gazetted General Requirement Assessment Protocols.pdf
2	Archaeological and Cultural Heritage Impact Assessment	https://screening.environment.gov.za/ScreeningDownloads/AssessmentProtocols/Gazetted General Requirement Assessment Protocols.pdf
3	Palaeontology Impact Assessment	https://screening.environment.gov.za/ScreeningDownloads/AssessmentProtocols/Gazetted General Requirement Assessment Protocols.pdf
4	Terrestrial Biodiversity Impact Assessment	https://screening.environment.gov.za/ScreeningDownloads/AssessmentProtocols/Gazetted Terrestrial Biodiversity Assessment Protocols.pdf
5	Aquatic Biodiversity Impact Assessment	https://screening.environment.gov.za/ScreeningDownloads/AssessmentProtocols/Gazetted Aquatic Biodiversity Assessment Protocols.pdf
6	Socio-Economic Assessment	https://screening.environment.gov.za/ScreeningDownloads/AssessmentProtocols/Gazetted General Requirement Assessment Protocols.pdf
7	Plant Species Assessment	https://screening.environment.gov.za/ScreeningDownloads/AssessmentProtocols/Gazetted Plant Species Assessment Protocols.pdf
8	Animal Species Assessment	https://screening.environment.gov.za/ScreeningDownloads/AssessmentProtocols/Gazetted Animal Species Assessment Protocols.pdf

Results of the environmental sensitivity of the proposed area.

The following section represents the results of the screening for environmental sensitivity of the proposed site for relevant environmental themes associated with the project classification. It is the duty of the EAP to ensure that the environmental themes provided by the screening tool are comprehensive and complete for the project. Refer to the disclaimer.

MAP OF RELATIVE AGRICULTURE THEME SENSITIVITY

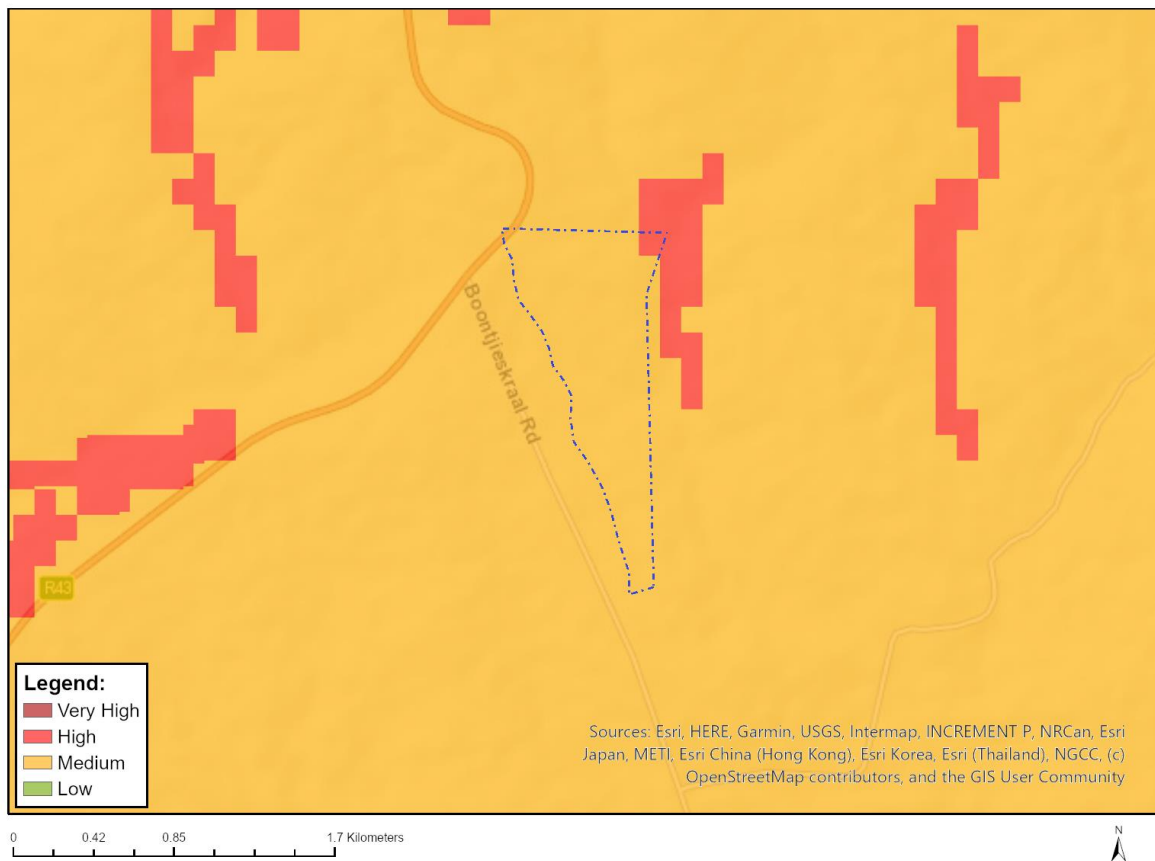


Very High sensitivity	High sensitivity	Medium sensitivity	Low sensitivity
	X		

Sensitivity Features:

Sensitivity	Feature(s)
High	Land capability;09. Moderate-High/10. Moderate-High
High	Annual Crop Cultivation / Planted Pastures Rotation;Land capability;06. Low-Moderate/07. Low-Moderate/08. Moderate
High	Annual Crop Cultivation / Planted Pastures Rotation;Land capability;01. Very low/02. Very low/03. Low-Very low/04. Low-Very low/05. Low
High	Annual Crop Cultivation / Planted Pastures Rotation;Land capability;09. Moderate-High/10. Moderate-High
Low	Land capability;01. Very low/02. Very low/03. Low-Very low/04. Low-Very low/05. Low
Medium	Land capability;06. Low-Moderate/07. Low-Moderate/08. Moderate

MAP OF RELATIVE ANIMAL SPECIES THEME SENSITIVITY



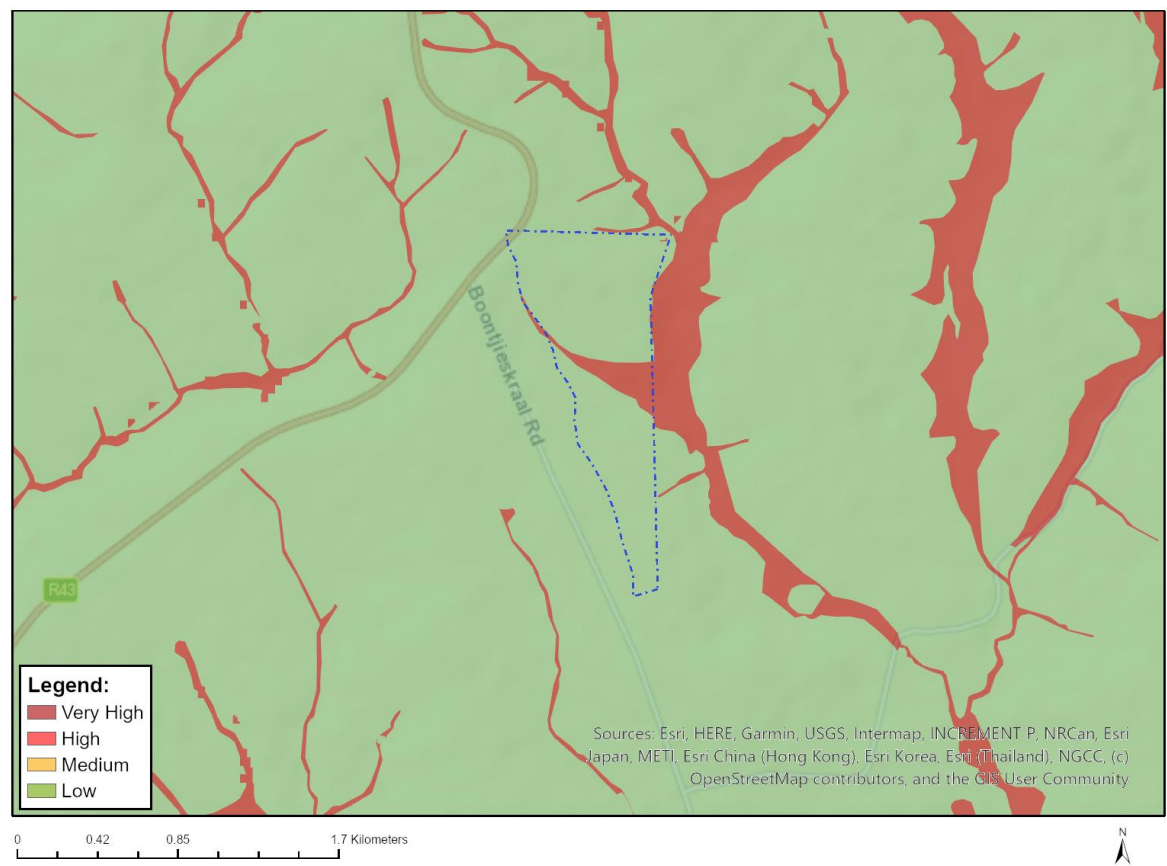
Where only a sensitive plant unique number or sensitive animal unique number is provided in the screening report and an assessment is required, the environmental assessment practitioner (EAP) or specialist is required to email SANBI at eiadatarequests@sanbi.org.za listing all sensitive species with their unique identifiers for which information is required. The name has been withheld as the species may be prone to illegal harvesting and must be protected. SANBI will release the actual species name after the details of the EAP or specialist have been documented.

Very High sensitivity	High sensitivity	Medium sensitivity	Low sensitivity
	X		

Sensitivity Features:

Sensitivity	Feature(s)
High	Aves-Circus ranivorus
High	Aves-Neotis denhami
Medium	Aves-Circus maurus
Medium	Invertebrate-Conocephalus peringueyi
Medium	Invertebrate-Brinckiella aptera
Medium	Invertebrate-Aneuryphymus montanus

MAP OF RELATIVE AQUATIC BIODIVERSITY THEME SENSITIVITY

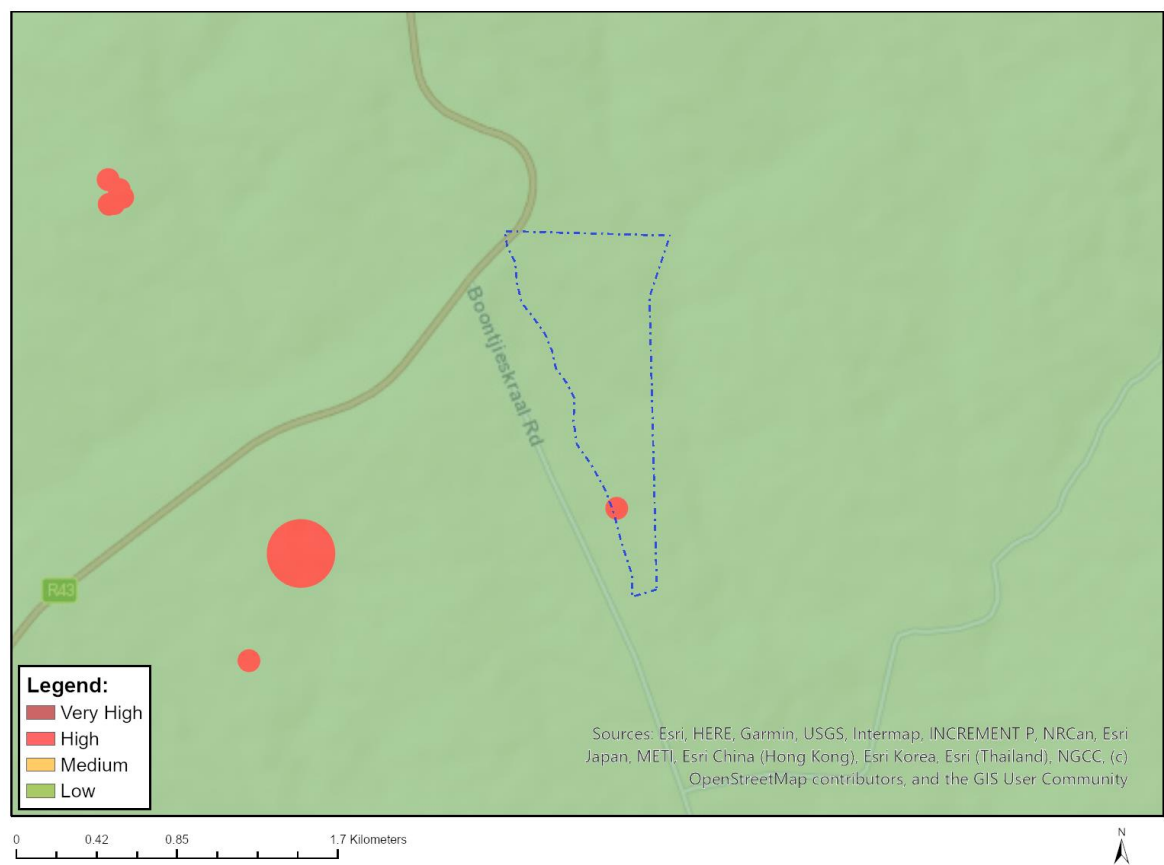


Very High sensitivity	High sensitivity	Medium sensitivity	Low sensitivity
X			

Sensitivity Features:

Sensitivity	Feature(s)
Low	Low sensitivity
Very High	CBA 1: Aquatic
Very High	Wetlands_ East Coast Renosterveld Bioregion (Valley-bottom)

MAP OF RELATIVE ARCHAEOLOGICAL AND CULTURAL HERITAGE THEME SENSITIVITY

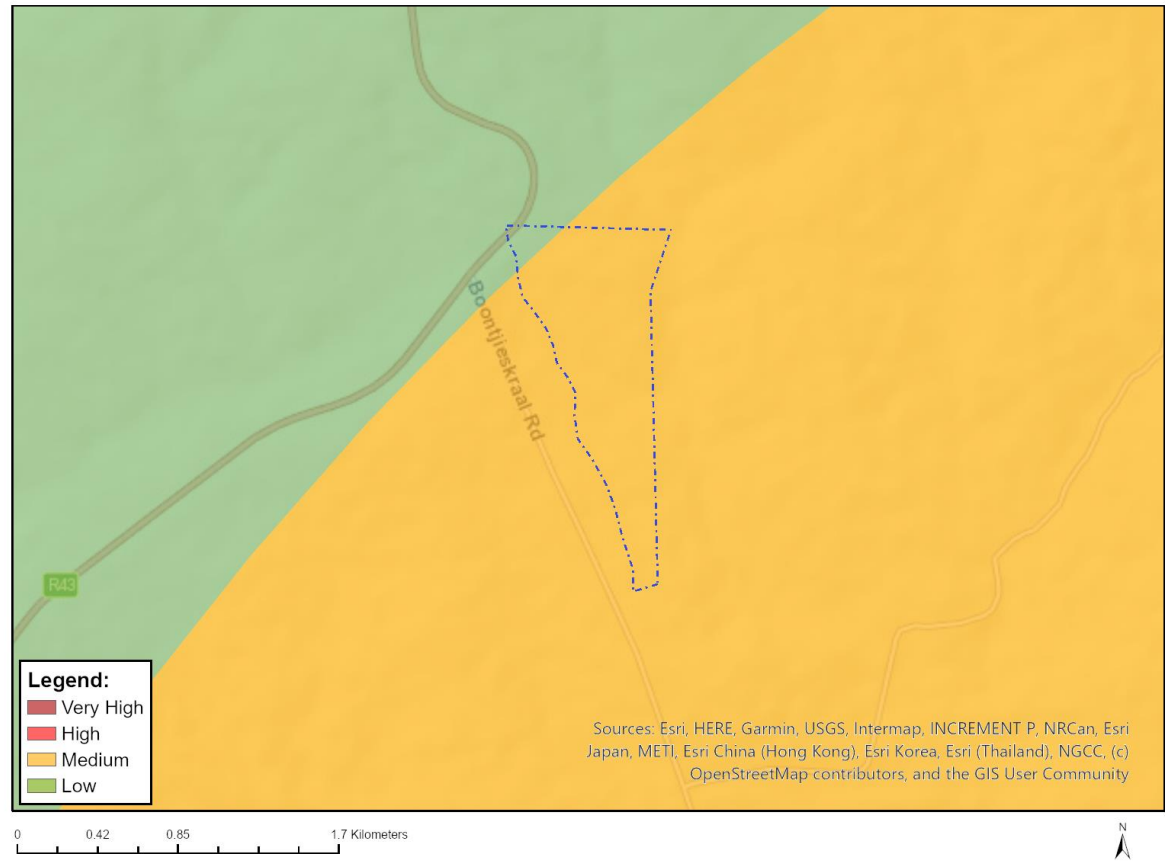


Very High sensitivity	High sensitivity	Medium sensitivity	Low sensitivity
	X		

Sensitivity Features:

Sensitivity	Feature(s)
High	Within 50m of a Grade IIIc Heritage site
Low	Low sensitivity

MAP OF RELATIVE CIVIL AVIATION THEME SENSITIVITY

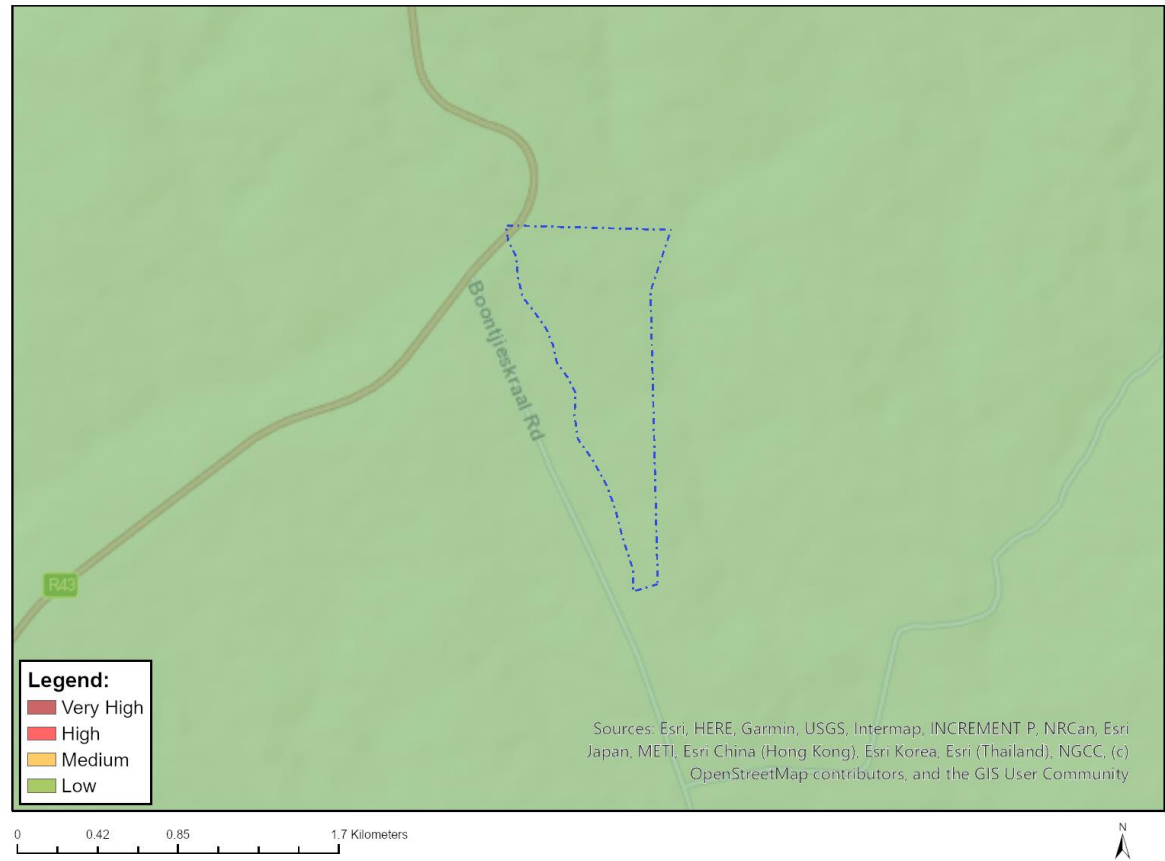


Very High sensitivity	High sensitivity	Medium sensitivity	Low sensitivity
		X	

Sensitivity Features:

Sensitivity	Feature(s)
Low	Low sensitivity
Medium	Between 8 and 15 km of other civil aviation aerodrome

MAP OF RELATIVE DEFENCE THEME SENSITIVITY

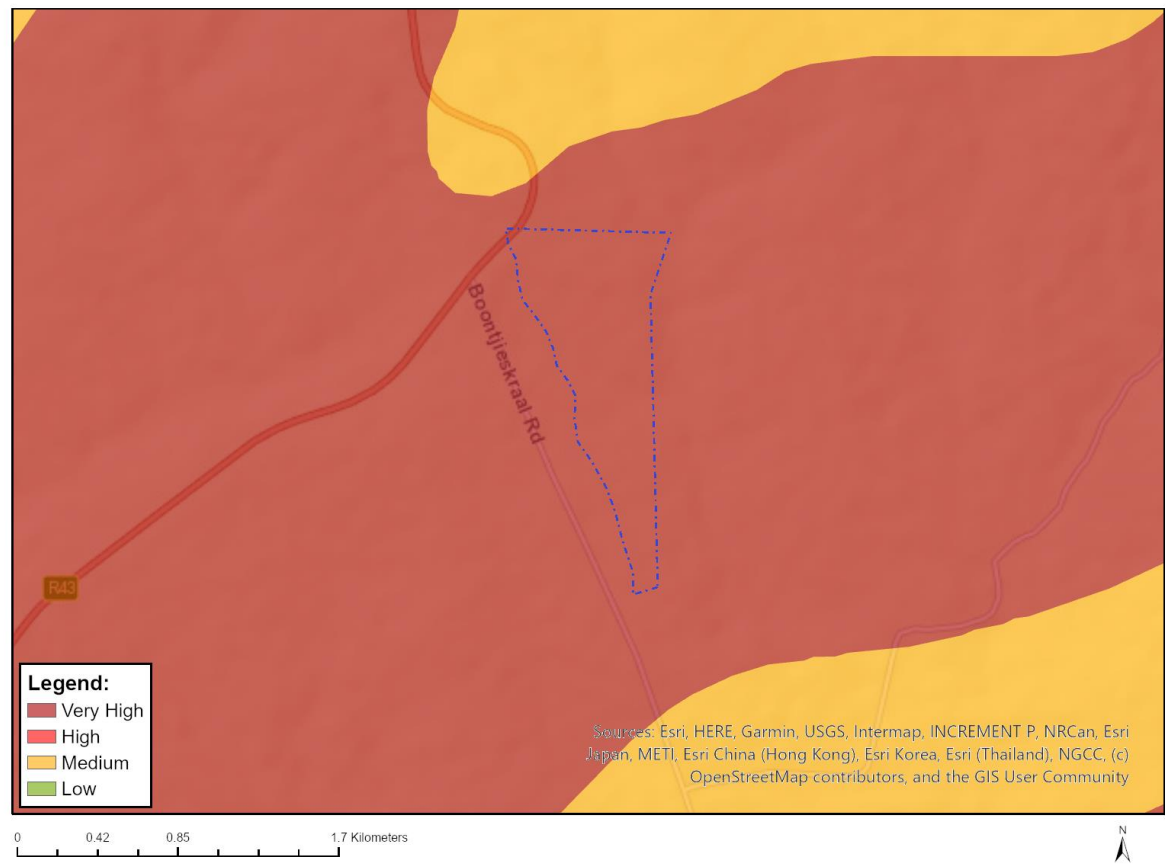


Very High sensitivity	High sensitivity	Medium sensitivity	Low sensitivity
			X

Sensitivity Features:

Sensitivity	Feature(s)
Low	Low Sensitivity

MAP OF RELATIVE PALEONTOLOGY THEME SENSITIVITY

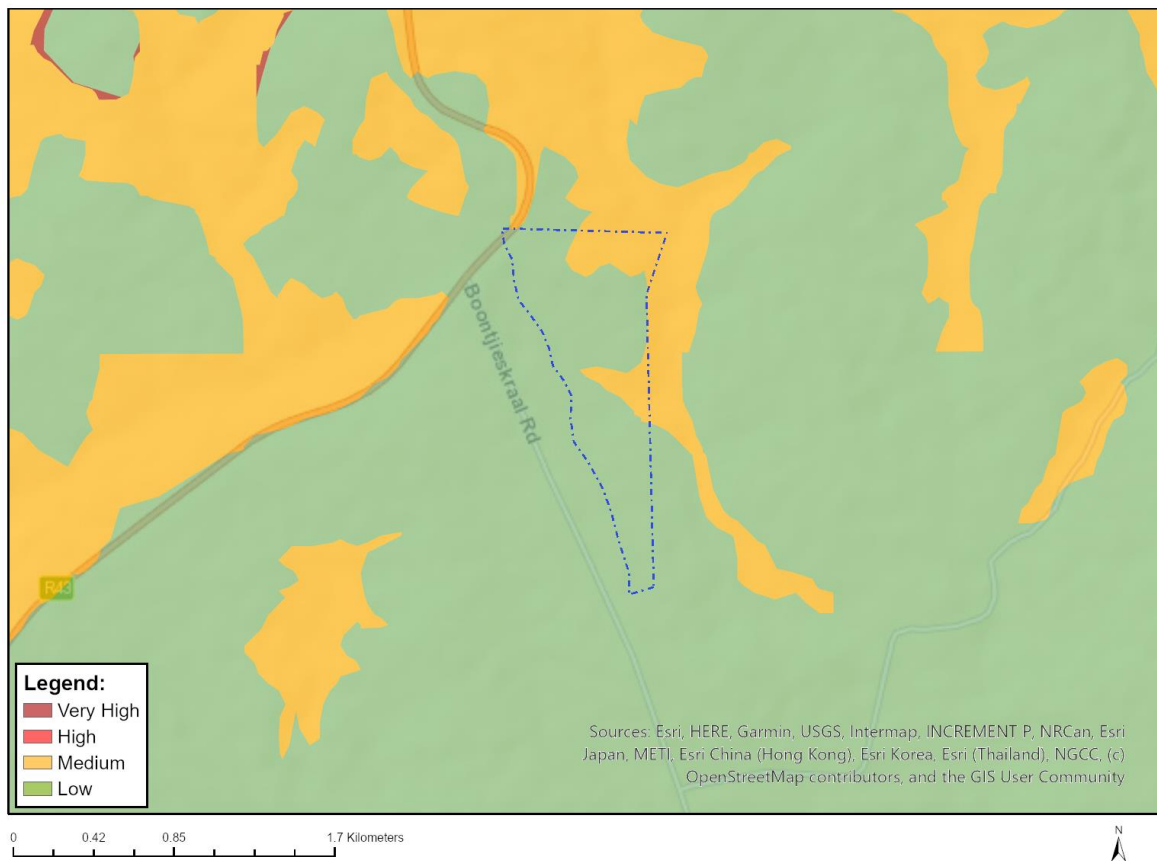


Very High sensitivity	High sensitivity	Medium sensitivity	Low sensitivity
X			

Sensitivity Features:

Sensitivity	Feature(s)
Very High	Features with a Very High paleontological sensitivity

MAP OF RELATIVE PLANT SPECIES THEME SENSITIVITY



Where only a sensitive plant unique number or sensitive animal unique number is provided in the screening report and an assessment is required, the environmental assessment practitioner (EAP) or specialist is required to email SANBI at eiadatarequests@sanbi.org.za listing all sensitive species with their unique identifiers for which information is required. The name has been withheld as the species may be prone to illegal harvesting and must be protected. SANBI will release the actual species name after the details of the EAP or specialist have been documented.

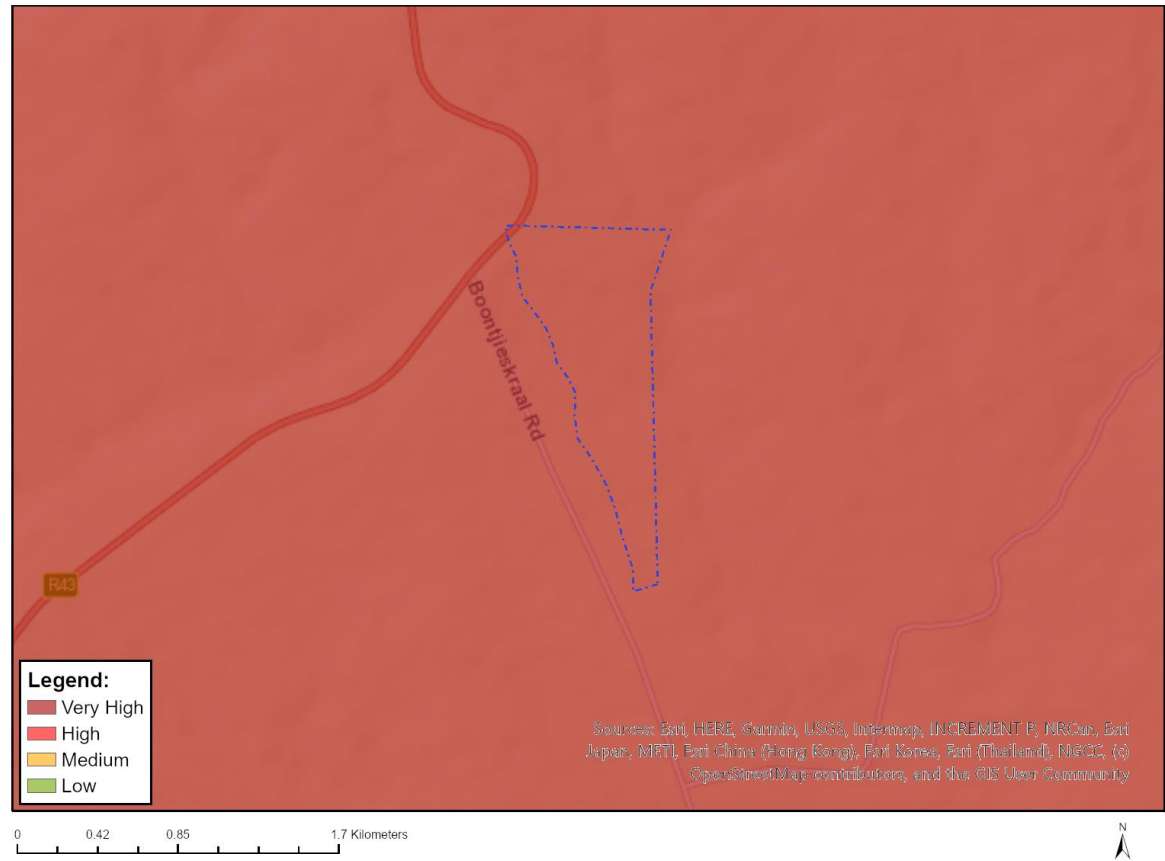
Very High sensitivity	High sensitivity	Medium sensitivity	Low sensitivity
		X	

Sensitivity Features:

Sensitivity	Feature(s)
Low	Low Sensitivity
Medium	Lampranthus filicaulis
Medium	Lampranthus leptaleon
Medium	Lampranthus spiniformis
Medium	Acrodon parvifolius
Medium	Acrodon subulatus
Medium	Brownanthus fraternus
Medium	Ruschia schollii
Medium	Drosanthemum flavum
Medium	Xiphotheca guthriei
Medium	Xiphotheca lanceolata
Medium	Psoralea fascicularis
Medium	Aspalathus millefolia

Medium	<i>Aspalathus rosea</i>
Medium	<i>Otholobium pungens</i>
Medium	<i>Otholobium</i> sp. nov. (Stirton & Zantovska 11281 NBG)
Medium	<i>Protea burchellii</i>
Medium	<i>Protea longifolia</i>
Medium	<i>Protea restionifolia</i>
Medium	<i>Freylinia helmei</i>
Medium	<i>Lobostemon capitatus</i>
Medium	<i>Echiostachys ecklonianus</i>
Medium	<i>Echiostachys incanus</i>
Medium	<i>Tritoniopsis elongata</i>
Medium	<i>Tritoniopsis flexuosa</i>
Medium	<i>Hesperantha fibrosa</i>
Medium	Sensitive species 556
Medium	Sensitive species 56
Medium	<i>Geissorhiza brehmii</i>
Medium	<i>Geissorhiza erosa</i>
Medium	<i>Sparaxis fragrans</i>
Medium	<i>Sparaxis grandiflora</i> subsp. <i>violacea</i>
Medium	<i>Ixia erubescens</i>
Medium	<i>Ixia trinervata</i>
Medium	<i>Ixia longituba</i> subsp. <i>longituba</i>
Medium	Sensitive species 157
Medium	Sensitive species 1253
Medium	Sensitive species 499
Medium	Sensitive species 650
Medium	Sensitive species 1079
Medium	Sensitive species 112
Medium	<i>Oxalis duriuscula</i>
Medium	<i>Erica brachysepala</i>
Medium	<i>Erica rhodopis</i>
Medium	<i>Erica paucifolia</i> subsp. <i>squarrosa</i>
Medium	Sensitive species 769
Medium	Sensitive species 259
Medium	Sensitive species 1142
Medium	<i>Hypodiscus rugosus</i>
Medium	<i>Cephalaria scabra</i>
Medium	<i>Pterygodium inversum</i>
Medium	<i>Metalasia plicata</i>
Medium	<i>Arctotheca forbesiana</i>
Medium	<i>Euchaetis schlechteri</i>
Medium	<i>Cliffortia monophylla</i>
Medium	<i>Muraltia caledonensis</i>
Medium	<i>Phylica anomala</i>
Medium	<i>Notobubon pungens</i>
Medium	<i>Lampranthus debilis</i>
Medium	<i>Drosanthemum lavisii</i>
Medium	<i>Aspalathus recurva</i>
Medium	<i>Paranomus bolusii</i>
Medium	Sensitive species 593
Medium	Sensitive species 800
Medium	Sensitive species 335
Medium	Sensitive species 521
Medium	Sensitive species 599
Medium	<i>Elegia squamosa</i>
Medium	<i>Restio rigoratus</i>
Medium	Sensitive species 728
Medium	<i>Cotula pusilla</i>
Medium	<i>Perdicium capense</i>

MAP OF RELATIVE TERRESTRIAL BIODIVERSITY THEME SENSITIVITY



Very High sensitivity	High sensitivity	Medium sensitivity	Low sensitivity
X			

Sensitivity Features:

Sensitivity	Feature(s)
Very High	ESA 2: Restore from other land use
Very High	CBA 2: Terrestrial
Very High	CBA 1: Terrestrial
Very High	National Protected Area Expansion Strategy (NPAES)
Very High	CR_ Western Ruens Shale Renosterveld