

**SCREENING REPORT FOR AN ENVIRONMENTAL AUTHORIZATION AS
REQUIRED BY THE 2014 EIA REGULATIONS – PROPOSED SITE
ENVIRONMENTAL SENSITIVITY**

EIA Reference number: 0

Project name: 0

Project title: 0

Date screening report generated: 30/06/2025 15:50:25

Applicant: Coot Club (Pty) Ltd

Compiler: Lornay Environmental Consulting

Compiler signature:

.....

Application Category: Transformation of land | Indigenous vegetation

Table of Contents

Proposed Project Location	3
Orientation map 1: General location	3
Map of proposed site and relevant area(s)	4
Cadastral details of the proposed site	4
Wind and Solar developments with an approved Environmental Authorisation or applications under consideration within 30 km of the proposed area	4
Environmental Management Frameworks relevant to the application	5
Environmental screening results and assessment outcomes	5
Relevant development incentives, restrictions, exclusions or prohibitions	5
Proposed Development Area Environmental Sensitivity	5
Specialist assessments identified	5
Results of the environmental sensitivity of the proposed area	7
MAP OF RELATIVE AGRICULTURE THEME SENSITIVITY	7
MAP OF RELATIVE ANIMAL SPECIES THEME SENSITIVITY	8
MAP OF RELATIVE AQUATIC BIODIVERSITY THEME SENSITIVITY	9
MAP OF RELATIVE ARCHAEOLOGICAL AND CULTURAL HERITAGE THEME SENSITIVITY	10
MAP OF RELATIVE CIVIL AVIATION THEME SENSITIVITY	11
MAP OF RELATIVE DEFENCE THEME SENSITIVITY	12
MAP OF RELATIVE PALEONTOLOGY THEME SENSITIVITY	13
MAP OF RELATIVE PLANT SPECIES THEME SENSITIVITY	14
MAP OF RELATIVE TERRESTRIAL BIODIVERSITY THEME SENSITIVITY	16

Proposed Project Location

Orientation map 1: General location



Map of proposed site and relevant area(s)



Cadastral details of the proposed site

Property details:

No	Farm Name	Farm/ Erf No	Portion	Latitude	Longitude	Property Type
1	WORTEL GAT	723	0	34°26'28.42S	19°21'39.02E	Farm
2	WORTEL GAT	723	1	34°26'12.89S	19°22'2.63E	Farm Portion
3	WORTEL GAT	723	1	34°26'29.28S	19°22'3.95E	Farm Portion

Development footprint¹ vertices:

No development footprint(s) specified.

Wind and Solar developments with an approved Environmental Authorisation or applications under consideration within 30 km of the proposed area

No	EIA Reference No	Classification	Status of application	Distance from proposed area (km)
1	12/12/20/1746/1	Wind	Approved	21.2
2	16/3/3/1/E2/29/1021/20	Solar PV	Approved	27.4
3	14/12/16/3/3/2/260/AM1	Wind	Approved	26.7
4	12/12/20/1746	Wind	Approved	21.2
5	14/12/16/3/3/2/260	Wind	Approved	26.7

¹ "development footprint", means the area within the site on which the development will take place and includes all ancillary developments for example roads, power lines, boundary walls, paving etc. which require vegetation clearance or which will be disturbed and for which the application has been submitted.

6	12/12/20/1746/AM3	Wind	Approved	21.2
---	-------------------	------	----------	------

Environmental Management Frameworks relevant to the application

No intersections with EMF areas found.

Environmental screening results and assessment outcomes

The following sections contain a summary of any development incentives, restrictions, exclusions or prohibitions that apply to the proposed development site as well as the most environmental sensitive features on the site based on the site sensitivity screening results for the application classification that was selected. The application classification selected for this report is:

Transformation of land | Indigenous vegetation.

Relevant development incentives, restrictions, exclusions or prohibitions

The following development incentives, restrictions, exclusions or prohibitions and their implications that apply to this site are indicated below.

Incentive, restriction or prohibition	Implication
South African Protected Areas	https://screening.environment.gov.za/ScreeningDownloads/DevelopmentZones/SAPAD_OR_2024_Q4_Metadata.pdf

Proposed Development Area Environmental Sensitivity

The following summary of the development site environmental sensitivities is identified. Only the highest environmental sensitivity is indicated. The footprint environmental sensitivities for the proposed development footprint as identified, are indicative only and must be verified on site by a suitably qualified person before the specialist assessments identified below can be confirmed.

Theme	Very High sensitivity	High sensitivity	Medium sensitivity	Low sensitivity
Agriculture Theme		X		
Animal Species Theme		X		
Aquatic Biodiversity Theme	X			
Archaeological and Cultural Heritage Theme	X			
Civil Aviation Theme				X
Defence Theme				X
Paleontology Theme	X			
Plant Species Theme		X		
Terrestrial Biodiversity Theme	X			

Specialist assessments identified

Based on the selected classification, and the known impacts associated with the proposed development, the following list of specialist assessments have been identified for inclusion in the assessment report. It is the responsibility of the EAP to confirm this list and to motivate in the

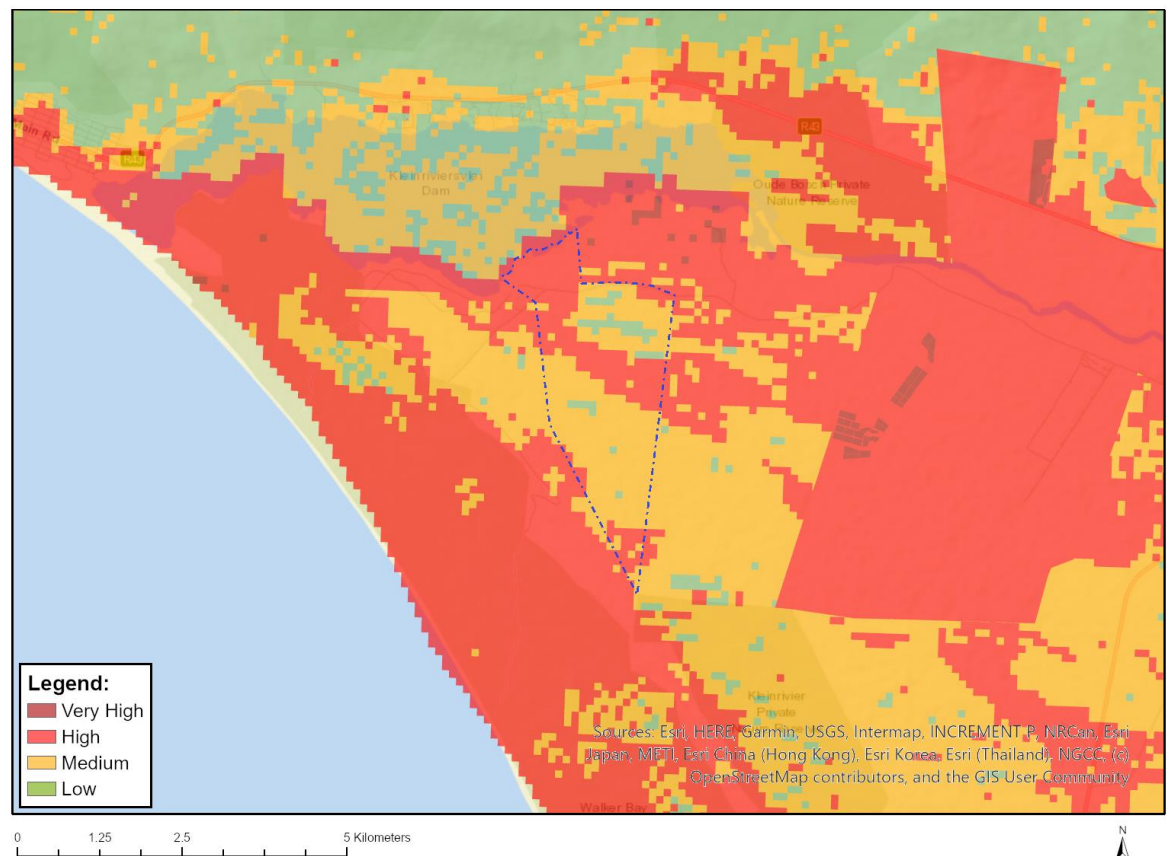
assessment report, the reason for not including any of the identified specialist study including the provision of photographic evidence of the site situation.

No	Specialist assessment	Assessment Protocol
1	Landscape/Visual Impact Assessment	https://screening.environment.gov.za/ScreeningDownloads/AssessmentProtocols/Gazetted_General_Requirement_Assessment_Protocols.pdf
2	Archaeological and Cultural Heritage Impact Assessment	https://screening.environment.gov.za/ScreeningDownloads/AssessmentProtocols/GuidanceforHIA.pdf
3	Palaeontology Impact Assessment	https://screening.environment.gov.za/ScreeningDownloads/AssessmentProtocols/GuidanceforPIA.pdf
4	Terrestrial Biodiversity Impact Assessment	https://screening.environment.gov.za/ScreeningDownloads/AssessmentProtocols/Gazetted_Terrestrial_Biodiversity_Assessment_Protocols.pdf
5	Aquatic Biodiversity Impact Assessment	https://screening.environment.gov.za/ScreeningDownloads/AssessmentProtocols/Gazetted_Aquatic_Biodiversity_Assessment_Protocols.pdf
6	Socio-Economic Assessment	https://screening.environment.gov.za/ScreeningDownloads/AssessmentProtocols/Gazetted_General_Requirement_Assessment_Protocols.pdf
7	Plant Species Assessment	https://screening.environment.gov.za/ScreeningDownloads/AssessmentProtocols/Gazetted_Plant_Species_Assessment_Protocols.pdf
8	Animal Species Assessment	https://screening.environment.gov.za/ScreeningDownloads/AssessmentProtocols/Gazetted_Animal_Species_Assessment_Protocols.pdf

Results of the environmental sensitivity of the proposed area.

The following section represents the results of the screening for environmental sensitivity of the proposed site for relevant environmental themes associated with the project classification. It is the duty of the EAP to ensure that the environmental themes provided by the screening tool are comprehensive and complete for the project. Refer to the disclaimer.

MAP OF RELATIVE AGRICULTURE THEME SENSITIVITY

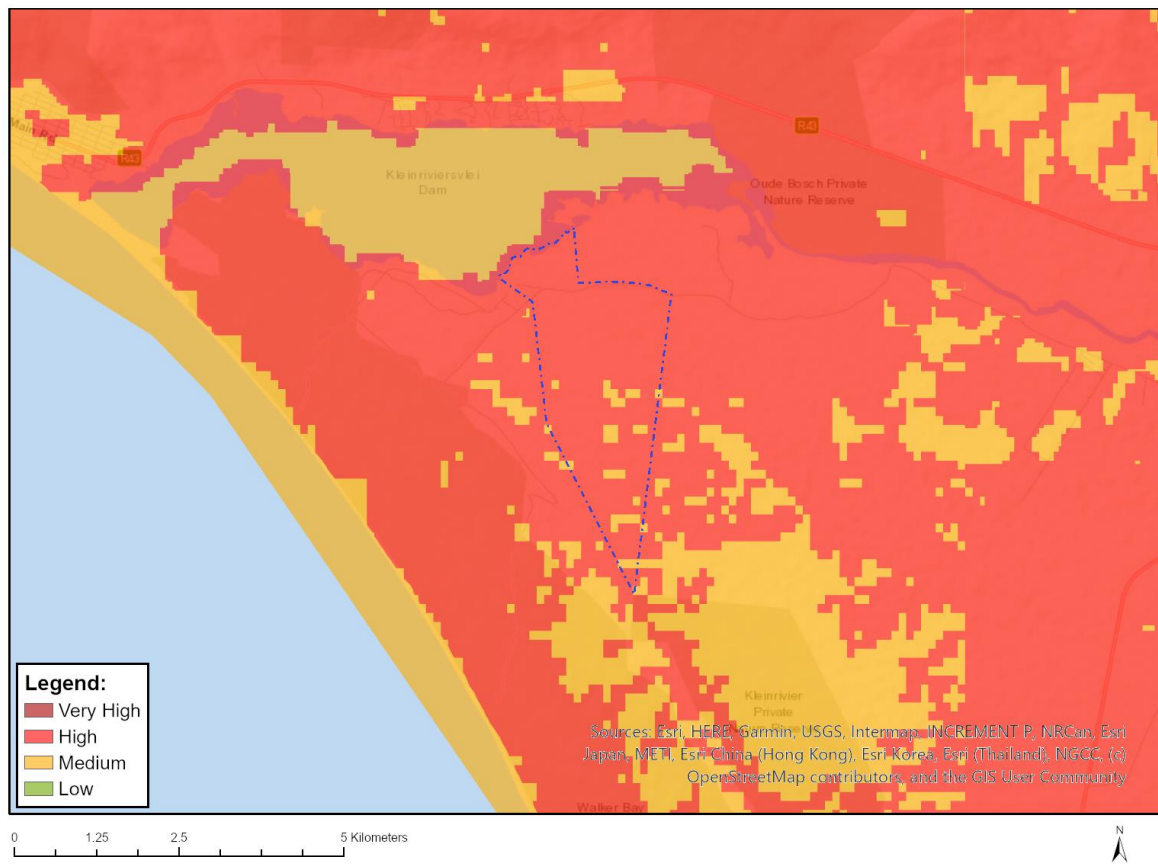


Very High sensitivity	High sensitivity	Medium sensitivity	Low sensitivity
	X		

Sensitivity Features:

Sensitivity	Feature(s)
High	08. Moderate
High	09. Moderate-High
High	10. Moderate-High
Low	05. Low
Medium	06. Low-Moderate
Medium	07. Low-Moderate

MAP OF RELATIVE ANIMAL SPECIES THEME SENSITIVITY



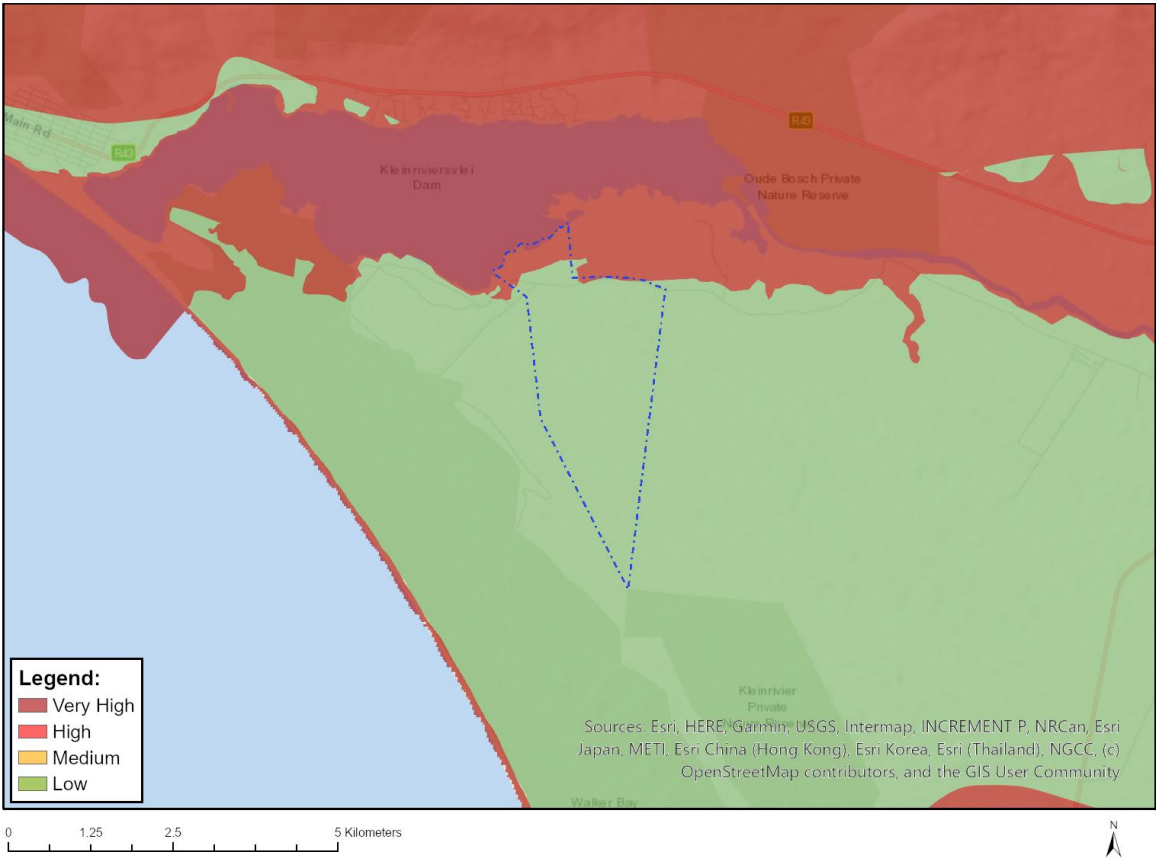
Where only a sensitive plant unique number or sensitive animal unique number is provided in the screening report and an assessment is required, the environmental assessment practitioner (EAP) or specialist is required to email SANBI at eiadatarequests@sanbi.org.za listing all sensitive species with their unique identifiers for which information is required. The name has been withheld as the species may be prone to illegal harvesting and must be protected. SANBI will release the actual species name after the details of the EAP or specialist have been documented.

Very High sensitivity	High sensitivity	Medium sensitivity	Low sensitivity
	X		

Sensitivity Features:

Sensitivity	Feature(s)
High	Aves-Circus ranivorus
High	Aves-Hydroprogne caspia
Medium	Aves-Circus maurus
Medium	Aves-Neotis denhami
Medium	Aves-Afrotis afra
Medium	Reptilia-Bitis armata
Medium	Invertebrate-Forest invertebrate
Medium	Invertebrate-Brinckiella aptera
Medium	Invertebrate-Aneuryphymus montanus

MAP OF RELATIVE AQUATIC BIODIVERSITY THEME SENSITIVITY



Very High sensitivity	High sensitivity	Medium sensitivity	Low sensitivity
X			

Sensitivity Features:

Sensitivity	Feature(s)
Low	Low Sensitivity
Very High	CBA: Estuary
Very High	Estuary
Very High	Estuary_Klein

MAP OF RELATIVE ARCHAEOLOGICAL AND CULTURAL HERITAGE THEME SENSITIVITY

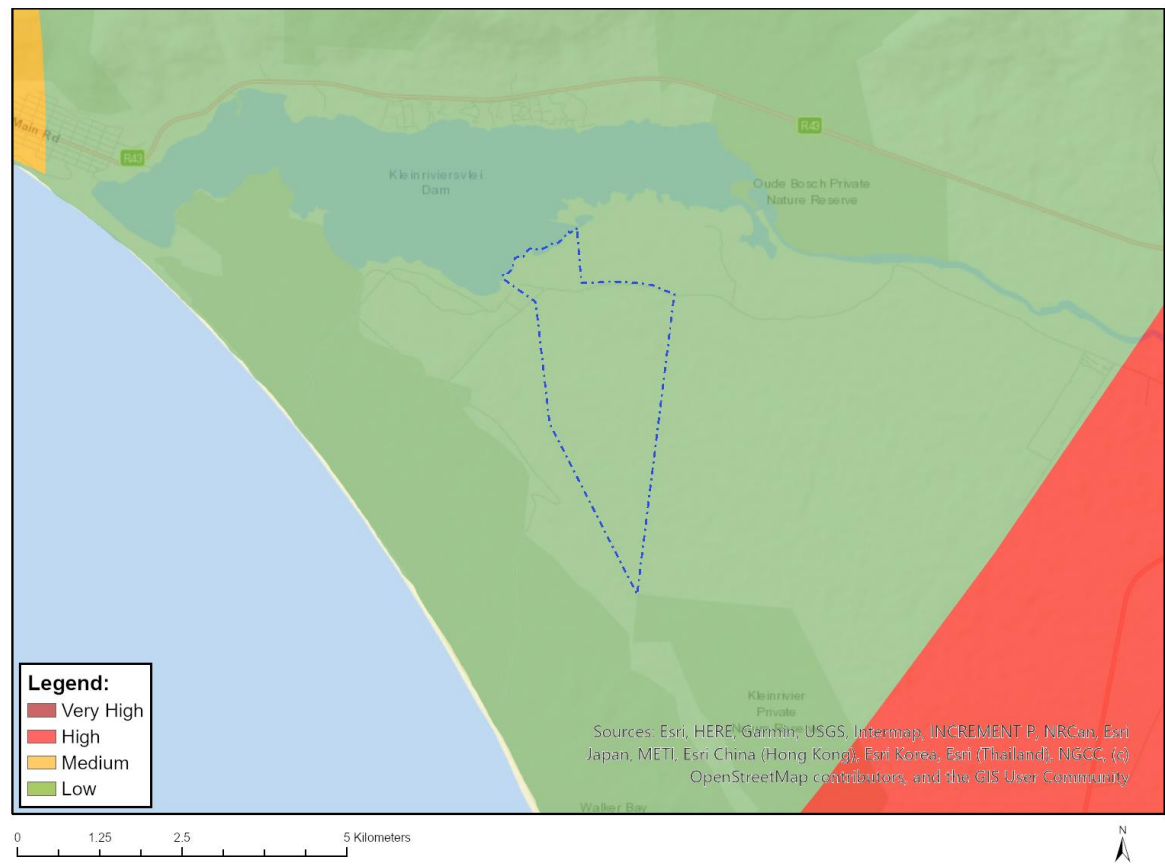


Very High sensitivity	High sensitivity	Medium sensitivity	Low sensitivity
X			

Sensitivity Features:

Sensitivity	Feature(s)
Low	Low Sensitivity
Very High	Within 100m of an Ungraded Heritage site

MAP OF RELATIVE CIVIL AVIATION THEME SENSITIVITY



Very High sensitivity	High sensitivity	Medium sensitivity	Low sensitivity
			X

Sensitivity Features:

Sensitivity	Feature(s)
Low	Low sensitivity

MAP OF RELATIVE DEFENCE THEME SENSITIVITY

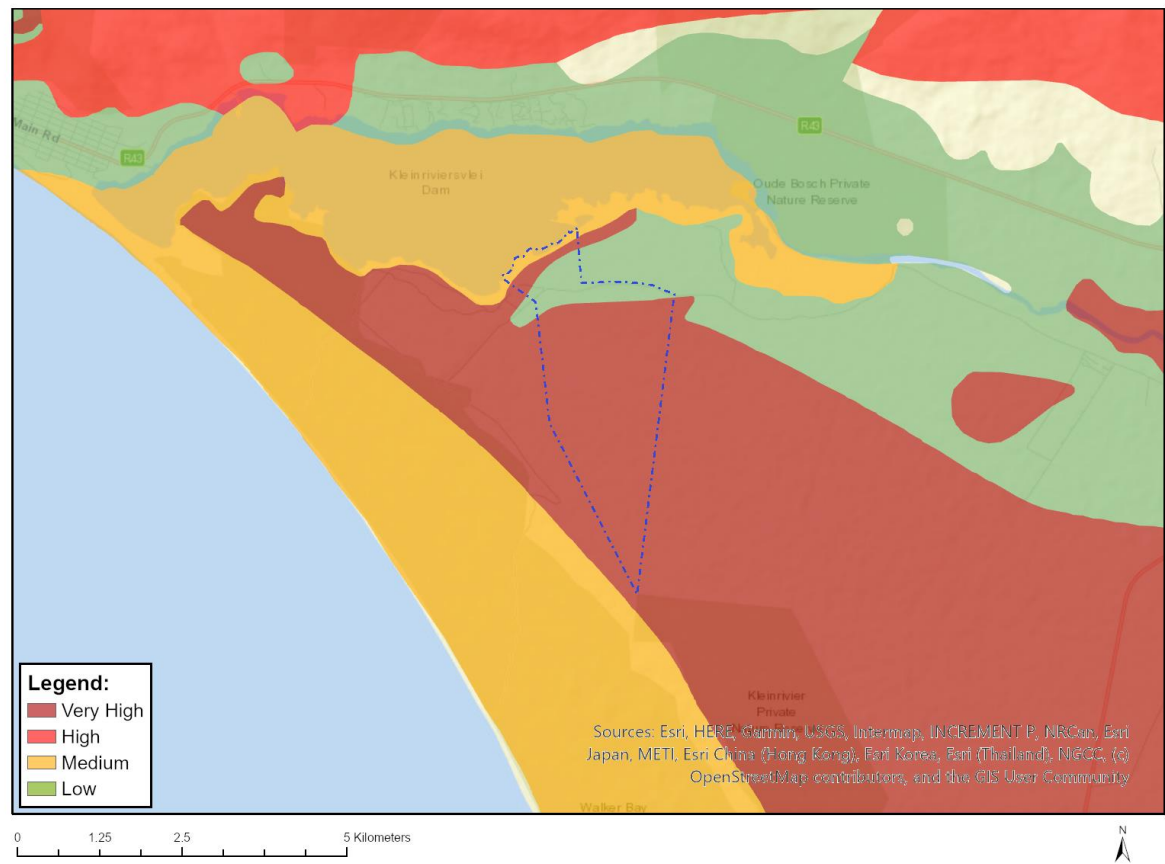


Very High sensitivity	High sensitivity	Medium sensitivity	Low sensitivity
			X

Sensitivity Features:

Sensitivity	Feature(s)
Low	Low Sensitivity

MAP OF RELATIVE PALEONTOLOGY THEME SENSITIVITY

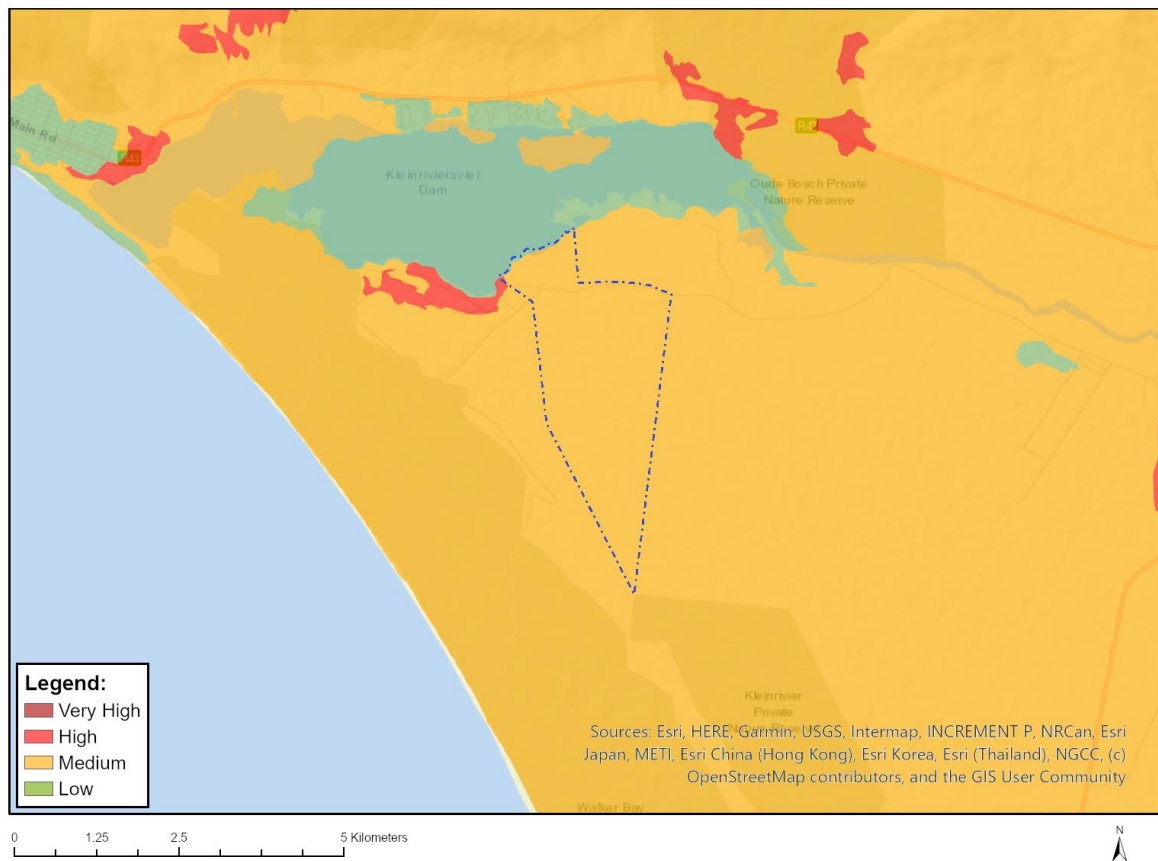


Very High sensitivity	High sensitivity	Medium sensitivity	Low sensitivity
X			

Sensitivity Features:

Sensitivity	Feature(s)
Low	Features with a Low paleontological sensitivity
Medium	Features with a Medium paleontological sensitivity
Very High	Features with a Very High paleontological sensitivity

MAP OF RELATIVE PLANT SPECIES THEME SENSITIVITY



Where only a sensitive plant unique number or sensitive animal unique number is provided in the screening report and an assessment is required, the environmental assessment practitioner (EAP) or specialist is required to email SANBI at eiadatarequests@sanbi.org.za listing all sensitive species with their unique identifiers for which information is required. The name has been withheld as the species may be prone to illegal harvesting and must be protected. SANBI will release the actual species name after the details of the EAP or specialist have been documented.

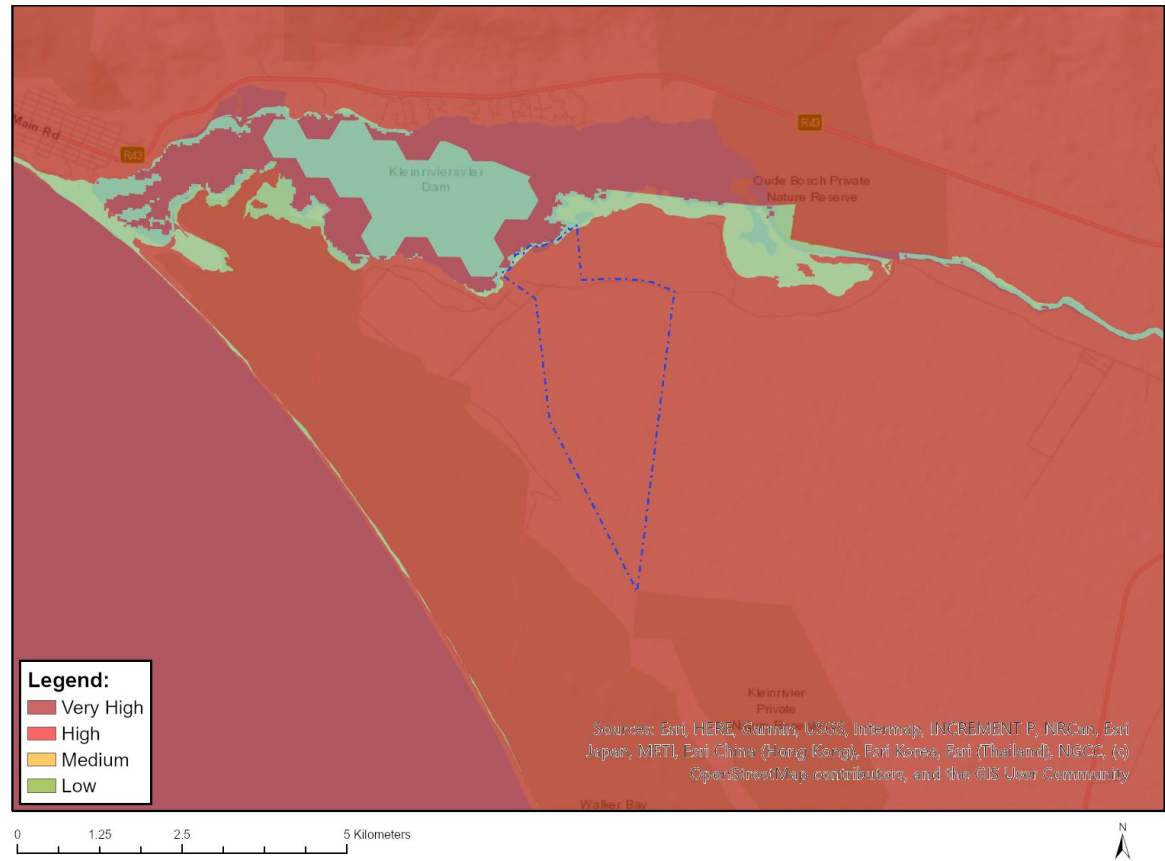
Very High sensitivity	High sensitivity	Medium sensitivity	Low sensitivity
	X		

Sensitivity Features:

Sensitivity	Feature(s)
High	Leucadendron coniferum
Low	Low Sensitivity
Medium	Ocotea bullata
Medium	Lampranthus stenus
Medium	Lampranthus tenuifolius
Medium	Delosperma guthriei
Medium	Erepsia dunensis
Medium	Jordaaniella anemoniflora
Medium	Liparia angustifolia
Medium	Aspalathus excelsa
Medium	Aspalathus globulosa
Medium	Colpoos speciosum
Medium	Leucadendron coniferum

Medium	Leucadendron laxum
Medium	Leucadendron linifolium
Medium	Leucadendron modestum
Medium	Leucospermum hypophyllocarpodendron subsp. hypophyllocarpodendron
Medium	Leucospermum patersonii
Medium	Leucospermum prostratum
Medium	Wahlenbergia polyantha
Medium	Selago diffusa
Medium	Sensitive species 137
Medium	Erica irregularis
Medium	Erica melanacme
Medium	Erica patersonii
Medium	Erica riparia
Medium	Erica radicans subsp. schlechteri
Medium	Erica perspicua subsp. latifolia
Medium	Tetragonia caesia
Medium	Sensitive species 1142
Medium	Isolepis venustula
Medium	Thamnochortus pellucidus
Medium	Elegia fenestrata
Medium	Elegia prominens
Medium	Restio sabulosus
Medium	Cynanchum zeyheri
Medium	Sensitive species 1192
Medium	Pterygodium vermiferum
Medium	Heliophila linearis var. reticulata
Medium	Gnidia spicata
Medium	Passerina paludosa
Medium	Poecilolepis maritima
Medium	Cotula eckloniana
Medium	Cotula myriophylloides
Medium	Arctotis angustifolia
Medium	Amellus asteroides subsp. mollis
Medium	Amellus capensis
Medium	Cullumia squarrosa
Medium	Diosma demissa
Medium	Diosma subulata
Medium	Agathosma abrupta
Medium	Zygophyllum fuscatum
Medium	Cliffortia ericifolia
Medium	Cliffortia longifolia
Medium	Cliffortia anthospermoides
Medium	Muraltia bolusii
Medium	Muraltia mitior
Medium	Sensitive species 1151
Medium	Sensitive species 1030
Medium	Orthochilus litoralis
Medium	Skiatophytum skiatophytoides
Medium	Lampranthus debilis
Medium	Xiphotheca reflexa
Medium	Aspalathus tylodes
Medium	Sensitive species 800
Medium	Sensitive species 599
Medium	Elegia verreauxii
Medium	Sensitive species 500
Medium	Sensitive species 53
Medium	Lachnaea grandiflora
Medium	Zostera capensis

MAP OF RELATIVE TERRESTRIAL BIODIVERSITY THEME SENSITIVITY



Very High sensitivity	High sensitivity	Medium sensitivity	Low sensitivity
X			

Sensitivity Features:

Sensitivity	Feature(s)
Low	Low Sensitivity
Very High	CBA: Terrestrial
Very High	CBA2: Terrestrial
Very High	Indigenous forest_Southern Coastal Forest
Very High	Kleinrivier Private Nature Reserve
Very High	SANParks PAES (2025)
Very High	CR_Agulhas Limestone Fynbos
Very High	EN_Overberg Dune Strandveld