



**LORNAY**  
ENVIRONMENTAL CONSULTING

# Photo Report

Portion 1 of the Farm 723, Stanford

**August 2025**

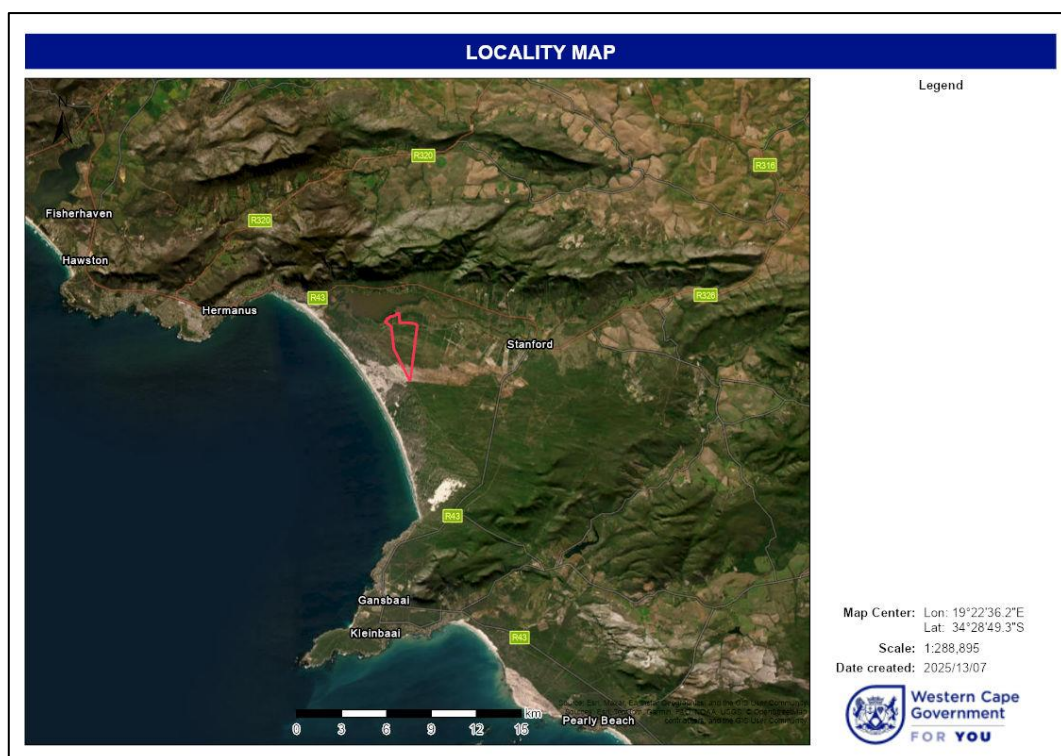
**Consultant:**

**Michelle Naylor** | Env. Consultant | M.Sc., Pr. Sci. Nat., EAPSA  
cell: 083 245 6556 | fax: 086 585 2461 | [michelle@lornay.co.za](mailto:michelle@lornay.co.za) | [www.lornay.co.za](http://www.lornay.co.za)  
Unit 5/1F, Hemel and Aarde Wine Village, Hermanus, 7200  
Lornay Environmental Consulting Pty Ltd | Reg 2015/445417/07

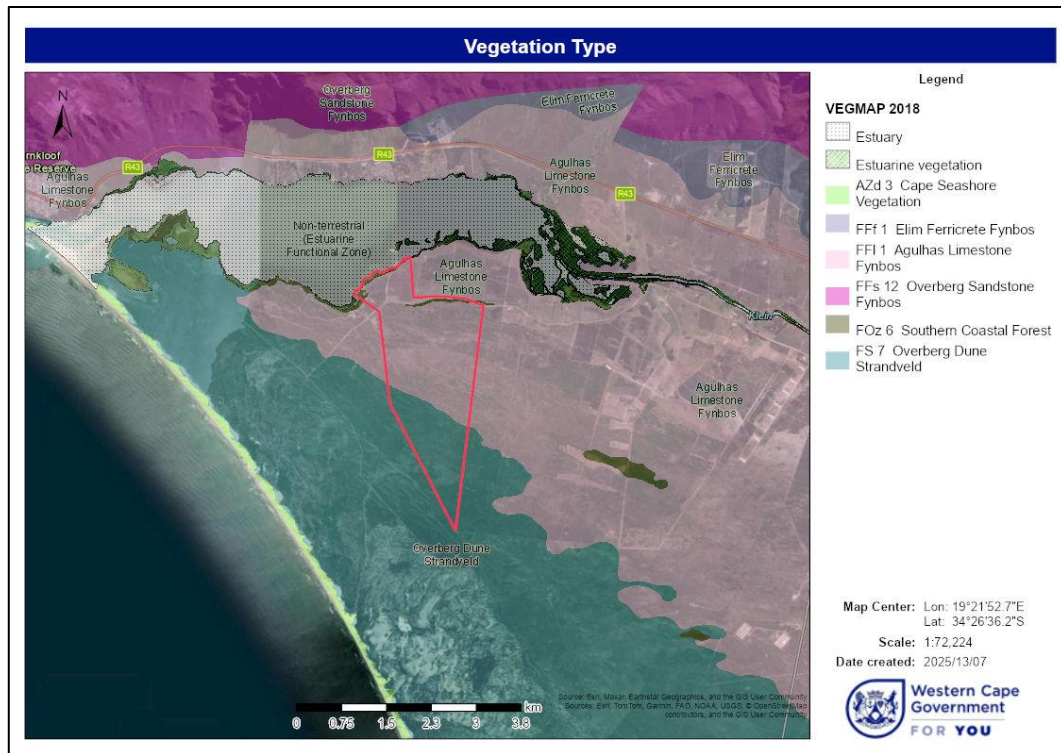
## INTRODUCTION

This photographic report has been compiled in support of the Section 24G Environmental Authorisation application for activities undertaken on Portion 1 of the Farm 723, Stanford, located within the jurisdiction of the Overstrand Local Municipality, Western Cape. The purpose of this report is to provide visual evidence of the current condition of the site, the completed infrastructure, and the surrounding environmental context, with reference to applicable ecological buffers, vegetation condition, and land use.

The site forms part of the greater Mosaic Farm tourism node and is situated within an area mapped as supporting Agulhas Limestone Fynbos. The photographic documentation captures key features including the five boathouses constructed on stilts, associated internal access roads, landscaped lawn areas, and surrounding natural vegetation. It also illustrates the spatial relationship between the development and sensitive environmental features such as the delineated wetland area and the Klein River Estuary. This report aims to demonstrate the extent of transformation, the sensitivity of the surrounding environment.



**Figure 1. Site location**



**Figure 2.** According to National Vegetation Map (2018) database, the vegetation on the site is Agulhas Limestone Fynbos.



**Photo 1.** Image showing the front of boathouse 1 and a slightly raised boardwalk. (Image taken in July 2025).





**Photo 2.** Image showing the side view of boathouse 1 constructed on stilts as well as the indigenous vegetation reestablishing underneath the boathouse. *(Image taken in July 2025).*



**Photo 3.** Image showing the indigenous vegetation screenig the boathouse 1. *(Image taken in July 2025).*





**Photo 4.** Intact indigenous vegetation around boathouse 1 (*Image taken in July 2025*).



**Photo 5.** Image showing intact indigenous vegetation next to boathouse 1. (*Image taken in July 2025*).





**Photo 6.** Image showing the front view of boathouse 2 along with the indigenous vegetation slightly screening the development. (*Image taken in July 2025*).





**Photo 7.** View of the boathouse 2 and a slightly raised boardwalk. *(Image taken in July 2025).*



**Photo 8.** View of the *(Image taken in July 2025).*





**Photo 10.** Overview of boathouse 3 (*Image taken in July 2025*).



**Photo 11.** View of boathouse 3 as well as indigenous vegetation present adjacent to the boathouse. (*Image taken in July 2025*).





**Photo 12.** Overview of boathouse 3 along with indigenous vegetation. *(Image taken in July 2025).*



**Photo 13.** Front view of boathouse 3 surrounded by indigenous vegetation. *(Image taken in July 2025).*





**Photo 14.** Image showing a slightly raised boardwalk providing access to boathouse 3. *(Image taken in July 2025).*



**Photo 15.** Image showing indigenous vegetation screening boathouse 3. *(Image taken in July 2025).*





**Photo 16.** Image showing side view of boathouse 4. *(Image taken in July 2025).*



**Photo 17.** View of indigenous vegetation screening boathouse 4. *(Image taken in July 2025).*





**Figure 18.** Image showing a slightly raised boardwalk which is providing access to boathouse 4. *(Image taken in July 2025).*



**Photo 19.** Image showing boathouse 5 which was built in 2024. *(Image taken in July 2025).*





**Photo 20.** Image showing boathouse 5, lawn area and indigenous vegetation. *(Image taken in July 2025).*



**Photo 21.** Image showing a 3.8 m<sup>2</sup> width dirt roads providing access to the 5 boathouses.





**Photo 22.** Image showing the dirt road and indigenous vegetation on either side of the road.



**Photo 23.** Image showing a parking area for one of the boathouses.





**Photo 24.** Image showing a dirt road established between indigenous vegetation and a fire hydrant.