

15 January 2026

TO WHOM IT MAY CONCERN

Addendum to the report entitled: Botanical and Terrestrial Biodiversity Assessment of the proposed development on Portion 4 of Middelburg 643, Stanford (Caledon), Overstrand Local Municipality, Western Cape Province.

Owing to the determination of the presence of an endangered katydid by the appointed Faunal Specialist in specific habitat on the property, the proposed preferred development layout has been changed. The former preferred layout was given as Alternative 2 and Figure 2 in the above report. Now the preferred alternative layout is Alternative 3, as depicted in **Figure 1**, below.

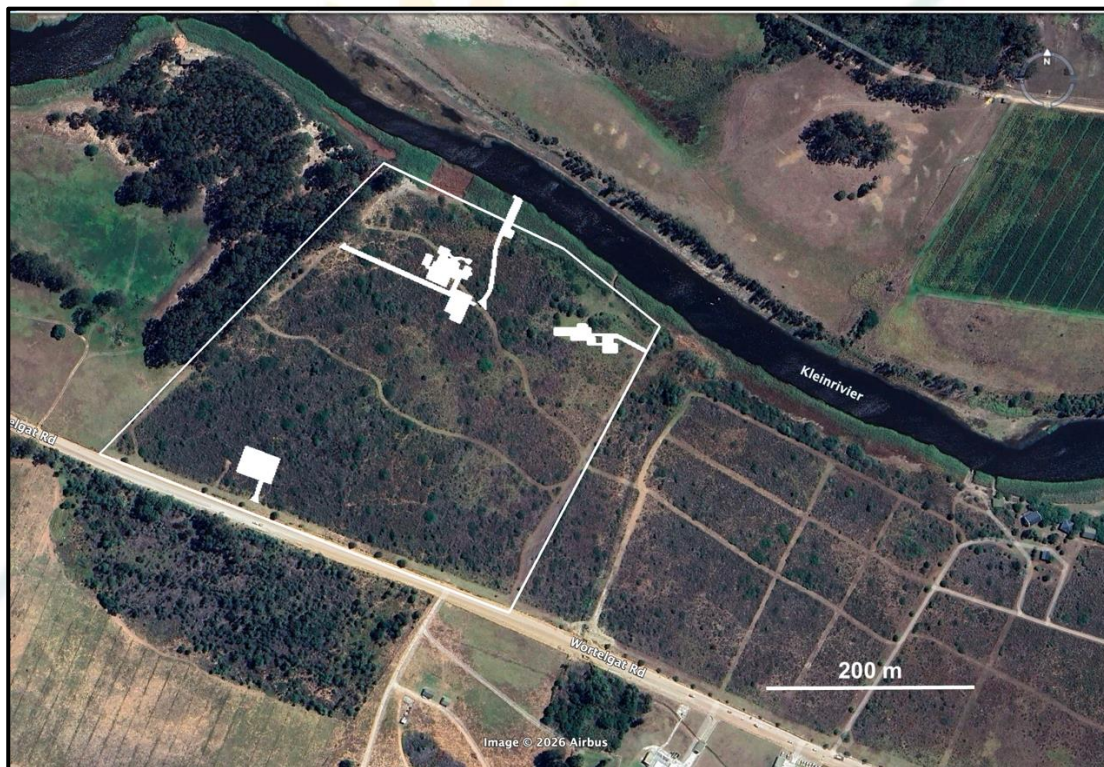


Figure 1. The Alternative 3 (preferred) development layout.

I have carefully considered the implications of the above change with respect to the botanical and general terrestrial biodiversity sensitivities, and have concluded that there will be no change in the level of impact (Low Negative) from that determined in the assessment as already reported (Table 5 in main report).

Yours sincerely,

A handwritten signature in black ink, appearing to read 'D McDonald', with a horizontal line underneath.

Dr David McDonald Pr. Sci. Nat.

Botanical Specialist

Bergwind Botanical Surveys & Tours CC