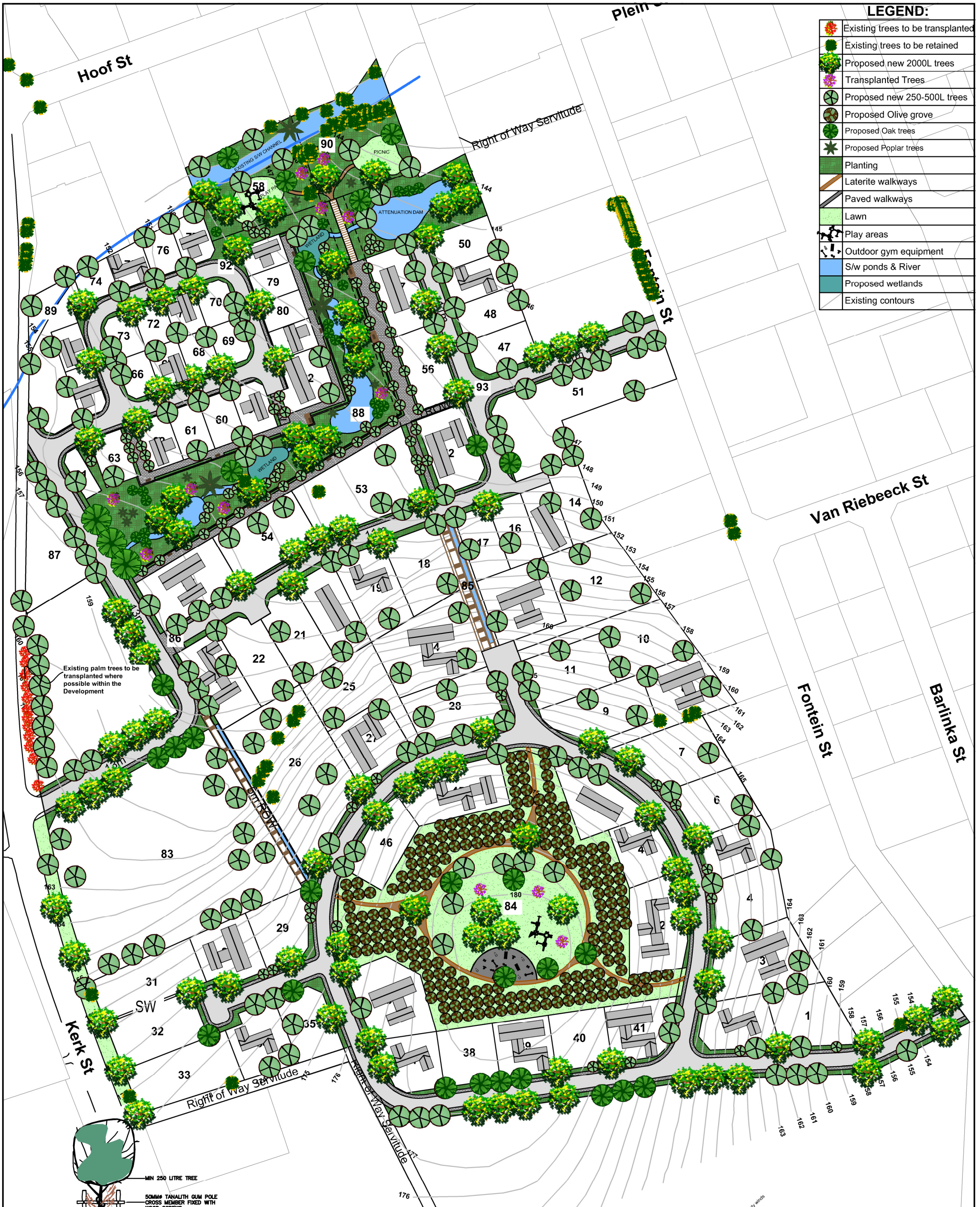
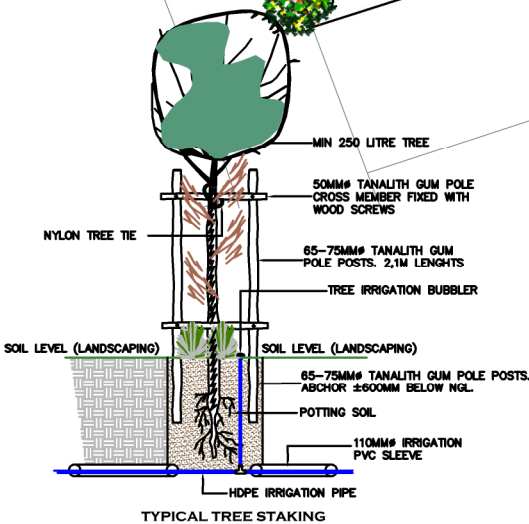


LEGEND:

	Existing trees to be transplanted
	Existing trees to be retained
	Proposed new 2000L trees
	Transplanted Trees
	Proposed new 250-500L trees
	Proposed Olive grove
	Proposed Oak trees
	Proposed Poplar trees
	Planting
	Laterite walkways
	Paved walkways
	Lawn
	Play areas
	Outdoor gym equipment
	S/w ponds & River
	Proposed wetlands
	Existing contours

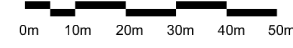
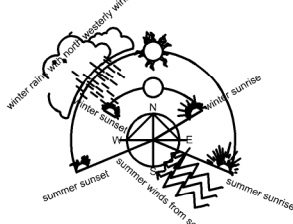


Existing palm trees to be transplanted where possible within the Development



Notes:

- The landscaping shall be implemented by the Developer and maintained for a minimum of 12 months whereafter the HOA will take over the maintenance and upkeep of the Development.
- Final tree positions to be determined once the underground services as-built are completed.
- Trees planted closer than 1.0m from any services to be safeguarded with root barriers.
- A planting plan in accordance with the Landscape Master plan must be done prior to the commencement of planting.
- Irrigation will be treated by means of an automated 100% coverage system and all trees to receive 2x bubblers.
- Verge trees along the R311 (Church street) will be minimum 500 litre size with a height of not less than 4.0m from NGL and a girth thickness of not less than 150mm diameter to ensure it aid in the screening of the development together with the existing verge trees.
- The balance of the Development trees will be a minimum of 250 litre size with a height of not less than 3.0m from NGL and a girth thickness of not less than 100mm diameter.
- Cluster trees will be a minimum of 2000litre trees with a height of not less than 5.0m from NGL and a girth thickness of not less than 250mm diameter.
- The allowance of pedestrian flow are by means of walkways along the road and linked to the open space areas within the Development.
- Proposed fencing along R311(Church street) should be a minimum of 80% transparent and the balance of Boundary line to be a brick wall of a maximum height of 1.8m from NGL.
- Planting and Lifestyle theme to be addressed in the plant and Treeplan.



Project: **SPRINGBOK HILL ESTATE**
 Drawing: - 10/12/2025
LANDSCAPE SITE DEVELOPMENT PLAN
 Location: Riebeeck Kasteel
 Scale: A3 - 1:1500
J.d.v. Landscape Studio
 Ignis Goosen, Email: ignis@jdv.co.za, Cell: 0826110042