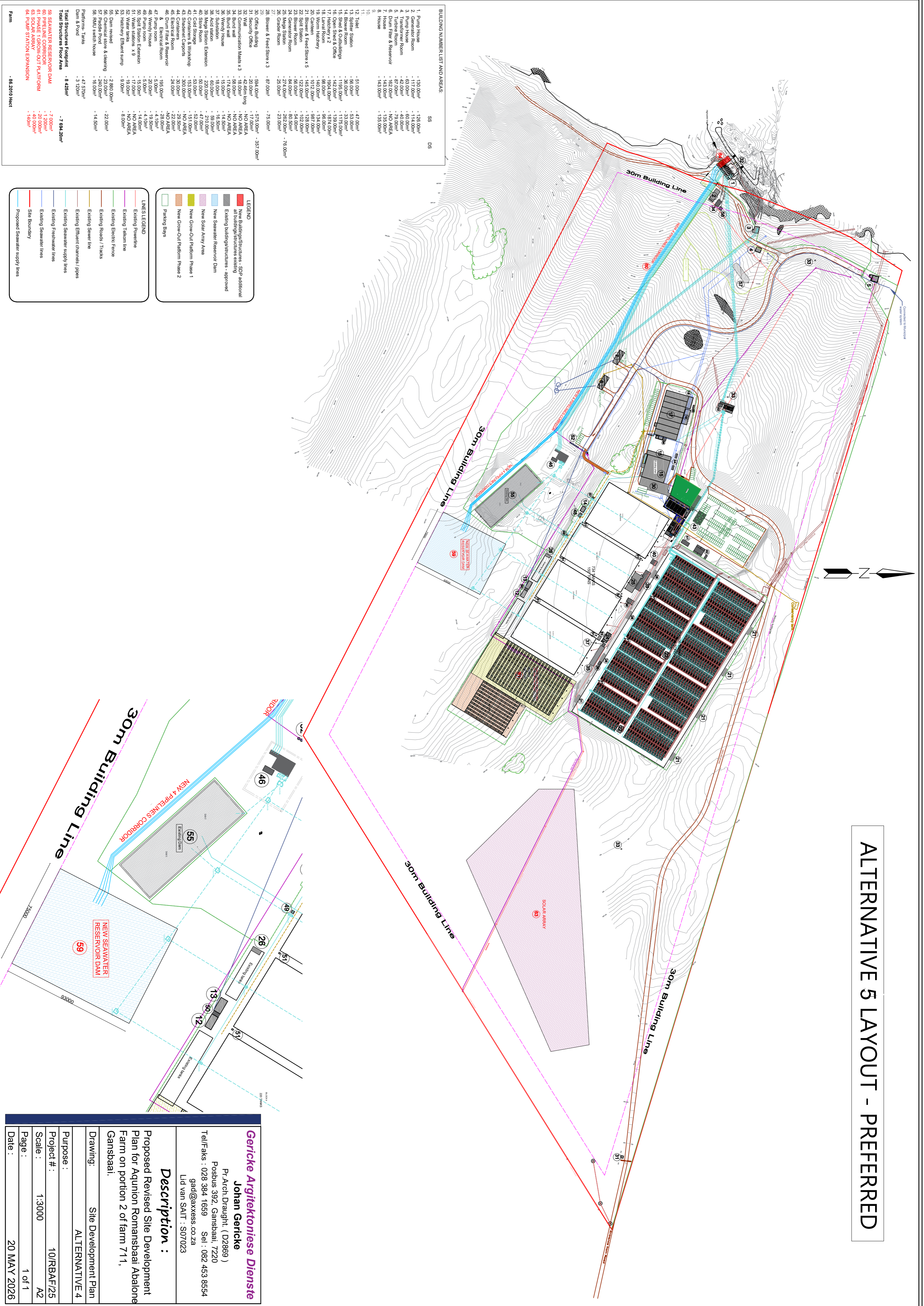


ALTERNATIVE 5 LAYOUT - PREFERRED



BUILDING NUMBER LIST AND AREAS:

Building Number	SS (m²)	D/S (m²)
1. Pump House	- 130.00m²	- 156.00m²
2. Generator Room	- 117.00m²	- 114.00m²
3. Pump House	- 63.00m²	- 60.00m²
4. Turbine Room	- 87.00m²	- 79.00m²
5. Turbine Room	- 87.00m²	- 79.00m²
6. Turbine Room	- 87.00m²	- 79.00m²
7. House	- 143.00m²	- 135.00m²
8. House	- 143.00m²	- 135.00m²
9. House	- 143.00m²	- 135.00m²
10.		
11. Toilet	- 51.00m²	- 47.00m²
12. Toilet	- 51.00m²	- 47.00m²
13. Toilet	- 51.00m²	- 47.00m²
14. Bower Room	- 36.00m²	- 33.00m²
15. Shed & Outbuildings	- 1195.00m²	- 1175.00m²
16. Open Shed & Office	- 442.00m²	- 139.00m²
17. Hatchery x 2	- 80.00m²	- 86.00m²
18. Hatchery x 2	- 80.00m²	- 86.00m²
19. Worm Hatchery	- 140.00m²	- 134.00m²
20. Canteen	- 1012.00m²	- 987.00m²
21. Bower & Feed Store x 5	- 45.00m²	- 36.00m²
22. Bower Room	- 14.00m²	- 14.00m²
23. Bower Room	- 84.00m²	- 80.50m²
24. Generator Room	- 84.00m²	- 80.50m²
25. Mega Station	- 274.00m²	- 262.00m²
26. Mega Station	- 274.00m²	- 262.00m²
27. Bower Room	- 23.00m²	- 23.00m²
28. Bower & Feed Store x 3	- 87.00m²	- 75.00m²
29. Office Building	- 594.00m²	- 575.00m²
30. Office Building	- 594.00m²	- 575.00m²
31. Office Building	- 594.00m²	- 575.00m²
32. Wall	- 42.46m long	- NO AREA
33. Communication Mast x 3	- 18.00m²	- NO AREA
34. Bund wall	- 98.00m²	- NO AREA
35. Bund wall	- 15.00m²	- NO AREA
36. Windy House	- 15.00m²	- 14.50m²
37. Substation	- 18.00m²	- 18.50m²
38. Acid station	- 60.00m²	- 59.00m²
39. Mega Station Extension	- 220.00m²	- 220.00m²
40. Mega Station	- 47.00m²	- 47.00m²
41. Cold Storage	- 53.00m²	- 52.00m²
42. Containers & Workshop	- 153.00m²	- 151.00m²
43. Shed	- 20.00m²	- NO AREA
44. Shed	- 20.00m²	- NO AREA
45. Electrical Room	- 24.00m²	- 22.00m²
46. Dum Filter & Reservoir	- 195.00m²	- NO AREA
47. Pump room	- 3.00m²	- 28.00m²
48. Pump room	- 3.00m²	- 19.50m²
49. Pump room	- 5.00m²	- 4.10m²
50. Split Station Extension	- 17.00m²	- 14.00m²
51. Wash stations x 9	- 17.00m²	- NO AREA
52. Wash stations x 9	- 17.00m²	- NO AREA
53. Hatchery Effluent sump	- 8.00m²	- 8.00m²
54.		
55. Dim reviled	- 2.880.00m²	- 22.00m²
56. Chemical store & cleaning	- 24.00m²	- 24.00m²
57. Chemical store & cleaning	- 24.00m²	- 24.00m²
58. RDU switch house	- 16.00m²	- 14.50m²
59. RDU switch house	- 16.00m²	- 14.50m²
Platform Tanks		
Dum & Pond	- 47.570m²	
Dum & Pond	- 9.125m²	
Total Structures Footprint	- 8.425m²	- 7.694.20m²
Total Structures Floor Area		
59. SEAWATER RESERVOIR DAM	- 7.000m²	- 1.200m²
60. PIPELINE CORRIDOR	- 20.000m²	- 20.000m²
61. PHASE 1 GROW-OUT PLATFORM	- 1400m²	- 1400m²
62. SOLAR ARRAY	- 1400m²	- 1400m²
63. SOLAR ARRAY	- 1400m²	- 1400m²
64. PHASE 2 GROW-OUT PLATFORM	- 1400m²	- 1400m²
65. TANK STATION EXPANSION	- 1400m²	- 1400m²
Farm	- 86.2010 Hect	

LEGEND

- New Buildings/Structures - SDP additional
- all buildings/structures existing
- Existing buildings/structures - approved
- New Sewer Reservoir Dam
- New Solar Array Area
- New Grow-Out Platform Phase 1
- New Grow-Out Platform Phase 2
- Parking Bays

LINE LEGEND

- Existing Powerline
- Existing Telecom line
- Existing Electric Fence
- Existing Road/Tracks
- Existing Sewer/Trunks
- Existing Sewer line
- Existing Effluent channels/ pipes
- Existing Freshwater supply lines
- Existing Freshwater lines
- Existing Sewerwater lines
- Site Boundary
- Proposed Sewerwater supply lines

Gericke Argitektoniese Dienste
Johan Gericke
 Pr. Arch Draught (D2869)
 Posbus 392, Gansbaai, 7220
 Tel/Faks : 028 384 1659 Sel: 082 453 8554
 gad@axxess.co.za
 Ltd Van SAIT : S07023

Description :
 Proposed Revised Site Development Plan for Aquilion Romansbaai Abalone Farm on portion 2 of farm 711, Gansbaai.

Drawing: Site Development Plan
 ALTERNATIVE 4

Purpose : 10/RBAF/25
 Project # : A2
 Scale : 1:3000
 Page : 1 of 1
 Date : 20 MAY 2026